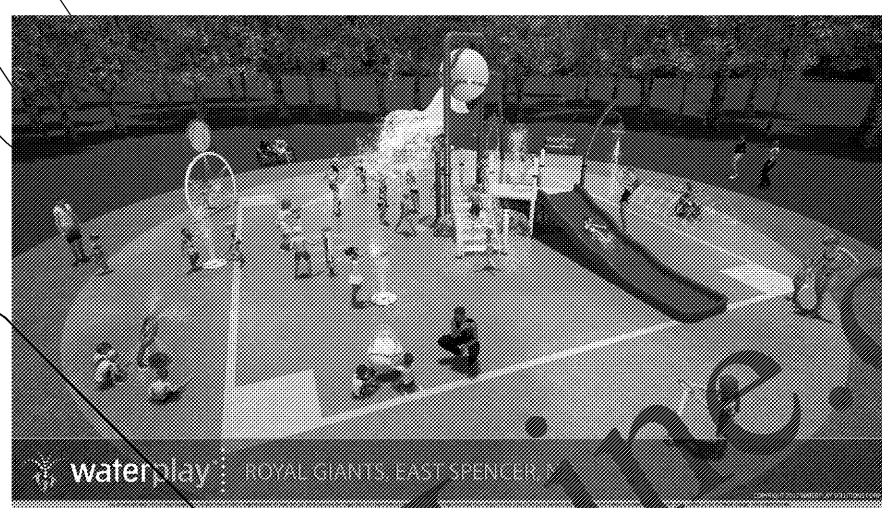


ITEM	SKU	COMPONENT NAME	QTY
1	EST-01202	CUSTOM SL2002	1
2	0010-2321	O-RIBINAL	1
3	0010-0426	CARRONADE	2
4	0010-0485	FUN-BRELLA	1
5	0010-1540	MISTY MOUNTAIN	1
6	0010-0491	MAGNIF-EYE	1
7	0010-0576	SOLIS - 24"	1
8	002-347	65' LILY PAD (SEYSER)	2
9	002-034	65' SPRAY TUNNEL & (STEADY STREAM)	1
10	002-347	65' LILY PAD (MISTY MOUNTAIN)	2
11	0010-1854	ACTIVATOR, POWER POST	1
12	DRA-00007	DRAIN, 6" OUTLET (GREY)	6

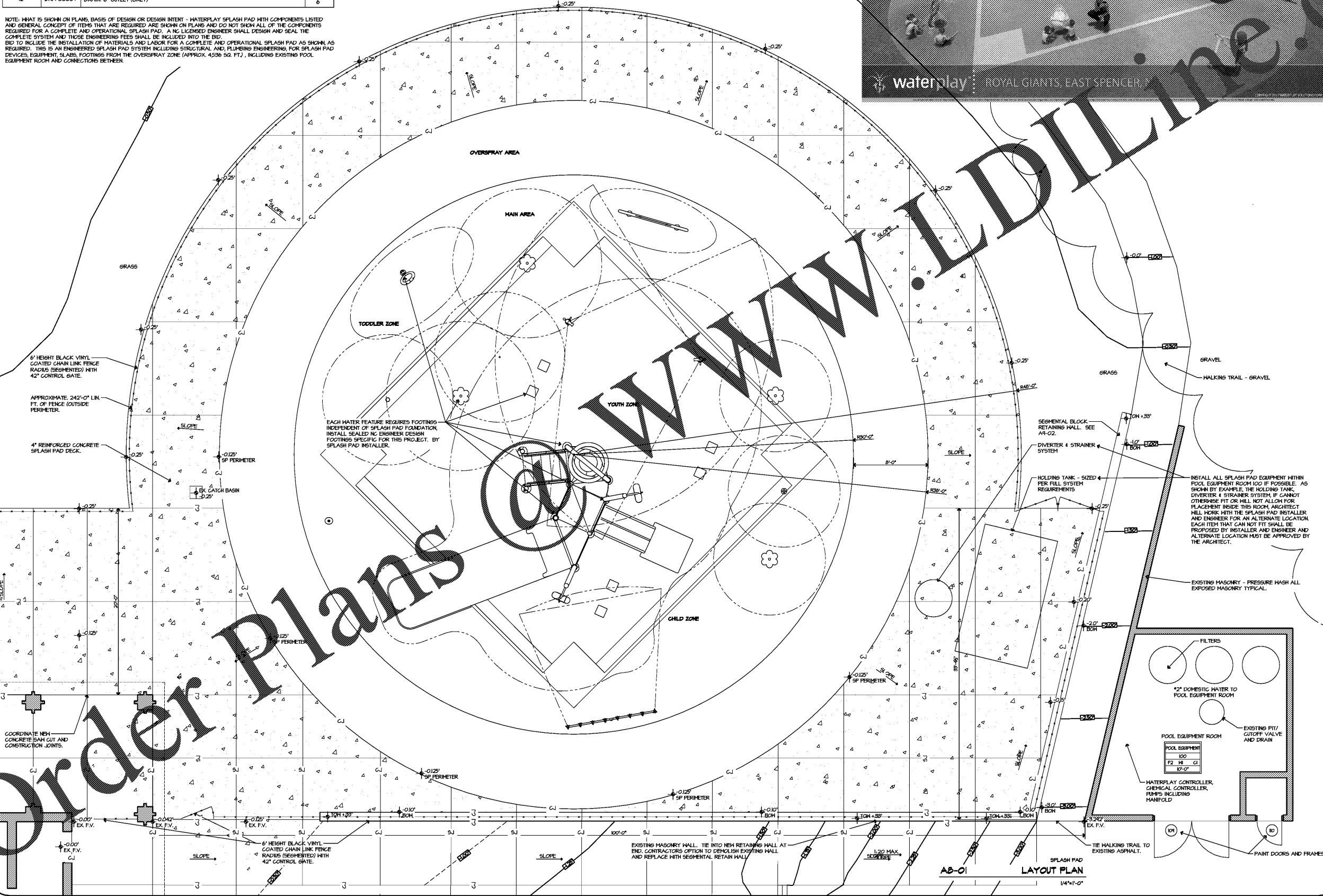
- NOTES:
1. MAIN AQUATIC PLAY PAD AREA: 2827 SQ. FT. TOTAL AREA INCLUDING OVERSPRAY ZONE: 4536 SQ. FT.
 2. TO AVOID POTENTIAL DAMAGE TO SURROUNDING SOFTSCAPE AND TO KEEP PEDESTRIAN TRAFFIC FROM GETTING WET, WATERPLAY RECOMMENDS A MINIMUM OVERSPRAY OF 2.44 METRES (8'). FOR AREAS WITH HIGH WINDS, A LARGER OVERSPRAY ZONE MAY BE REQUIRED.
 3. GRADE SURROUNDING OUTSIDE PERIMETER LANDSCAPE TO PROVIDE ADDITIONAL DRAINAGE AWAY FROM OVERSPRAY PAD.
 4. SLOPES (INCLUDING MAIN AND OVERSPRAY AREAS) TO PROVIDE POSITIVE DRAINAGE TO DRAINS. IF CODE REQUIRES THAT THERE BE A ZONE SLOPING AWAY FROM THE MAIN AREA, WATERPLAY RECOMMENDS AN ADDITIONAL DRY ZONE TO MEET THAT REQUIREMENT.
 5. SLAB GRADES SUBJECT TO ENGINEER APPROVAL (NOTE ADA MAX GROSS SLOPE GRADE IS 2%).
- NOTE: SLIDE ACTIVITY CENTRE REQUIRES - A COMPLETELY FLAT STRUCTURALLY ENGINEERED SLAB. - REFER TO SLIDE INSTALLATION GUIDE FOR ADDITIONAL DETAILS.

NOTE: WHAT IS SHOWN ON PLANS, BASIS OF DESIGN OR DESIGN INTENT - WATERPLAY SPLASH PAD WITH COMPONENTS LISTED AND GENERAL CONCEPT OF ITEMS THAT ARE REQUIRED ARE SHOWN ON PLANS AND DO NOT SHOW ALL OF THE COMPONENTS REQUIRED FOR A COMPLETE AND OPERATIONAL SPLASH PAD. A NC LICENSED ENGINEER SHALL DESIGN AND SEAL THE COMPLETE SYSTEM AND THOSE ENGINEERING FEES SHALL BE INCLUDED INTO THE BID. WATERPLAY RECOMMENDS THAT THE BID TO INCLUDE THE INSTALLATION OF MATERIALS AND LABOR FOR A COMPLETE AND OPERATIONAL SPLASH PAD AS SHOWN AS REQUIRED. THIS IS AN ENGINEERED SPLASH PAD SYSTEM INCLUDING STRUCTURAL AND PLUMBING ENGINEERING, FOR SPLASH PAD DEVICES, EQUIPMENT, SLABS, FOOTINGS FROM THE OVERSPRAY ZONE (APPROX. 4536 SQ. FT.), INCLUDING EXISTING POOL EQUIPMENT ROOM AND CONNECTIONS BETWEEN.



**RAMSAY
BURGIN
SMITH
ARCHITECTS**
225 NORTH MAIN STREET - SUITE 100
SALISBURY, NORTH CAROLINA 28033
Phone: (704) 655-2121 Fax: (704) 655-2122
Email: rbs@ramsburchsmith.com

PUBLICATION OR REVISION OF THESE DRAWINGS OR ANY DETAIL THEREOF MUST BE WITH THE WRITTEN CONSENT OF THE ARCHITECT



SPLASH PAD LAYOUT
**SPLASH
PAD
SHEET**
LAYOUT PLAN
ITEM SCHEDULE
NOTES

INSTALL ALL SPLASH PAD EQUIPMENT WITHIN POOL EQUIPMENT ROOM 100 IF POSSIBLE. AS SHOWN BY EXAMPLE, THE HOLDING TANK, DIVERTER & STRAINER SYSTEM IF CANNOT OTHERWISE FIT OR WILL NOT ALLOW FOR PLACEMENT INSIDE THIS ROOM, ARCHITECT WILL WORK WITH THE SPLASH PAD INSTALLER AND ENGINEER FOR AN ALTERNATE LOCATION. EACH ITEM THAT CAN NOT FIT SHALL BE PROPOSED BY INSTALLER AND ENGINEER AND ALTERNATE LOCATION MUST BE APPROVED BY THE ARCHITECT.

EXISTING MASONRY - PRESSURE WASH ALL EXPOSED MASONRY TYPICAL.

**ROYAL GIANTS
PARK - 2017
RENEWAL PROJECT**
200 ROBINSON ROAD
EAST SPENCER, NC 28039

