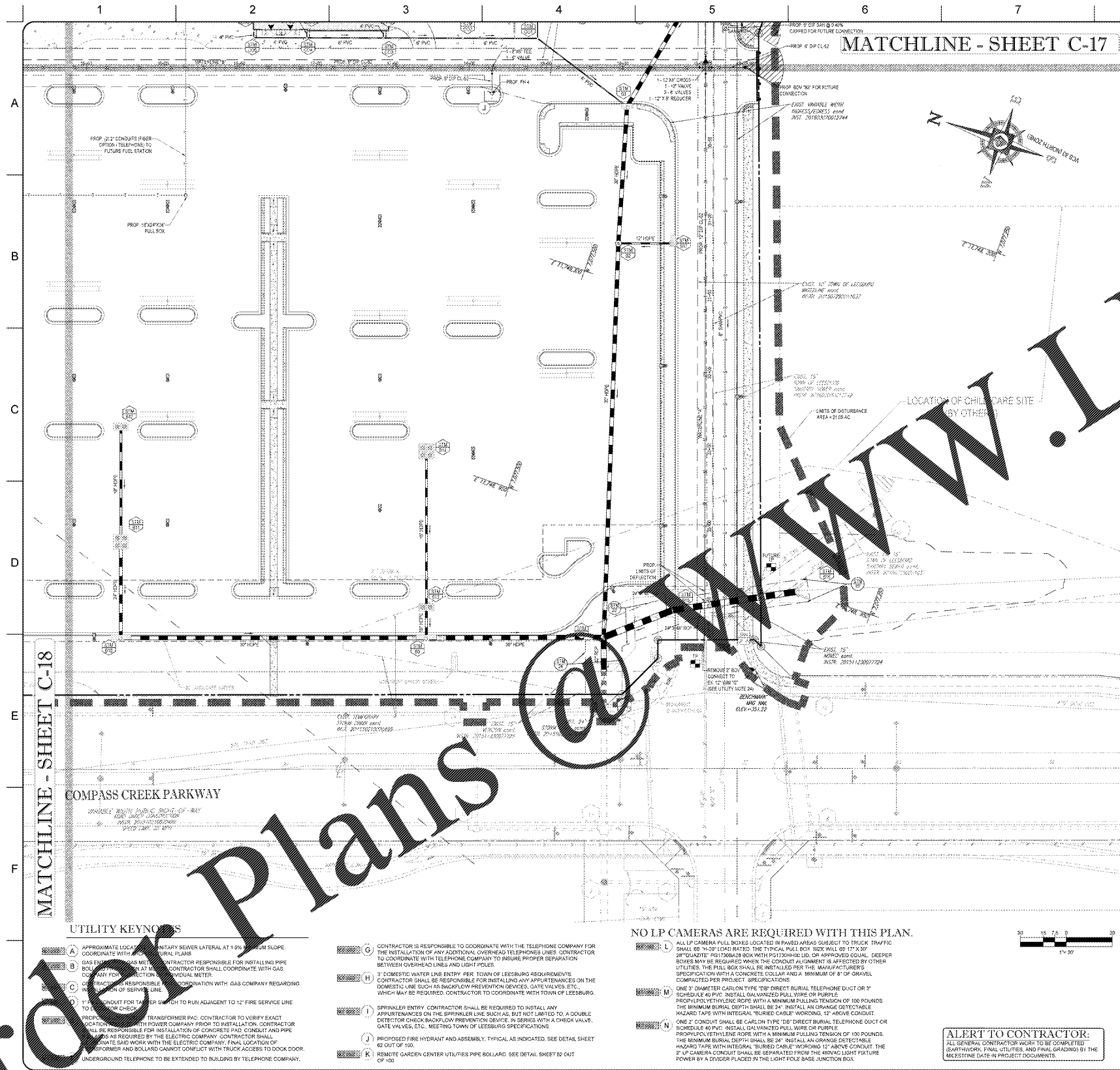


Order Plans

WWW.LDLINE.COM



MATCHLINE - SHEET C-17

MATCHLINE - SHEET C-18

UTILITY KEYNOTS

- A APPROXIMATE LOCATION OF SANITARY SEWER LATERAL AT 1.0% MINIMUM SLOPE COORDINATE WITH ORIGINAL PLANS
- B GAS SERVICE AS MET BY CONTRACTOR RESPONSIBLE FOR INSTALLING PIPE BOLLARD SHALL BE INSTALLED AT THE LOCATION OF THE METER
- C CONTRACTOR RESPONSIBLE FOR INSTALLATION OF CONDUIT AND PIPE
- D 1/2" CONDUIT FOR TRANSFORMER SWITCH TO RUN ADJACENT TO 12" FIRE SERVICE LINE TO TRANSFORMER PAD
- E CONTRACTOR TO VERIFY EXACT LOCATION WITH POWER COMPANY PRIOR TO INSTALLATION. CONTRACTOR SHALL BE RESPONSIBLE FOR INSTALLATION OF CONCRETE PAD CONDUIT AND PIPE
- F AS REQUIRED BY THE ELECTRIC COMPANY, CONTRACTOR SHALL PROVIDE WORK WITH THE ELECTRIC COMPANY. FINAL LOCATION OF TRANSFORMER AND BOLLARD CANNOT CONFLICT WITH TRUCK ACCESS TO DOOR DOOR UNDERGROUND TELEPHONE TO BE EXTENDED TO BUILDING BY TELEPHONE COMPANY.

- G CONTRACTOR IS RESPONSIBLE TO COORDINATE WITH THE TELEPHONE COMPANY FOR THE INSTALLATION OF ANY ADDITIONAL OVERHEAD TELEPHONE LINES. CONTRACTOR TO COORDINATE WITH TELEPHONE COMPANY TO INSURE PROPER SEPARATION BETWEEN OVERHEAD LINES AND LIGHT POLES
- H 3" DOMESTIC WATER LINE ENTRY PER TOWN OF LEESBURG REQUIREMENTS CONTRACTOR SHALL BE RESPONSIBLE FOR INSTALLING ANY APURTENANCES ON THE DOMESTIC LINE SUCH AS BACKFLOW PREVENTION DEVICES, GATE VALVES, ETC. WHICH MAY BE REQUIRED. CONTRACTOR TO COORDINATE WITH TOWN OF LEESBURG.
- I SPRINKLER ENTRY CONTRACTOR SHALL BE REQUIRED TO INSTALL ANY APURTENANCES ON THE SPRINKLER LINE SUCH AS, BUT NOT LIMITED TO, A DOUBLE DETECTOR CHECK BACKFLOW PREVENTION DEVICE IN SERIES WITH A CHECK VALVE, GATE VALVES, ETC. MEETING TOWN OF LEESBURG SPECIFICATIONS
- J PROPOSED FIRE HYDRANT AND ASSEMBLY, TYPICAL AS INDICATED. SEE DETAIL SHEET 60 OUT OF 100.
- K RESETTLE GARDEN CENTER UTILITIES PIPE BOLLARD. SEE DETAIL SHEET 60 OUT OF 100.

NO LP CAMERAS ARE REQUIRED WITH THIS PLAN.

- L ALL LP CAMERA PULL BOXES LOCATED IN PAVED AREAS SUBJECT TO TRUCK TRAFFIC SHALL BE 7/8" LOAD RATED. THE TYPICAL PULL BOX SIZE SHALL BE 17" X 30" 2" GALVANIZED STEEL BOX WITH POLYETHYLENE OR APPROVED EQUAL. DEEPER BOXES MAY BE REQUIRED WHEN THE CONDUIT ALIGNMENT IS AFFECTED BY OTHER UTILITIES. THE PULL BOX SHALL BE INSTALLED PER THE MANUFACTURER'S SPECIFICATION WITH A CONCRETE COLLAR AND A MINIMUM OF 8" OF GRAVEL COMPACTED PER PROJECT SPECIFICATIONS
- M ONE 3" DIAMETER CARBON FIBRE TOP DIRECT BURIAL TELEPHONE CONDUIT OR 2" SCHEDULE 40 PVC. INSTALL GALVANIZED FULLY BOND OR PURPLE PROPOLYETHYLENE ROPE WITH A MINIMUM PULLING TENSION OF 500 POUNDS. THE MINIMUM BURIAL DEPTH SHALL BE 24" INSTALLED AS DRINKING DETECTABLE HAZARD TAPE WITH INTEGRAL "BURIED CABLE" WORDING 12" ABOVE CONDUIT. ONE 3" CONDUIT SHALL BE CARBON FIBRE TOP DIRECT BURIAL TELEPHONE CONDUIT OR SCHEDULE 40 PVC. INSTALL GALVANIZED FULLY BOND OR PURPLE PROPOLYETHYLENE ROPE WITH A MINIMUM PULLING TENSION OF 100 POUNDS. THE MINIMUM BURIAL DEPTH SHALL BE 24" INSTALLED AS DRINKING DETECTABLE HAZARD TAPE WITH INTEGRAL "BURIED CABLE" WORDING 12" ABOVE CONDUIT. THE 3" LP CAMERA CONDUIT SHALL BE SEPARATED FROM THE 48VAC LIGHT FIXTURE POWER BY A DIVIDER PLACED IN THE LIGHT POLE BASE JUNCTION BOX.
- N

ALERT TO CONTRACTOR: ALL GENERAL CONTRACTOR WORK TO BE COMPLETED (EARTHWORK, FINAL UTILITIES, AND FINAL GRADING) BY THE MILESTONE DATE IN PROJECT DOCUMENTS.

UTILITY LEGEND

EXISTING NOTE	TYPICAL NOTE TEXT	PROPOSED NOTE
(Symbol)	SANITARY LATERAL	(Symbol)
(Symbol)	STORM LABEL	(Symbol)
(Symbol)	SANITARY SEWER LATERAL	(Symbol)
(Symbol)	UNDERGROUND WATER LINE	(Symbol)
(Symbol)	UNDERGROUND ELECTRIC LINE	(Symbol)
(Symbol)	UNDERGROUND GAS LINE	(Symbol)
(Symbol)	OVERHEAD WIRE	(Symbol)
(Symbol)	UNDERGROUND TELEPHONE LINE	(Symbol)
(Symbol)	UNDERGROUND CABLE LINE	(Symbol)
(Symbol)	STORM SEWER	(Symbol)
(Symbol)	SANITARY MANHOLE	(Symbol)
(Symbol)	WATER METER	(Symbol)
(Symbol)	WATER VALVE	(Symbol)
(Symbol)	GAS VALVE	(Symbol)
(Symbol)	GAS METER	(Symbol)
(Symbol)	TYPICAL END SECTION	(Symbol)
(Symbol)	RETIRED OR ENDED	(Symbol)
(Symbol)	YARD INLET	(Symbol)
(Symbol)	CURB	(Symbol)
(Symbol)	CLEAN OUT	(Symbol)
(Symbol)	ELECTRIC MANHOLE	(Symbol)
(Symbol)	TELEPHONE MANHOLE	(Symbol)
(Symbol)	ELECTRIC BOX	(Symbol)
(Symbol)	ELECTRIC PEDESTAL	(Symbol)
(Symbol)	MONITORING WELL	(Symbol)
(Symbol)	TEST PIT	(Symbol)

UTILITY NOTES

1. ALL FILL MATERIAL IS TO BE IN PLACE, AND COMPACTED BEFORE INSTALLATION OF PROPOSED UTILITIES.
2. CONTRACTOR SHALL NOTIFY THE UTILITY AUTHORITIES INSPECTORS 72 HOURS BEFORE CONNECTING TO ANY EXISTING WATER LINES SHALL BE AS FOLLOWS:
  - A. ALL DUCTILE IRON PIPE SHALL BE PROVIDED WITH POLYETHYLENE CASING, SLAM-STOP COUPLER TUBE, "Y" OR "X" WILL BE USED FOR THE 2" WATER SERVICE LINE BETWEEN THE WATER MAIN AND TOWN WATER METER. SEE DETAIL SHEET C-17.
3. TRENCH WIDTHS TO BE BASED ON PIPE DIAMETERS PER TOWN DETAILS SD-5 AND WD-12 TO ALLOW SUFFICIENT WORKSPACE FOR PROPER BEDDING AND COMPACTED. SEE SHEET D-1.
4. ALL WATER JOINTS ARE TO BE MECHANICAL JOINTS WITH THRUST BLOCKS AS SHOWN ON THE TOWN DETAILS.
5. IF FEASIBLE, ALL UTILITIES SHOULD BE KEPT TEN (10') CLEAR (PARALLEL OR WHEN CROSSING) IF VERTICAL CLEARANCE (OUTSIDE EDGE OF PIPE TO OUTSIDE EDGE OF PIPE).
6. CONTRACTOR SHALL MAINTAIN A MINIMUM OF 4'-0" COVER ON ALL WATERLINES UNLESS OTHERWISE SPECIFIED.
7. IF THE EXISTING UTILITIES COMPACT BETWEEN WATER LINES, SANITARY LINES, STORM LINES AND GAS LINES EXISTING AND PROPOSED, THE SANITARY LINE SHALL BE DUCTILE IRON PIPE WITH MECHANICAL JOINTS AT LEAST 10 FEET ON BOTH SIDES OF CROSSING. THE WATER LINE SHALL HAVE MECHANICAL JOINTS WITH APPROPRIATE THRUST BLOCKS REQUIRED TO PROVIDE A MINIMUM OF 10' CLEARANCE. MEETING REQUIREMENTS OF ANSI A21.10 OR ANSI 21.11 (AWWA C-151) CLASS 50.
8. LINES UNDERGROUND SHALL BE INSTALLED, INSPECTED AND APPROVED BEFORE BACKFILLING.
9. TOPS OF EXISTING MANHOLES SHALL BE ADJUSTED AS NECESSARY TO BE FLUSH WITH PROPOSED PAVEMENT ELEVATIONS.
10. ALL CONCRETE FOR ENCLOSURES SHALL HAVE A MINIMUM 28 DAY COMPRESSION STRENGTH AT 3000 P.S.I.
11. EXISTING UTILITIES SHALL BE VERIFIED IN FIELD PRIOR TO INSTALLATION OF ANY NEW LINES.
12. REFER TO INTERIOR PLUMBING DRAWINGS FOR THE IN OF ALL UTILITIES.
13. CONTRACTOR IS RESPONSIBLE FOR COMPLYING TO THE SPECIFICATIONS OF THE LOCAL AUTHORITIES (TOWN OF LEESBURG) WITH REGARD TO MATERIALS AND INSTALLATION OF THE WATER AND SEWER LINES.
14. THE CONTRACTOR IS SPECIFICALLY CAUTIONED THAT THE LOCATION AND/OR ELEVATION OF EXISTING UTILITIES AS SHOWN ON THESE PLANS IS BASED ON RECORDS OF THE VARIOUS UTILITY COMPANIES AND WHERE POSSIBLE, MEASUREMENTS TAKEN IN THE FIELD. THE INFORMATION IS NOT TO BE RELIED UPON AS BEING EXACT OR COMPLETE. THE CONTRACTOR MUST CALL THE APPROPRIATE UTILITY COMPANIES AT LEAST 72 HOURS BEFORE ANY EXCAVATION TO REQUEST EXACT FIELD LOCATION OF ALL EXISTING UTILITIES. IT IS THE CONTRACTOR'S RESPONSIBILITY TO RELOCATE ALL EXISTING UTILITIES WHICH CONFLICT WITH THE PROPOSED IMPROVEMENTS SHOWN ON THE PLANS.
15. CONTRACTOR IS RESPONSIBLE FOR ALL NECESSARY INSPECTIONS AND/OR CERTIFICATIONS REQUIRED BY COSCS AND/OR UTILITY SERVICE COMPANIES. THIS AND THE FINAL CONNECTIONS OF THE SERVICE SHALL BE COMPLETED 30 DAYS PRIOR TO STORE POSSESSION.
16. CONTRACTOR SHALL COORDINATE WITH ALL UTILITY COMPANIES FOR INSTALLATION REQUIREMENTS AND SPECIFICATIONS.
17. UTILITIES SHOWN AS EXISTING IN PUBLIC ROW (WATER, SEWER, STORM) AND THE ROADWAYS THEMSELVES ARE NOT CONSTRUCTED AT TIME OF WALMART'S CONSTRUCTION. THIS WORK IS PROPOSED TO BE BUILT AS SHOWN (BY OTHERS) BUT MAY NOT ALL BE COMPLETED AT TIME OF WALMART'S CONSTRUCTION.
18. REFER TO BUILDING PLANS FOR SITE LIGHTING ELECTRICAL PLAN.
19. ALL CONNECTIONS TO EXISTING SANITARY SEWER MANHOLES MUST BE CORE DRILLED WITH A APPROVED FLEXIBLE SLEEVE.
20. FOR GRAVITY SEWER APPLICATIONS, DUCTILE IRON PIPE AND FITTINGS (EPOXY COATED CLASS 50) ARE REQUIRED FOR PIPE DEPTHS LESS THAN 4'-0" THAT ARE SUBJECT TO VEHICULAR LOADINGS.
21. ALL PIPE JOINTS AND CONNECTIONS MUST BE INSTALLED IN ACCORDANCE WITH THE MANUFACTURER, ASTM AND VDOT PROVISIONS, SPECIFICATIONS AND IT IS THE CONTRACTOR'S RESPONSIBILITY TO BE SURE THAT ALL PIPE IS LOW RESISTANT.
22. ALL THERMOPLASTIC, HDPE AND NON-CONCRETE PIPE JOINTS AND CONNECTIONS SHALL BE DESIGNED AND INSTALLED IN ACCORDANCE WITH THE MANUFACTURER'S SPECIFICATIONS. ALL JOINTS SHALL BE INSTALLED IN ACCORDANCE WITH THE STRUCTURES PREPARED, CAST-IN-PLACE, CONCRETE BLOCK, BRICK, ETC. ALL THESE MUST BE INSTALLED IN ACCORDANCE WITH ASTM AND VDOT REQUIREMENTS AND THE TOWN OF LEESBURG SPECIFICATIONS TO ELIMINATE THE POTENTIAL FOR SHEAR FAILURE, TO BE SOIL TIGHT, AND LEAK RESISTANT (FLEXIBLE CONNECTIONS).
23. FOR CONNECTIONS THROUGH UTILITIES, USE A COMPOSITE OR CONCRETE WATER BARRIERS. STRUCTURES SHALL BE BUILT IN ACCORDANCE WITH SP-4 (2014) SEE PAGES 18 AND 98 FOR STORM CONNECTIONS AND PAGE 83 FOR SANITARY SEWER CONNECTIONS. SEE PAGE 83 FOR WATER MAIN CONNECTIONS.
24. ALL INHIBITORS FIRE LINES, THRU-OUT VALVES, BENDS, TEES, CROSSERS, WYER, PLUGS AND CAPS SHALL HAVE POURED-IN-PLACE CONCRETE ANCHOR THRU-OUT BULKS AGAINST UNDIURABLE EARTH.
25. STRUCTURES A19 AND B19 PROPOSED AS BIPHONIC MANHOLES WITH SLOTTED GRATES.
26. FIELD RECORDS SHOWING TELEPHONE AND POWER CONDUIT TO FUTURE PULL STATION SHALL BE "PICK" AND INSTALLED PER THE MANUFACTURER'S SPECIFICATIONS WITH A CONCRETE COLLAR AND A MINIMUM OF 8" OF GRAVEL BEDDING COMPACTED PER THE PROJECT SPECIFICATIONS.

REVISIONS

NO.	DATE	BY	DESCRIPTION
1			REVISED PER COUNTY AND TOWN COMMENTS
2			REVISED PER COUNTY AND TOWN COMMENTS
3			REVISED PER COUNTY AND TOWN COMMENTS
4			REVISED PER COUNTY AND TOWN COMMENTS

BOHLER ENGINEERING

22838 DAVIS DRIVE, SUITE 250  
STERLING, VIRGINIA 20154

Phone: (703) 706-5500  
Fax: (703) 706-8501  
VA@BohlerEng.com

UTILITY PLAN

WALMART SUPERCENTER #1904-005 - SPAM #1  
CATOCTIN ELECTION DISTRICT,  
LEESBURG, LOUDOUN COUNTY, VA

WAL-MART STORES, INC.  
BENTONVILLE, AR

DRAWN	GRP
CHECKED	MJB
DATE	12/22/16
SCALE	1" = 30'
JOB NO.	5148000
SHEET	C-19
SHEET 22 OF 103	