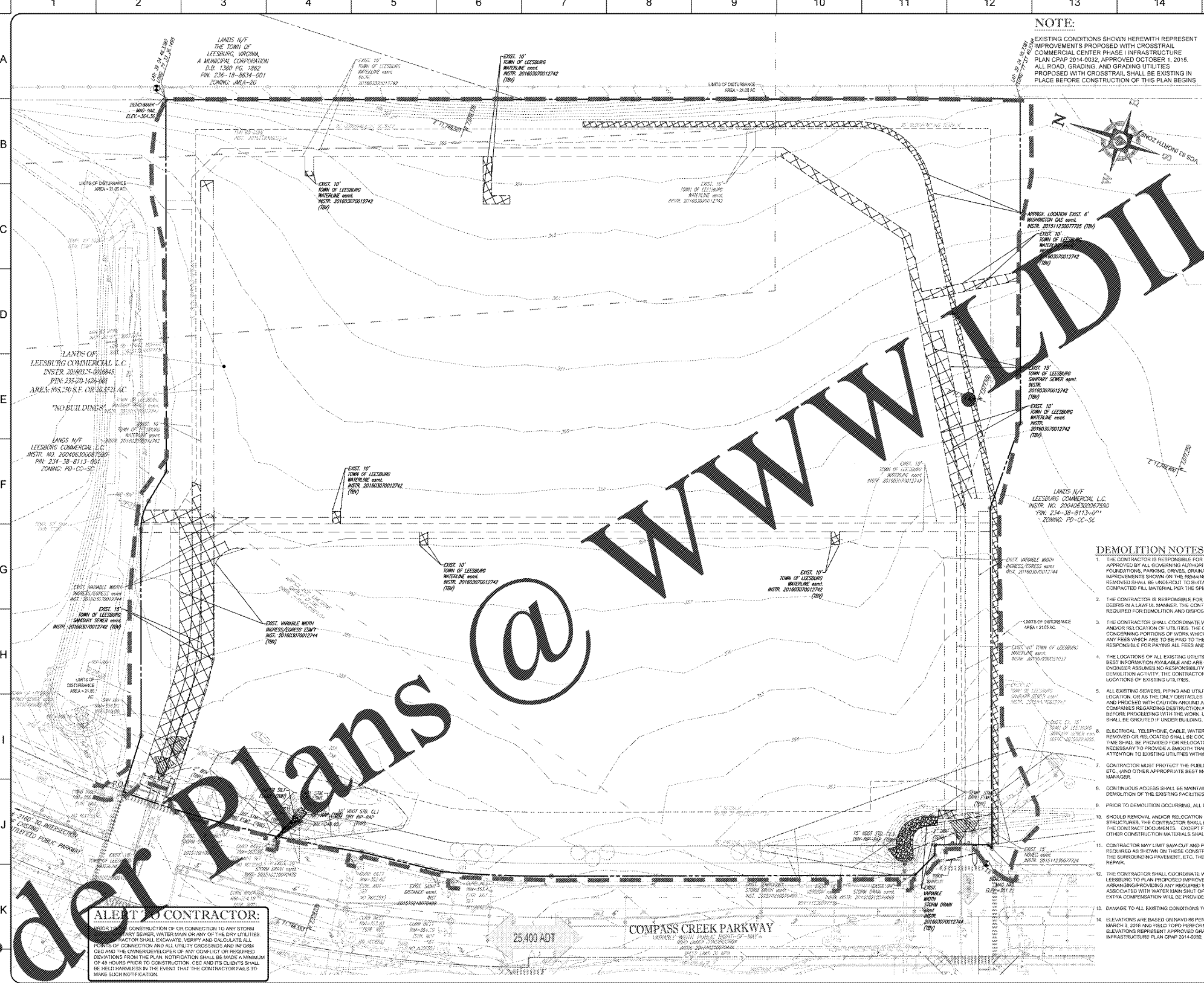


Order Plans @ [www.Walldline.com](http://www.Walldline.com)



**NOTE:**  
EXISTING CONDITIONS SHOWN HEREWITH REPRESENT IMPROVEMENTS PROPOSED WITH CROSSRAIL COMMERCIAL CENTER PHASE I INFRASTRUCTURE PLAN CDP# 2014-0032, APPROVED OCTOBER 1, 2015. ALL ROAD, GRADING, AND GRADING UTILITIES PROPOSED WITH CROSSRAIL SHALL BE EXISTING IN PLACE BEFORE CONSTRUCTION OF THIS PLAN BEGINS.

DEMOLITION/REMOVAL LEGEND	
	DEMOLITION/REMOVAL NOTE
	EASEMENT
	LINE
	CONCRETE CURB & GUTTER
	UTILITY POLE WITH LINE
	POLE
	TOWER
	LATERAL
	MANHOLE
	SANITARY LABEL
	STORM LABEL
	SANITARY SEWER LATERAL
	UNDERGROUND WATER LINE
	UNDERGROUND ELECTRIC LINE
	UNDERGROUND GAS LINE
	OVERHEAD WIRE
	UNDERGROUND TELEPHONE LINE
	UNDERGROUND CABLE LINE
	STORM SEWER
	SANITARY SEWER MANHOLE
	HYDRANT
	SANITARY MANHOLE
	STORM MANHOLE
	WATER METER
	GAS METER
	VALVE
	VALVE
	GAS METER
	LIMIT OF DISTURBANCE
	TO BE REMOVED
	TO BE RELOCATED
	TO BE VACATED
	PORTION OF EASEMENT TO BE VACATED

- DEMOLITION NOTES**
1. THE CONTRACTOR IS RESPONSIBLE FOR THE DEMOLITION, REMOVAL, AND DISPOSAL (BY LOCATION APPROVED BY ALL GOVERNING AUTHORITIES) OF ALL STRUCTURES, WALLS, FLARES, FOUNDATIONS, PARKING, DRIVES, DRIVEWAYS, STRUCTURES, UTILITIES, ETC., SUCH THAT THE IMPROVEMENTS SHOWN ON THE REMAINING PLANS CAN BE CONSTRUCTED. ALL FACILITIES TO BE REMOVED SHALL BE UNDERGUTTED TO SUITABLE MATERIAL AND BROUGHT TO GRADE WITH SUITABLE COMPACTED FILL MATERIAL PER THE SPECIFICATIONS.
  2. THE CONTRACTOR IS RESPONSIBLE FOR REMOVING ALL DEBRIS FROM THE SITE AND DISPOSING THE DEBRIS IN A LAWFUL MANNER. THE CONTRACTOR IS RESPONSIBLE FOR OBTAINING ALL PERMITS REQUIRED FOR DEMOLITION AND DISPOSAL.
  3. THE CONTRACTOR SHALL COORDINATE WITH RESPECTIVE UTILITY COMPANIES PRIOR TO THE REMOVAL AND/OR RELOCATION OF UTILITIES. THE CONTRACTOR SHALL COORDINATE WITH THE UTILITY COMPANY CONCERNING PORTIONS OF WORK WHICH MAY BE REQUIRED BY THE UTILITY COMPANY. FEES AND ANY FEES WHICH ARE TO BE PAID TO THE UTILITY COMPANY FOR THEIR SERVICES. THE CONTRACTOR IS RESPONSIBLE FOR PAYING ALL FEES AND CHARGES.
  4. THE LOCATIONS OF ALL EXISTING UTILITIES SHOWN ON THIS PLAN HAVE BEEN DETERMINED FROM THE BEST INFORMATION AVAILABLE AND ARE GIVEN FOR THE CONTRACTOR. THE CONTRACTOR ASSUMES NO RESPONSIBILITY FOR THEIR ACCURACY PRIOR TO THE START OF ANY DEMOLITION ACTIVITY. THE CONTRACTOR SHALL NOTIFY THE UTILITY COMPANIES FOR ON-SITE LOCATIONS OF EXISTING UTILITIES.
  5. ALL EXISTING SEWERS, PIPING AND UTILITIES SHOWN ARE NOT TO BE INTERPRETED AS THE EXACT LOCATION OR AS THE ONLY OBSTACLES THAT MAY OCCUR ON THE SITE. VERIFY EXISTING CONDITIONS AND PROCEED WITH CAUTION AROUND ANY ANTICIPATED FEATURES. ADVISE TO ALL UTILITY COMPANIES REGARDING DESTRUCTION AND REMOVAL OF ALL SERVICE LINES AND CAP ALL LINES BEFORE PROCEEDING WITH THE WORK. UTILITIES DETERMINED TO BE ABANDONED AND LEFT IN PLACE SHALL BE GROUTED IF UNDER BUILDING.
  6. ELECTRICAL, TELEPHONE, CABLE, WATER, FIBER OPTIC CABLE AND/OR GAS LINES NEEDING TO BE REMOVED OR RELOCATED SHALL BE COORDINATED WITH THE AFFECTED UTILITY COMPANY. ADEQUATE TIME SHALL BE PROVIDED FOR RELOCATION AND CLOSE COORDINATION WITH THE UTILITY COMPANY IS NECESSARY TO PROVIDE A SMOOTH TRANSITION IN UTILITY SERVICE. CONTRACTOR SHALL PAY CLOSE ATTENTION TO EXISTING UTILITIES WITHIN THE ROAD RIGHT-OF-WAY DURING CONSTRUCTION.
  7. CONTRACTOR MUST PROTECT THE PUBLIC AT ALL TIMES WITH FENCING, BARRICADES, ENCLOSURES, ETC. (AND OTHER APPROPRIATE BEST MANAGEMENT PRACTICES) AS APPROVED BY CONSTRUCTION MANAGER.
  8. CONTINUOUS ACCESS SHALL BE MAINTAINED FOR THE SURROUNDING PROPERTIES AT ALL TIMES DURING DEMOLITION OF THE EXISTING FACILITIES.
  9. PRIOR TO DEMOLITION OCCURRING, ALL EROSION CONTROL DEVICES ARE TO BE INSTALLED.
  10. SHOULD REMOVAL AND/OR RELOCATION ACTIVITY DAMAGE FENCING, LIGHTING AND/OR STORM DRAIN STRUCTURES, THE CONTRACTOR SHALL PROVIDE NEW MATERIALS/STRUCTURES IN ACCORDANCE WITH THE CONTRACT DOCUMENTS. EXCEPT FOR MATERIALS DESIGNED TO BE RELOCATED ON THIS PLAN, ALL OTHER CONSTRUCTION MATERIALS SHALL BE NEW.
  11. CONTRACTOR MAY LIMIT SAW CUT AND PAVEMENT REMOVAL TO ONLY THOSE AREAS WHERE IT IS REQUIRED AS SHOWN ON THESE CONSTRUCTION PLANS BUT IF ANY DAMAGE IS INCURRED ON ANY OF THE SURROUNDING PAVEMENT, ETC., THE CONTRACTOR SHALL BE RESPONSIBLE FOR ITS REMOVAL AND REPAIR.
  12. THE CONTRACTOR SHALL COORDINATE WATER MAIN WORK WITH LOUDOUN COUNTY AND THE TOWN OF LEESBURG TO PLAN PROPOSED IMPROVEMENTS. CONTRACTOR WILL BE RESPONSIBLE FOR ARRANGING/PROVIDING ANY REQUIRED WATER MAIN SHUT-OFFS DURING CONSTRUCTION. ANY COSTS ASSOCIATED WITH WATER MAIN SHUT-OFFS WILL BE THE RESPONSIBILITY OF THE CONTRACTOR AND NO EXTRA COMPENSATION WILL BE PROVIDED.
  13. DAMAGE TO ALL EXISTING CONDITIONS TO REMAIN WILL BE REPLACED AT CONTRACTOR'S EXPENSE.
  14. ELEVATIONS ARE BASED ON NAVD83 PER CONTROL SURVEY PROVIDED BY DEWEYBERRY ENGINEERING ON MARCH 2, 2015 AND FIELD TOPS PROVIDED BY BOHLER ENGINEERING ON MARCH 15, 2015. OFFSET ELEVATIONS REPRESENT APPROVED CHANGING WITH CROSSRAIL COMMERCIAL CENTER PHASE I INFRASTRUCTURE PLAN CDP# 2014-0032, APPROVED OCTOBER 1, 2015.

**ALERT TO CONTRACTOR:**  
PRIOR TO CONSTRUCTION OR DISCONNECTION TO ANY STORM OR SANITARY SEWER, WATER MAIN OR ANY OF THE OTHER UTILITIES, THE CONTRACTOR SHALL EXCAVATE, VERIFY AND CALCULATE ALL EXISTING UTILITIES AND ALL UTILITY CROSSINGS AND RECORD THE LOCATION AND DEPTH OF ANY CONFLICT OR SUSPECTED CONFLICTS FROM THE PLAN. NOTIFICATION SHALL BE MADE A MINIMUM OF 48 HOURS PRIOR TO CONSTRUCTION. CEC AND ITS CLIENTS SHALL BE HELD HARMLESS IN THE EVENT THAT THE CONTRACTOR FAILS TO MAKE SUCH NOTIFICATION.

REVISIONS	
	REVISED PER COUNTY AND TOWN COMMENTS
	REVISED PER COUNTY AND TOWN COMMENTS
	REVISED PER COUNTY AND TOWN COMMENTS

THE FOLLOWING STATES REQUIRE NOTIFICATION BY REGISTERED PROFESSIONALS TO ALL PERSONS PARTICIPATING IN OBTAINING THE EARTH SURFACE ALLOWANCE BY THE STATE OF VIRGINIA. BOHLER ENGINEERING, THE OFFICE OF ARCHITECT, PLANNING & ENGINEERING, INC. 1400 SOUTH MAIN STREET, SUITE 200, FARMERSVILLE, VA 22434  
Phone: (703) 706-6500  
Fax: (703) 706-6501  
VA@BohlerEng.com

**BOHLER ENGINEERING**

2288 DAVIS DRIVE, SUITE 250  
STERLING, VIRGINIA 20164  
Phone: (703) 706-6500  
Fax: (703) 706-6501  
VA@BohlerEng.com

EXISTING CONDITIONS/DEMOLITION PLAN  
WALMART SUPERCENTER #1904-005 - SPAM #1  
CATOCCTIN ELECTION DISTRICT  
LEESBURG, LOUDOUN COUNTY, VA  
WAL-MART STORES, INC. BENTONVILLE, AR

DRAWN	
GRP	CHECKED
MJB	DATE
12/22/16	SCALE
1" = 50'	SHEET NO.
5148000	SHEET
DM-1	SHEET 7 OF 103