

SHEET NOTES

1. FOOD SERVICE EQUIPMENT INSTALLED BY GC UNO ON FIXTURE PLAN, REF. GROCERY FIXTURE PLANS.
2. LOCATE ALL RACKS LESS THAN 44" DEEP 3" FROM WALLS AND COLUMNS UNLESS NOTED OTHERWISE.
3. EQUIPMENT LOCATIONS ARE DESIGNED TO MEET HEALTH REQUIREMENTS, OPERATIONS, AND SAFETY COMPLIANCE. ANY CHANGES TO LAYOUT OR EQUIPMENT MUST BE DIRECTED TO THE WALMART DESIGN TEAM.
4. REFERENCE FR2 FOR FURNISHING SCHEDULE AND EQUIPMENT LEGEND.

RETAIL DESIGN COLLABORATIVE
 Form Date: 03/11/10
 2113 25th Ave
 dcollab@live.com

STIPULATION FOR THE DRAWING AND REPRESENTATION OF THE PROJECT: THIS DRAWING IS FOR INFORMATIONAL PURPOSES ONLY AND IS NOT TO BE SIGNED. ANY CHANGES TO LAYOUT OR EQUIPMENT MUST BE DIRECTED TO THE WALMART DESIGN TEAM.

CONSULTANTS

Walmart
 LEESBURG, VIRGINIA
 STORE NO. 1904
 JOB NUMBER: 11904-02 | PHOTO: C-HG-SS-LQ

ISSUE BLOCK

OTB	11/30/17

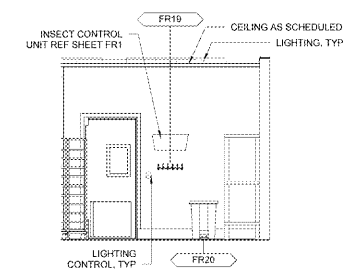
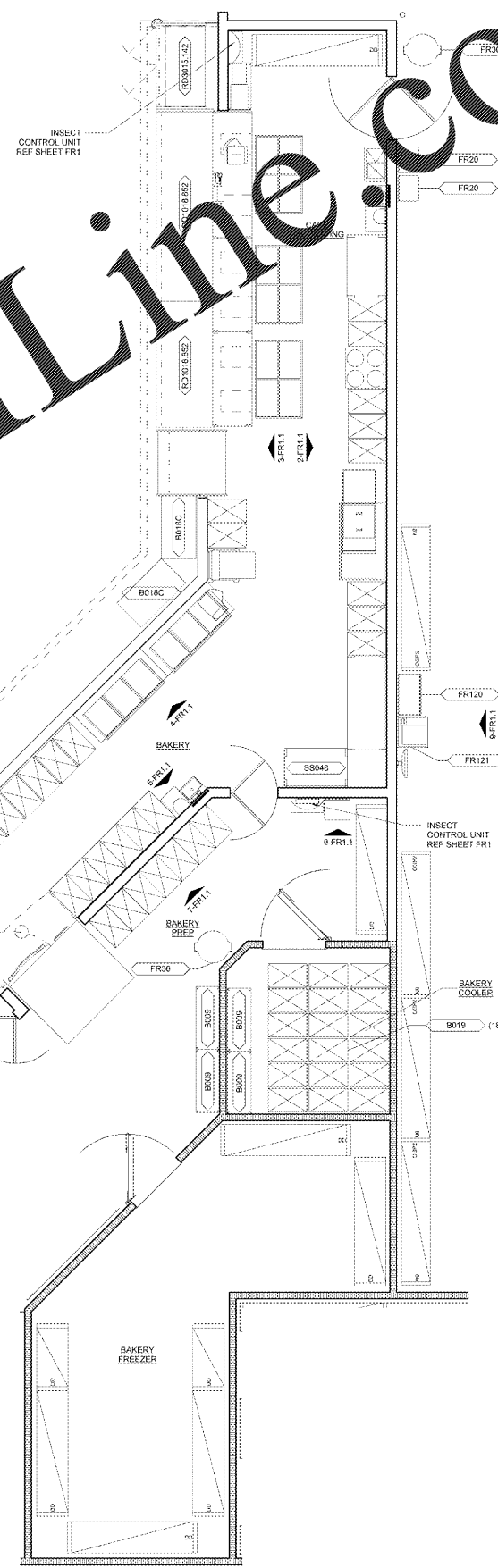
CHECKED BY: RW
 DRAWN BY: EH
 PROTO CYCLE: 04/28/17
 DOCUMENT DATE: 09/13/17

BID SET NOT FOR CONSTRUCTION

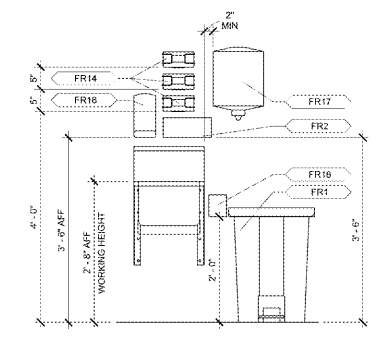
THIS SHEET IS INCLUDED FOR INFORMATIONAL PURPOSES ONLY AND IS NOT TO BE SIGNED

BAKERY FF AND E (NOT IN PERMIT SET)

SHEET: FR.1.1

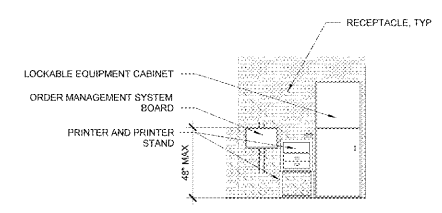


8 ENLARGED BAKERY PREP ELEVATION
 1/4" = 1'-0"

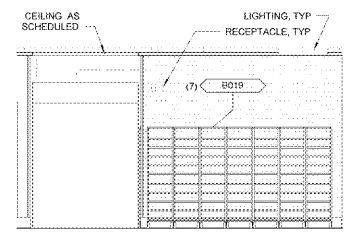


6 ENLARGED SINK ELEVATION
 3/4" = 1'-0"

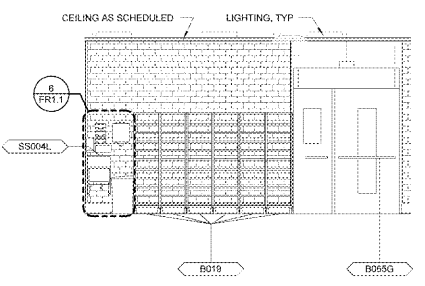
- NOTES:
1. BLOCKING AT WALL MOUNTED HAND SINK
 2. SINK HAND SINK INSTALLED TO 2'-6" WORKING HEIGHT
 3. REF PLANS FOR HAND SINK TYPE
 4. SIM CONDITION REF PLAN FOR FR1 LOCATION



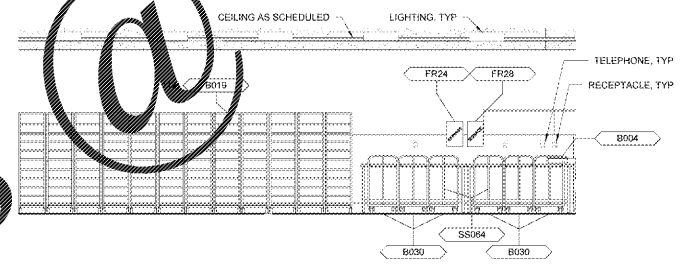
9 ENLARGED OGP EQUIPMENT ELEVATION
 1/4" = 1'-0"



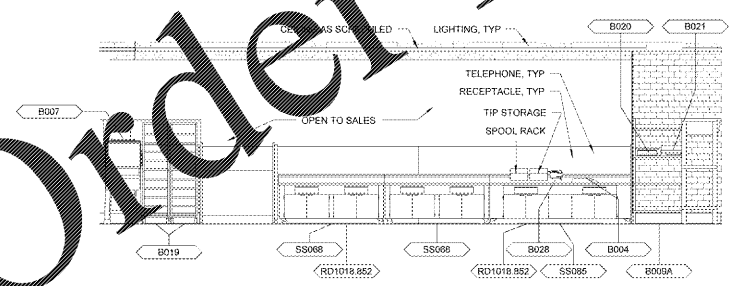
7 ENLARGED BAKERY PREP ELEVATION
 1/4" = 1'-0"



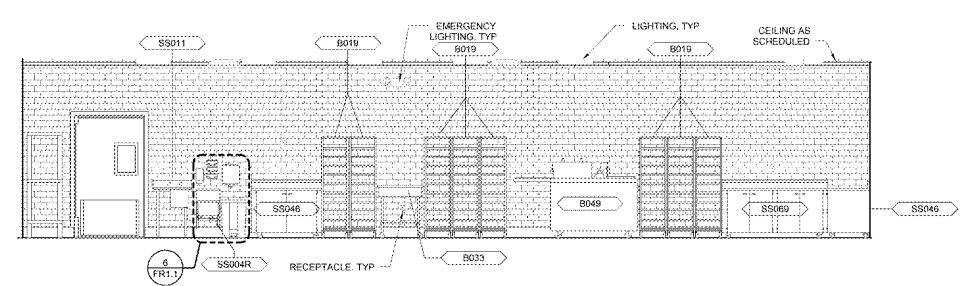
5 ENLARGED BAKERY ELEVATION
 1/4" = 1'-0"



4 ENLARGED BAKERY ELEVATION
 1/4" = 1'-0"



3 ENLARGED CAKE DECORATING ELEVATION
 1/4" = 1'-0"



2 ENLARGED CAKE DECORATING ELEVATION
 1/4" = 1'-0"

1 ENLARGED BAKERY PLAN
 1/4" = 1'-0"

Order Plans @ www.LDILine.com

www.LDILine.com