

GENERAL AUTO CENTER NOTES

1. SERVICE PIT UNCLASSIFIED LOCATION PER NEC CHAPTER 5. CLASS I LIQUIDS ARE NOT TRANSFERRED, AND EXHAUST VENTILATION IS IN EXCESS OF 1 CFM PER SQUARE FOOT OF FLOOR AREA TAKEN FROM A POINT WITHIN 12" OF THE FLOOR.

KEYNOTES

- 16.020 PROVIDE PORCELAIN KEYLESS FIXTURE AND 100V A-19 ROUGH SERVICE LAMP.
- 16.024 CONNECT CIRCUIT TO DUAL TAP CIRCUIT BREAKER INDICATED. CONNECT CIRCUIT CONTAINING NIGHT EMERGENCY LIGHTING TO UNSWITCHED TERMINATION IN MAIN PANEL.
- 16.030 PROVIDE WIP SPRING WOUND INTERNAL 120/277V, 0-30 MINUTE, NO HOLD TIME SWITCH IN AREAS WITH FLOOR DRAINAGE. SWITCH DOWN FENCE POSITION. MOUNT 6" POST.
- 16.220 INSTALL REFRABRATED ELEC DISTRIBUTION CENTER (EDC) WITH INTERNAL WIRING. INTERIOR PURPOSES ONLY. THE ENTIRE ASSEMBLY SHALL ARRIVE COMPLETELY PRE-WIRED AND TESTED BY A NATIONALLY RECOGNIZED TESTING LABORATORY FOR LISTED USE.
- ELECTRONIC ARTICLE SURVEILLANCE SYSTEM PROVIDE 2" CONDUITS (WITH PULL WIRE) FROM POWER MODULE TO EAS PEDESTAL LOCATION AS SHOWN ON PLANS, WITH OVERALL LENGTH OF EACH CONDUIT NOT TO EXCEED 90'. STUB CONDUITS TO ABOVE FINISHED FLOOR AT EAS PEDESTAL LOCATION AND EXTEND CONDUIT UP WALL TO NEMA 1 120/277V SCREW COVER PULL BOX (HOPKMAN WASE12X12X OR EQUAL) AT THE HEIGHT OF THE EAS RECEPTACLE. PROVIDE BUSHINGS AT EACH END. PROVIDE 3/4" CONDUITS FROM PULL BOX TO EAS POWER MODULE.
- 16.227 ELECTRIC WATER COOLER RECEPTACLE: CONCEAL WITHIN CABINET PER MANUFACTURER'S REQUIREMENTS.
- 16.228 INSTALL RECEPTACLE IN PROVIDED DATA ENCLOSURE. COORDINATE LOCATION OF RECEPTACLE WITH ISD CABLE VENDOR. FINAL LOCATION TO BE DETERMINED BY CABLE AND TELECOM SERVICES.
- 16.232 AUTOMATIC DOOR OPERATOR: VERIFY LOCATION WITH MANUFACTURER'S RECOMMENDATIONS PRIOR TO INSTALLATION. ALL CONDUIT AND WIRING SHALL BE CONCEALED AT MAIN ENTRANCE DOORS.
- 16.239 AUTOMATIC DOOR CONTROLS: INSTALL BENEATH COUNTER, ACCESS CONTROL CONSOLE FURNISHED WITH AUTOMATIC DOOR. PROVIDE JUNCTION BOXES, CONDUITS, AND LOW VOLTAGE WIRING (SHOWN DASHED) AS REQUIRED. COORDINATE EXACT LOCATIONS AND REQUIREMENTS WITH MANUFACTURER'S RECOMMENDATIONS PRIOR TO INSTALLATION.
- 16.243 INSTALL MANUFACTURER FURNISHED JUNCTION BOX ABOVE DOOR HEADER FOR SECURITY CABLING. PROVIDE 1" CONDUIT WITH PULL WIRE FROM JUNCTION BOX TO STRUCTURE. TERMINATE AT BAR JOIST WITH BUSHING. COORDINATE INSTALLATION WITH MANUFACTURER'S REQUIREMENTS.
- 16.444 PROVIDE 208V1 CIRCUITRY TO LIFT MOTOR AND 120V1 CIRCUITRY TO RECEPTACLES ON MANUFACTURER FURNISHED JUNCTION BOX ON ACCESSORY POST. ROUTE LIQUID TIGHT FLEXIBLE METAL CONDUIT IN POST. TRANSITION TO PVC AND ROUTE UNDERGROUND TO EDC. COORDINATE INSTALLATION WITH MANUFACTURER'S REQUIREMENTS.
- 16.445 ELECTROMAGNETIC LOCK: INSTALL PUSH BUTTON MOTION SENSOR AND LOW VOLTAGE TRANSFORMER FURNISHED WITH DOOR HARDWARE PER MANUFACTURER'S INSTRUCTIONS. PROVIDE JUNCTION BOXES, CONDUIT AND LOW VOLTAGE WIRING AS REQUIRED. MOTION SENSOR SHALL BE ON LUBE AND TIRE MOUNTING AREA SIDE OF DOOR. SET MOTION SENSOR TO RELEASE LOCK FOR 20 SECONDS UPON ACTIVATION.
- 16.600 PROVIDE SURFACE MOUNTED ALARM JUNCTION BOX (WITH VERTICAL RACEWAY) MOUNTED 2" ABOVE AND 6" IN FROM STRIKE SIDE OF DOOR FRAME.
- 16.610 PROVIDE SURFACE MOUNTED ALARM JUNCTION BOX (WITH VERTICAL RACEWAY) AT 48" (UNLESS NOTED OTHERWISE).
- 16.619 PROVIDE RECESSED ALARM JUNCTION BOX IN CEILING WITH 4"x3"x1-1/2" EXTENSION RING WITH RACEWAY ROUTED TO NEAREST ACCESSIBLE CEILING SPACE.
- 16.650 CONDUIT SLEEVE: PROVIDE 1-1/2" CONDUIT SLEEVE WITH BUSHINGS ABOVE BAR JOIST (UNLESS NOTED OTHERWISE).
- 16.658 CONDUIT SLEEVE: PROVIDE 2" CONDUIT (WITH PULL WIRE FROM BAR JOIST TO PROVIDED DATA ENCLOSURE AND TERMINATE WITH COUPLER AND THREADED BUSHINGS) COORDINATE FINAL LOCATION WITH CABLE AND TELECOM SERVICES PRIOR TO INSTALLATION.

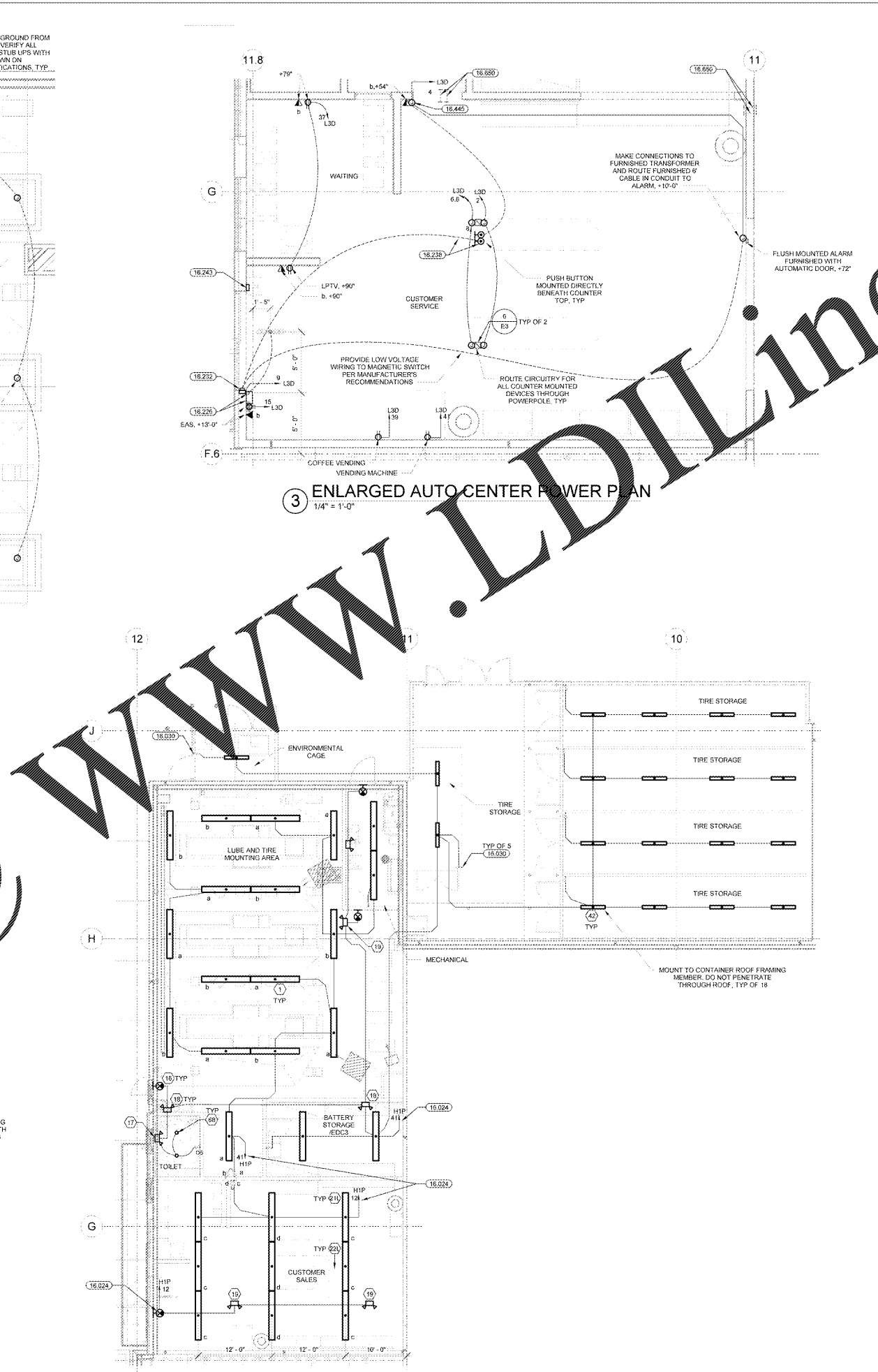


ISSUE BLOCK	11/30/17	OTB
CHECKED BY:	SAG	
DRAWN BY:	GAR	
FILE NAME:	E5	
PROTO CYCLE:	04/28/17	
DOCUMENT DATE:	09/13/17	

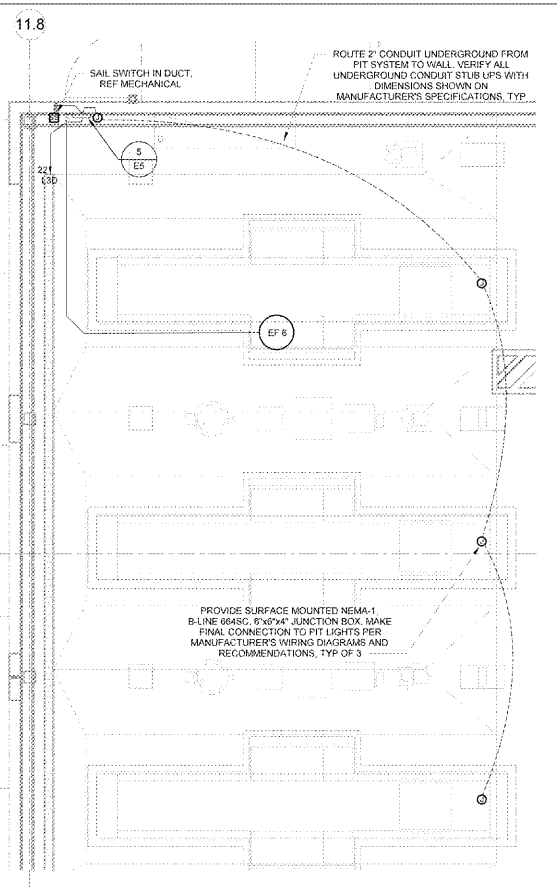
BID SET NOT FOR CONSTRUCTION

AUTO CENTER ELECTRICAL PLANS AND DETAILS

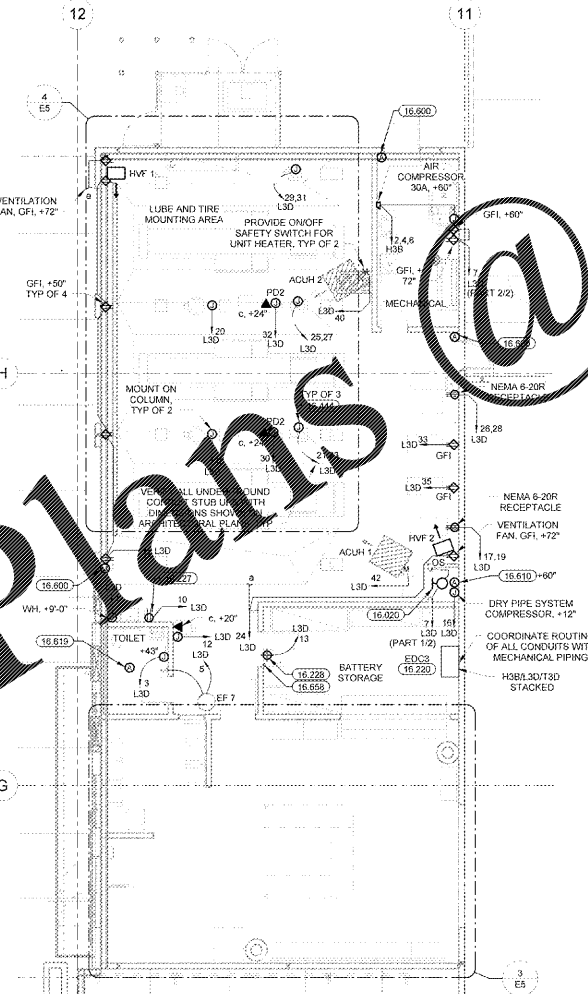
SHEET: **E5**



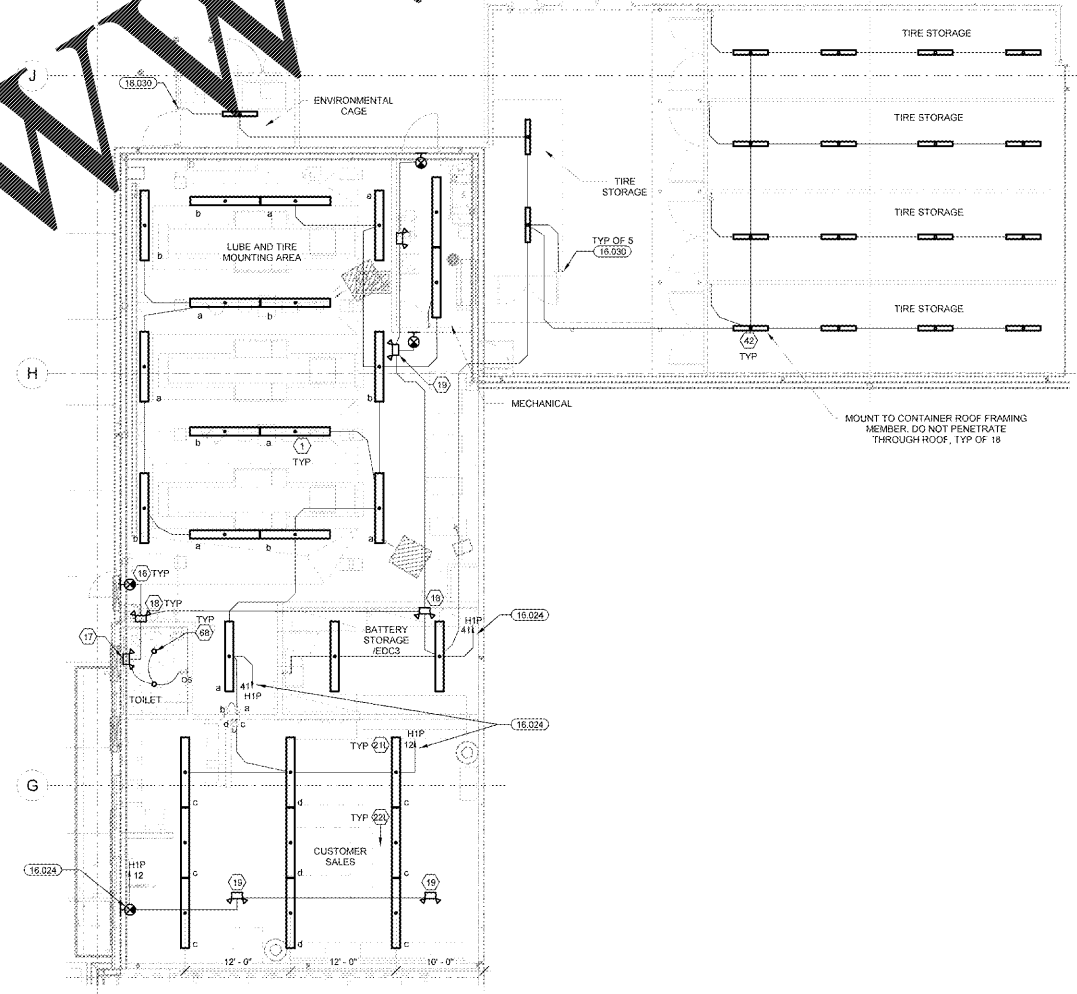
3 ENLARGED AUTO CENTER POWER PLAN
1/4" = 1'-0"



4 AUTO CENTER POWER PLAN
1/4" = 1'-0"

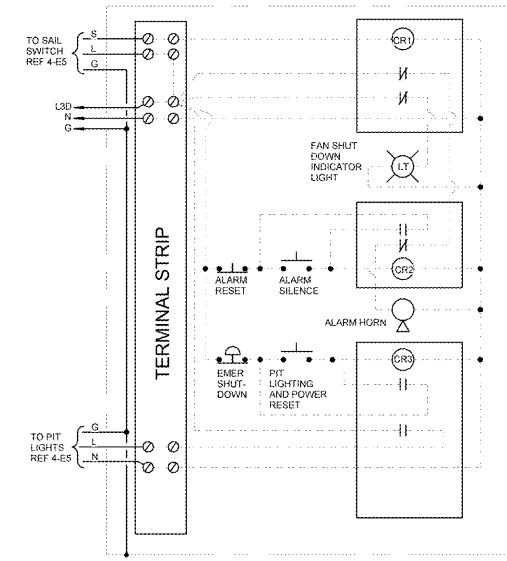


2 AUTO CENTER POWER PLAN
1/8" = 1'-0"



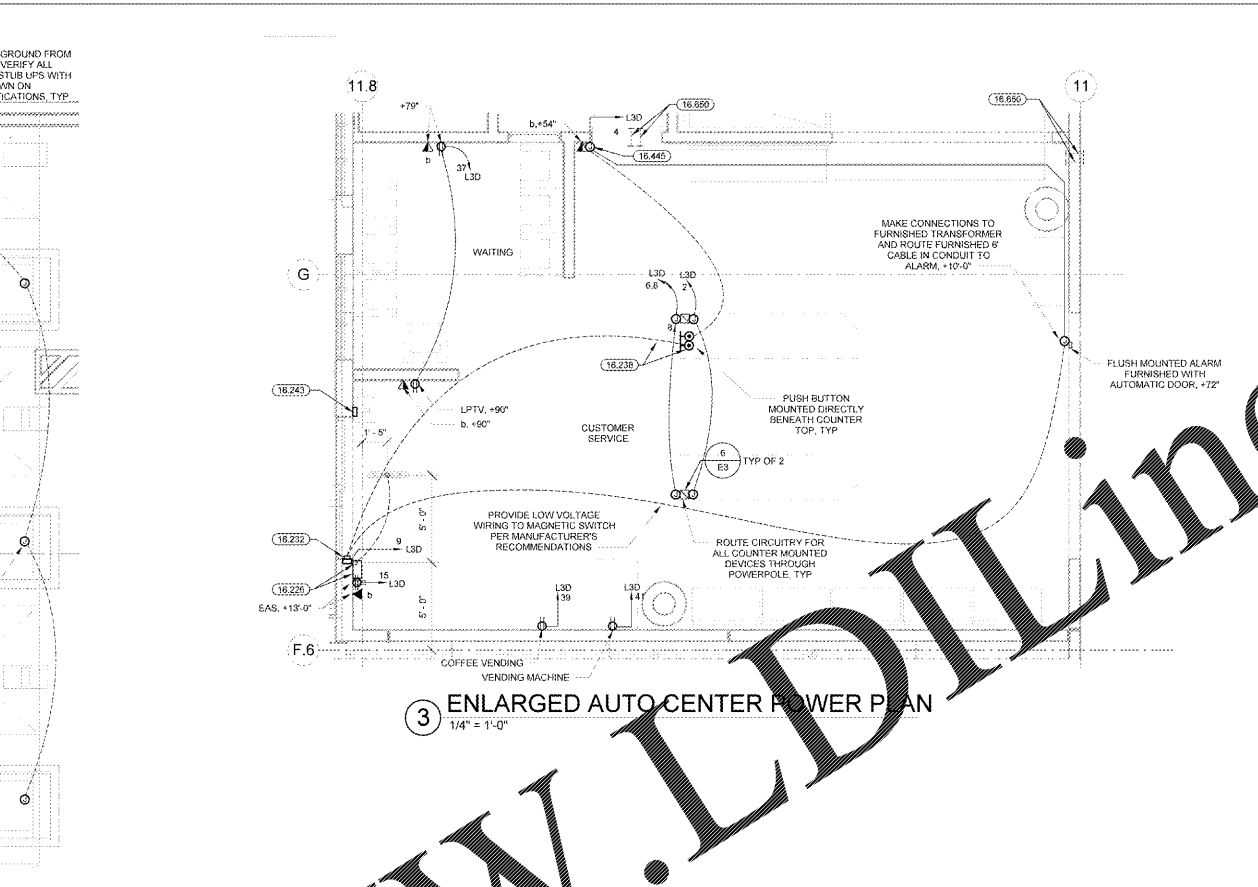
1 AUTO CENTER LIGHTING PLAN
1/8" = 1'-0"

PANEL FURNISHED LOOSE WITH EDC, INSTALLED BY CONTRACTOR



5 ZIP PIT ALARM PANEL
NTS

Order Plans @



11.8

11.8

11

12

10

12

11

12

11

12

11

12

11

12

11

1

2

5