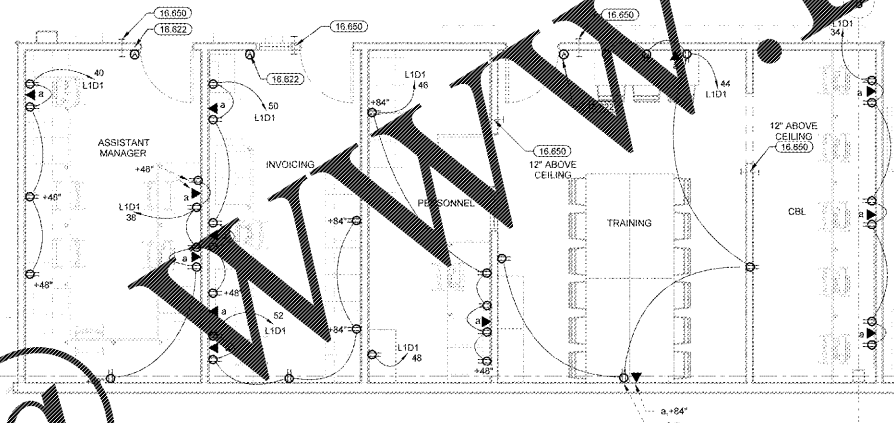
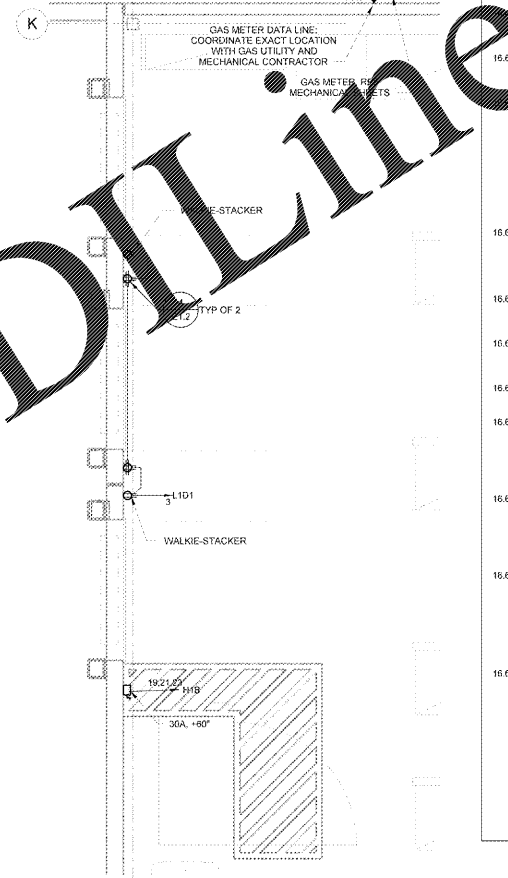


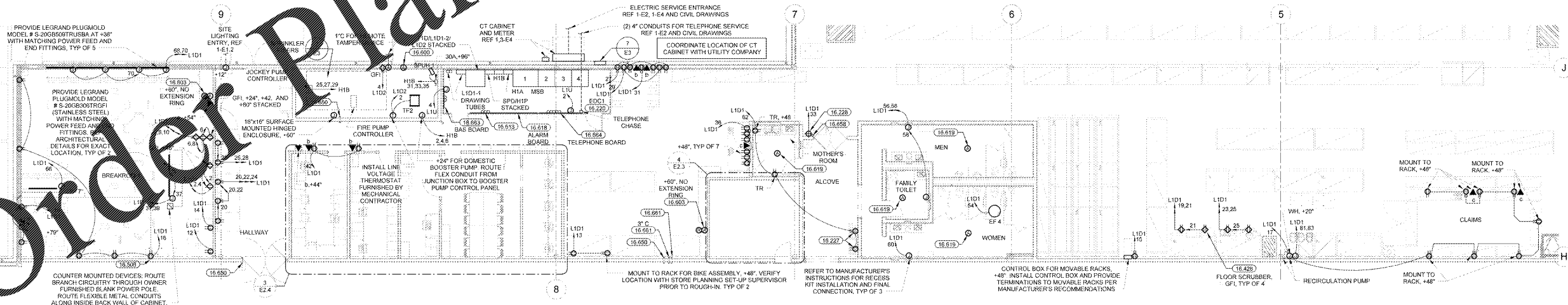
④ GROCERY DOCK POWER PLAN
1/4" = 1'-0"



③ REAR OFFICE POWER PLAN
1/4" = 1'-0"



② G.M. DOCK POWER PLAN
1/4" = 1'-0"



① OFFICE POWER PLAN
1/8" = 1'-0"

KEYNOTES

- 16.220 INSTALL PREFABRICATED ELECTRICAL DISTRIBUTION CENTER (EDC). EQUIPMENT AND INTERNAL WIRING ARE SHOWN FOR INFORMATION PURPOSES ONLY. THE ENTIRE ASSEMBLY WILL ARRIVE COMPLETELY PRE-WIRED AND IS CERTIFIED BY A NATIONALLY RECOGNIZED TESTING LABORATORY FOR ITS INTENDED USE.
- 16.227 ELECTRIC WATER COOLER RECEPTACLE ENCLOSED WITHIN CABINET PER MANUFACTURER'S REQUIREMENTS.
- 16.228 INSTALL RECEPTACLE IN PROVIDED DATA ENCLOSURE. COORDINATE LOCATION OF RECEPTACLE WITH ISD CABLE VENDOR. FINAL LOCATION TO BE DETERMINED BY CABLE AND TELECOM SERVICES.
- 16.427 PROVIDE RECEPTACLE AND 3/4" FROM FINISHED LEVELER. SUBMIT TO CONTROLLER TO RECEPTACLE AND DOCK WIRE PER MANUFACTURER'S INSTALLATION INSTRUCTIONS.
- 16.428 PROVIDE 1/2" FROM MOUNTING DEVICES DIRECTLY BELOW WIREVEST RACK. UTILIZE EXISTING HOLES IN RACK TO BOLT WIREVEST TO THE BACK SHEET POSTS.
- 16.508 INSECT CONTROL PROVIDE BROWN DEVICE AND MAT. PROVIDE AT +66".
- 16.509 PROVIDE 1/2" FROM ALARM JUNCTION BOX AT BACKBOARD TO TOP SIDE OF THE BOTTOM CHORD OF BAR JOIST. TURN HORIZONTAL AND ROUTE TO THE TOP SIDE OF CABLE TRAY WITH THE CONDUIT CONNECTOR AND BUSHING EXTENDING NO MORE THAN 1" OVER CABLE TRAY. PROVIDE (1) 2" CONDUIT (WITH PULL WIRE) FROM BAR JOIST TO PROVIDED DATA ENCLOSURE AND TERMINATE WITH COUPLER AND THREADED BUSHING. COORDINATE FINAL LOCATION WITH CABLE AND TELECOM SERVICES PRIOR TO INSTALLATION.
- 16.603 PROVIDE RECESSED ALARM JUNCTION BOX (WITH VERTICAL RACKWAY) AT +88" WITH 4"x4"x1/2" EXTENSION RING (UNLESS NOTED OTHERWISE).
- 16.616 FIRE ALARM BACKBOARD PROVIDE 120V CONNECTIONS TO FIRE ALARM BACKBOARD EQUIPMENT AS REQUIRED BY BUILDING FIRE ALARM INSTALLER. COORDINATE EXACT PROVISIONS WITH FIRE ALARM INSTALLER PRIOR TO ROUGH-IN.
- 16.619 PROVIDE RECESSED ALARM JUNCTION BOX IN CEILING WITH 4"x4"x1/2" EXTENSION RING WITH RACKWAY ROUTED TO NEAREST ACCESSIBLE CEILING SPACE.
- 16.622 PROVIDE RECESSED 4"x4"x1/2" ALARM JUNCTION BOX (WITH VERTICAL RACKWAY) AT +48" WITH 4"x4"x1/2" EXTENSION RING AND 4"x4" TWO-GANG DEVICE RING.
- 16.650 CONDUIT SLEEVE: PROVIDE 1/2" CONDUIT SLEEVE WITH BUSHINGS ABOVE BAR JOIST (UNLESS NOTED OTHERWISE).
- 16.655 CONDUIT SLEEVE: PROVIDE 2" CONDUIT (WITH PULL WIRE) FROM BAR JOIST TO PROVIDED DATA ENCLOSURE AND TERMINATE WITH COUPLER AND THREADED BUSHING. COORDINATE FINAL LOCATION WITH CABLE AND TELECOM SERVICES PRIOR TO INSTALLATION.
- 16.661 DATA AND PHONE CONDUIT: PROVIDE CONDUIT SLEEVE THROUGH WALL AND ROUTE ABOVE BAR JOIST. UNLESS NOTED OTHERWISE, ROUTE CONDUIT TO THE TOP SIDE OF CABLE TRAY WITH THE CONDUIT CONNECTOR AND BUSHING EXTENDING NO MORE THAN 1" OVER CABLE TRAY.
- 16.663 BUILDING AUTOMATION CONDUITS: PROVIDE (2) 2" CONDUITS (WITH PULL WIRE) FROM BAS BACKBOARD TO TOP SIDE OF THE BOTTOM CHORD OF BAR JOIST. TURN HORIZONTAL AND ROUTE TO THE TOP SIDE OF CABLE TRAY WITH THE CONDUIT CONNECTOR AND BUSHING EXTENDING NO MORE THAN 1" OVER CABLE TRAY. STUB CONDUITS 2" BELOW THE TOP OF BACKBOARD AND TERMINATE WITH BUSHINGS.
- 16.664 TELEPHONE BACKBOARD CONDUITS: PROVIDE (3) 3" CONDUITS (WITH PULL WIRE) FROM BACKBOARD TO TOP SIDE OF THE BOTTOM CHORD OF BAR JOIST. TURN HORIZONTAL AND ROUTE TO THE TOP SIDE OF CABLE TRAY WITH THE CONDUIT CONNECTOR AND BUSHING EXTENDING NO MORE THAN 1" OVER CABLE TRAY. PROVIDE (1) 2" AND (1) 3" CONDUIT (WITH PULL WIRE) TO TOP SIDE OF THE BOTTOM CHORD OF BAR JOIST. TURN HORIZONTAL AND EXTEND OUT OVER AISLEWAY. STUB CONDUITS 2" BELOW THE TOP OF BACKBOARD AT STENCILED CONDUIT ENTRY AREA AND TERMINATE WITH COUPLER AND THREADED BUSHINGS.



CHECKED BY:	SAG
DRAWN BY:	GAR
FILE NAME:	E2.4
PROTO CYCLE:	04/28/17
DOCUMENT DATE:	09/13/17

BID SET
NOT FOR
CONSTRUCTION

ENLARGED
POWER
PLANS

SHEET:
E2.4