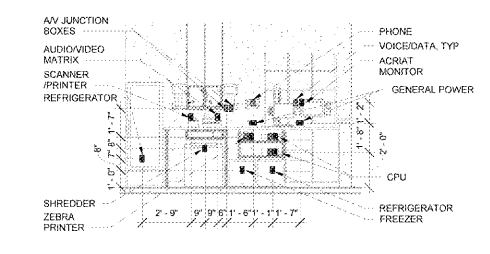
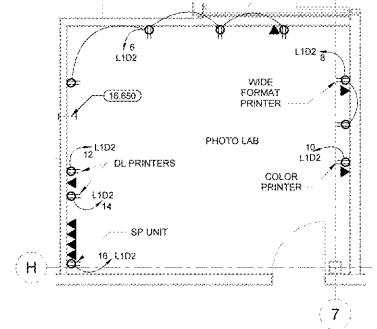


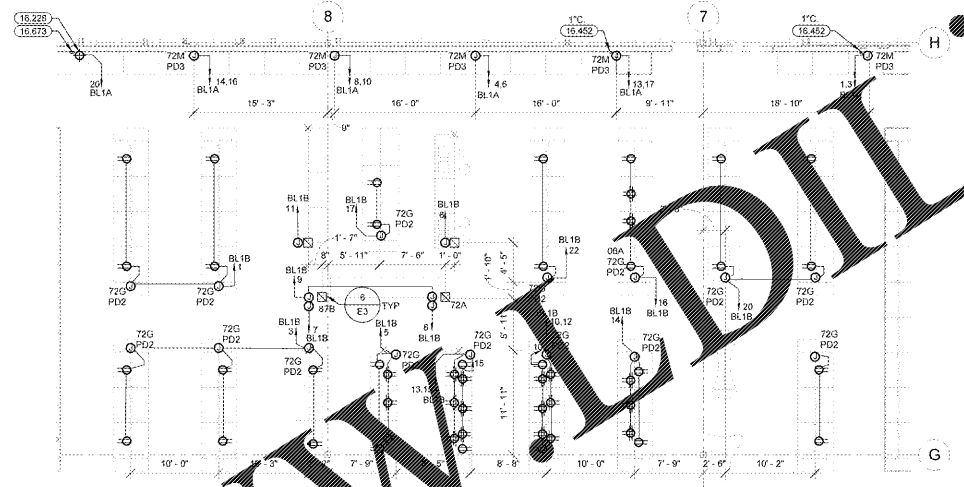
6 PHARMACY ELEVATION
NTS



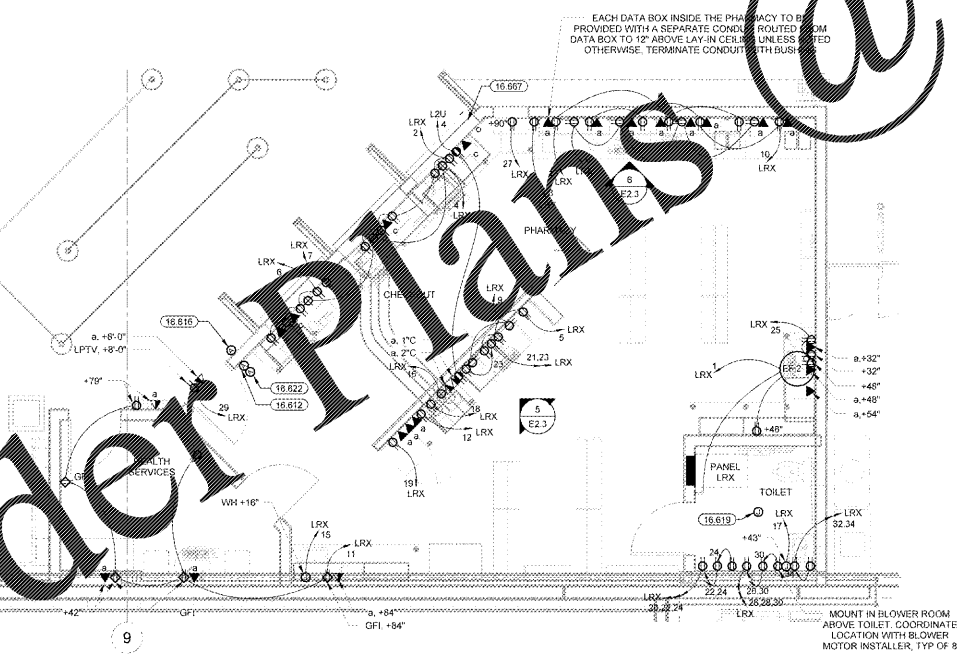
5 PHARMACY ELEVATION WITH DRIVE-THRU
NTS



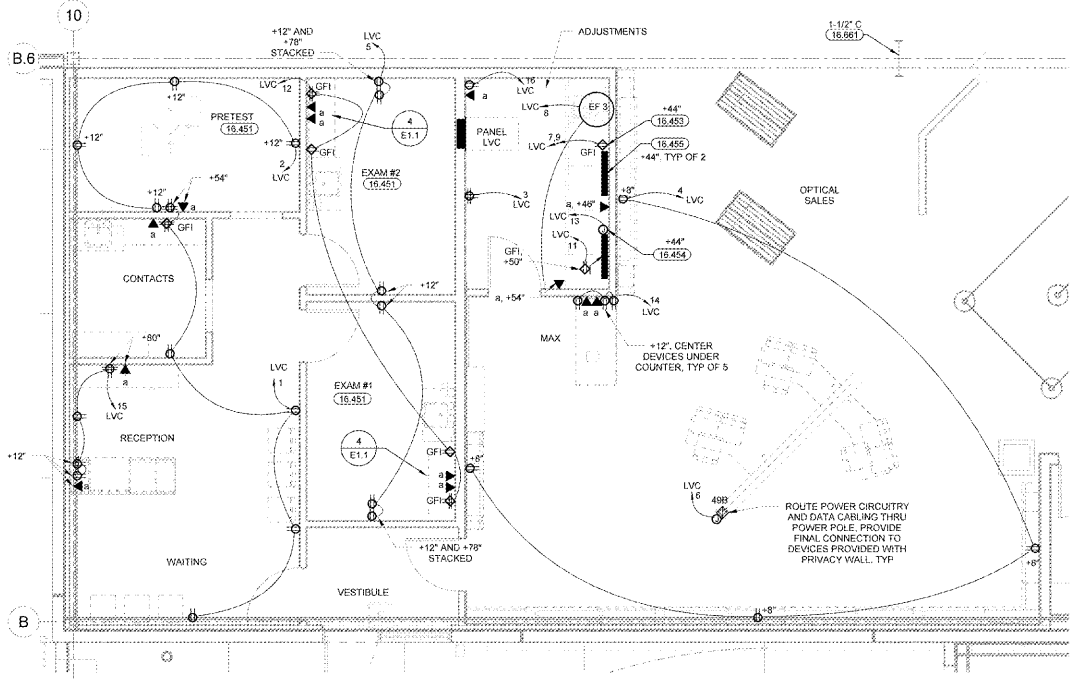
4 PHOTO LAB POWER PLAN
1/4" = 1'-0"



8 ELECTRONICS POWER PLAN
1/4" = 1'-0"



9 PHARMACY POWER PLAN
1/4" = 1'-0"



1 VISION CENTER POWER PLAN
1/4" = 1'-0"

POWER DROP SCHEDULE	
NO	DESCRIPTION
PD1	MOUNT RECEPTACLE(S) ON TOP OF DISPLAY UNITS
PD2	MOUNT RECEPTACLE(S) ON BASE OF DISPLAY UNITS
PD3	PROVIDE DIRECT CONNECTION TO EQUIPMENT
PD4	MOUNT RECEPTACLE AT BAR JOIST AND INSTALL FURNISHED CORD REEL

POWER DROP NOTES

- APPROXIMATELY 40 DAYS PRIOR TO POSSESSION DATE, A REVISION OF THIS PLAN BASED ON THE FINAL MERCHANDISE LAYOUT WILL BE ISSUED TO SHOW FINAL LOCATIONS FOR THE POWER DROPS. THE REVISION PLAN DOES NOT CHANGE THIS WORK WILL BE REISSUED. PRIOR TO INSTALLATION, VERIFY RACKS AS THEY ARE SET. IN ADDITION, FOLLOWING POWER DROP NOTES APPLY:
 - THERE SHALL BE AN ADDITIONAL CHARGE FOR DROP REEL TO BE PROVIDED FOR POWER DROP ZONES DEPENDENT ON THE DISTANCE.
 - POWER DROPS FED FROM TRACK BUSWAY. INSTALL FURNISHED PLUG-IN UNIT AT A POINT ON TRACK BUSWAY NEAREST POWER DROPS.
 - AT CLOSE OF PROJECT THE GENERAL CONTRACTOR AND CONSTRUCTION MANAGER SHALL REVIEW ADDITIONAL OR DELETED POWER DROPS WITH EACH ZONE TO VERIFY ANY ADDITIONAL CHARGES OR CREDITS THAT APPLY DUE TO CHANGES.
 - ADDING OR SUBTRACTING A POWER DROP TO ANY ZONE WILL RESULT IN A CHARGE OR CREDIT ACCORDING TO SPECIAL CONDITIONS.
- PROVIDE JUNCTION BOX AND CIRCUITRY TO NEAREST JOIST ABOVE LOCATION SHOWN ON DRAWING. EXTEND CONDUIT AND CIRCUITRY FROM JUNCTION BOX TO ENDCAP OF DISPLAY RACK (AWAY FROM ACTION ALLEYS).
- PROVIDE JUNCTION AND RECEPTACLE(S) AT DISPLAY RACK SHELVING PER POWER DROP SCHEDULE UNLESS NOTED OTHERWISE ON DRAWING. VERIFY EXACT HEIGHT AND LOCATION OF RECEPTACLE(S) WITH STORE PLANNING SET-UP SUPERVISOR PRIOR TO INSTALLATION.

KEYNOTES

- INSTALL RECEPTACLE IN PROVIDED DATA ENCLOSURE. COORDINATE LOCATION OF RECEPTACLE WITH ISO CABLE VENDOR. FINAL LOCATION TO BE DETERMINED BY CABLE AND TELECOM SERVICES.
- PROVIDE EMT WITH PROPERLY INSTALLED COMPRESSION OR SET SREW TYPE FITTINGS AND AN INSULATED EQUIPMENT GROUNDING CONDUCTOR FOR ALL RACEWAYS SERVING THIS ROOM TO COMPLY WITH NEC HEALTH CARE FACILITIES.
- CONDUIT SYSTEM CONDUIT: STUB CONDUIT (WITH PULL WIRE) FROM BELOW SHELVING UNIT TO BAR JOIST. PROVIDE BUSHING AT EACH END.
- PROVIDE A RECESSED SINGLE-GANG BOX WITH WIREMOLD V2448 SINGLE-GANG DEVICE BOX TO SERVE PLUGMOLD STRIP. PROVIDE THE RECEPTACLE AND COVER PLATE IN THE SURFACE DEVICE BOX.
- PROVIDE A RECESSED SINGLE-GANG BOX WITH WIREMOLD V2448 SINGLE-GANG DEVICE BOX AND BLANK COVER PLATE TO SERVE PLUGMOLD STRIP.
- INSTALL FURNISHED WIREMOLD V2448 SERIES PLUGMOLD FED FROM SURFACE DEVICE BOX.
- PROVIDE RECESSED ALARM JUNCTION BOX (WITH VERTICAL RACEWAY) MOUNTED 2" ABOVE AND 6" IN FROM STRIKE SIDE OF DOOR FRAME.
- PROVIDE RECESSED SWITCH BOX (WITH VERTICAL RACEWAY) AT +48" AND 6" FROM DOOR FRAME. COORDINATE LOCATION WITH AP INSTALLER PRIOR TO ROUGH-IN.
- PROVIDE RECESSED ALARM JUNCTION BOX IN CEILING WITH 4"x4"x12" EXTENSION RING WITH RACEWAY ROUTED TO NEAREST ACCESSIBLE CEILING SPACE.
- PROVIDE RECESSED 4"x4"x12" ALARM JUNCTION BOX (WITH VERTICAL RACEWAY) AT +48" WITH 4"x4"x12" EXTENSION RING AND 4"x4" TWO-GANG DEVICE RING.
- CONDUIT SLEEVE: PROVIDE 1-1/2" CONDUIT SLEEVE WITH BUSHINGS ABOVE BAR JOIST (UNLESS NOTED OTHERWISE).
- DATA AND PHONE CONDUIT: PROVIDE CONDUIT SLEEVE THROUGH WALL AND ROUTE ABOVE BAR JOIST UNLESS NOTED OTHERWISE. ROUTE CONDUIT TO THE TOP SIDE OF CABLE TRAY WITH THE CONDUIT CONNECTOR AND BUSHING EXTENDING NO MORE THAN 1" OVER CABLE TRAY.
- CONDUIT SLEEVE: PROVIDE 3" CONDUIT (WITH PULL WIRE) FROM 12" ABOVE SUSPENDED CEILING TO NEAREST ACCESSIBLE CEILING SPACE AND TERMINATE WITH BUSHINGS.
- CONDUIT SLEEVE: PROVIDE 1-1/2" CONDUITS (WITH PULL WIRE) FROM BAR JOIST TO PROVIDED DATA ENCLOSURE AND TERMINATE WITH COULERS AND THREADED BUSHINGS. COORDINATE FINAL LOCATION WITH CABLE AND TELECOM SERVICES PRIOR TO INSTALLATION.
- CONDUIT SLEEVE: PROVIDE 3" CONDUIT (WITH PULL WIRE) FROM 12" ABOVE SUSPENDED CEILING TO NEAREST ACCESSIBLE CEILING SPACE AND TERMINATE WITH BUSHINGS.
- CONDUIT SLEEVE: PROVIDE 1-1/2" CONDUITS (WITH PULL WIRE) FROM BAR JOIST TO PROVIDED DATA ENCLOSURE AND TERMINATE WITH COULERS AND THREADED BUSHINGS. COORDINATE FINAL LOCATION WITH CABLE AND TELECOM SERVICES PRIOR TO INSTALLATION.

RETAL DESIGN COLLABORATIVE

CONSULTANTS

Randall C. Hines
ARCHITECT
1000 W. BROADWAY, SUITE 1000
LEESBURG, VA 22079
PHONE: 703.771.1100
WWW.RANDALLCHINES.COM

Walmart
LEESBURG, VIRGINIA
STORE NO. 1804
JOB NUMBER: 118926 PHOTO: 189 SGL-01

CHECKED BY: SAG

DRAWN BY: GAR

FILE NAME: E2.3

PROTO CYCLE: 04/28/17

DOCUMENT DATE: 09/13/17

BID SET NOT FOR CONSTRUCTION

ENLARGED POWER PLANS

SHEET: E2.3

Order Plans @