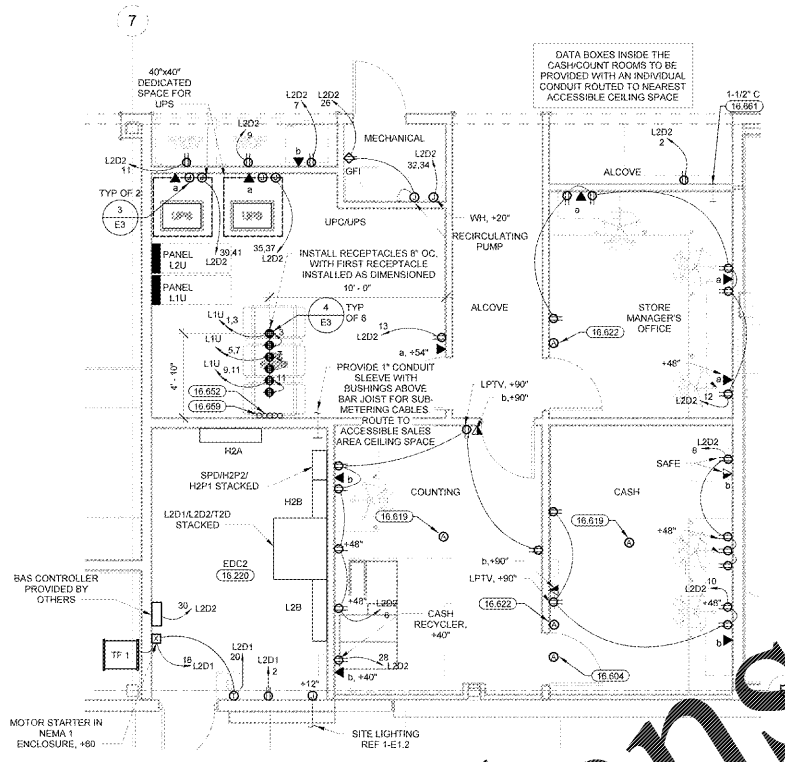
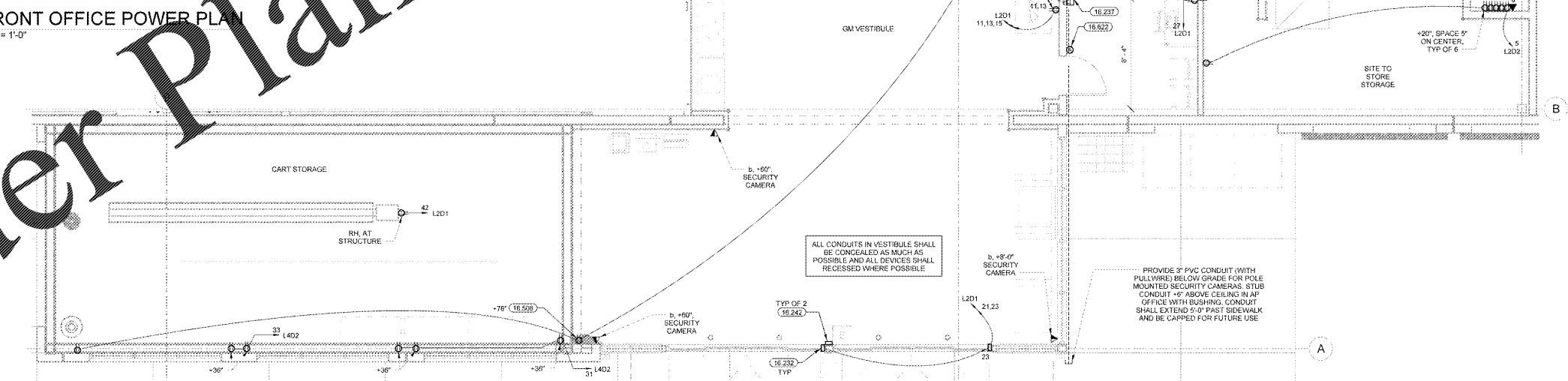


3 GROCERY VESTIBULE POWER PLAN  
1/8" = 1'-0"



2 FRONT OFFICE POWER PLAN  
1/4" = 1'-0"



1 G.M. VESTIBULE POWER PLAN  
1/4" = 1'-0"

- KEYNOTES**
- 16.220 INSTALL PREFABRICATED ELECTRICAL DISTRIBUTION CENTER (EDC), EQUIPMENT AND INTERNAL WIRING ARE SHOWN FOR INFORMATION PURPOSES ONLY. THE ENTIRE ASSEMBLY WILL ARRIVE COMPLETELY PRE-WIRED AND IS CERTIFIED BY A NATIONALLY RECOGNIZED TESTING LABORATORY FOR ITS INTENDED USE.
  - 16.221 SURFACE MOUNT JUNCTION BOX WITH BLANK COVER PLATE 8" ABOVE CEILING FOR SIGNAGE.
  - 16.222 ELECTRIC WATER COOLER RECEPTACLE CONCEAL WITHIN CABINET PER MANUFACTURER'S REQUIREMENTS.
  - 16.232 AUTOMATIC DOOR OPERATOR. VERIFY LOCATION WITH MANUFACTURER'S RECOMMENDATIONS PRIOR TO INSTALLATION. ALL CONDUIT AND WIRING SHALL BE CONCEALED AT MAIN ENTRANCE DOORS.
  - 16.237 ELECTRONIC ARTICLE SURVEILLANCE SYSTEM (EAS) (PULL WIRE) FROM EAST TO WEST THROUGH EAST PEDESTAL LOCATIONS WITHIN VESTIBULE WITH OVERALL LENGTH OF EACH CONDUIT NOT TO EXCEED 100'. STUB CONDUITS FINISH FLOOR AT EAST PEDESTAL AND EXTEND CONDUIT IN WALL AND STUB OUT INTO NEARBY 12"X12" OR EQUAL AT THE RECEPTACLE. PROVIDE BUS BAR AT EAST END. PROVIDE 3/4" CONDUITS FROM REE BOX TO EAS POWER MODULE.
  - 16.242 INSTALLED BY MANUFACTURER FURNISHED JUNCTION BOX CENTERED AT DOOR HEADER FOR SECURITY CABLING. PROVIDE 1" CONDUIT WITH PULL WIRE FROM JUNCTION BOX TO STRUCTURE. TERMINATE AT BAR JOIST WITH BUSHING. COORDINATE INSTALLATION WITH MANUFACTURER'S REQUIREMENTS.
  - 16.410 COUNTER MOUNTED DEVICES. STUB OUT OF WALL AT 8". ROUTE FLEXIBLE METAL CONDUITS ALONG BACK WALL OF CABINET. MOUNT DEVICES WITHIN CABINET AT 8". UNLESS NOTED OTHERWISE, EACH DATA BOX IS TO HAVE A SEPARATE CONDUIT ROUTED TO 12" ABOVE ACCESSIBLE CEILING SPACE. VERIFY LOCATIONS PRIOR TO INSTALLATION.
  - 16.603 PROVIDE RECESSED ALARM JUNCTION BOX (WITH VERTICAL RACEWAY) AT +80" WITH 4"x1-1/2" EXTENSION RING (UNLESS NOTED OTHERWISE).
  - 16.604 PROVIDE RECESSED ALARM JUNCTION BOX (WITH VERTICAL RACEWAY) CENTERED 2" ABOVE DOOR FRAME.
  - 16.606 PROVIDE THREE RECESSED ALARM JUNCTION BOXES (WITH ONE VERTICAL RACEWAY). INSTALL (3) BOXES AT +44" AND AT 10' OC WITH 3/4" CONDUIT RINGS BETWEEN BOXES.
  - 16.619 PROVIDE RECESSED ALARM JUNCTION BOX IN CEILING WITH 4"x4-1/2" EXTENSION RING WITH RACEWAY ROUTED TO NEAREST ACCESSIBLE CEILING SPACE.
  - 16.621 PROVIDE RECESSED 4-GANG BACKBOX (WITH ONE VERTICAL RACEWAY) AT +60". COORDINATE EXACT BACKBOX PROVISIONS WITH FIRE ALARM INSTALLER PRIOR TO ROUGH-IN.
  - 16.622 PROVIDE RECESSED 4"x1-1/2" ALARM JUNCTION BOX (WITH VERTICAL RACEWAY) AT +60" WITH 4"x4-1/2" EXTENSION RING AND 4"x4" TWO-GANG DEVICE RING.
  - 16.652 DATA AND PHONE CONDUITS. PROVIDE (3) 3" CONDUITS (WITH PULL WIRE) TO CABLE TRAY. ROUTE CONDUIT TO THE TOP SIDE OF CABLE TRAY WITH THE CONDUIT CONNECTOR AND BUSHING EXTENDING NO MORE THAN 1" OVER CABLE TRAY. PROVIDE (1) 2" CONDUIT WITH PULL WIRE TO TOP SIDE OF THE BOTTOM CHORD OF BAR JOIST. TURN HORIZONTAL AND EXTEND OUT OVER AISLEWAY. STUB CONDUITS 8" BELOW DROP CEILING AND TERMINATE WITH COUPLER AND THEATED BUSHINGS.
  - 16.659 CONDUIT SLEEVE. PROVIDE 2" (UNLESS NOTED OTHERWISE) CONDUIT (WITH PULL WIRE) FROM 18" BELOW CEILING TO 12" ABOVE CEILING AND TERMINATE WITH BUSHINGS.
  - 16.661 DATA AND PHONE CONDUIT. PROVIDE CONDUIT SLEEVE THROUGH WALL AND ROUTE ABOVE BAR JOIST. UNLESS NOTED OTHERWISE, ROUTE CONDUIT TO THE TOP SIDE OF CABLE TRAY WITH THE CONDUIT CONNECTOR AND BUSHING EXTENDING NO MORE THAN 1" OVER CABLE TRAY.

**RETAIL DESIGN COLLABORATIVE**

STIPULATION FOR USE OF THIS DOCUMENT:  
THIS DOCUMENT IS THE PROPERTY OF RETAIL DESIGN COLLABORATIVE. IT IS TO BE USED ONLY FOR THE PROJECT AND SITE SPECIFICALLY IDENTIFIED HEREIN. IT IS NOT TO BE REPRODUCED, COPIED, OR TRANSMITTED IN ANY FORM OR BY ANY MEANS, ELECTRONIC OR MECHANICAL, INCLUDING PHOTOCOPYING, RECORDING, OR BY ANY INFORMATION STORAGE AND RETRIEVAL SYSTEM, WITHOUT THE WRITTEN PERMISSION OF RETAIL DESIGN COLLABORATIVE.

CONSULTANTS  
**Randall C. Hines**  
ARCHITECT  
1000 EAST 10TH AVENUE, SUITE 1000  
DENVER, CO 80202  
PHONE: 303.733.1100  
WWW.RANDALLCHINES.COM

**Walmart**  
LEESBURG, VIRGINIA  
STORE NO. 1804  
11/30/17 PHOTO  
JOB NUMBER: 190 SGL-CL

ISSUE BLOCK  
11/30/17 :OTB

CHECKED BY: SAG  
DRAWN BY: GAR  
FILE NAME: E2.2  
PROTO CYCLE: 04/28/17  
DOCUMENT DATE: 09/13/17

BID SET NOT FOR CONSTRUCTION

ENLARGED POWER PLANS

SHEET: E2.2

Order Plans @ [www.LDILine.com](http://www.LDILine.com)