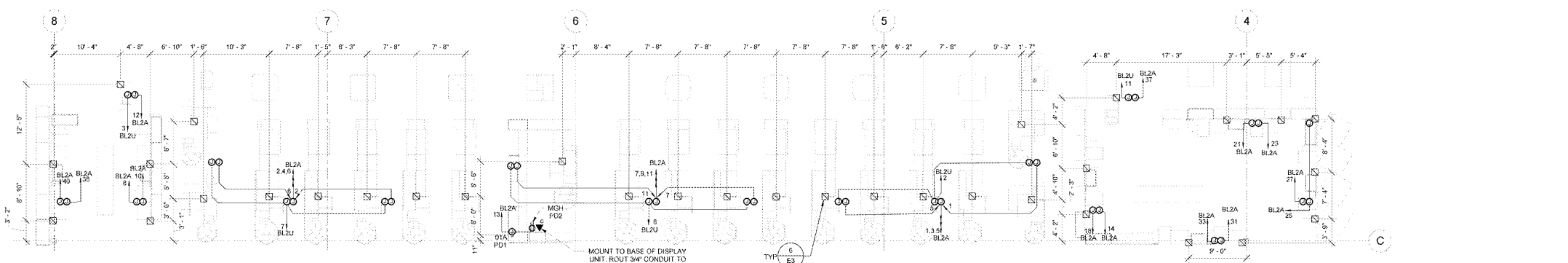


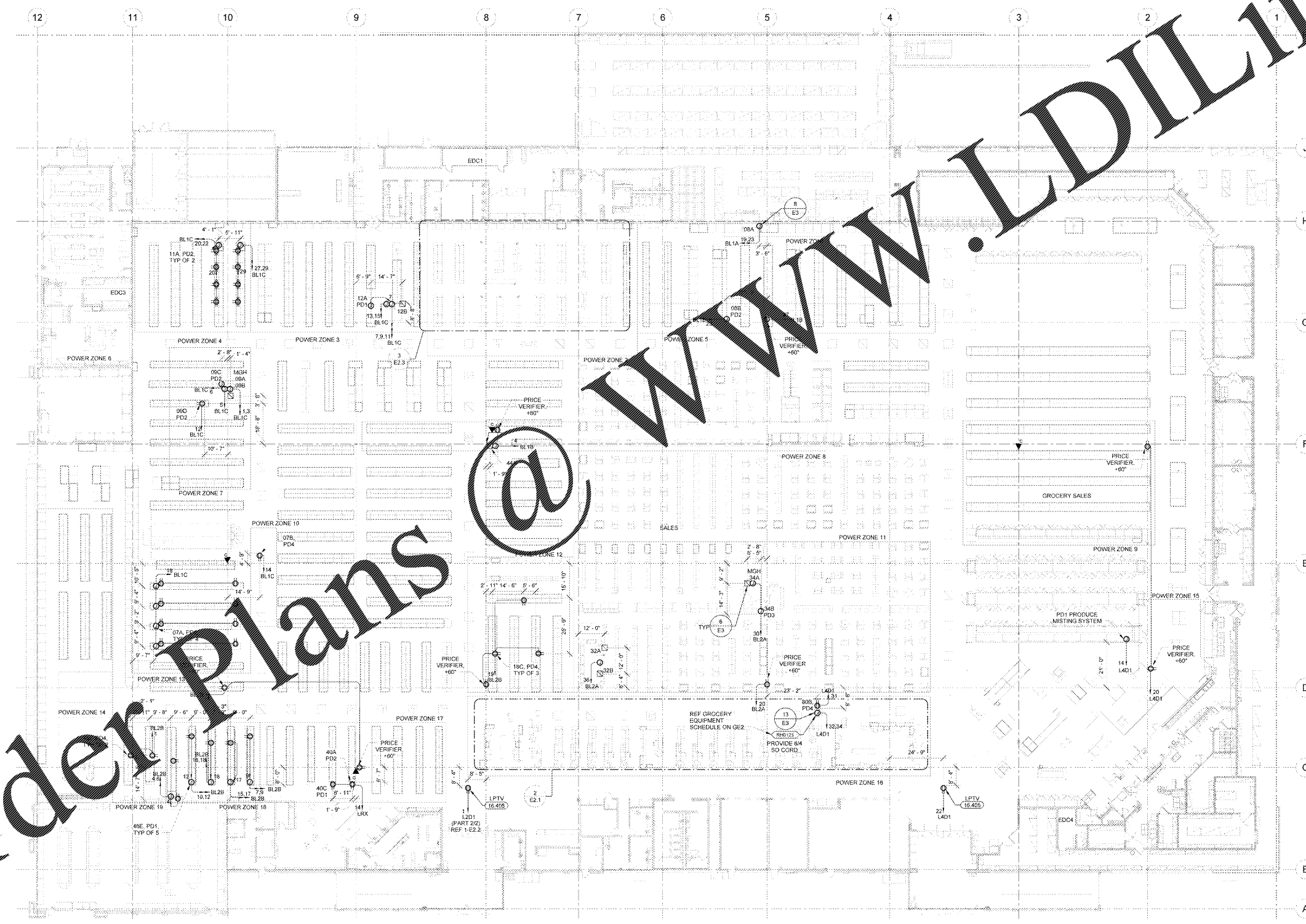
POWER DROP SCHEDULE	
NO	DESCRIPTION
PD1	MOUNT RECEPTACLE(S) ON TOP OF DISPLAY UNITS
PD2	MOUNT RECEPTACLE(S) ON BASE OF DISPLAY UNITS
PD3	PROVIDE DIRECT CONNECTION TO EQUIPMENT
PD4	MOUNT RECEPTACLE AT BAR JOIST AND INSTALL FURNISHED CORD REEL

POWER DROP NOTES	
1.	APPROXIMATELY 40 DAYS PRIOR TO POSSESSION DATE, A REVISION OF THIS PLAN BASED ON THE FINAL MERCHANDISE LAYOUT WILL BE ISSUED TO SHOW FINAL LOCATIONS FOR THE POWER DROPS. THIS REVISION DOES NOT CHANGE THE WORK WILL BE REISSUED. PROVIDE CIRCUITRY TO RACKS AS THEY ARE SET IN ADDITION. FOLLOWING POWER DROP NOTES APPLY:
A.	THERE SHALL BE AN ADDITIONAL CHARGE FOR DROP RELL AND POWER DROPS DEFERRED TO LATER DURING POWER ZONES DEFERRED DURING.
B.	POWER DROPS FED FROM TRACK BUSWAY. INSTALL FURNISHED PLUG-IN UNIT AT A POINT ON TRACK AWAY FROM NEAREST POWER DROPS.
C.	AT CLOSE OF PROJECT THE GENERAL CONTRACTOR AND CONSTRUCTION MANAGER SHALL REVIEW ADDITIONAL OR DELETED POWER DROPS WITH EACH ZONE TO VERIFY ANY ADDITIONAL CHARGES OR CREDITS THAT APPLY DUE TO CHANGES.
D.	ADDING OR SUBTRACTING A POWER DROP TO ANY ZONE WILL RESULT IN A CHARGE OR CREDIT ACCORDING TO SPECIAL CONDITIONS.
2.	PROVIDE JUNCTION BOX AND CIRCUITRY TO NEAREST JOIST ABOVE LOCATION SHOWN ON DRAWING. EXTEND CONDUIT AND CIRCUITRY FROM JUNCTION BOX TO ENDCAP OF DISPLAY RACK (AWAY FROM ACTION ALLEYS).
3.	PROVIDE CONDUIT AND RECEPTACLE(S) AT DISPLAY RACK SHELVING PER POWER DROP SCHEDULE UNLESS NOTED OTHERWISE ON DRAWING. VERIFY EXACT HEIGHT AND LOCATION OF RECEPTACLE(S) WITH STORE PLANNING SET-UP SUPERVISOR PRIOR TO INSTALLATION.

KEYNOTES	
16.405	LPTV MONITOR: MOUNT RECEPTACLE AT BAR JOIST FOR LPTV POWER SUPPLY. POWER SUPPLY PROVIDED BY OTHERS. COORDINATE FINAL RECEPTACLE PLACEMENT WITH MONITOR INSTALLER.



2 CHECKSTAND POWER PLAN
1/8" = 1'-0"



1 POWER DROP PLAN
1" = 20'-0"

Order Plans @

RETAL DESIGN COLLABORATIVE

STIPULATION FOR USE: THIS DRAWING IS THE PROPERTY OF RETAL DESIGN COLLABORATIVE AND IS TO BE USED ONLY FOR THE PROJECT AND SITE SPECIFICALLY IDENTIFIED HEREON. NO PART OF THIS DRAWING IS TO BE REPRODUCED, COPIED, OR TRANSMITTED IN ANY FORM OR BY ANY MEANS, ELECTRONIC OR MECHANICAL, INCLUDING PHOTOCOPYING, RECORDING, OR BY ANY INFORMATION STORAGE AND RETRIEVAL SYSTEM, WITHOUT THE WRITTEN PERMISSION OF RETAL DESIGN COLLABORATIVE.

CONSULTANTS: **Randall C. Hays**
ARCHITECTS
1000 W. 10TH ST., SUITE 100
LEESBURG, VA 22079
PHONE: 703.441.1111
WWW.RCHAYS.COM

Walmart
LEESBURG, VIRGINIA
STORE NO. 1804
JOB NUMBER: 118026 PHOTO: 180 SGL-DL

ISSUE BLOCK	
11/30/17	OTB

CHECKED BY:	SAG
DRAWN BY:	GAR
FILE NAME:	E2.1
PROTO CYCLE:	0428/17
DOCUMENT DATE:	09/13/17

BID SET
NOT FOR
CONSTRUCTION

POWER
DROP PLAN

SHEET:
E2.1