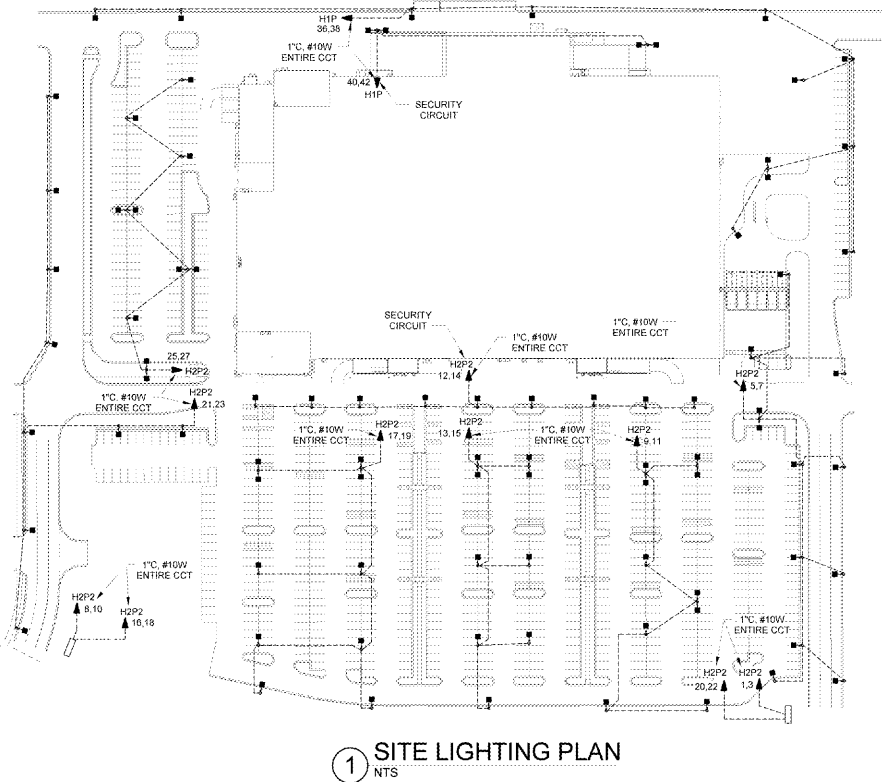
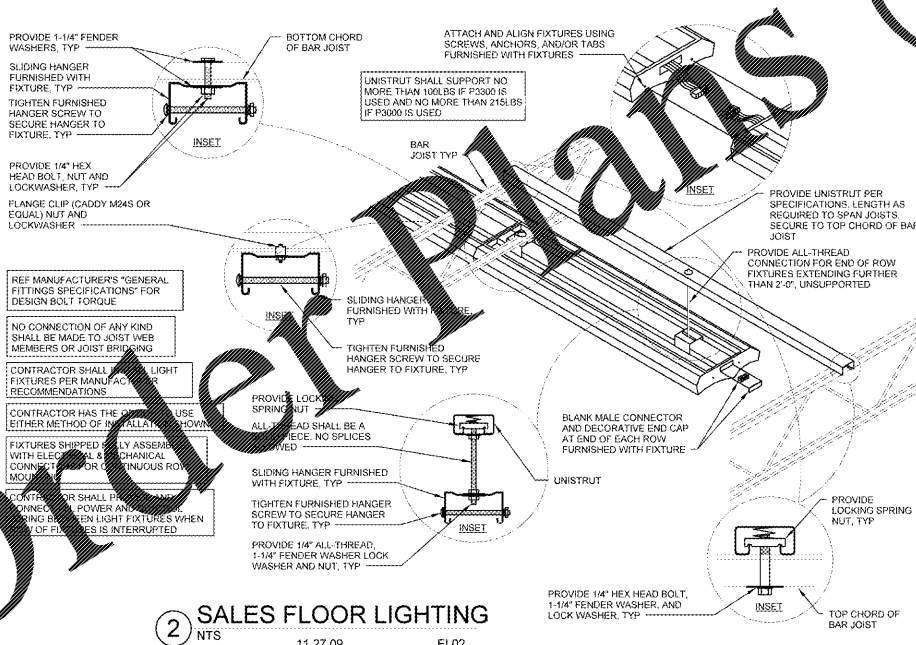
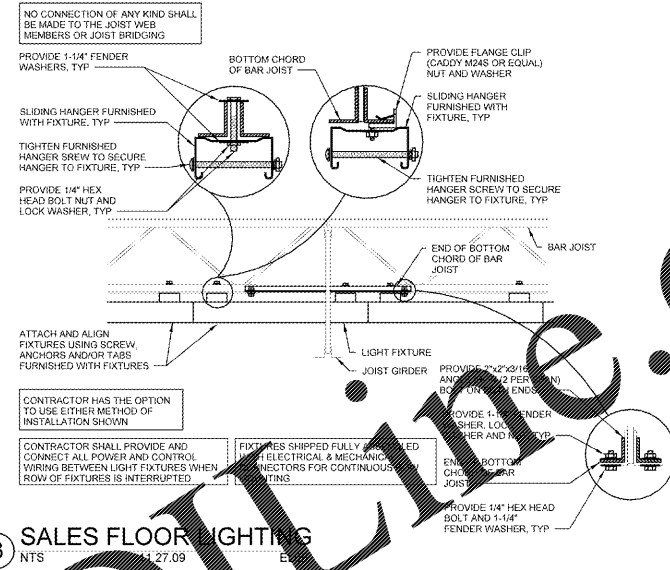
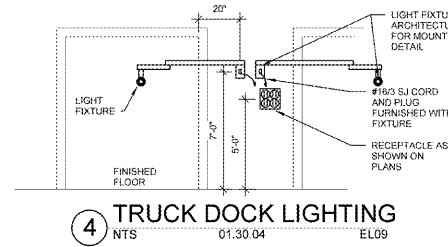


TYPE	DESCRIPTION	VOLTS	WATTS	LAMP (PHILIPS / GE)	QTY	MOUNTING
1	8' STRIP	120/277	110 W	F32T8/TL800PLUSALTO	4	SURFACE
2	4' STRIP	120/277	57 W	F32T8/TL800PLUSALTO	2	SURFACE
30	4' SEALED STRIP W/CORD DARK SKY	120/277	74 W	F32T8/TL800PLUSALTO	2	SURFACE
4L	SUSPENDED STRIP	120/277	142 W	INTEGRAL LED	-	SUSPENDED
5W	SECURITY LIGHT	120/277	70 W	INTEGRAL LED	-	WALL
65	1' x 4' VOLUMETRIC TROFFER	120/277	41 W	INTEGRAL LED	-	RECESSED
85	1' x 4' VOLUMETRIC TROFFER	120/277	41 W	INTEGRAL LED	-	RECESSED
8M	1' x 4' TROFFER	120/277	41 W	INTEGRAL LED	-	RECESSED
9	2' x 2' TROFFER	120/277	40 W	INTEGRAL LED	-	RECESSED
66	2' x 2' VOLUMETRIC TROFFER	120/277	42 W	INTEGRAL LED	-	RECESSED
10	2' x 4' TROFFER	120/277	76 W	F32T8/TL800PLUSALTO	2	RECESSED
11	SECURITY LIGHT	120/277	29 W	INTEGRAL LED	-	WALL
12	DOCK LIGHT	120	70 W	70PAR38IRC/ALFL25120V	1	WALL
13	EXIT SIGN (DOUBLE FACE)	120/277	4 W	INTEGRAL LED	-	STEM / CEILING
15	EXIT SIGN (SINGLE FACE)	120/277	4 W	INTEGRAL LED	-	STEM / CEILING
16	EXIT SIGN (SINGLE FACE)	120/277	4 W	INTEGRAL LED	-	WALL
17	EMERGENCY LIGHT	120/277	3 W	5V, 9W SEALED HALOGEN	2	WALL
18	EMERGENCY LIGHT	120/277	3 W	5V, 20W SEALED HALOGEN	2	WALL
19	EMERGENCY LIGHT	120/277	3 W	5V, 20W SEALED HALOGEN	2	STEM
20L	8' STRIP - STAND ALONE	120/277	66 W	INTEGRAL LED	-	REF DETAILS
21L	8' STRIP - ROW STARTER	120/277	66 W	INTEGRAL LED	-	REF DETAILS
22L	8' STRIP - CONTINUOUS ROW	120/277	66 W	INTEGRAL LED	-	REF DETAILS
24	DOWNLIGHT	120	20 W	70PAR38IRC/ALFL25120V	1	RECESSED
27	EMERGENCY LIGHT - REMOTE HEADS	120/277	3 W	5V, 12W SEALED HALOGEN	2	WALL
27A	EMERGENCY LIGHT - TWO PAIRS OF REMOTE HEADS	120/277	8 W	12V, 12W SEALED HALOGEN	4	WALL
28	WEATHER PROOF EXIT SIGN	120/277	6 W	INTEGRAL LED	-	WALL
36	8" TRACK MOUNTED CYLINDER	120/277	34 W	INTEGRAL LED	-	TRACK
38	SUSPENDED STRIP	120/277	80 W	INTEGRAL LED	-	SUSPENDED
40	8" BLADE STRIP	120/277	80 W	INTEGRAL LED	-	TRACK
42	4' SEALED STRIP	120/277	74 W	F32T8/TL800PLUSALTO	2	SURFACE
42D	4' SEALED STRIP DARK SKY	120/277	74 W	F32T8/TL800PLUSALTO	2	SURFACE
50	ENCLOSED LED LIGHT	120/277	58 W	INTEGRAL LED	-	SURFACE
50B	ENCLOSED LED LIGHT W/ MOTION SENSOR	120/277	58 W	INTEGRAL LED	-	SURFACE
52L	2' x 2' VOLUMETRIC TROFFER	120/277	42 W	INTEGRAL LED	-	RECESSED
68	DOWNLIGHT	120/277	14 W	INTEGRAL LED	-	RECESSED
68E	DOWNLIGHT	277	25 W	INTEGRAL LED	-	RECESSED
76L	8' STRIP - STAND ALONE	120/277	84 W	INTEGRAL LED	-	REF DETAILS
77L	8' STRIP - ROW STARTER	120/277	84 W	INTEGRAL LED	-	REF DETAILS
78L	8' STRIP - CONTINUOUS ROW	120/277	84 W	INTEGRAL LED	-	REF DETAILS

NOTE: ALL FIXTURES AND LAMPS ARE FURNISHED BY THE OWNER FOR INSTALLATION BY THE CONTRACTOR UNLESS NOTED OTHERWISE ON THE DRAWINGS.

NOTE: REFERENCE SPECIFICATIONS FOR VENDORS AND CATALOG NUMBERS NOT LISTED IN FIXTURE SCHEDULE.



KEY

- PARKING LOT LIGHTS
- MONUMENT SIGN

FOR FIXTURE TYPE, QUANTITY AND EXACT LOCATION, REFER TO CIVIL DRAWINGS

THIS SITE LIGHTING LAYOUT IS BASED ON CIVIL PLANS RECEIVED 08/14/17

THE STORE SIGN WILL BE INSTALLED BY OTHERS. MAKE FINAL CONNECTION TO SIGN AFTER INSTALLATION.

NOTE: SIGN INSTALLER SHALL PROVIDE THE REQUIRED STEP-DOWN TRANSFORMER AND DISCONNECT WHEN SIGN VOLTAGE IS LESS THAN 480V.

REDESIGN
RETAIL DESIGN COLLABORATIVE

STIPULATION FOR USE OF THIS DRAWING: THIS DRAWING IS THE PROPERTY OF LDILLINE.COM AND IS TO BE USED ONLY FOR THE PROJECT AND SITE SPECIFICALLY IDENTIFIED HEREIN. IT IS NOT TO BE REPRODUCED, COPIED, OR TRANSMITTED IN ANY FORM OR BY ANY MEANS, ELECTRONIC OR MECHANICAL, INCLUDING PHOTOCOPYING, RECORDING, OR BY ANY INFORMATION STORAGE AND RETRIEVAL SYSTEM, WITHOUT THE WRITTEN PERMISSION OF LDILLINE.COM.

CONSULTANTS
Randall C. Hayes
ARCHITECT
1000 N. GARDEN ST.
LEESBURG, VA 22079
PHONE: 540-441-1111
WWW.RANDALLCHAYES.COM

Walmart
LEESBURG, VIRGINIA
STORE NO. 1804
11807-26 PHOTO
JOB NUMBER 190 SCL-01

ISSUE BLOCK
11/30/17 OTB

CHECKED BY: SAG
DRAWN BY: GAR
FILE NAME: E1.2
PROTO CYCLE: 0428/17
DOCUMENT DATE: 09/13/17

BID SET
NOT FOR
CONSTRUCTION

LIGHTING
DETAILS AND
SITE
LIGHTING

SHEET
E1.2

WWW.LDILLINE.COM