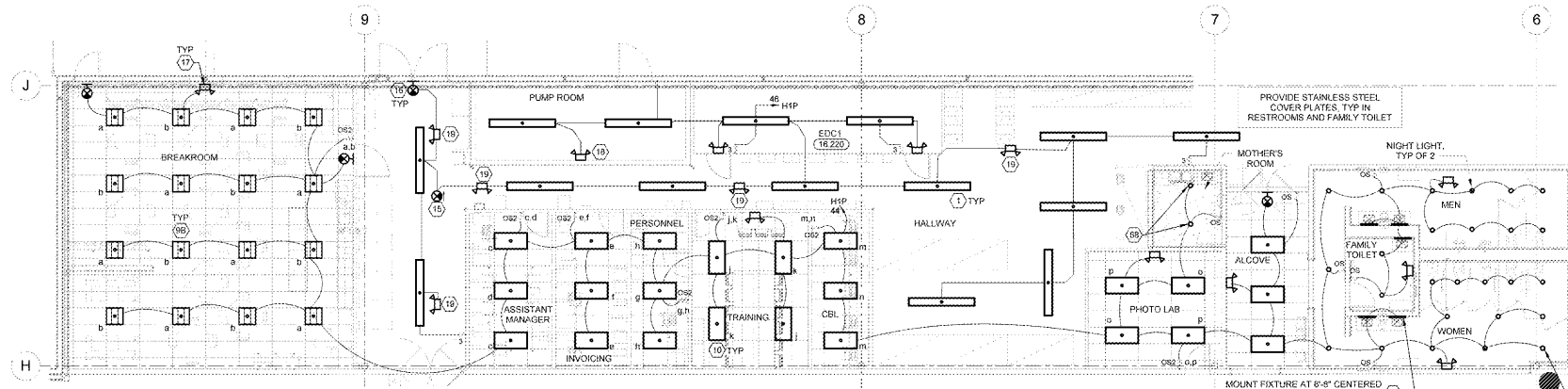
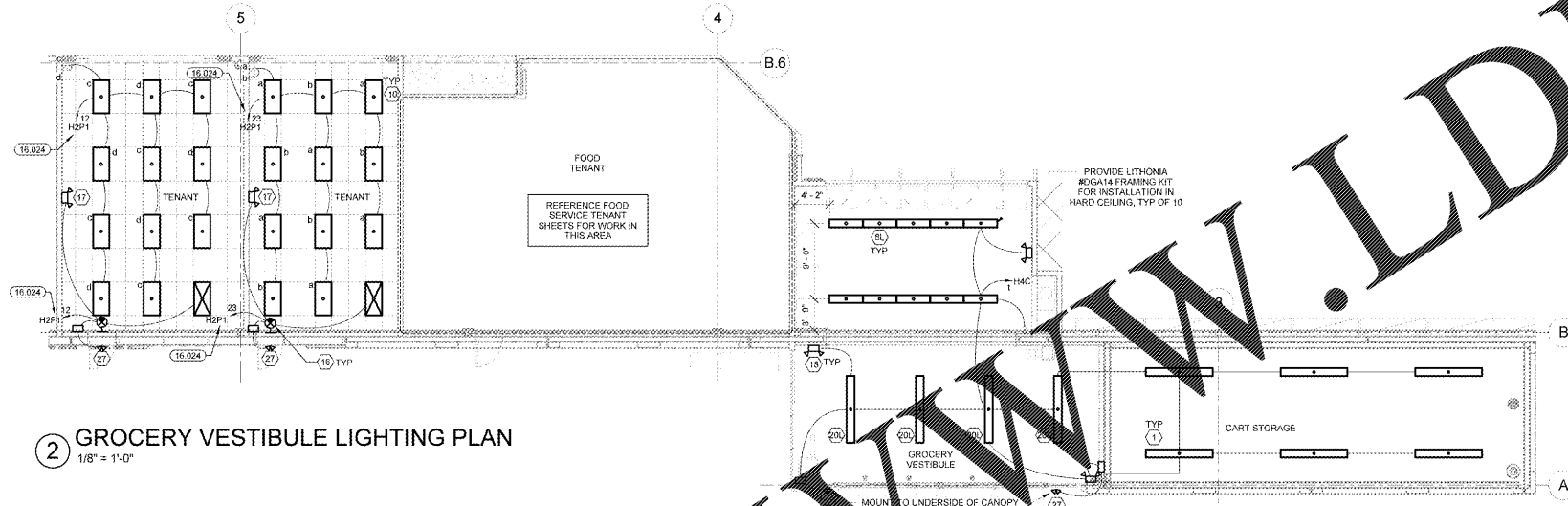


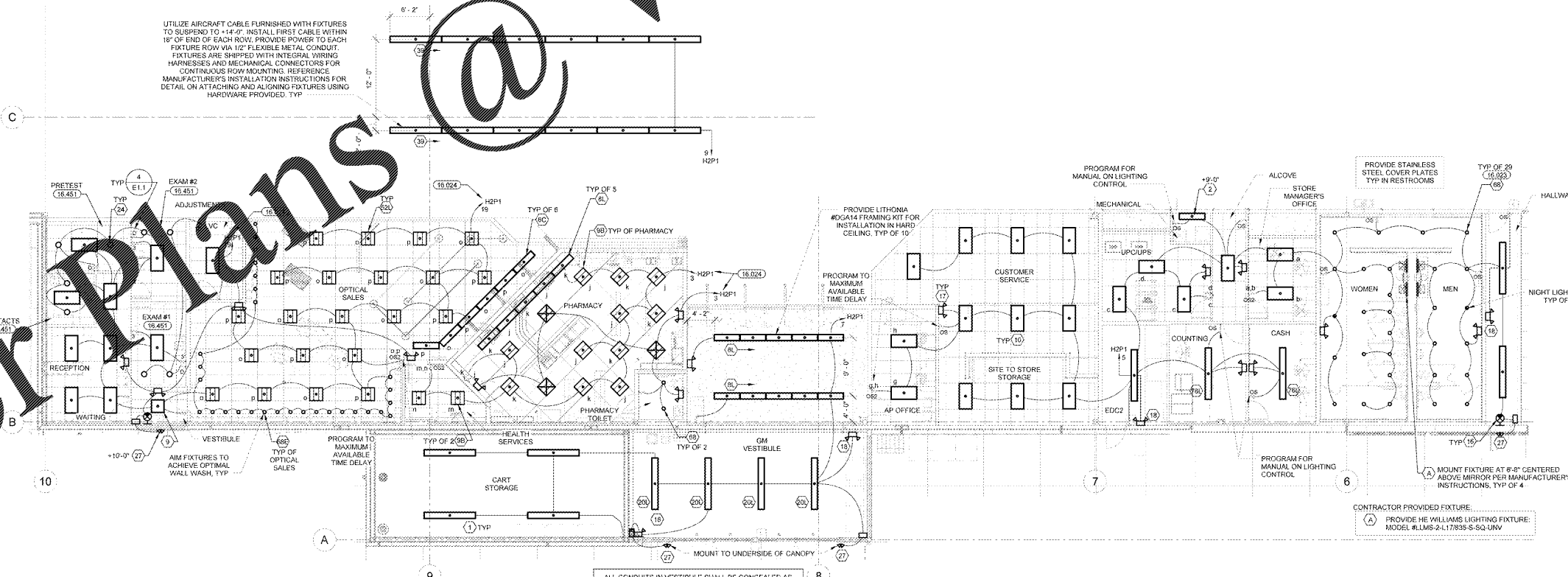
4 VISION CENTER EXAM ROOM ELEVATION
NTS



3 OFFICE LIGHTING PLAN
1/8" = 1'-0"



2 GROCERY VESTIBULE LIGHTING PLAN
1/8" = 1'-0"



1 G.M. VESTIBULE LIGHTING PLAN
1/8" = 1'-0"

KEYNOTES

- 16.023 REFER TO ARCHITECTURAL DETAIL FOR LIGHT FIXTURE INSTALLATION.
- 16.024 CONNECT CIRCUIT TO DUAL TAP CIRCUIT BREAKER INDICATED. CONNECT CIRCUIT CONTAINING NIGHT/EMERGENCY LIGHTING TO UNSWITCHED TERMINATION OF DUAL TAP CIRCUIT BREAKER.
- 16.220 INSTALL PREFABRICATED ELECTRICAL DISTRIBUTION CENTER (EDC) EQUIPMENT AND INTERNAL WIRING AS SHOWN FOR INFORMATION PURPOSES ONLY. THE ENTIRE ASSEMBLY SHALL ARRIVE COMPLETELY PRE-WIRED AND IS CERTIFIED BY A NATIONALLY RECOGNIZED TESTING LABORATORY FOR ITS INTENDED USE.
- 16.451 PROVIDE EMT WITH PROPERLY INSTALLED COMPRESSION OR SET SCREW AND AN INSULATED EQUIPMENT GROUNDING CONDUCTOR FOR ALL RACEWAYS SERVING THIS ROOM TO COMPLY WITH NEC HEALTH CARE FACILITIES.

RETAL DESIGN COLLABORATIVE

CONSULTANTS
Randall C. Hays
 ARCHITECT
 1100 S. GOLF COURSE RD.
 SUITE 200
 LEESBURG, VA 22079
 PHONE: 703-771-1100
 FAX: 703-771-1101
 WWW.RANDALLCHAYS.COM

Walmart
 LEESBURG, VIRGINIA
 STORE NO. 1804
 1100 S. GOLF COURSE RD.
 LEESBURG, VA 22079
 PHOTO: 1100 S. GOLF COURSE RD.

ISSUE BLOCK
 11/30/17 :OTB

CHECKED BY: SAG
 DRAWN BY: GAR
 FILE NAME: E1.1
 PHOTO CYCLE: 0428/17
 DOCUMENT DATE: 09/13/17

BID SET NOT FOR CONSTRUCTION

ENLARGED LIGHTING PLANS

SHEET: **E1.1**

Order Plans @ WWW.LDILine.COM

ALL CONDUITS IN VESTIBULE SHALL BE CONCEALED AS MUCH AS POSSIBLE AND ALL DEVICES ARE TO BE RECESSED WHERE POSSIBLE. ALL CONDUITS IN VESTIBULE SHALL BE CONCEALED AS MUCH AS POSSIBLE AND ALL DEVICES ARE TO BE RECESSED WHERE POSSIBLE.

ALL CONDUITS IN VESTIBULE SHALL BE CONCEALED AS MUCH AS POSSIBLE AND ALL DEVICES ARE TO BE RECESSED WHERE POSSIBLE. ALL CONDUITS IN VESTIBULE SHALL BE CONCEALED AS MUCH AS POSSIBLE AND ALL DEVICES ARE TO BE RECESSED WHERE POSSIBLE.