

KEYNOTES

- 18.021 IN AREAS WITH FENCE, ROUTE CONDUIT DOWN FENCE POST AND MOUNT BOX TO POST. IN AREAS WITHOUT FENCE, MOUNT BOX TO BACK OF SHELVING RACKS.
- 18.024 CONNECT CIRCUIT TO DUAL TAP CIRCUIT BREAKER INDICATED. CONNECT CIRCUIT CONTAINING NIGHT/EMERGENCY LIGHTING TO UNSWITCHED TERMINATION OF DUAL TAP CIRCUIT BREAKER.
- 18.025 LIGHT FIXTURE SHALL BE ALIGNED WITH AND CONNECTED TO BUT CIRCUITED SEPARATELY FROM ADJACENT LIGHT FIXTURE.
- 18.026 PROVIDE UNISTRUT TO MOUNT FIXTURES BETWEEN BAR JOIST.

OCCUPANCY SENSOR NOTES

- 1. OCCUPANCY SENSORS IN MEN'S AND WOMEN'S RESTROOMS SHALL BE PROGRAMMED WITH MAXIMUM AVAILABLE TIME DELAY SETTING.
- 2. ALL OTHER OCCUPANCY SENSORS SHALL BE PROGRAMMED WITH THE MINIMUM AVAILABLE TIME DELAY SETTING UNLESS NOTED OTHERWISE.
- 3. WHERE TWO OCCUPANCY SENSORS ARE SHOWN IN THE SAME SPACE, WIRE FOR 3-WAY SWITCHING.
- 4. ALL SINGLE-POLE OCCUPANCY SENSORS SHALL BE PROGRAMMED WITH AUTOMATIC ON LIGHTING CONTROL MODE UNLESS NOTED OTHERWISE.
- 5. ALL BI-LEVEL OCCUPANCY SENSORS SHALL BE PROGRAMMED WITH AUTOMATIC ON LIGHTING CONTROL FOR 50% OF FIXTURES AND WITH MANUAL ON MODE FOR REMAINING FIXTURES.

GENERAL LIGHTING NOTES

- 1. EXIT SIGN MOUNTING
 - A. WALL FIXTURE: CENTER 12" ABOVE DOOR OPENING.
 - B. CEILING PENDANT FIXTURE: ON CEILING ON BOTTOM OF BAR JOIST OR AT HEIGHT SPECIFIED ON DRAWINGS.
 - C. THE USE OF TROLMER BASED RADIOACTIVE EXIT SIGNAGE SHALL NOT BE ALLOWED.
- 2. EMERGENCY LIGHT INSTALLATION
 - A. WALL FIXTURE: 12" BELOW FINISHED CEILING OR +10'-0" IN AREAS OF EXPOSED STRUCTURE, UNLESS NOTED OTHERWISE.
 - B. PENDANT FIXTURE: BOTTOM CHORD OF BAR JOIST OR AT HEIGHT SPECIFIED ON DRAWINGS.
 - C. REMOTE HEAD FIXTURE: HEADS CEILING ABOVE DOOR OPENING +2'-0" UNLESS NOTED OTHERWISE AND BATTERY PACK MOUNTED ON INTERIOR SIDE OF WALL 12" BELOW FINISHED CEILING OR AT BAR JOIST IN AREAS OF EXPOSED STRUCTURE.
- ELECTRICAL CONNECTION
 - A. REFER TO MANUFACTURER'S WRITING INSTRUCTIONS ALLOW BATTERIES TO CONTINUE TO RUN FOR A MINIMUM OF 168 HOURS BEFORE INITIATING.
 - B. AFTER EMERGENCY LIGHT HAS BEEN POWERED DO NOT TURN OFF LIGHTS DURING PERIODS OF TIME.
- EXIT SIGNS, EMERGENCY LIGHTS AND NIGHT LIGHTS SHALL NOT BE STORED.
- 4. IN AREAS OF OPEN STRUCTURE, MOUNT STROBE FIXTURES TO BOTTOM CHORD OF BAR JOIST, UNLESS NOTED OTHERWISE.
- 5. PROVIDE SEPARATE BOXES FOR GANGED SWITCHES ON SEPARATE BRANCH CIRCUITS.
- 6. FIXTURES DENOTED WITH 'ABJ' ARE TO BE FASTENED ON UNISTRUT CHANNELS MOUNTED TO THE BOTTOM SIDE OF THE TOP CHORD OF BAR JOISTS. LOCATE THE FIXTURES RUNNING PERPENDICULAR TO BAR JOISTS WITHIN BAR JOIST WEBSING SPACES. DO NOT FASTEN FIXTURE OR UNISTRUT CHANNELS TO ROOF DECK.
- 7. ALIGN ENTIRE ROWS OF LIGHTS ON SALES FLOOR TO AVOID CONFLICTS WITH STRUCTURAL BRIDGINGS. THE ENTIRE ROW SHALL NOT DEVIATE MORE THAN 6" IN EITHER DIRECTION FROM DIMENSION NOTED ON DRAWING.

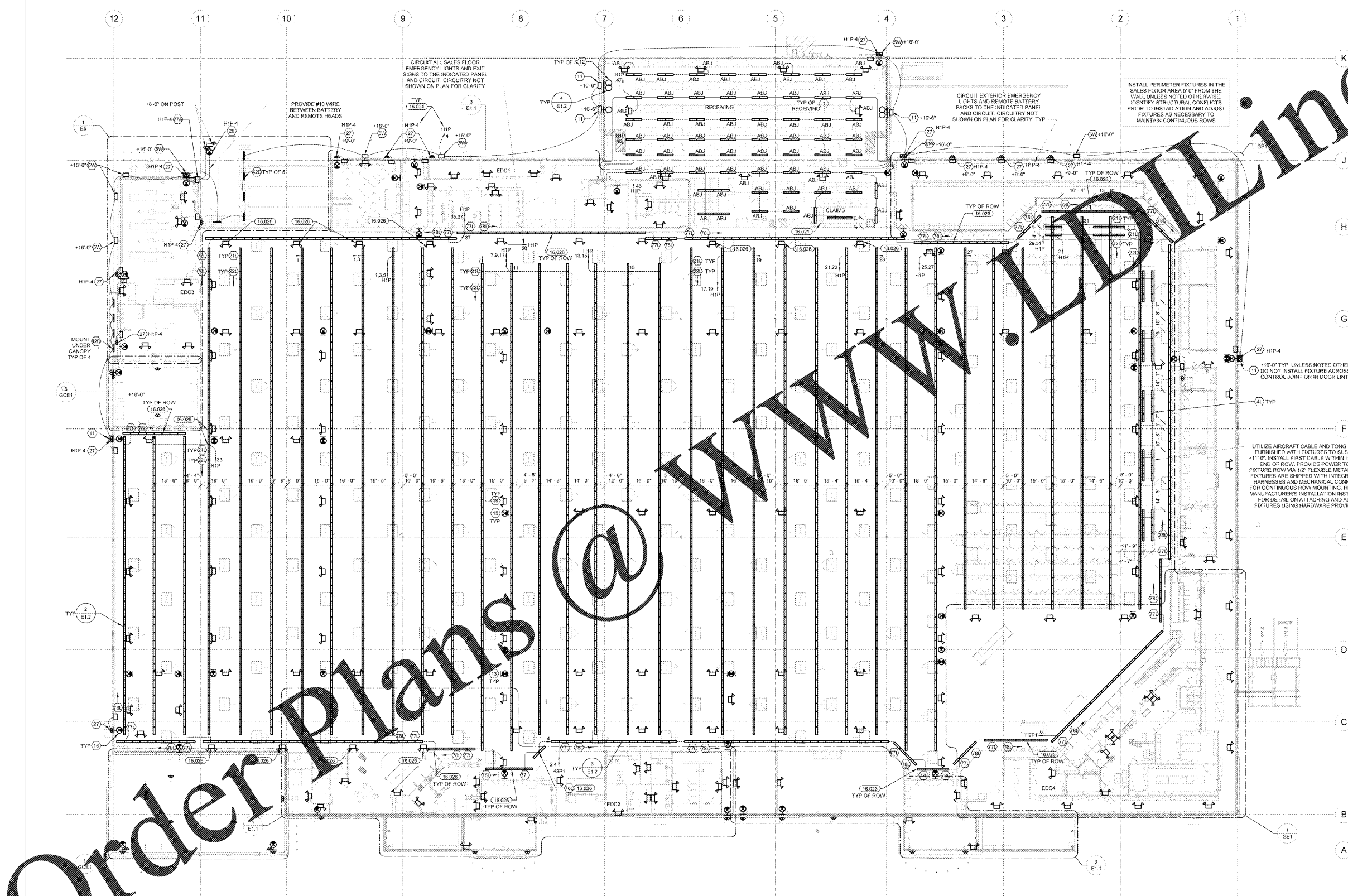


ISSUE BLOCK	11/30/17 : OTB
CHECKED BY:	SAG
DRAWN BY:	GAR
FILE NAME:	E1
PROTO CYCLE:	04/28/17
DOCUMENT DATE:	09/13/17

BID SET NOT FOR CONSTRUCTION

LIGHTING PLAN

E1



Order Plans @ WWW.ONLINE.COM

1 LIGHTING PLAN
1" = 20'-0"