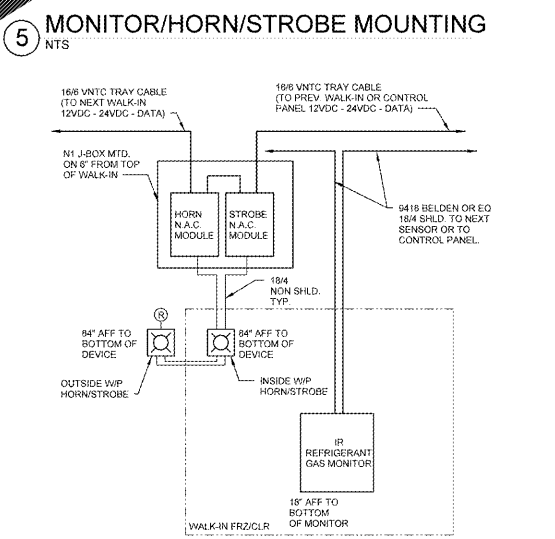
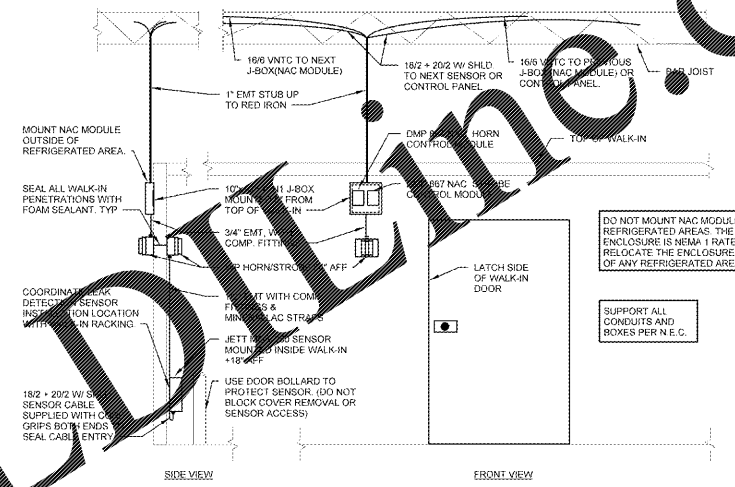
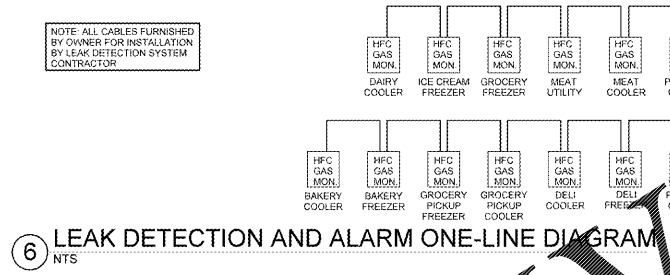
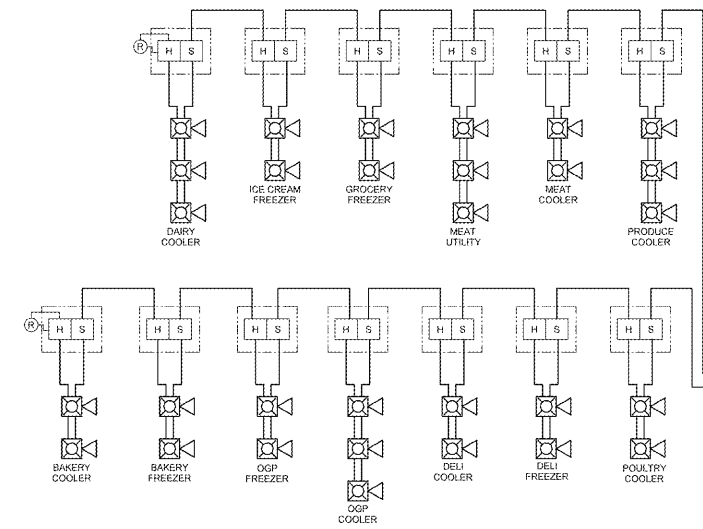


LEAK ALARM CONTROL SEQUENCE OF OPERATIONS	
REFRIGERANT LEAK CONTROL SEQUENCE OF OPERATION FOR COOLERS AND FREEZERS	
THE LEAK DETECTION CONTROL MODULES, UPON REGISTERING A CONCENTRATION THAT IS ONE-HALF OF THE IDLH OR AIN ON THE DEL, WHICHEVER IS LESS, SHALL:	
1. ACTIVATE VISUAL AND AUDIBLE ALARMS FOR THE ZONE INDICATING THE LEAK.	
2. ENABLE AN AUTOMATIC SHUTDOWN OF THE LLSV AND EEPR TO ISOLATE THE REFRIGERANT FLOW IN THE ALARM.	
3. SEND AN ALARM SIGNAL TO THE FIRE ALARM PANEL.	
AUDIBLE / VISUAL DEVICES INSIDE COOLERS AND FREEZERS SHALL BE INSTALLED IN WEATHERPROOF JUNCTION BOXES, REFERENCE LEAK DETECTION INSTALLATION DETAIL.	
AUDIBLE / VISUAL DEVICES SHALL ANNUNCIATE AT A SOUND PRESSURE LEVEL THAT IS A MINIMUM OF 15 DBA ABOVE THE AMBIENT NOISE LEVEL.	
LEGEND	
DEL: OCCUPATIONAL EXPOSURE LIMIT	IDLH: IMMEDIATELY DANGEROUS TO LIFE OR HEALTH
LLSV: LIQUID LINE SOLENOID VALVE	EEPR: ELECTRONIC EVAPORATOR PRESSURE REGULATOR

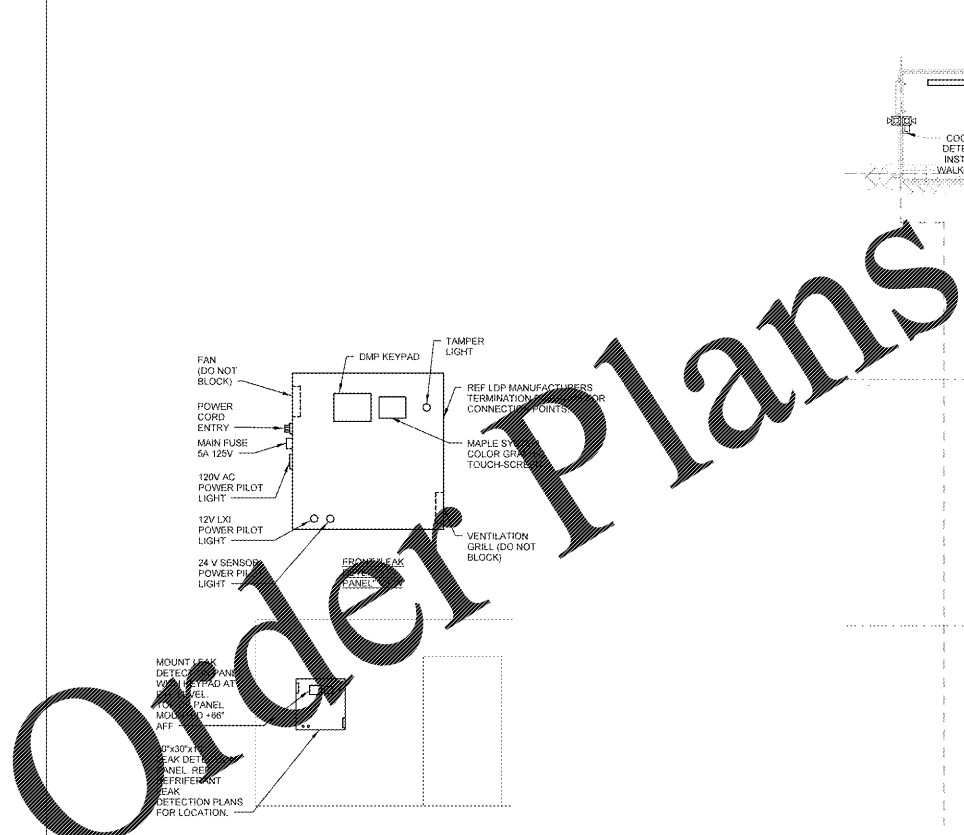
LEAK DETECTION SYMBOLS	
	AUDIOVISUAL ALARM
	END OF LINE RESISTOR-RELAY MODULE
	LEAK DETECTION PANEL
	LEAK DETECTION SENSOR
	NOTIFICATION APPLIANCE CIRCUIT MODULE (HORN)
	NOTIFICATION APPLIANCE CIRCUIT MODULE (STROBE)



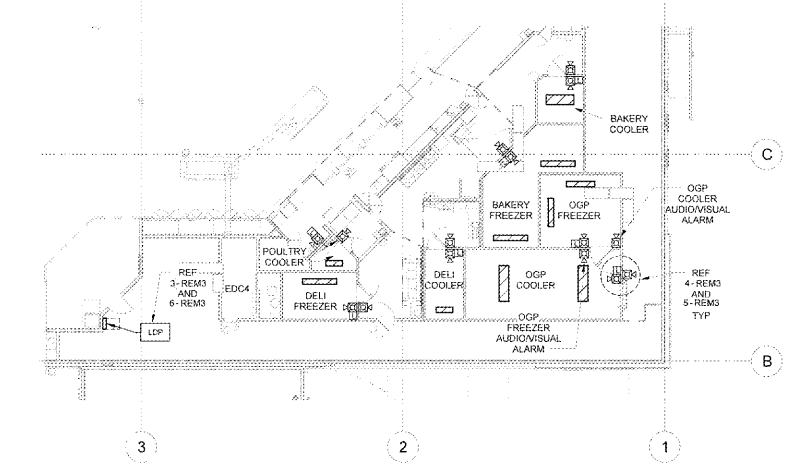
6 LEAK DETECTION AND ALARM ONE-LINE DIAGRAM  
NTS

5 MONITOR/HORN/STROBE MOUNTING  
NTS

4 REFRIGERATION LEAK DETECTION SYSTEM WIRING DIAGRAM  
NTS



2 REAR REFRIGERATION LEAK DETECTION PLAN  
1/16" = 1'-0"



1 FRONT REFRIGERATION LEAK DETECTION PLAN  
1/16" = 1'-0"

3 LEAK DETECTOR PANEL INSTALLATION  
NTS



ISSUE BLOCK
11/30/17 : OTB

CHECKED BY:	WRK
DRAWN BY:	ROP
FILE NAME:	1909EM3
PROTO CYCLE:	0428/17
DOCUMENT DATE:	09/13/17

**BID SET NOT FOR CONSTRUCTION**

REFRIG LEAK DETECTION PLAN AND DETAILS

SHEET: REM3