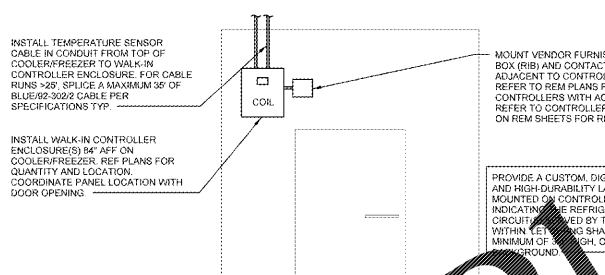
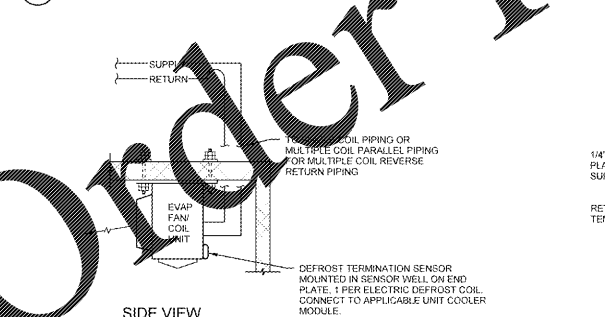


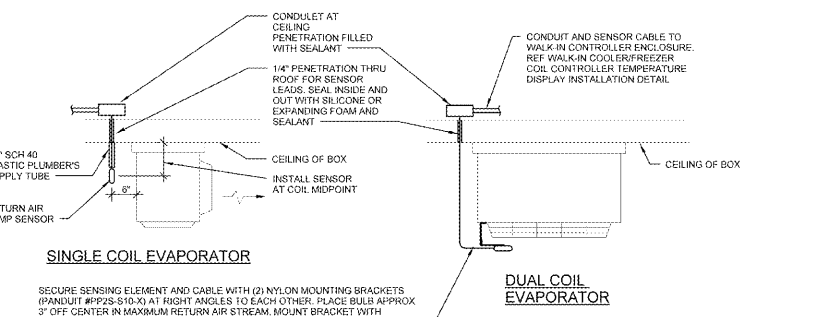
⑤ ONE-LINE DIAGRAM OF REFRIGERATION BAS
NTS



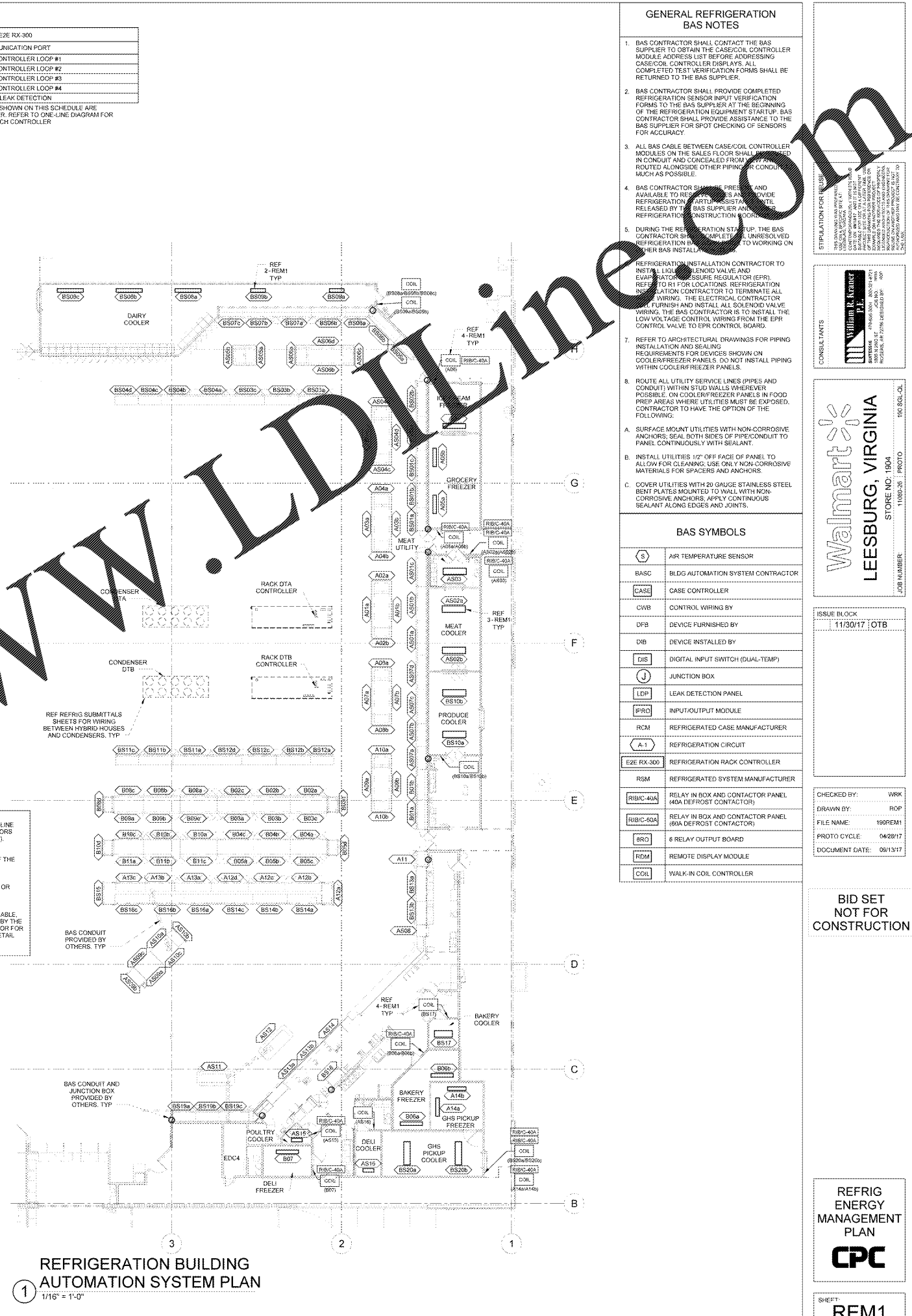
④ WALK-IN COOLER/FREEZER COIL CONTROLLER TEMPERATURE DISPLAY INSTALLATION
NTS



③ ELECTRIC DEFROST TERMINATION TEMPERATURE SENSOR LOCATION
NTS



② TEMPERATURE SENSOR LOCATION
NTS



① REFRIGERATION BUILDING AUTOMATION SYSTEM PLAN
1/16" = 1'-0"

GENERAL REFRIGERATION BAS NOTES

- BAS CONTRACTOR SHALL CONTACT THE BAS SUPPLIER TO OBTAIN THE CASE/COIL CONTROLLER MODULE ADDRESS LIST BEFORE ADDRESSING CASE/COIL CONTROLLER DISPLAYS. ALL COMPLETED TEST VERIFICATION FORMS SHALL BE RETURNED TO THE BAS SUPPLIER.
- BAS CONTRACTOR SHALL PROVIDE COMPLETED REFRIGERATION SENSOR INPUT VERIFICATION FORMS TO THE BAS SUPPLIER AT THE BEGINNING OF THE REFRIGERATION EQUIPMENT STARTUP. BAS CONTRACTOR SHALL PROVIDE ASSISTANCE TO THE BAS SUPPLIER FOR SPOT CHECKING OF SENSORS FOR ACCURACY.
- ALL BAS CABLE BETWEEN CASE/COIL CONTROLLER MODULES ON THE SALES FLOOR SHALL BE INSTALLED IN CONDUIT AND CONCEALED FROM VIEW. BAS CONTRACTOR SHALL PROVIDE ASSISTANCE TO THE BAS SUPPLIER FOR SPOT CHECKING OF SENSORS FOR ACCURACY.
- BAS CONTRACTOR SHALL PROVIDE AND MAKE AVAILABLE TO THE BAS SUPPLIER ALL REFRIGERATION PARTS ASSISTANCE MATERIAL RELEASED BY THE BAS SUPPLIER AT THE BEGINNING OF REFRIGERATION CONSTRUCTION.
- DURING THE REFRIGERATION STARTUP, THE BAS CONTRACTOR SHALL COMPLETE UNRESOLVED REFRIGERATION ISSUES TO WORKING ORDER BEFORE BAS INSTALL.

REFRIGERATION INSTALLATION CONTRACTOR TO INSTALL LDRS, BLEND VALVE AND EVAPORATOR PRESSURE REGULATOR (EPR). REFER TO R1 FOR LOCATIONS. REFRIGERATION INSTALLATION CONTRACTOR TO TERMINATE ALL REFRIGERATION PIPING AND INSTALL ALL SOLENOID VALVE WIRING. THE BAS CONTRACTOR IS TO INSTALL THE LOW VOLTAGE CONTROL WIRING FROM THE EPR CONTROL VALVE TO EPR CONTROL BOARD.

- REFER TO ARCHITECTURAL DRAWINGS FOR PIPING INSTALLATION AND SEALING REQUIREMENTS FOR DEVICES SHOWN ON COOLER/FREEZER PANELS. DO NOT INSTALL PIPING WITHIN COOLER/FREEZER PANELS.
- ROUTE ALL UTILITY SERVICE LINES (PPES AND CONDUIT) WITHIN STUD WALLS WHEREVER POSSIBLE. ON COOLER/FREEZER PANELS IN FOOD PREP AREAS WHERE UTILITIES MUST BE EXPOSED, CONTRACTOR TO HAVE THE OPTION OF THE FOLLOWING:
 - SURFACE MOUNT UTILITIES WITH NON-CORROSIVE ANCHORS, SEAL BOTH SIDES OF PIPING/CONDUIT TO PANEL CONTINUOUSLY WITH SEALANT.
 - INSTALL UTILITIES 1/2" OFF FACE OF PANEL TO ALLOW FOR CLEANING. USE ONLY NON-CORROSIVE MATERIALS FOR SPACERS AND ANCHORS.
 - COVER UTILITIES WITH 20 GAUGE STAINLESS STEEL BENT PLATES MOUNTED TO WALL WITH NON-CORROSIVE ANCHORS. APPLY CONTINUOUS SEALANT ALONG EDGES AND JOINTS.

BAS SYMBOLS

(S)	AIR TEMPERATURE SENSOR
BASC	BLDG AUTOMATION SYSTEM CONTRACTOR
CASE	CASE CONTROLLER
CWB	CONTROL WIRING BY
DFB	DEVICE FURNISHED BY
DIB	DEVICE INSTALLED BY
DIS	DIGITAL INPUT SWITCH (DUAL-TEMP)
J	JUNCTION BOX
LDP	LEAK DETECTION PANEL
PRO	INPUT/OUTPUT MODULE
RCM	REFRIGERATED CASE MANUFACTURER
A.1	REFRIGERATION CIRCUIT
EZE RX-300	REFRIGERATION RACK CONTROLLER
RSM	REFRIGERATED SYSTEM MANUFACTURER
RIBC-40A	RELAY IN BOX AND CONTACTOR PANEL (40A DEFROST CONTACTOR)
RIBC-60A	RELAY IN BOX AND CONTACTOR PANEL (60A DEFROST CONTACTOR)
BRD	8 RELAY OUTPUT BOARD
RDM	REMOTE DISPLAY MODULE
COL	WALK-IN COIL CONTROLLER

BID SET NOT FOR CONSTRUCTION

CHECKED BY: WRK
 DRAWN BY: ROP
 FILE NAME: 1909REM1
 PROTO CYCLE: 04/28/17
 DOCUMENT DATE: 09/13/17

REFRIG ENERGY MANAGEMENT PLAN
CPC

SHEET: **REM1**

Order Plans @

WWW.LDOnline.com

STIPULATION FOR USE OF THIS DOCUMENT:
 THIS DOCUMENT IS THE PROPERTY OF LEESBURG, VIRGINIA. IT IS TO BE USED ONLY FOR THE PROJECT AND SITE SPECIFICALLY IDENTIFIED HEREIN. IT IS NOT TO BE REPRODUCED, COPIED, OR TRANSMITTED IN ANY FORM OR BY ANY MEANS, ELECTRONIC OR MECHANICAL, INCLUDING PHOTOCOPYING, RECORDING, OR BY ANY INFORMATION STORAGE AND RETRIEVAL SYSTEM, WITHOUT THE WRITTEN PERMISSION OF LEESBURG, VIRGINIA.

CONSULTANTS
William R. Krumm
 P.L.L.C.
 11000 W. STATE ST. SUITE 200
 LEESBURG, VA 22042
 PHONE: 703.771.1100
 FAX: 703.771.1101
 WWW.WRKLAW.COM

Walmart
 LEESBURG, VIRGINIA
 STORE NO.: 1904
 11000 W. STATE ST. SUITE 200
 LEESBURG, VA 22042
 PHONE: 703.771.1100
 FAX: 703.771.1101
 WWW.WRKLAW.COM