

- GENERAL BAS NOTES**
- TEMPERATURE AND CO2 SENSOR MOUNTING: PROVIDE 1/2" CONDUIT AND INSTALL BAS CABLE FROM SENSOR TO CONTROL MODULE. MOUNT SENSOR ON BOX. ALL SENSORS TO BE MOUNTED 4" UNLESS NOTED OTHERWISE. SENSORS ON SALES FLOOR SHALL BE MOUNTED ON THE BACK SIDE OF COLUMN. DO NOT INSTALL SENSORS IN HVAC SUPPLY AIR PATH OR IN DIRECT SUNLIGHT. REF MECHANICAL DRAWINGS FOR EXACT LOCATIONS.
 - A. GYPSUM BOARD WALLS: PROVIDE A 4" SQUARE RECESSED BOX WITH A SINGLE GANG PLASTER RING FLUSH MOUNTED VERTICALLY.
 - B. BLOCK WALLS AND COLUMNS: PROVIDE 2" X 2" BOX SURFACE MOUNTED VERTICALLY.
 - C. INSULATE BEHIND SENSORS MOUNTED ON EXTERIOR WALL WITH 1/2" POLYURETHANE SPACER.
 - BAS CONTRACTOR SHALL INSTALL MASTER CONTROLLER(S).
 - UNLESS NOTED OTHERWISE BAS EQUIPMENT IS FURNISHED AS PART OF THE JOB.
 - TERMINATIONS SHALL BE IN ACCORDANCE WITH BAS SUPPLIER'S INSTRUCTIONS. NO FOIL OR UNUSED WIRES SHALL BE EXPOSED AFTER APPLICATION OF HEAT SHRINK.
 - CABLE BACK CONTRACTOR SHALL PROVIDE CABLE ACCORDING TO DRAWINGS. NO DEVIATION FROM DRAWINGS WILL BE ACCEPTED UNLESS SHOWN ON THE OPPOSITE END. TERMINATES: CABLE SHALL BE INSTALLED IN CONDUIT OR CABLE TRAY IN FINISHED AREAS OF BUILDING.
 - MINOR CHANGES IN MATERIALS OR TERMINATION POINTS SHALL NOT INCREASE CONTRACT COST.
 - ROUTE BAS CONDUITS IN SALES AREA CONCEALED (IN WALLS, PIPE RACKS AND/OR CHASES). PROVIDE A TRANSITION FROM THE PVC UNLESS AS BAS CONDUIT TO GYM FLEX. BAS CABLES SHALL BE RUN IN CONDUIT FULL LENGTH BENEATH REFRIGERATED CASES. BAS CABLES AT BAR JOIST LEVEL IN THE STOCKROOM CAN BE EXPOSED.
 - DIMMING CONTROL WIRING MUST TERMINATE IN HOME RUN FIXTURES ONLY, AS SHOWN ON BAS PLANS. PER THE MANUFACTURER'S INSTALLATION INSTRUCTIONS. DO NOT MODIFY THE LISTED FIXTURE'S WIRING HARNESS OR TERMINATE CONTROL WIRING IN THE ADJACENT FIXTURES.
 - BAS CONTRACTOR SHALL PROVIDE ASSISTANCE TO THE BAS SUPPLIER ON PERFORMING EQUIPMENT TESTS ON POWER SWITCHING PANELS AS NECESSARY.
 - BAS CONTRACTOR SHALL CALIBRATE ALL CO2 SENSORS PER THE SENSOR MANUFACTURER'S INSTRUCTIONS IMMEDIATELY PRIOR TO LEAVING THE JOB.
 - DO NOT INSTALL EQUIPMENT OR CONDUITS DIRECTLY UNDER SKYLIGHT WELLS UNLESS INDICATED OTHERWISE ON PLANS.
 - WHERE GROUPED CONDUITS ARE INSTALLED WITHIN THE JOIST SPACE, COORDINATE WITH SPRINKLER CONTRACTOR PRIOR TO INSTALLATION IN ORDER TO MAINTAIN REQUIRED CLEARANCES FROM SPRINKLERS.

MULTIFLEXBRAO #1 - EDC1

INPUTS		OUTPUTS	
U1	SALES LIGHTS DIM FEEDBACK	U1	OPEN
U2	SALES LIGHTS DIM FEEDBACK	U2	OPEN
U3	PERIMETER LIGHTS DIM FEEDBACK	U3	OPEN
U4	PERIMETER LIGHTS DIM FEEDBACK	U4	OPEN
U5	INTERIOR LIGHTS OVR	U5	OPEN
U6	EXTERIOR LIGHTS OVR	U6	OPEN
U7	PHASE LOSS MONITOR	U7	OPEN
U8	QC BREAKER	U8	OPEN
U9	SPO ALARM (HPI)	A1	LDM-1
U10	LOAD SHED HVAC	A2	LDM-2
U11	LOAD SHED LIGHTS	A3	LDM-3
U12	AMS (MAIN) ALARM STATUS	A4	LDM-4
U13	AMS (GEN) ALARM STATUS		
U14	SALES ALS 5000		
U15	SITE EMERGENCY SD		
U16	OPEN		

INPUT/OUTPUT LEGEND:
U# = UNIVERSAL
A# = ANALOG
D# = DIGITAL

MULTIFLEXBRAO #2 - EDC2

INPUTS		OUTPUTS	
U1	EMERGENCY HVAC SHUTDOWN	U1	OPEN
U2	OPEN	U2	OPEN
U3	OPEN	U3	OPEN
U4	SPO ALARM (H2P2)	U4	OPEN
U5	OPEN	U5	OPEN
U6	OPEN	U6	OPEN
U7	SWITCH VRH1	U7	OPEN
U8	SWITCH VRH2	U8	OPEN
A1	OPEN	A1	OPEN
A2	OPEN	A2	OPEN
A3	OPEN	A3	OPEN
A4	OPEN	A4	OPEN

INPUT/OUTPUT LEGEND:
U# = UNIVERSAL
A# = ANALOG
D# = DIGITAL

MULTIFLEXBRAO #1 - EDC1

INPUTS		OUTPUTS	
U1	SALES LIGHTS DIM FEEDBACK	U1	OPEN
U2	SALES LIGHTS DIM FEEDBACK	U2	OPEN
U3	PERIMETER LIGHTS DIM FEEDBACK	U3	OPEN
U4	PERIMETER LIGHTS DIM FEEDBACK	U4	OPEN
U5	INTERIOR LIGHTS OVR	U5	OPEN
U6	EXTERIOR LIGHTS OVR	U6	OPEN
U7	PHASE LOSS MONITOR	U7	OPEN
U8	QC BREAKER	U8	OPEN
U9	SPO ALARM (HPI)	A1	LDM-1
U10	LOAD SHED HVAC	A2	LDM-2
U11	LOAD SHED LIGHTS	A3	LDM-3
U12	AMS (MAIN) ALARM STATUS	A4	LDM-4
U13	AMS (GEN) ALARM STATUS		
U14	SALES ALS 5000		
U15	SITE EMERGENCY SD		
U16	OPEN		

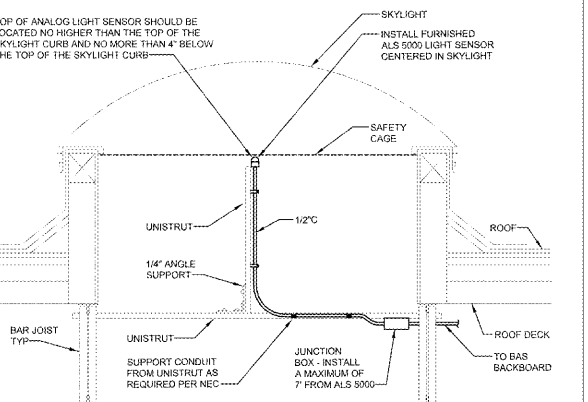
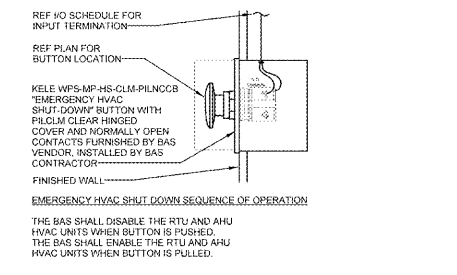
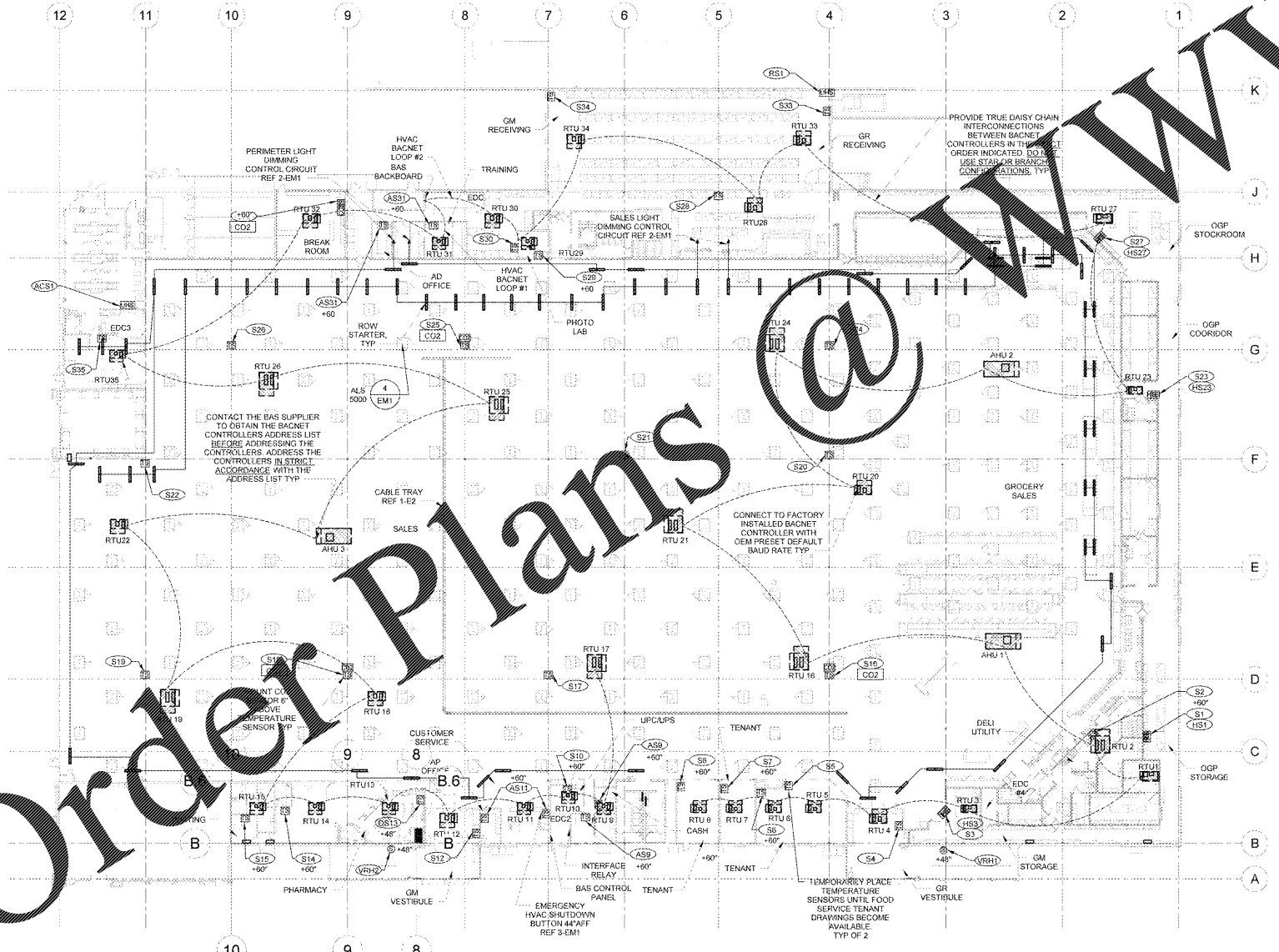
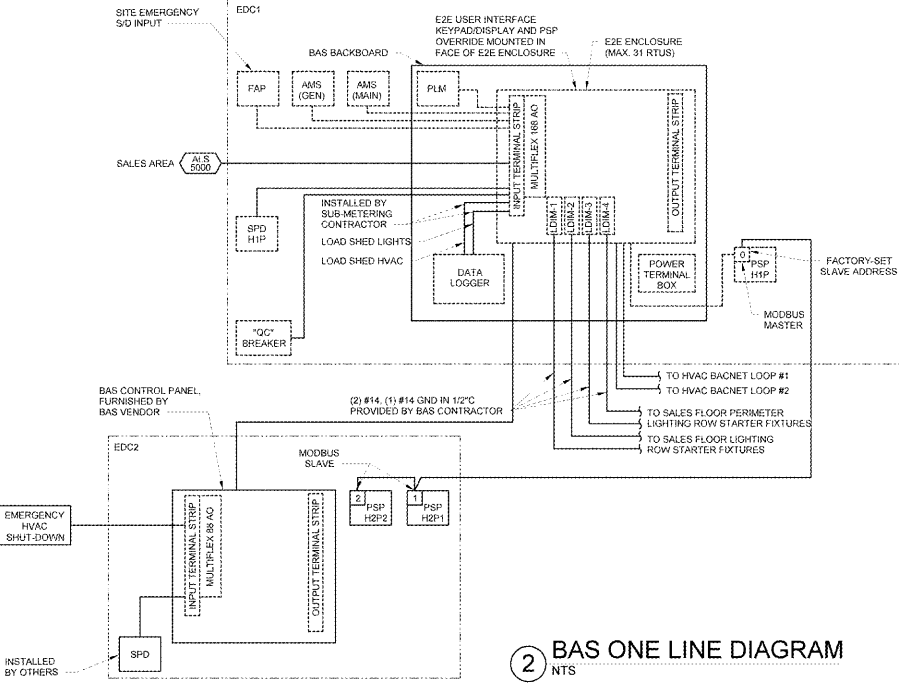
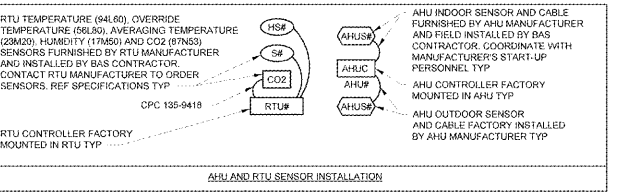
INPUT/OUTPUT LEGEND:
U# = UNIVERSAL
A# = ANALOG
D# = DIGITAL

----- INSTALLED BY EDC MANUFACTURER
----- FIELD INSTALLED

ENSURE CONNECTION OF BUILDING AND REFRIGERATION CONTROLLERS VIA ETHERNET TO OWNER LAN.

WIRE LEGEND
1. CPC 135-2832 (23-2 TWISTED PAIR)
2. CPC 135-9418 (18-4)

NOTES
1. ALL CABLE CPC 135-2832 UNLESS NOTED OTHERWISE
2. ALL BAS CABLES FURNISHED BY BAS SUPPLIER.



Order Plans @ www.LDLine.com