

**CAPTIVE AIR**

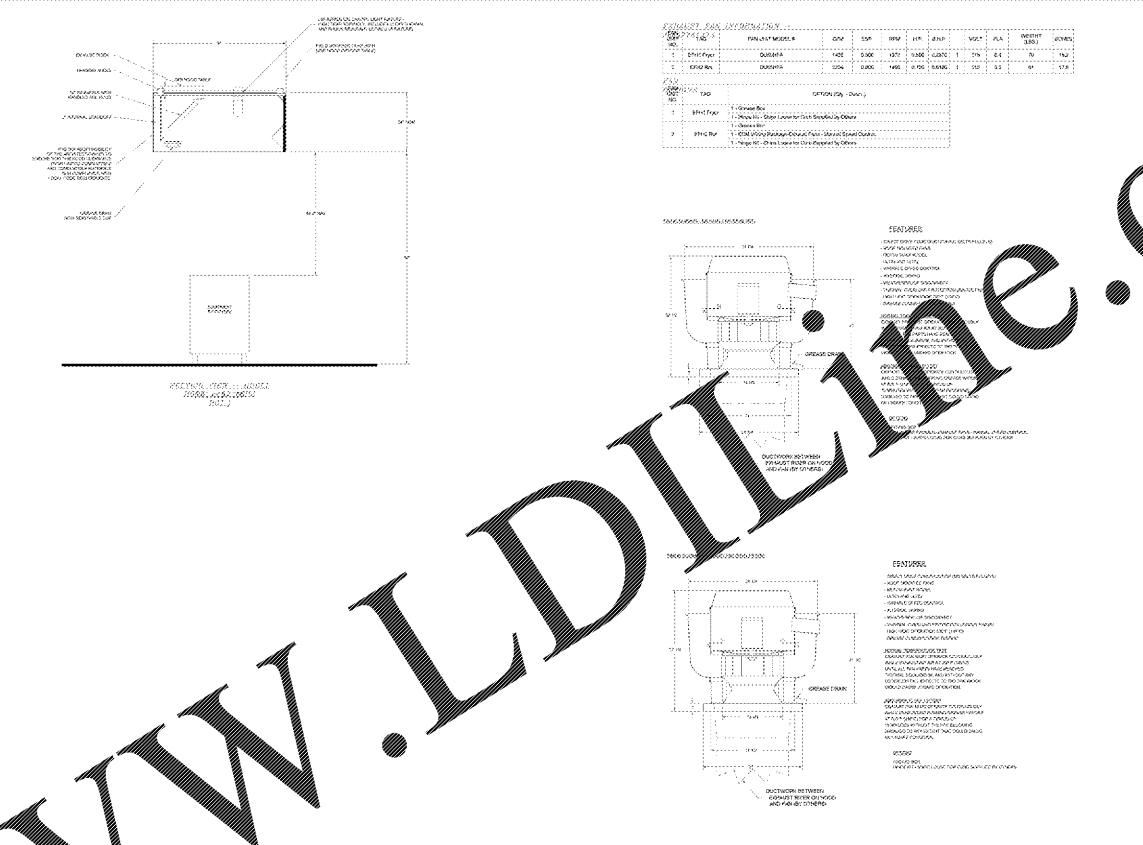
WAL MART PROTO 190 PR 8-2016

2/14/17

2/14/17

GM-40

MASTER DRAWING



**CAPTIVE AIR**

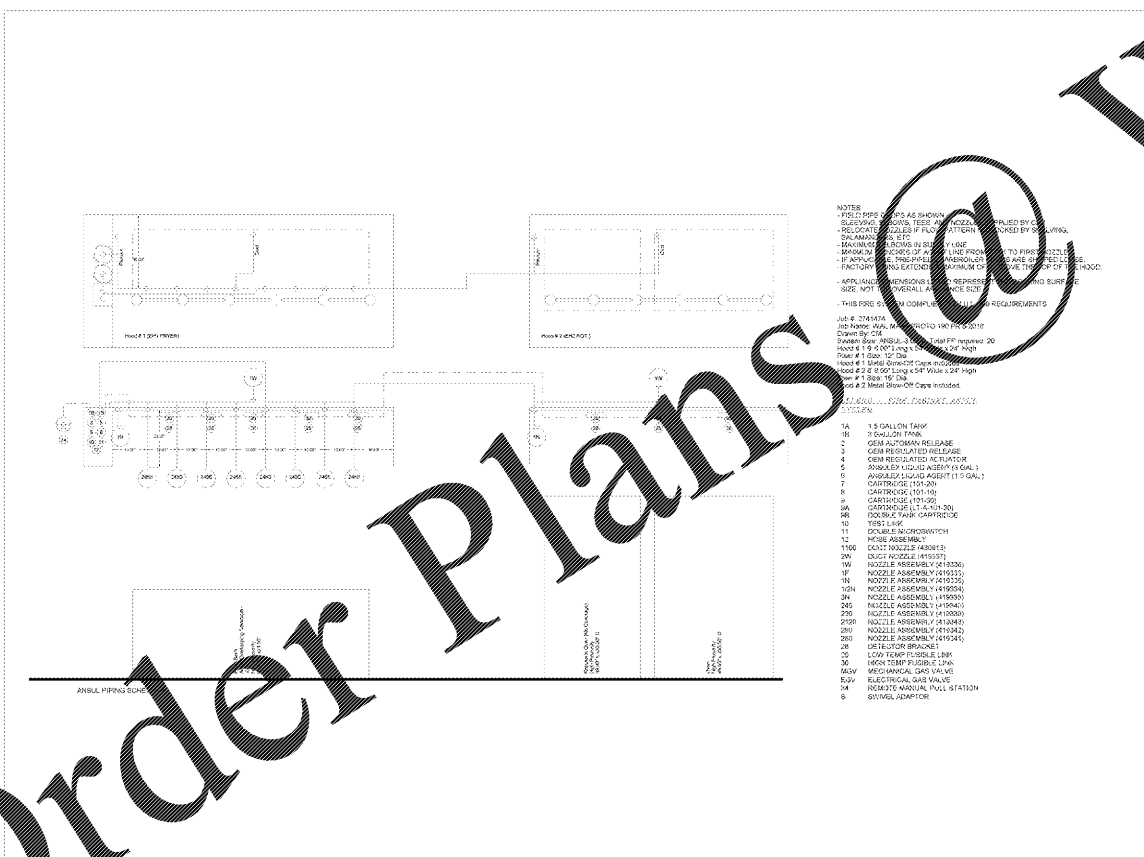
WAL MART PROTO 190 PR 8-2016

2/14/17

2/14/17

GM-40

MASTER DRAWING



**CAPTIVE AIR**

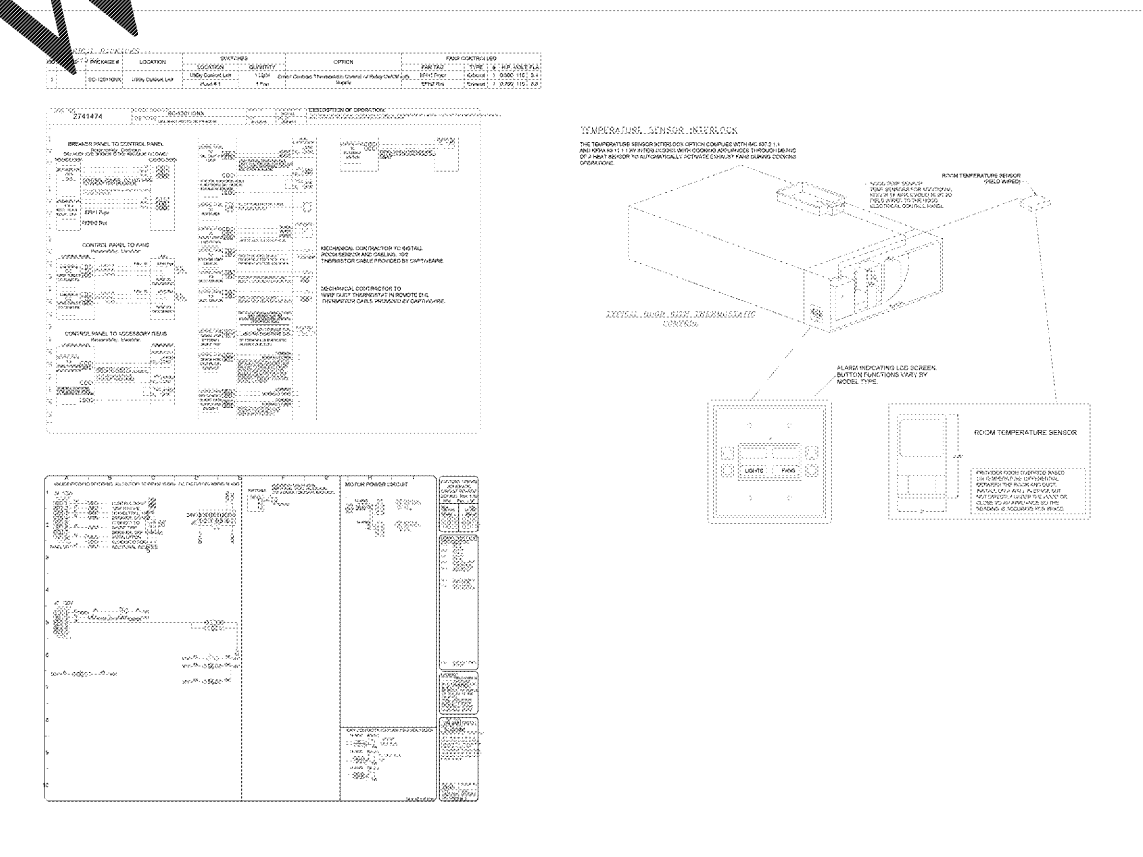
WAL MART PROTO 190 PR 8-2016

2/14/17

2/14/17

GM-40

MASTER DRAWING



**CAPTIVE AIR**

WAL MART PROTO 190 PR 8-2016

2/14/17

2/14/17

GM-40

MASTER DRAWING

STIPULATION FOR USE OF CAPTIVE AIR BRAND EXHAUST HOODS:

CONSULTANTS:

ISSUE BLOCK

11/30/17 OTB

CHECKED BY: Approver

DRAWN BY: Designer

FILE NAME: GM2

PROTO CYCLE: 19585

DOCUMENT DATE: 09/13/17

BID SET NOT FOR CONSTRUCTION

EXHAUST HOOD

NOTE:

THE INFORMATION ON THIS SHEET IS SUPPLIED BY CAPTIVE AIR AND DESCRIBES THE EXHAUST HOODS, FANS AND FIRE SUPPRESSION SYSTEM (WHERE APPLICABLE). THE EQUIPMENT WILL BE PURCHASED BY OWNER AND IS TO BE INSTALLED BY THE CONTRACTOR. REFER TO SPECIFICATIONS.

SHEET: GM2

**Order Plans @ WWW.LDILINE.COM**