

**KEYNOTES**

15.709 ROUTE GAS LINE THROUGH JOIST SPACE. COORDINATE WITH HVAC AND OTHER TRADES PRIOR TO INSTALLATION. DO NOT INSTALL PIPING DIRECTLY UNDER SKYLIGHT WELLS UNLESS INDICATED OTHERWISE ON PLANS.

**REDESIGN COLLABORATIVE**

STIPULATION FOR USE: THIS DOCUMENT IS THE PROPERTY OF RETAIL DESIGN COLLABORATIVE. IT IS TO BE USED ONLY FOR THE PROJECT AND SITE SPECIFICALLY IDENTIFIED HEREIN. IT IS NOT TO BE REPRODUCED, COPIED, OR TRANSMITTED IN ANY FORM OR BY ANY MEANS, ELECTRONIC OR MECHANICAL, INCLUDING PHOTOCOPYING, RECORDING, OR BY ANY INFORMATION STORAGE AND RETRIEVAL SYSTEM, WITHOUT THE WRITTEN PERMISSION OF RETAIL DESIGN COLLABORATIVE.

**David M. Hamill P.E.**  
CONSULTANTS  
11000 26th Ave, Suite 200  
Leesburg, VA 22075  
PHONE: 703.771.1100  
FAX: 703.771.1101  
WWW.DMHCORP.COM

**Walmart**  
LEESBURG, VIRGINIA  
STORE NO. 1804  
JOB NUMBER: 11000-26

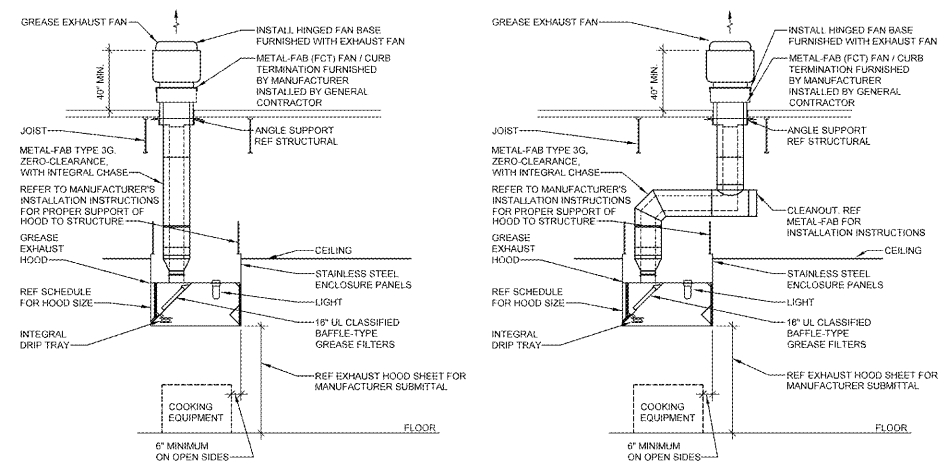
ISSUE BLOCK  
11/30/17 OTB

CHECKED BY: DPK  
DRAWN BY: JOS  
FILE NAME: GM1  
PROTO CYCLE: 04/28/17  
DOCUMENT DATE: 09/13/17

**BID SET NOT FOR CONSTRUCTION**

GROCERY HVAC PLAN AND DETAILS

SHEET: GM1



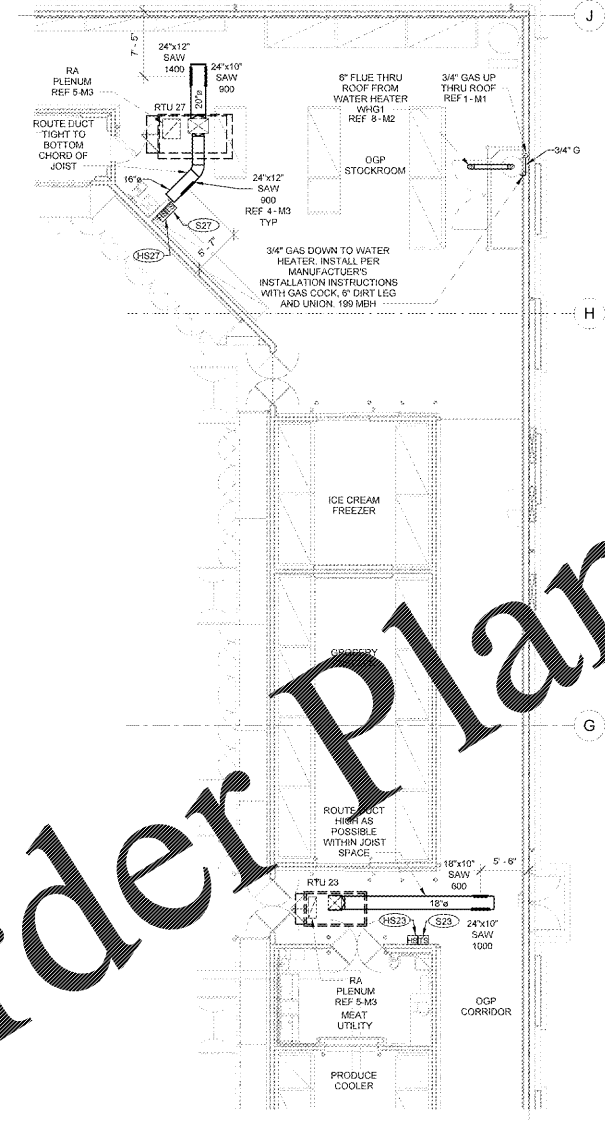
**3 EXHAUST HOOD DETAILS**

EXHAUST HOOD SCHEDULE - CAPTIVEAIRE										EXHAUST FAN SCHEDULE - CAPTIVEAIRE									
MARK	AREA SERVED	MODEL	CAPTURE LENGTH	CAPTURE WIDTH	CAPTURE HEIGHT	HOOD WEIGHT	HOOD SIZE	MARK	MODEL	CFM	ESP	HP	MAKE UP AIR	POWER SOURCE	NOTES				
EH 1	DELI FRYER	5424 ND-2M	8'-6"	54"	2'-0"	570 lb	12"	EPH 1	DU50HFA	1425	0.50	0.500	1425	1/2AHU2	A, B, D				
EH 2	DELI ROTISSERIE (FR)	5424 ND-2M	8'-9"	54"	2'-0"	403 lb	10"	EPH 2	DU50HFA	2384	0.80	0.750	2384	1/2AHU2	A, C, E				

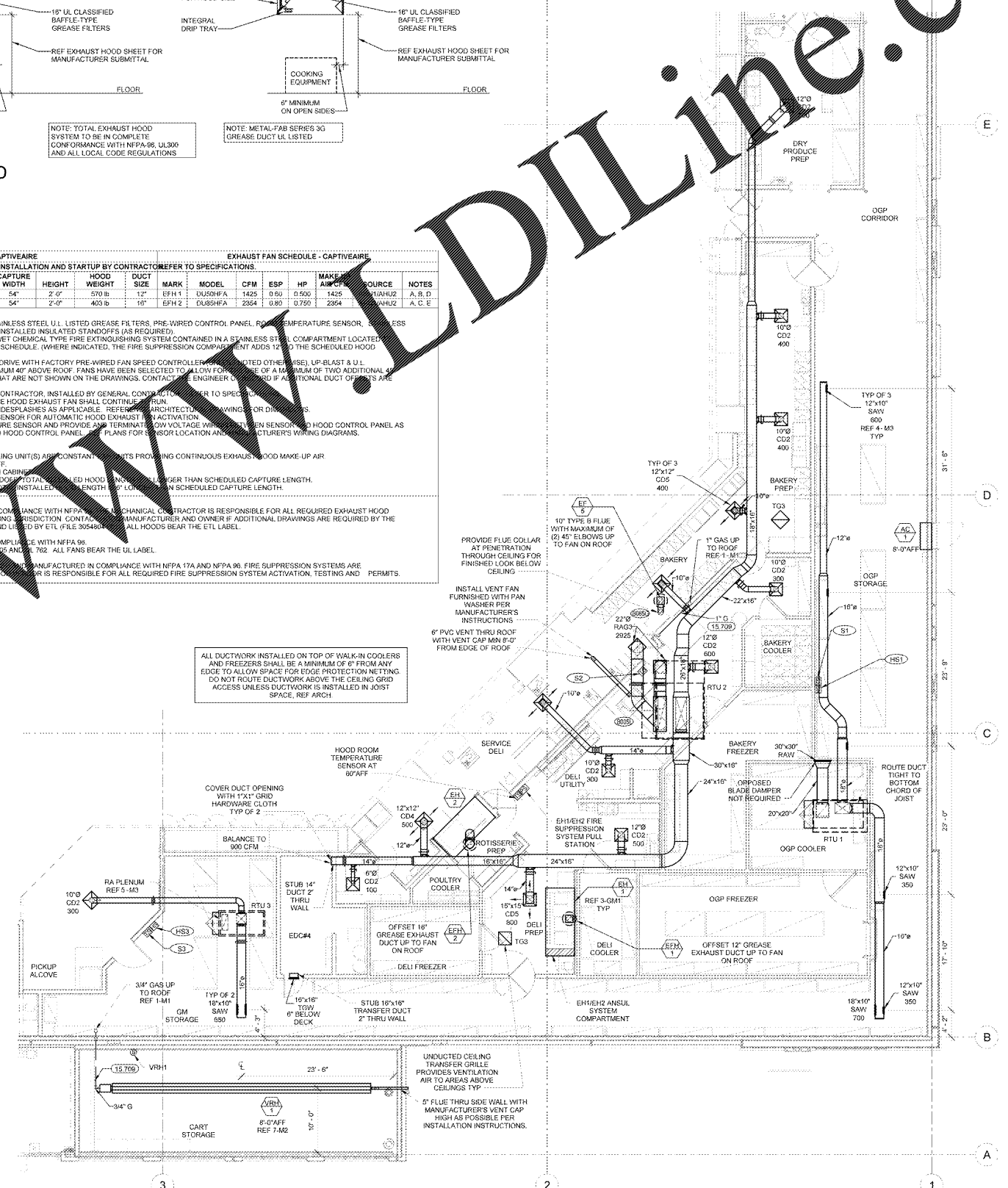
**GENERAL INFORMATION (ALL UNITS AS APPLICABLE):**  
 1. HOOD FURNISHED WITH INTEGRAL DRIP TRAY, LIGHTS, STAINLESS STEEL UL LISTED GREASE FILTERS, PRE-WIRED CONTROL PANEL, ROOM TEMPERATURE SENSOR, STEEL ENCLOSURE PANELS UP TO CEILING AND FACTORY INSTALLED INSULATED STANDOFFS (AS REQUIRED).  
 2. FIRE SUPPRESSION SYSTEM FOR HOOD SHALL BE ANSUL WET CHEMICAL TYPE FIRE EXTINGUISHING SYSTEM CONTAINED IN A STAINLESS STEEL COMPARTMENT LOCATED END OF HOOD UNLESS NOTED OTHERWISE ON PLANS AND SCHEDULE. (WHERE INDICATED, THE FIRE SUPPRESSION COMPONENT AIDS 1/2" THE SCHEDULED HOOD LENGTH).  
 3. EXHAUST FAN SHALL BE 120V, 1 PHASE, 60 HERTZ, DIRECT DRIVE WITH FACTORY PRE-WIRED FAN SPEED CONTROLLER. UNLESS NOTED OTHERWISE, UL LISTED 1/2" UL APPROVED FOR GREASE EXHAUST, WITH DISCHARGE MINIMUM 40' ABOVE ROOF. FANS HAVE BEEN SELECTED TO ALLOW FOR USE OF A MAXIMUM OF TWO ADDITIONAL 45 DEGREE ELBOWS IN THE GREASE EXHAUST DUCTWORK THAT ARE NOT SHOWN ON THE DRAWINGS. CONTACT THE ENGINEER TO VERIFY IF ADDITIONAL DUCT OFFSETS ARE REQUIRED BY SITE CONDITIONS.  
 4. EXHAUST FAN ROOF CURBS FURNISHED BY MECHANICAL CONTRACTOR, INSTALLED BY GENERAL CONTRACTOR. REFER TO SPECIFICATIONS FOR INSTALLATION INSTRUCTIONS.  
 5. UPON ACTIVATION OF THE FIRE SUPPRESSION SYSTEM, THE HOOD EXHAUST FAN SHALL CONTINUE TO RUN.  
 6. HOODS SHALL BE FURNISHED WITH BAZOOKAS AND SIDESPLASHES AS APPLICABLE. REFER TO ARCHITECTURAL DRAWINGS FOR DETAILS.  
 7. HOODS SHALL BE FURNISHED WITH DUCT TEMPERATURE SENSOR FOR AUTOMATIC HOOD EXHAUST FAN ACTIVATION.  
 8. MECHANICAL CONTRACTOR TO INSTALL ROOM TEMPERATURE SENSOR AND PROVIDE A 24V TERMINATED LOW VOLTAGE WIRE TO ROOM SENSOR TO HOOD CONTROL PANEL AS WELL AS BETWEEN EXH2 DUCT TEMPERATURE SENSOR AND HOOD CONTROL PANEL. SEE PLANS FOR SENSOR LOCATION AND WIRING DIAGRAMS.

**NOTES:**  
 A. HOOD SWITCH SHALL ENERGIZE EXHAUST FAN. AIR HANDLING UNIT(S) ARE CONSTANT RUNNING UNITS PROVIDING CONTINUOUS EXHAUST HOOD MAKE-UP AIR.  
 B. HOOD FURNISHED WITH ONE 3" INSULATED BACK STANDOFF.  
 C. HOOD SERVED FROM REMOTE FIRE SUPPRESSION SYSTEM CABINET.  
 D. HOOD FURNISHED WITH A SINGLE 3" INSULATED END STANDOFF. TOTAL INSULATED HOOD LENGTH SHALL BE LARGER THAN SCHEDULED CAPTURE LENGTH.  
 E. HOOD FURNISHED WITH 2" INSULATED END STANDOFFS. TOTAL INSULATED HOOD LENGTH SHALL BE LARGER THAN SCHEDULED CAPTURE LENGTH.

**CODE COMPLIANCE NOTES:**  
 1. EXHAUST HOODS ARE DESIGNED AND MANUFACTURED IN COMPLIANCE WITH NFPA 96. MECHANICAL CONTRACTOR IS RESPONSIBLE FOR ALL REQUIRED EXHAUST HOOD TESTING AND PERMITS REQUIRED BY THE AUTHORITY HAVING JURISDICTION. HOODS ARE TESTED AND LISTED IN ACCORDANCE WITH NFPA 96. ALL FANS BEAR THE UL LABEL.  
 2. EXHAUST FANS ARE DESIGNED AND MANUFACTURED IN COMPLIANCE WITH NFPA 96. FANS ARE TESTED AND LISTED IN ACCORDANCE WITH NFPA 96. ALL FANS BEAR THE UL LABEL.  
 3. EXHAUST HOOD FIRE SUPPRESSION SYSTEMS ARE DESIGNED AND MANUFACTURED IN COMPLIANCE WITH NFPA 17A AND NFPA 96. FIRE SUPPRESSION SYSTEMS ARE TESTED AND LISTED IN ACCORDANCE WITH NFPA 17A AND NFPA 96. MECHANICAL CONTRACTOR IS RESPONSIBLE FOR ALL REQUIRED FIRE SUPPRESSION SYSTEM ACTIVATION, TESTING AND PERMITS.



**2 REAR GROCERY HVAC PLAN**  
1/8" = 1'-0"



**1 FRONT GROCERY HVAC PLAN**  
1/8" = 1'-0"

**Order Plans @**