

KEYNOTES

- 15.100 ROUTE PIPING THROUGH JOIST SPACE. COORDINATE WITH HVAC AND OTHER TRADES PRIOR TO INSTALLATION. DO NOT INSTALL PIPING DIRECTLY UNDER SKYLIGHT WELLS UNLESS INDICATED OTHERWISE ON PLANS. COORDINATE WITH SPRINKLER CONTRACTOR PRIOR TO INSTALLATION IN ORDER TO MAINTAIN REQUIRED CLEARANCES FROM SPRINKLERS. REFER TO PIPE SUPPORT DETAIL FOR INSTALLATION.
- 15.135 GROCERY HAND SINKS ARE SERVED WITH SEPARATE 1/2" HOT WATER PIPING TO MEET THE DESIGN HW DELIVERY TIME. IF ALTERNATE 1/2" HW PIPE ROUTING IS NECESSARY, DO NOT EXCEED A 12'-0" PIPING RUN FROM HW LOOP TO THE SINK ROOM.

REDESIGN
RETAIL DESIGN COLLABORATIVE

CONSULTANTS
David P. Hamill P.E.
MECHANICAL ENGINEER
11090/26

Walmart
LEESBURG, VIRGINIA
STORE NO. 1804
JOB NUMBER 11090/26

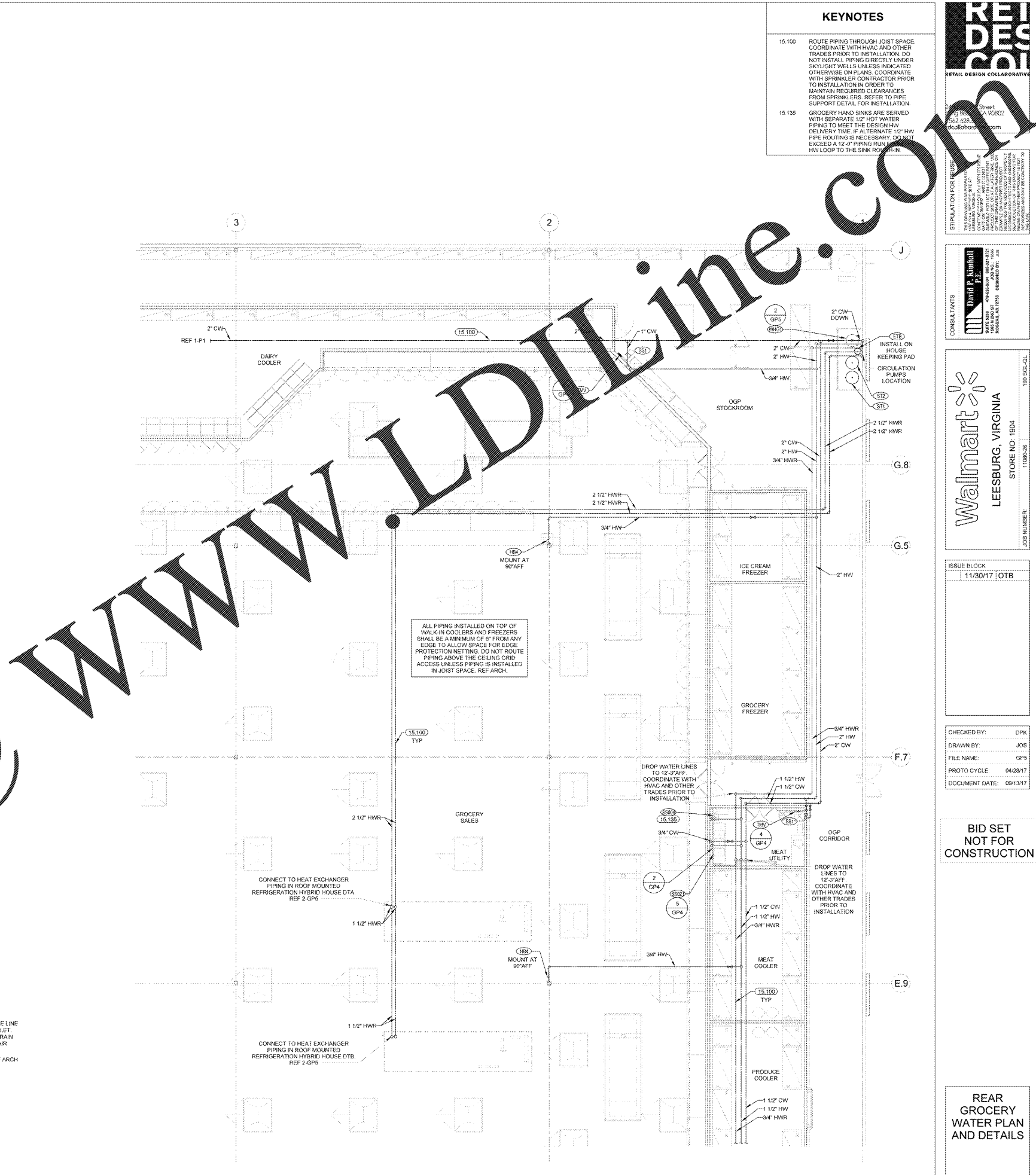
ISSUE BLOCK
11/30/17 :OTB

CHECKED BY: DPK
DRAWN BY: JOS
FILE NAME: GP5
PROTO CYCLE: 04/28/17
DOCUMENT DATE: 09/13/17

**BID SET
NOT FOR
CONSTRUCTION**

**REAR
GROCERY
WATER PLAN
AND DETAILS**

SHEET:
GP5

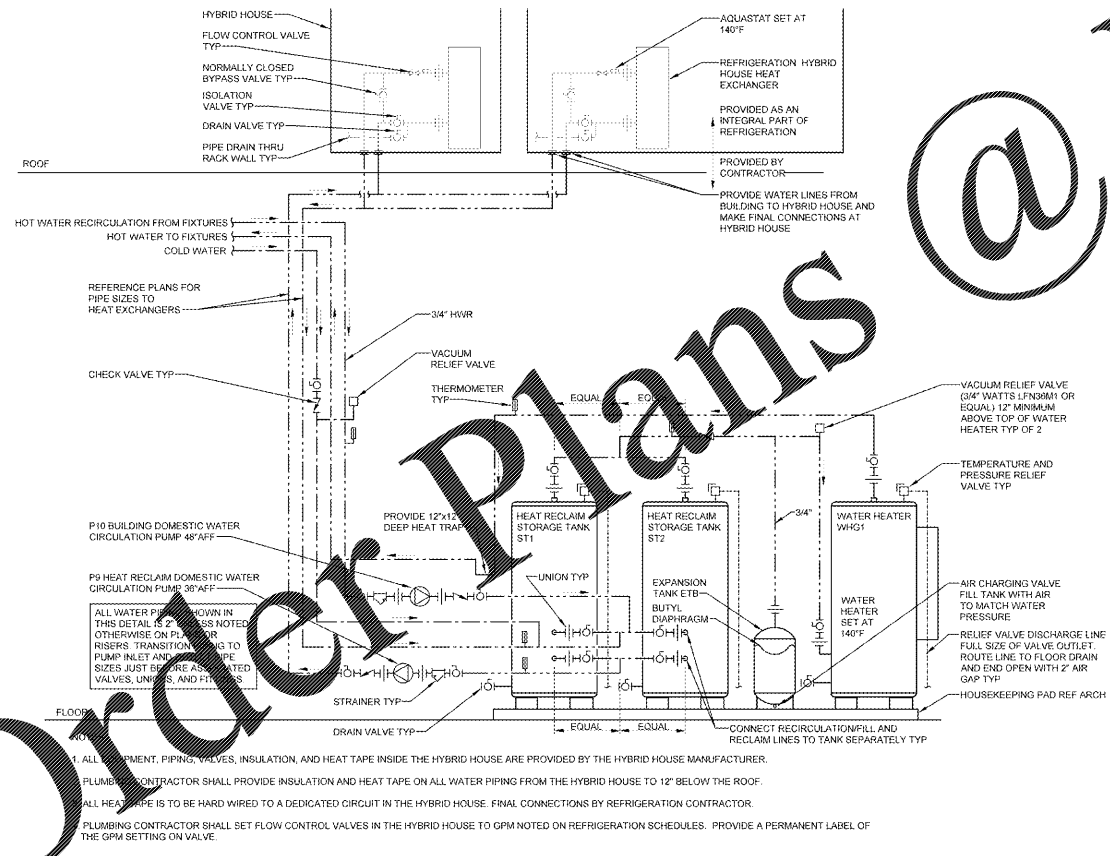


ALL PIPING INSTALLED ON TOP OF WALK-IN COOLERS AND FREEZERS SHALL BE A MINIMUM OF 6" FROM ANY EDGE TO ALLOW SPACE FOR EDGE PROTECTION NETTING. DO NOT ROUTE PIPING ABOVE THE CEILING GRID ACCESS UNLESS PIPING IS INSTALLED IN JOIST SPACE. REF ARCH.

DROP WATER LINES TO 12'-0\"/>

CONNECT TO HEAT EXCHANGER PIPING IN ROOF MOUNTED REFRIGERATION HYBRID HOUSE DTA. REF 2-GP5

CONNECT TO HEAT EXCHANGER PIPING IN ROOF MOUNTED REFRIGERATION HYBRID HOUSE DTB. REF 2-GP5



2 HEAT RECLAIM STORAGE SYSTEM AND WATER HEATER
NTS

1 REAR GROCERY WATER PLAN
1/8" = 1'-0"

Order Plans @

WWW.LDOnline.com