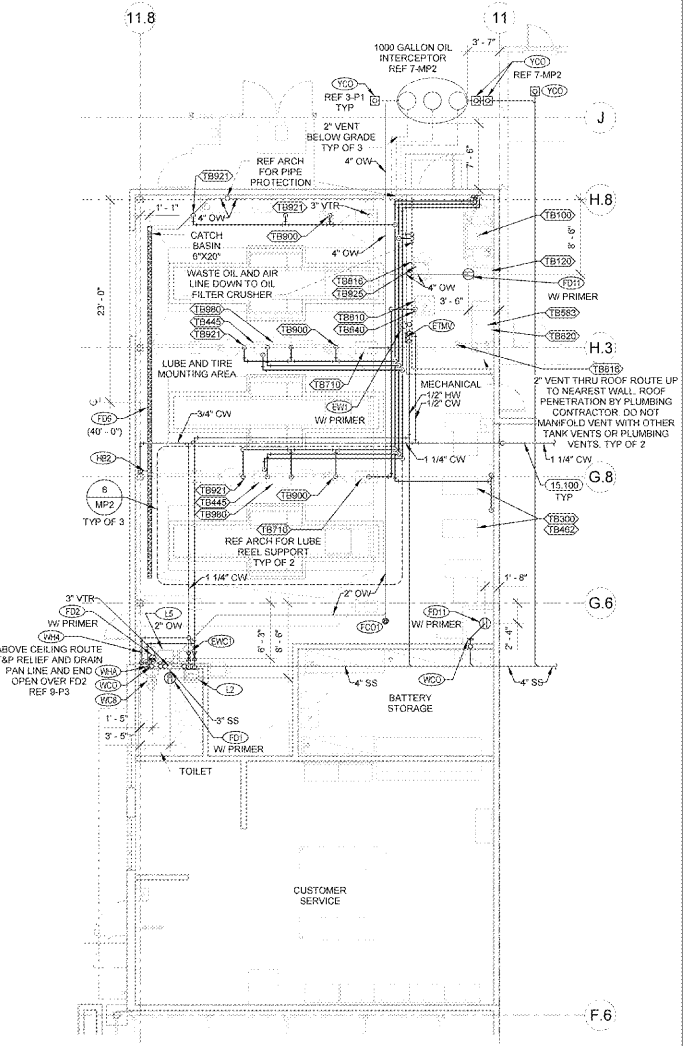
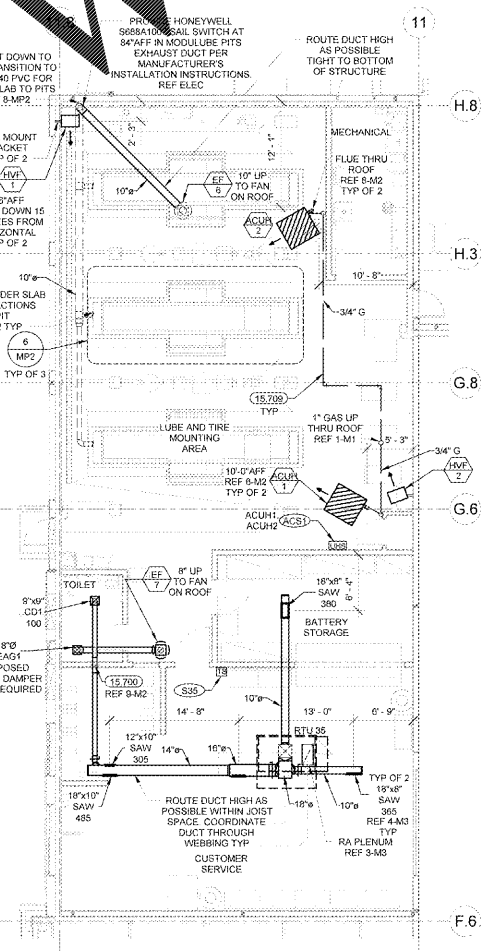
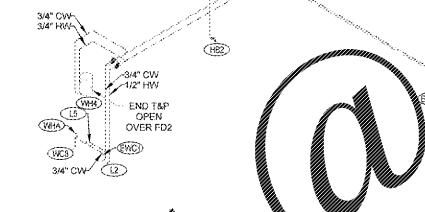
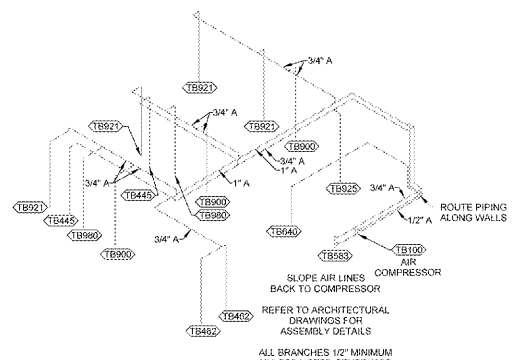
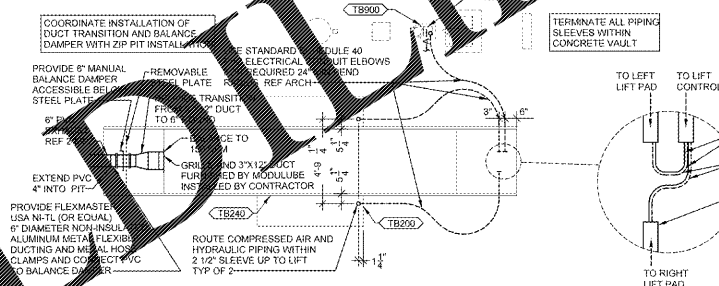
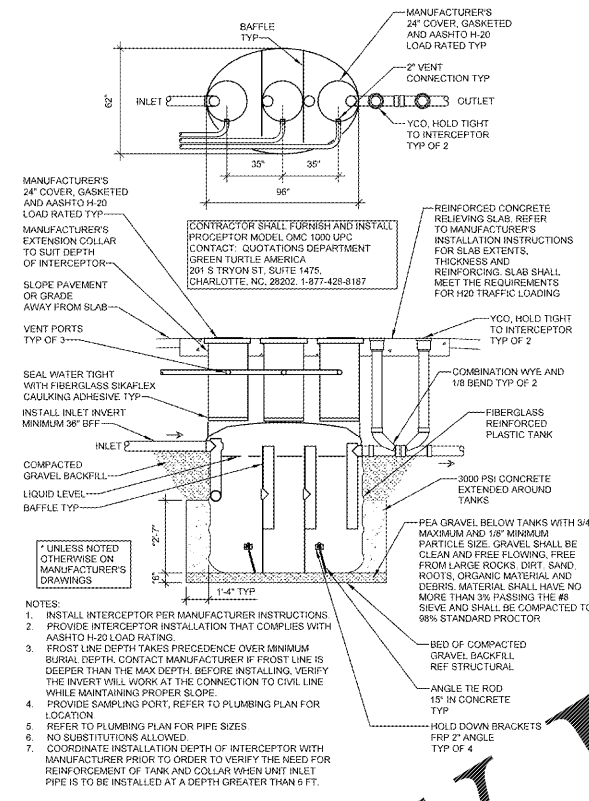
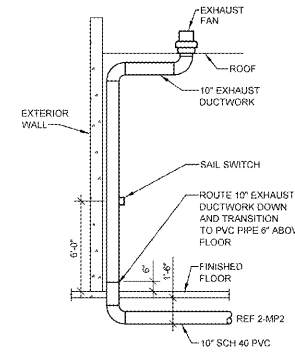


**Order Plans @**

**WWW.WWJOnline.com**



**KEYNOTES**

- ROUTE PIPING THROUGH JOIST SPACE. COORDINATE WITH HVAC AND OTHER TRADES PRIOR TO INSTALLATION. DO NOT INSTALL PIPING DIRECTLY UNDER SKYLIGHT WELLS UNLESS INDICATED OTHERWISE ON PLANS. COORDINATE WITH SPRINKLER CONTRACTOR PRIOR TO INSTALLATION IN ORDER TO MAINTAIN REQUIRED CLEARANCES FROM SPRINKLERS. REFER TO PIPE SUPPORT DETAIL FOR INSTALLATION.
- INSTALL BRANCH LINE CONNECTION FITTING WITH INLET ROTATED UP 15° MINIMUM ABOVE HORIZONTAL TO PREVENT BACKFLOW. REFER TO DWV BRANCH CONNECTION DOWNSTREAM OF TOILET DETAIL.
- PROVIDE FIRE OR CEILING JOINT DAMPERS PER AUTHORITY HAVING JURISDICTION. PROVIDE ACCESS TO DAMPERS AS REQUIRED.
- ROUTE ALL PIPING THROUGH JOIST SPACE (COORDINATE WITH HVAC AND OTHER TRADES PRIOR TO INSTALLATION). DO NOT INSTALL DIRECTLY UNDER SKYLIGHT WELLS UNLESS NOTICED OTHERWISE ON PLANS.

**RETAIL DESIGN COLLABORATIVE**

**Walmart**  
LEESBURG, VIRGINIA  
STORE NO. 1804

ISSUE BLOCK  
11/30/17 - OTB

CHECKED BY: DPK  
DRAWN BY: JOS  
FILE NAME: MP2  
PROTO CYCLE: 04/28/17  
DOCUMENT DATE: 09/13/17

BID SET NOT FOR CONSTRUCTION

AUTO CENTER PLANS AND DETAILS

SHEET: MP2