

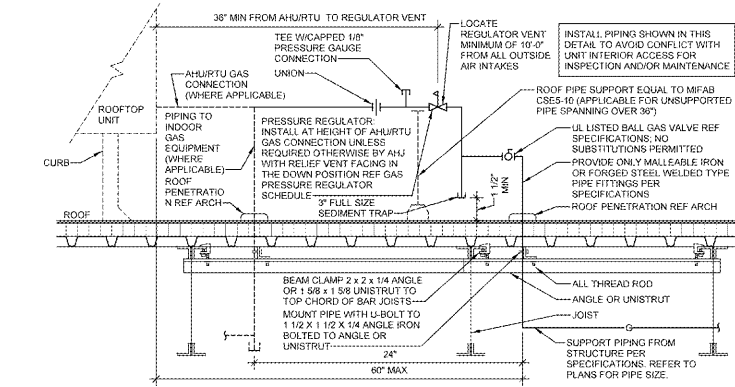
ROOFTOP EQUIPMENT PIPING RUNOUT		
EQUIPMENT	GAS PIPE SIZE UPSTREAM OF REGULATOR (IN)	GAS PIPE SIZE DOWNSTREAM OF REGULATOR (IN)
5 TON RTU	3/4	3/4
5 TON RTU	3/4	3/4
10 TON RTU	3/4	1
20 TON RTU	1	1 1/2
AHU	1	1 1/2

GENERAL INFORMATION:  
 1. RUNOUT SIZES ARE FOR INDIVIDUAL PIECES OF EQUIPMENT. REFER TO PLAN FOR COMBINED LINES SIZES.  
 2. GAS PIPE SIZES REFLECT A MAXIMUM 10'-0" PIPE LENGTH FROM REGULATOR TO APPLIANCE.

NATURAL GAS PRESSURE REGULATOR SCHEDULE						
MANUFACTURER	CAPACITY RANGE (CFH)	MODEL NUMBER	BODY SIZE INLET-OUTLET (INCHES)	SPRING RANGE (IN W.C.)	MINIMUM ORIFICE (IN)	NOTES
ITRON	0-575	B-42R	3/4-1	5.5-9	1/2 x 9/16	A, D, E
	575-900	B-31R	1 1/4-1 1/4	4-9	1/2	
	891-1920	B-34R	2-2	5-9	7/8 x 1	
ITRON	0-459	B-42R	3/4-1	5-14	1/2 x 9/16	A, C, D, E
	440-674	B-31R	1 1/4-1 1/4	8-12	1/2	
	675-1074	B-34R	2-2	8.5-12.5	7/8 x 1	
MAXITROL	0-425	325-3L	3/4-1	7-11	N/A	B, C, D
	426-1250	325-7AL	1 1/4-1 1/2	7-11	N/A	
	0-520	325-6L48	3/4	7-11	N/A	B, C, E
MAXITROL	521-655	325-9L200	1	7-11	N/A	
	499-1250	325-7AL204D	1 1/4-1 1/2	7-11	N/A	

GENERAL INFORMATION (ALL REGULATORS):  
 1. MINIMUM INLET PRESSURE: 1.5 PSI. SET OUTLET PRESSURE TO 7 INCHES WATER COLUMN UNLESS NOTED OTHERWISE. VERIFY CAPACITY SHOWN ON PLANS WITH CAPACITY SCHEDULED FOR EACH REGULATOR MANUFACTURER BEFORE ORDERING. CAPACITIES VARY BETWEEN MANUFACTURERS.  
 2. REGULATORS MUST BE ANSI Z21.80/CSA 6.22 APPROVED.  
 3. REGULATORS MUST BE ANSI Z21.80/CSA 6.22 APPROVED.

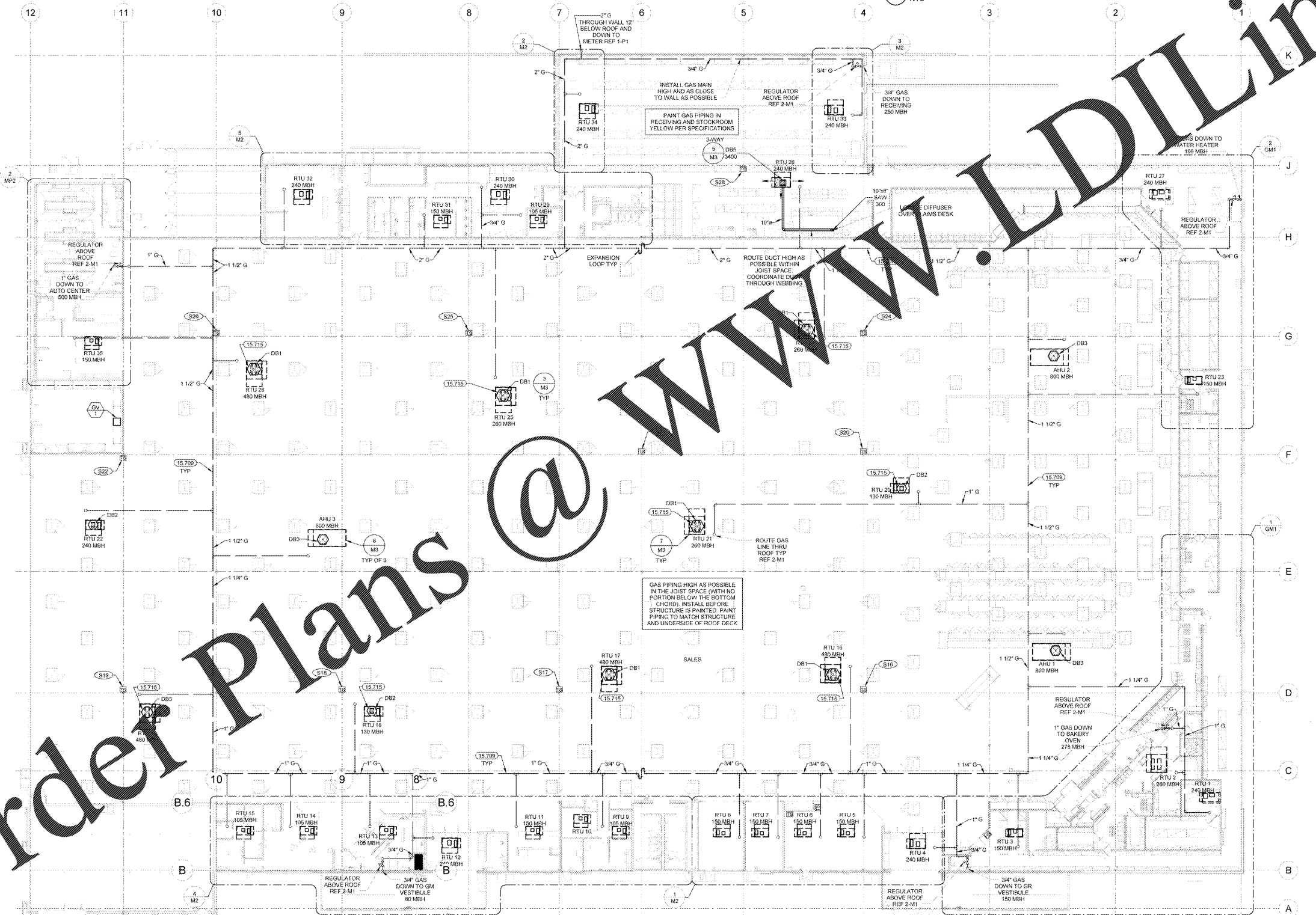
NOTES:  
 A. FURNISHED WITH INTERNAL RELIEF VALVE.  
 B. FURNISHED WITH VENT PROTECTOR FOR OUTDOOR USE.  
 C. FOR MOUNTING UNIT USE SPRING RANGE TO SET OUTLET PRESSURE AT 11 INCHES OF WATER COLUMN.  
 D. APPLICABLE FOR SP5G GAS SYSTEMS.  
 E. APPLICABLE FOR SP5G GAS SYSTEMS.  
 CONTACT INFORMATION: ITRON/MIDWEST GAS EQUIPMENT, INC. 1-877-962-8808. MAXITROL: 1-248-356-1400.



2 ROOFTOP GAS REGULATOR NOTES

- GENERAL NOTES**
- FLEXIBLE DUCTWORK IS NOT PERMITTED.
  - REFER TO STRUCTURAL DRAWINGS FOR EXACT LOCATIONS OF ROOFTOP EQUIPMENT.
  - REFER TO STRUCTURAL DRAWINGS FOR EXACT LOCATIONS OF ROOFTOP EQUIPMENT.
  - LIGHT FIXTURE LOCATIONS TAKE PRECEDENCE OVER DIFFUSER AND GRILLE LOCATIONS. LOCATE DIFFUSERS AND GRILLES TO ACCOMMODATE LIGHTING LAYOUT. DO NOT INSTALL DUCTWORK OR EQUIPMENT DIRECTLY UNDER SKYLIGHT WELLS UNLESS NOTED OTHERWISE ON PLANS.
  - DUCT SIZES SHOWN ON DRAWINGS ARE NET FREE AREA. INCREASE RECTANGULAR DUCT METAL SIZE AS REQUIRED FOR THE THICKNESS CONTRACTORS USE ON ROUND DUCTWORK OF EQUIVALENT FREE AREA MAY BE USED IN LIEU OF SQUARE DUCTWORK.
  - DUCT SUPPORT AND BRACE DETAIL AND SUPPORT DUCTWORK FROM BEACH USE FASTENERS THAT PENETRATE ROOF DECK. PROVIDE CONFORMING TRANSITIONS FOR EXPOSED SPIRALS WITHIN THE SALES AREA.
  - PROVIDE FIRE SMOKE AND/OR CEILING PENETRATION DAMPERS WHERE SHOWN ON PLANS AND PER APPLICABLE HAVING JURISDICTION. PROVIDE ACCESS TO DAMPERS AS REQUIRED PER TO ARCHITECTURAL DRAWINGS FOR VERIFICATION OF RATED WALLS AND CEILING.
  - HIGH EFFICIENCY BRANCH DUCT FITTING DETAIL IS APPLICABLE THROUGHOUT THE STORE.
  - PROVIDE VOLUME CONTROL DAMPERS IN DUCTS TO DIFFUSERS. INSTALL DAMPERS A MINIMUM OF 24\"/>

- KEYNOTES**
- ROUTE GAS LINE THROUGH JOIST SPACE. COORDINATE WITH HVAC AND OTHER TRADES PRIOR TO INSTALLATION. DO NOT INSTALL PIPING DIRECTLY UNDER SKYLIGHT WELLS UNLESS INDICATED OTHERWISE ON PLANS.
  - ADJUST LOUVER FOR HORIZONTAL THROW TO NOT BLOW AIR ON TEMPERATURE SENSOR.



1 HVAC PLAN 1" = 20'-0"

**RETAIL DESIGN COLLABORATIVE**

Street: 100 S. ...  
 Suite: ...  
 Phone: ...

**CONSULTANTS**  
 David P. ...  
 1100 S. ...  
 Leesburg, VA 20176

**Walmart**  
 LEESBURG, VIRGINIA  
 STORE NO. 1804  
 1100 S. ...

ISSUE BLOCK  
 11/30/17 :OTB

CHECKED BY: DPK  
 DRAWN BY: JOS  
 FILE NAME: M1  
 PROTO CYCLE: 04/28/17  
 DOCUMENT DATE: 09/13/17

**BID SET FOR CONSTRUCTION**

HVAC PLAN

SHEET: M1

Order Plans @