

| GENERAL SPRINKLER INFORMATION | |
|---|--|
| 1. NAME AND LOCATION OF FACILITY: | WALMART #1004 LEESBURG, VIRGINIA |
| 2. PRESENCE OF HPS/RACK STORAGE: | RECEIVING AREA |
| 3. MAXIMUM HEIGHT OF STORAGE: | 15 FT AT RECEIVING, 12 FT AT SALES FLOOR AND GARDEN CENTER |
| 4. AISLE WIDTH PLANNED: | 8 FT AT RECEIVING, 5 FT AT SALES, 5 FT AT GARDEN CENTER |
| 5. COMMODITY CLASSIFICATION: | CLASS I-IV (GROUP A PLASTICS) |
| 6. ENCAPSULATION OF PALLET LOADS: | NONE |
| 7. PRESENCE OF SOLID SHELVING: | NONE |
| 8. FLOW TEST DATA: | REFER TO FP1, WATER SUPPLY INFORMATION |
| 9. PRESENCE OF FLAMMABLE/COMBUSTIBLE LIQUIDS: | COMPLIES WITH NFPA 30 AND FIRE CODE LIMITATIONS FOR MERCANTILE OCCUPANCY |
| 10. PRESENCE OF HAZARDOUS MATERIALS: | COMPLIES WITH FIRE CODE LIMITATIONS FOR MERCANTILE OCCUPANCY |
| 11. PRESENCE OF OTHER SPECIAL STORAGE: | NONE |
| 12. LOCATION OF AUXILIARY POINT DRAINS: | PER AS-BUILT SYSTEM AND PLANS |
| 13. ORIGINAL MAIN DRAIN FLOW TEST RESULTS: | CONTRACTOR TEST RESULTS TO BE DETERMINED |
| 14. INSTALLING CONTRACTOR: | CONTRACTOR NAME TO BE DETERMINED |
| 15. PRESENCE/LOCATION OF AUX SYSTEMS: | DRY PIPE SYSTEM AT FIRE STORAGE |

RETAL DESIGN COLLABORATIVE
 11000 26th Drive #100
 Leesburg, VA 22079
 (703) 444-1100
 www.collaborative.com

CONSULTANTS
Ricky L. Terrell
 P.E.
 11000 26th Drive #100
 Leesburg, VA 22079
 (703) 444-1100
 www.collaborative.com

Walmart
LEESBURG, VIRGINIA
 STORE NO. 1904
 11000 26th Drive
 LEESBURG, VA 22079
 JOB NUMBER: 0428917

ISSUE BLOCK
 11/30/17 : OTB

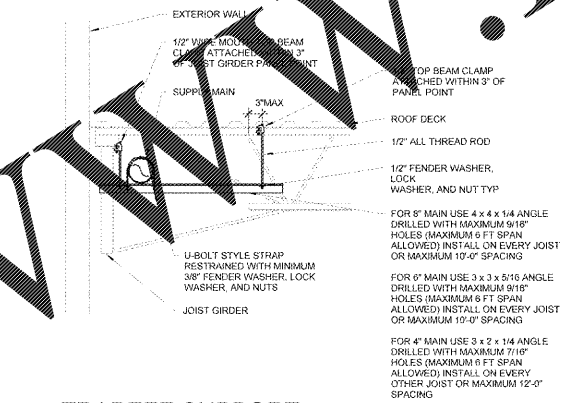
CHECKED BY: ERP
 DRAWN BY: REI
 FILE NAME: FP3.1
 PROTO CYCLE: 9586
 DOCUMENT DATE: 09/13/17

BID SET NOT FOR CONSTRUCTION

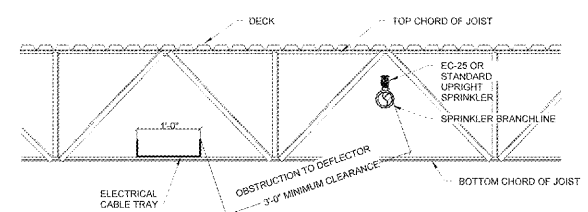
FIRE PROTECTION DETAILS

SHEET: **FP3.1**

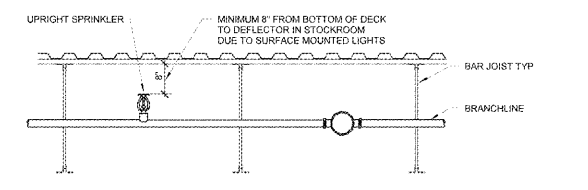
WWW.LDILine.com



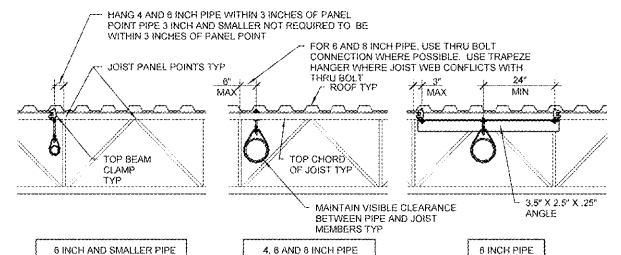
6 TRAPEZE SUPPORT
 NTS



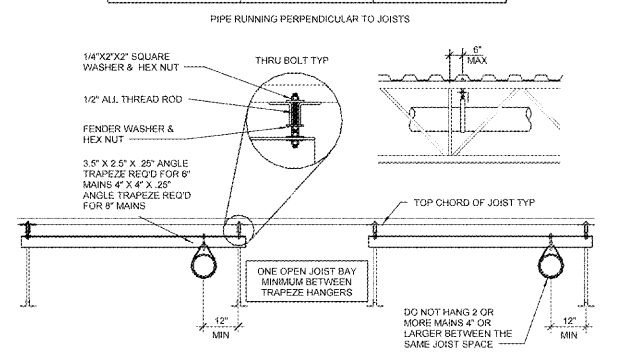
4 CABLE TRAY SPRINKLER
 NTS



2 PIPING
 NTS



| MAXIMUM HANGER SPACING FOR PIPING PERPENDICULAR TO JOISTS | | |
|---|--|---------------------------------|
| BEAM CLAMP NOT TRAPEZED | THRU-BOLT NOT TRAPEZED | BEAM CLAMP TRAPEZED |
| 4" PIPE EVERY 12'-0" EVERY OTHER JOIST | 4" PIPE EVERY 12'-0" EVERY OTHER JOIST | 4" PIPE NOT NECESSARY |
| 6" PIPE EVERY 6'-0" EVERY OTHER JOIST | 6" PIPE EVERY 12'-0" EVERY OTHER JOIST | 6" PIPE NOT NECESSARY |
| 8" PIPE NOT ALLOWED | 8" PIPE EVERY 6'-0" EVERY JOIST | 8" PIPE EVERY 6'-0" EVERY JOIST |



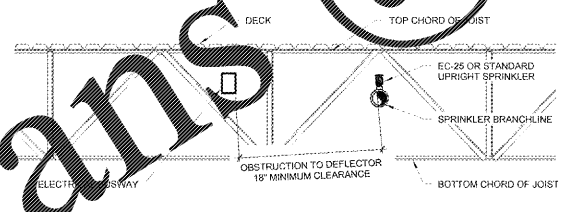
| MAXIMUM HANGER SPACING FOR PIPES PARALLEL TO JOISTS | | |
|---|---|---|
| 4" PIPE EVERY 12'-0" NOT TRAPEZED BEAM CLAMP | 6" PIPE EVERY 12'-0" TRAPEZED THRU BOLT | 8" PIPE EVERY 12'-0" TRAPEZED THRU BOLT |

CONTRACTOR MAY SUBSTITUTE ANGLE IRON TRAPEZE MEMBER WITH PIPE MEMBER. SIZE PIPE MEMBER IN ACCORDANCE WITH NFPA-13 AND MAINTAIN 12 INCH MAXIMUM DEFLECTOR DISTANCE

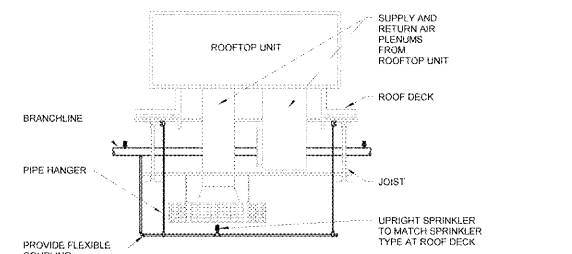
UTILIZE THESE HANGING METHODS FOR ALL SPRINKLER PIPING. SPACE TRAPEZE HANGERS IN ACCORDANCE WITH SCHEDULE. LOCATE HANGERS WITHIN 3 INCHES OF JOIST PANEL POINTS U.N.O.

NOTE: DO NOT SUPPORT SPRINKLER PIPING FROM BOTTOM CHORD OF BAR JOISTS

1 SPRINKLER PIPE SUPPORT
 NTS



5 BUSWAY SPRINKLER
 NTS



3 RTU SPRINKLER DROP
 NTS

Order Plans @