

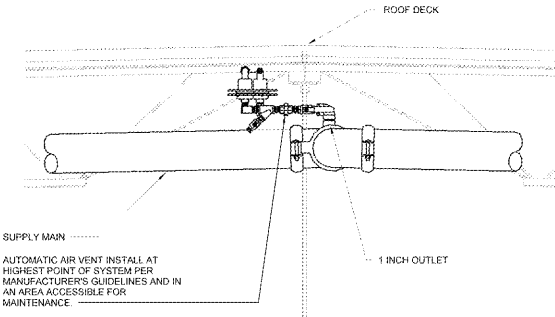
PUMP AND COMPRESSOR SCHEDULE						
MARK	SERVICE	MANUFACTURER	MODEL	HP	VRPH/Hz	NOTES
AC1	AIR COMPRESSOR	GENERAL	OL36550ACT	.5	115/180	A
FP	DRY RISER ROOM	PEERLESS	46ATS	100	120/180	B,C
JP	FIRE JOCKEY PUMP	GRUNDFOSS	CR1-10	1.5	460/380	B

NOTES

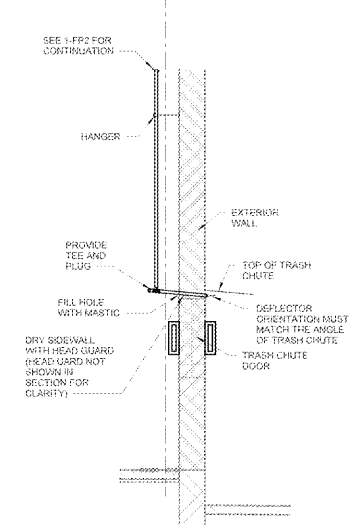
A. CONTRACTOR-PROVIDED EQUIPMENT. HORSEPOWER, VOLTAGE, PHASE, AND CYCLES SHOWN INDICATE ELECTRICAL DESIGN PARAMETERS. CONTRACTOR TO CONFIRM SELECTED COMPRESSOR IS RATED FOR DRY SYSTEM VOLUME INSTALLED.

B. OWNER-PROVIDED ITEM. REFER TO SPECIFICATION 13605 AND MATERIAL SUBMITTAL FOR ADDITIONAL INFORMATION.

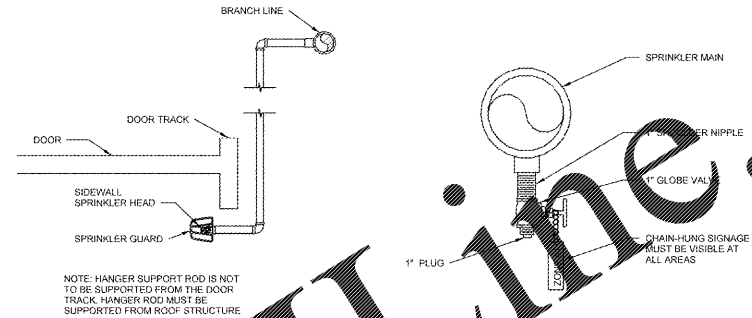
C. FIRE PUMP HAS 100 HP THREE-PHASE INDUCTION MOTOR. POWER REQUIREMENTS SHOWN FOR FIRE PUMP CONTROLLER.



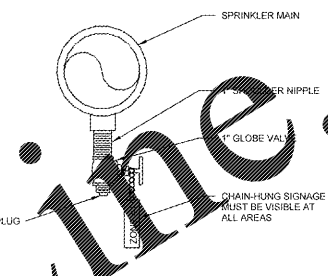
8 AIR RELEASE VENT
NTS



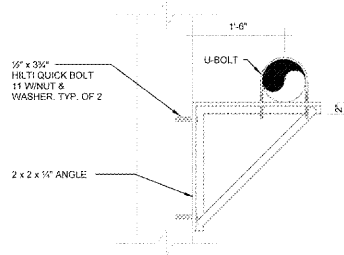
7 COMPACTOR SPRINKLER
NTS



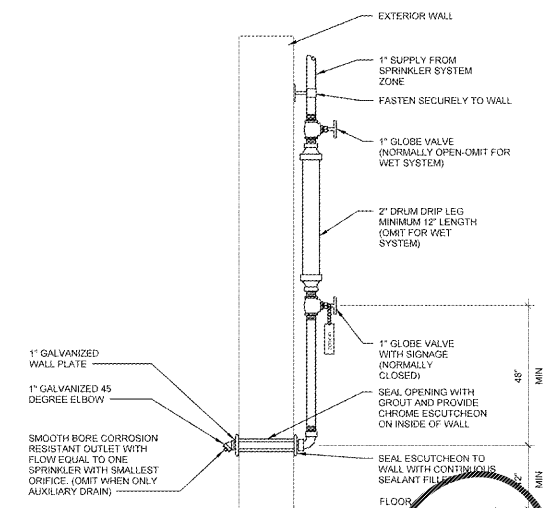
6 ROLL-UP DOOR
NTS



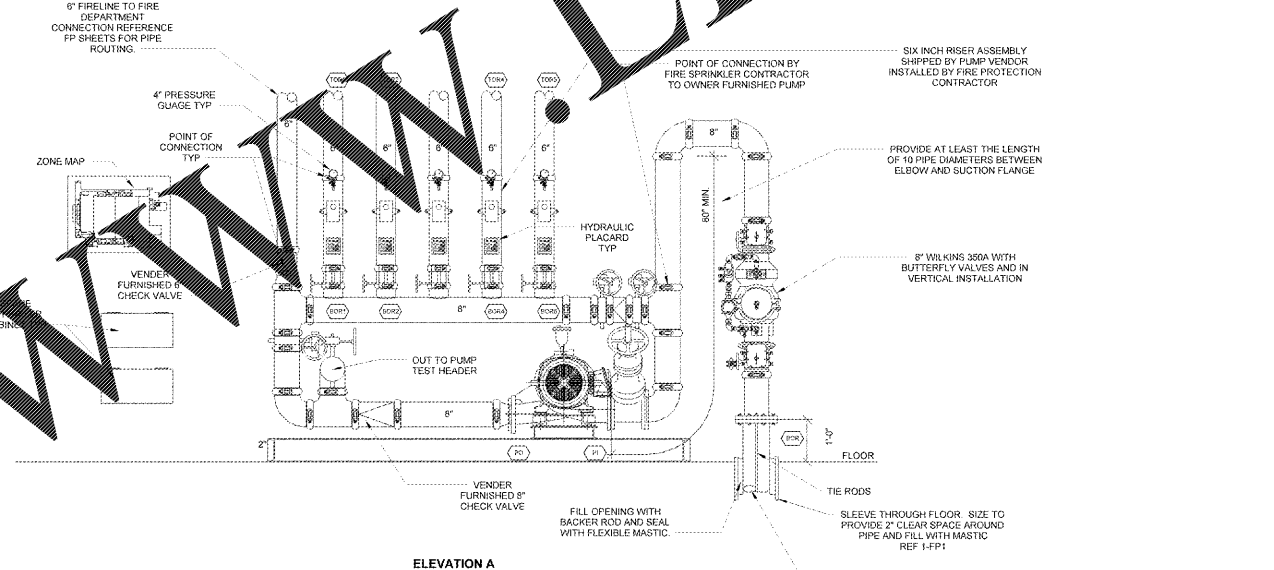
5 AUXILIARY DRAIN
NTS



4 PIPE WALL HANGING DETAIL
NTS



3 DRUM DRIP/AUXILIARY DRAIN/INSPECTOR'S TEST
NTS



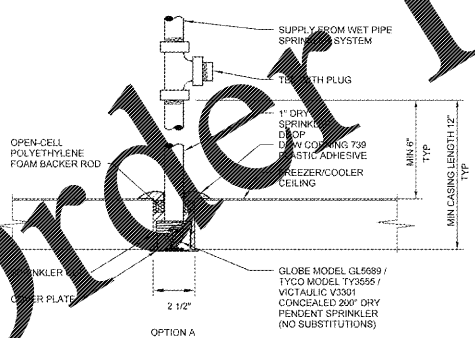
1 ELECTRIC FIRE PUMP
NTS

OPTION "A" INSTALLATION PROCEDURE

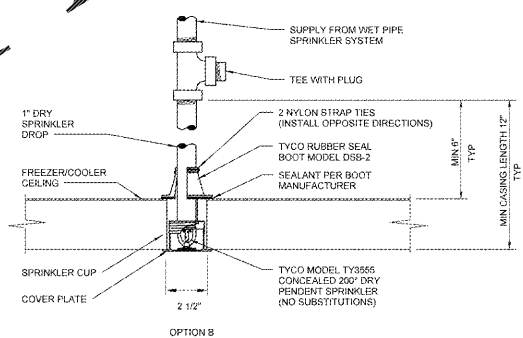
- CORE DRILL 2 1/2" DIAMETER HOLE IN THE FREEZER/COOLER INSULATED CEILING PANEL. LOCATE HOLE AND REQUIRED SPRINKLER PROTECTION IN ACCORDANCE WITH NFPA 13 OBSTRUCTION CRITERIA (SSP TYPE SPRINKLERS). MAINTAIN 6" CLEARANCE FROM COOLER SEAMS.
- INSTALL DRY PENDENT SPRINKLER PER MANUFACTURER'S INSTALLATION REQUIREMENTS.
- COMPLETELY FILL ANNULAR CEILING OPENING BETWEEN THE ESCUTCHEON AND TOP OF CEILING PANEL WITH OPEN-CELL POLYETHYLENE FOAM BACKER ROD. EXPANDED FOAM IS NOT PERMITTED.
- INJECT DOW CORNING 739 PLASTIC ADHESIVE SEALANT INTO AND AROUND THE TOP OF THE FREEZER/COOLER CEILING CORE OPENING IN ACCORDANCE WITH SEALANT MANUFACTURER'S INSTRUCTIONS.

OPTION "B" INSTALLATION PROCEDURE

- CORE DRILL 2 1/2" DIAMETER HOLE IN THE FREEZER/COOLER INSULATED CEILING PANEL. LOCATE HOLE AND REQUIRED SPRINKLER PROTECTION IN ACCORDANCE WITH NFPA 13 OBSTRUCTION CRITERIA (SSP TYPE SPRINKLERS). MAINTAIN 6" CLEARANCE FROM COOLER SEAMS.
- INSTALL DRY PENDENT SPRINKLER PER MANUFACTURER'S INSTALLATION REQUIREMENTS. INSERT BACKER TO MAKE-UP WITH PIPE.
- COMPLETELY FILL ANNULAR CEILING OPENING BETWEEN BOOT FLANGE AND TOP OF FREEZER/COOLER CEILING WITH SEALANT PROVIDED WITH BOOT IN ACCORDANCE WITH MANUFACTURER'S INSTRUCTIONS.
- APPLY SEALANT TO BOOT AROUND DRY SPRINKLER BARREL PER MANUFACTURER'S INSTRUCTIONS.



2 FREEZER COOLER DRY PENDENT
NTS



NOTE: CONTRACTOR TO SEAL DRY PENDENT SPRINKLERS AT FREEZER/COOLER USING ONE OF THE OPTIONS ABOVE. NO OTHER SEALANTS ARE PERMITTED.

RETAIL DESIGN COLLABORATIVE

Walmart
LEESBURG, VIRGINIA

STORE NO.: 1904
11000/261 : PHOTO

JOB NUMBER: 042817

ISSUE BLOCK

11/30/17 : OTB

CHECKED BY: ERP
DRAWN BY: REI
FILE NAME: FP3
PROTO CYCLE: 19585
DOCUMENT DATE: 09/13/17

BID SET NOT FOR CONSTRUCTION

FIRE PROTECTION DETAILS

SHEET: FP3