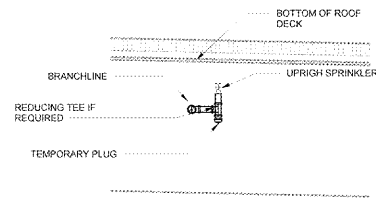
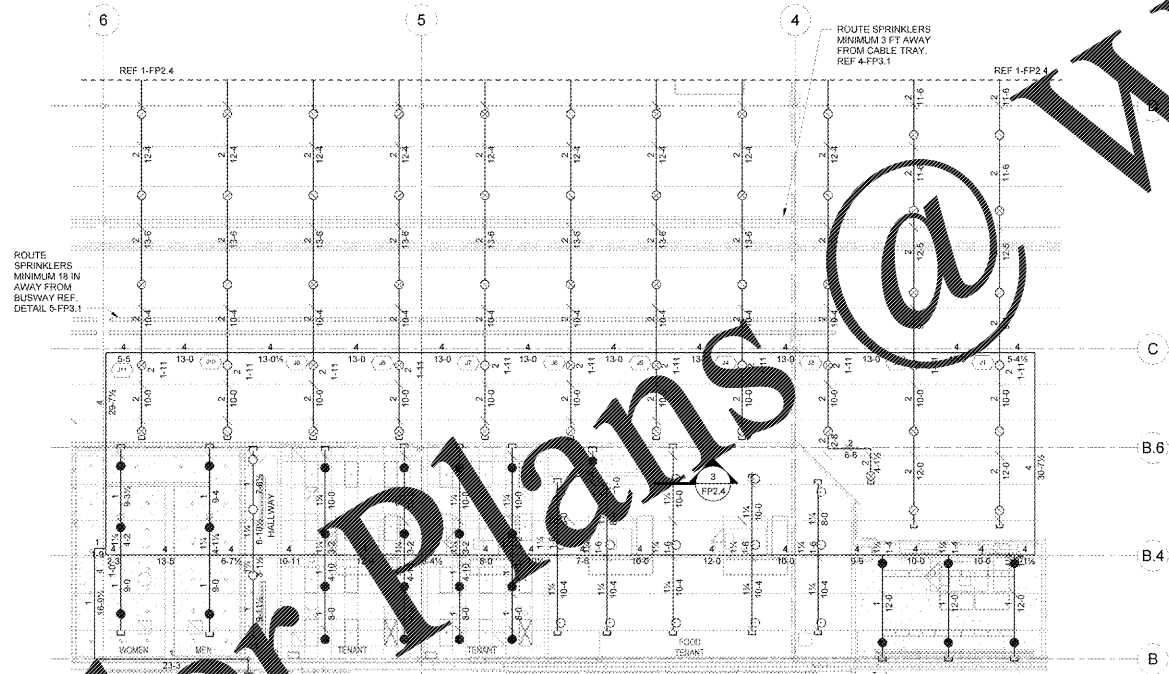


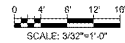
CONTRACTOR TO INSTALL SPRINKLERS IN SPECIFIED AREAS TO ALLOW FOR THE EASY ADDITION OF RECESSED PENDENT SPRINKLERS WHEN CEILING IS ADDED IN UNFINISHED TENANT SPACES. ADDING DROPS AND RECESSED SPRINKLERS IS NOT PART OF THIS SCOPE OF WORK.



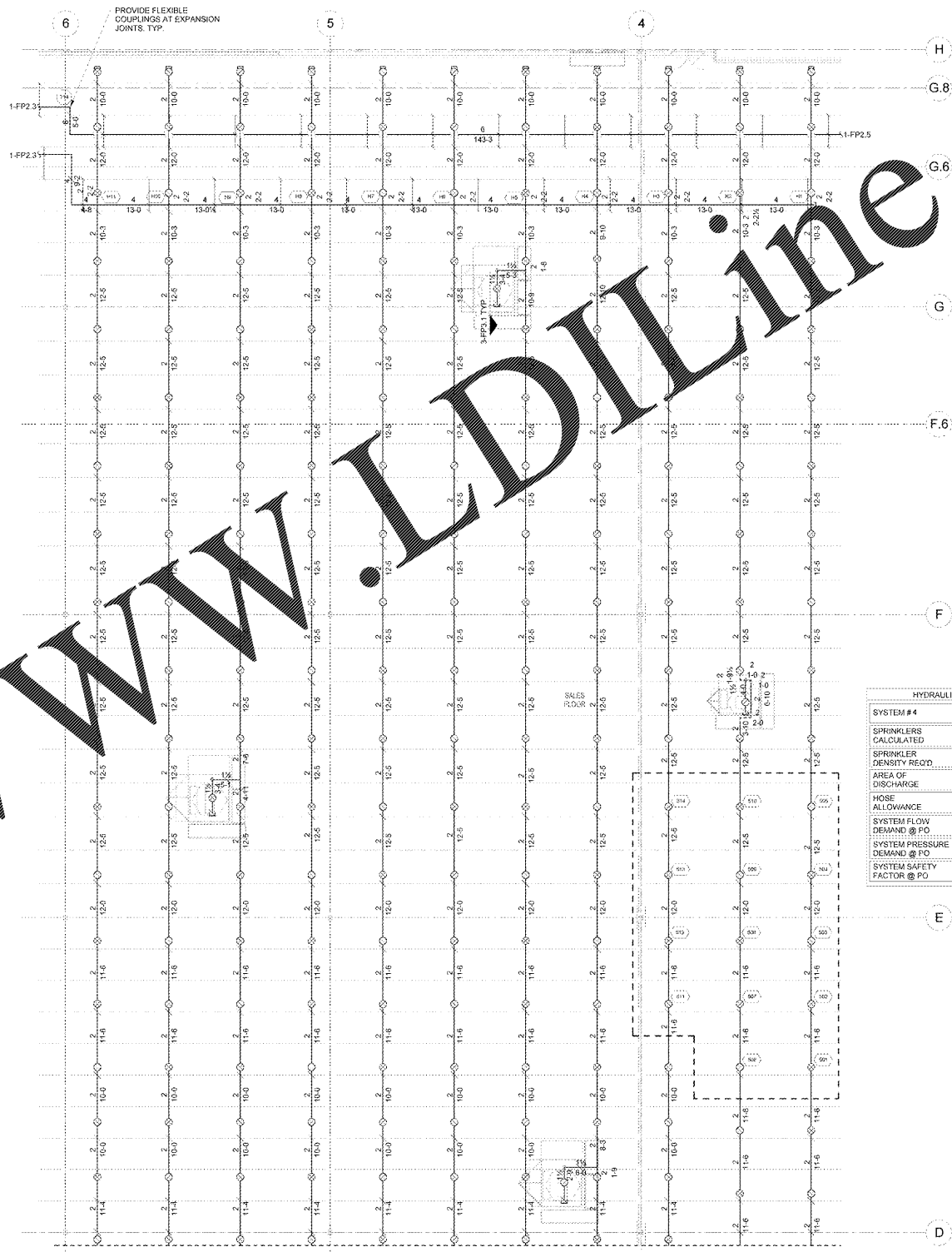
③ UNFINISHED TENANT SPRINKLER
3/4" = 1'-0"



② SPRINKLER PLAN SYSTEM 4
3/32" = 1'-0"



APPROVED INSPECTOR'S STAMP/UTILITY DRAWN LOCATION: REF 5-FP3
NOTE: REF 1-FP3.1 FOR INSTALLATION OF SPRINKLER PIPE SUPPORT

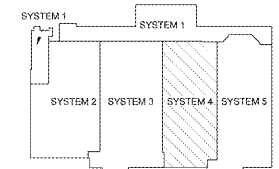


① SPRINKLER PLAN SYSTEM 4
3/32" = 1'-0"



NOTE: REF 1-FP3.1 FOR INSTALLATION OF SPRINKLER PIPE SUPPORT

HYDRAULIC DESIGN	
SYSTEM # 4	AREA #5 SALES FLOOR
SPRINKLERS CALCULATED	14 SPRINKLERS
SPRINKLER DENSITY REQ'D	0.425 GPM/SQ FT
AREA OF DISCHARGE	2000 SQ FT
HOSE ALLOWANCE	500 GPM
SYSTEM FLOW DEMAND @ PO	1549.31 GPM
SYSTEM PRESSURE DEMAND @ PO	108.39 PSI
SYSTEM SAFETY FACTOR @ PO	23.38 PSI



KEY PLAN

FIRE SPRINKLER PLAN SYSTEM 4

SHEET: FP2.4

BID SET NOT FOR CONSTRUCTION

CHECKED BY: ERP
DRAWN BY: REI
FILE NAME: FP2.4
PROTO CYCLE: 9586
DOCUMENT DATE: 09/13/17

ISSUE BLOCK
11/30/17 OTB

Walmart
LEESBURG, VIRGINIA
STORE NO.: 1904
JOB NUMBER: 11090261
PROT: 042817

CONSULTANTS
Rick's, Inc.
10000 WOODLARK ROAD
ROSELAND, NJ 07068
PHONE: 908-988-1100
WWW.RICKSINC.COM

RETAL DESIGN COLLABORATIVE
10000 WOODLARK ROAD
ROSELAND, NJ 07068
PHONE: 908-988-1100
WWW.RICKSINC.COM