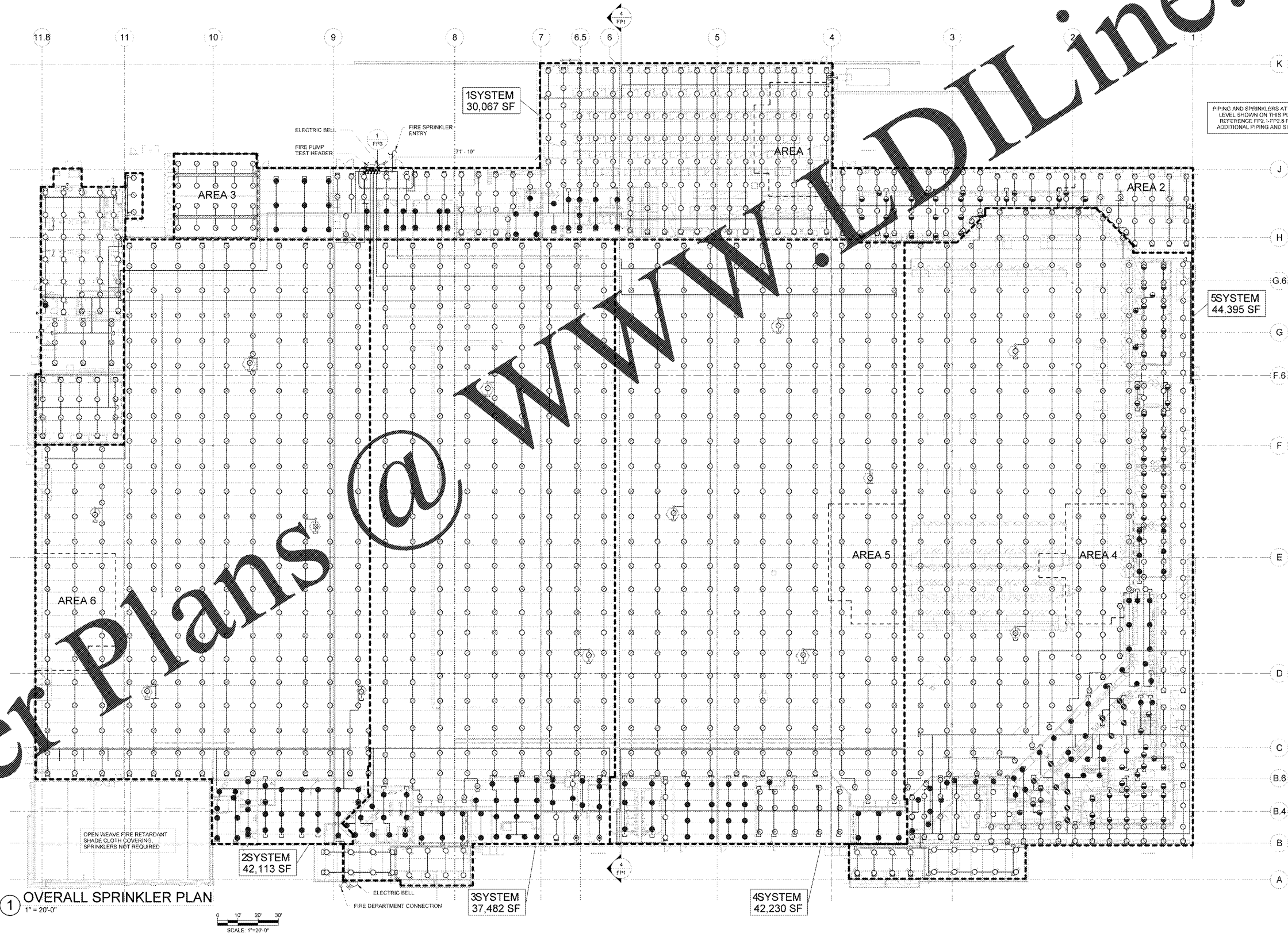


PROTECTION CRITERIA BASED ON 2010 NFPA 13

OCCUPANCY CLASSIFICATION	DENSITY	HOSE ALLOWANCE (LFM)	MAXIMUM SPRINKLER SPACING (SQ FT)	DESIGN BASIS
SALES FLOOR AND TIRE AND LUBE CUSTOMER SERVICE (MISCELLANEOUS STORAGE)	0.425/2000 SQ FT	500	185	CLASS I-IV ON SHELF TO 12'-0"; 13-TABLE 13.2.1, OWNER-ELECTED DENSITY
CORRIDORS/TENANT SPACES/INGROCERY PREP/FOOD TENANT/OFFICES (MISCELLANEOUS STORAGE)	0.20/1500 SQ FT	250	130	CLASS I-IV TO 5'-0"; 13-TABLE 13.2.1
OGP STORAGE (RACK STORAGE)	0.38/2000 SQ FT	500	100	CLASS I-IV TO 15'-0"; NONENCAPSULATED, CEILING SPRINKLERS ONLY; 13-FIGURE 16.2.1.3.2(a) CURVE G, FIGURE 16.2.1.3.4.1 4 FT AISLES, HIGH TEMP SPRINKLERS
STOCK ROOM/RECEIVING AREA (RACK STORAGE)	0.60/2000 SQ FT	500	100	CLASS I-IV TO 15'-0"; NONENCAPSULATED, CEILING SPRINKLERS ONLY; 13-FIGURE 16.2.1.3.2(b) CURVE G, FIGURE 16.2.1.3.4.1 4 FT AISLES, HIGH TEMP SPRINKLERS, OWNER-ELECTED DENSITY
RESTROOMS/BREAKROOMS (LIGHT HAZARD)	0.10/1500 SQ FT	100	225	LIGHT HAZARD; 13-11.2.3.1.1 AND TABLE 11.2.3.1.2
ENTRY VESTIBULES (ORDINARY HAZARD GROUP 2)	MINIMUM 0.20/1500 SQ FT OR ENTIRE AREA	250	130	ORDINARY HAZARD GROUP 2 (NO STORAGE); 13-11.2.3.1.1 AND TABLE 11.2.3.1.2
COOLERS/FREEZERS (MISCELLANEOUS STORAGE)	MINIMUM 0.20/1500 SQ FT OR ENTIRE AREA	250	130	CLASS I-III TO 12'-0" ON SINGLE ROW RACK; 13-TABLE 13.2.1
ENVIRONMENTAL CAGE (RUBBER TIRE STORAGE)	MINIMUM 0.18/2000 SQ FT OR ENTIRE AREA	250	255	RUBBER TIRES TO 5'-0"; ON GRADE, ON TREAD AND ON SIDE; 13-TABLE 18.4(a)
GARDEN CENTER/SEASONAL AREA (MISCELLANEOUS STORAGE)	0.425/2000 SQ FT	500	166	CLASS I-IV ON SHELF TO 12'-0"; 13-TABLE 13.2.1, OWNER-ELECTED DENSITY
TIRE STORAGE AREA (RUBBER TIRE STORAGE)	0.60/3000 SQ FT OR ENTIRE AREA	750	100	RUBBER TIRES TO 10'-0"; ON-TREAD ON FIXED RACKS WITHOUT SOLID SHELVES; 13-18.3(1) AND TABLE 18.4(b), HIGH TEMP SPRINKLERS
LUBE AND TIRE MOUNTING AREA (ORDINARY HAZARD GROUP 2)	0.20/1500 SQ FT	250	130	ORDINARY HAZARD GROUP 2 (NO STORAGE); 13-11.2.3.1.1 AND TABLE 11.2.3.1.2

SPRINKLER SYMBOL LEGEND		SYMBOL	SIZE	MFR	MAKE	S.I.N.	FINISH	STYLE	TEMP	K-FACTOR	SYS 1	SYS 2	SYS 3	SYS 4	SYS 5	TOTAL
TOTAL SPRINKLERS REQUIRED:		1862	1"	TYCO	EC-25	TY9128	BRASS	UPRIGHT	214	25.2	9	283	224	269	203	988
SYMBOL	DESCRIPTION	3/4"	VIKING	ELO	W550	BRASS	UPRIGHT	250	16.8	289	---	---	---	---	116	407
○	HYDRAULIC REFERENCE NODE POINT	3/4"	TYCO	TY-B	TY4151	BRASS	UPRIGHT	200	8.0	---	---	---	3	19	3	25
○	CAP	3/4"	TYCO	TY-B	TY4151	BRASS	UPRIGHT	266	8.0	31	---	---	---	---	18	65
●	RISE R NIPPLE/DROP NIPPLE	1/2"	TYCO	TY-FRB	TY323	WHITE	RECESSED STYLE 10	155	5.6	37	31	42	29	49	49	188
⊕	SPRINKLER RISER	1/2"	TYCO	TY-FRB	TY323	WHITE	RECESSED STYLE 10	156	5.6	---	---	---	---	---	5	5
○	INSPECTOR'S TEST/AUXILIARY DRAIN	1/2"	TYCO	TY-FRB	TY323	WHITE	RECESSED STYLE 10	286	5.6	---	---	---	---	---	11	11
∨	HANGER	1/2"	TYCO	TY-B	TY3351	BRASS	HSW	200	5.6	3	---	---	---	---	---	3
∨	TRAPEZE HANGER PERPENDICULAR TO JOIST	1"	TYCO	DS-3	TY5330	WHITE	HSW	200	11.2	3	---	---	---	---	---	3
∨	TRAPEZE HANGER PARALLEL TO JOIST	1"	TYCO	DS-C	TY3555	WHITE	CONCEAL	200	5.6	26	---	---	---	---	---	50

CONTRACTOR MAY SUBSTITUTE SPRINKLERS OF SAME SIZE, K-FACTOR AND TEMPERATURE CLASSIFICATION UNLESS PROHIBITED BY THE SPECIFICATIONS.



1 OVERALL SPRINKLER PLAN
1" = 20'-0"

SCALE: 1" = 20'-0"

PIPING AND SPRINKLERS AT ROOF LEVEL SHOWN ON THIS PLAN. REFERENCE FP2.1-FP2.5 FOR ADDITIONAL PIPING AND SIZING.

5SYSTEM
44,395 SF

2SYSTEM
42,113 SF

3SYSTEM
37,482 SF

4SYSTEM
42,230 SF

RETAIL DESIGN COLLABORATIVE

CONSULTANTS
RICKY J. LINDL
FIRE ENGINEER
11000 261
PROVIDED BY THE CLIENT

Walmart
LEESBURG, VIRGINIA
STORE NO. 1904
11000 261
JOB NUMBER: 0428917

ISSUE BLOCK
11/30/17 : OTB

CHECKED BY: ERP
DRAWN BY: REI
FILE NAME: FP2
PROTO CYCLE: 19585
DOCUMENT DATE: 09/13/17

BID SET NOT FOR CONSTRUCTION

OVERALL FIRE SPRINKLER PLAN

SHEET: FP2