

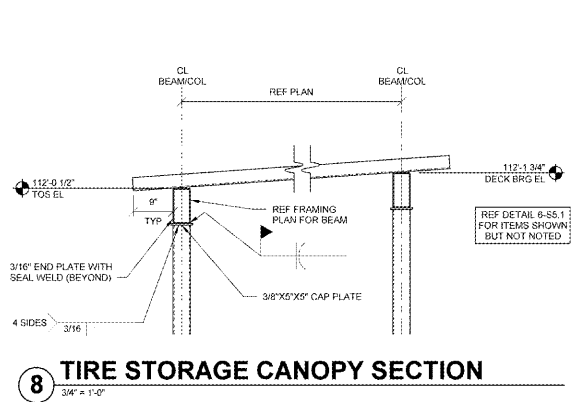
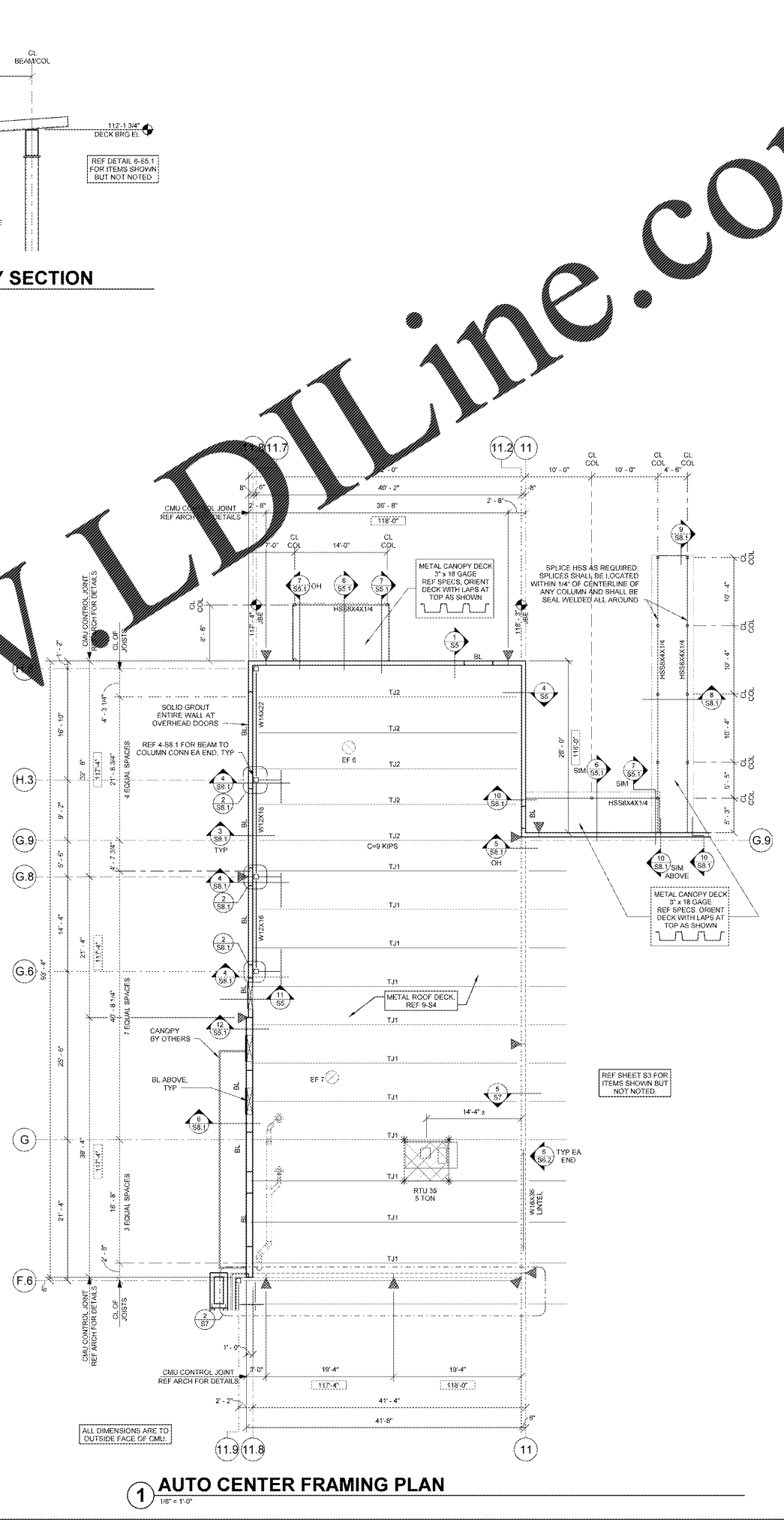
**ISSUE BLOCK**

OTB	11/30/17

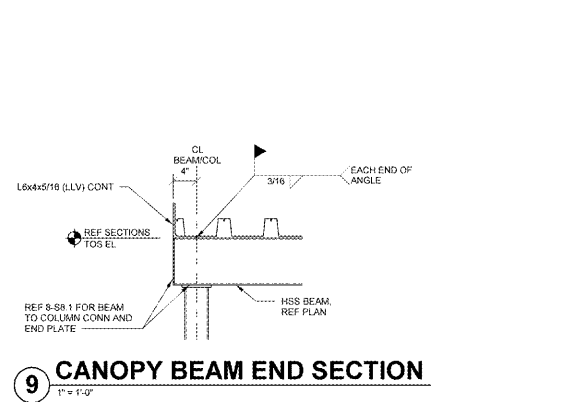
CHECKED BY: BCB  
DRAWN BY: BWN  
PROTO CYCLE: 0428/17  
DOCUMENT DATE: 09/13/17  
JBA PROJECT NO: 96601904R

**BID SET  
NOT FOR  
CONSTRUCTION**

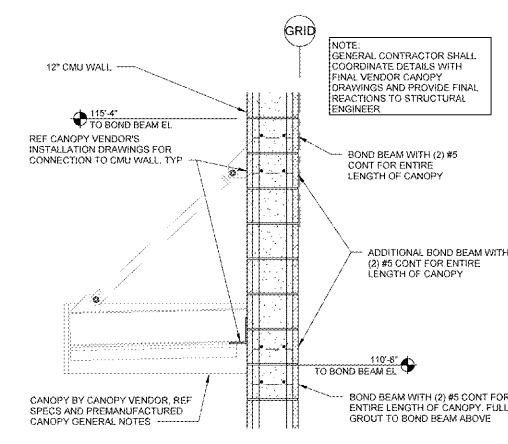
**AUTO  
CENTER  
FRAMING  
PLAN AND  
DETAILS**



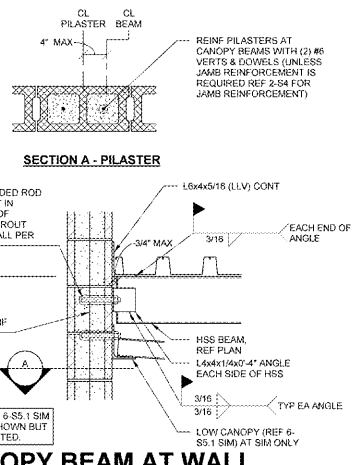
**8 TIRE STORAGE CANOPY SECTION**  
3/4" = 1'-0"



**9 CANOPY BEAM END SECTION**  
1" = 1'-0"

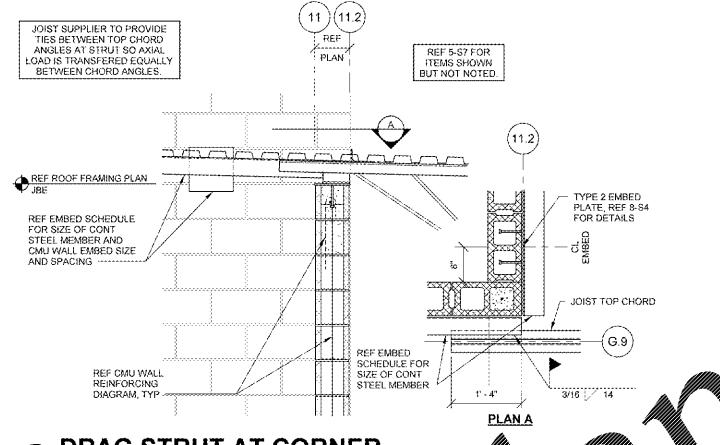


**6 ENTRY CANOPY SECTION**  
3/4" = 1'-0"

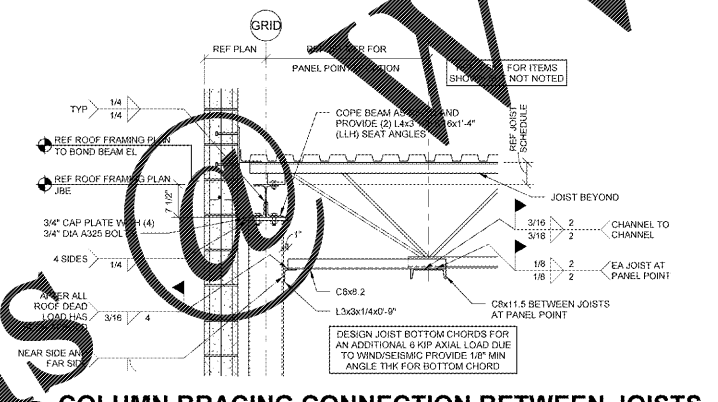


**10 CANOPY BEAM AT WALL**  
1" = 1'-0"

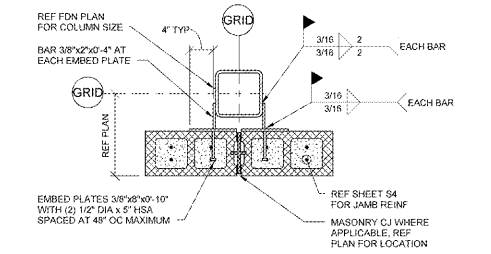
**7 NOT USED**  
NTS



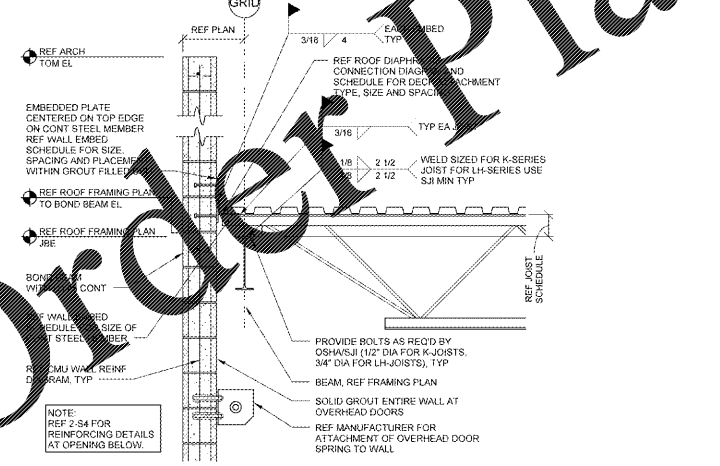
**5 DRAG STRUT AT CORNER**  
3/4" = 1'-0"



**4 COLUMN BRACING CONNECTION BETWEEN JOISTS**  
3/4" = 1'-0"



**2 COLUMN/PILASTER CONNECTION**  
1" = 1'-0"



**3 SIDE WALL AT OVERHEAD DOORS**  
3/4" = 1'-0"

Order Plans @ [www.LDOnline.com](http://www.LDOnline.com)