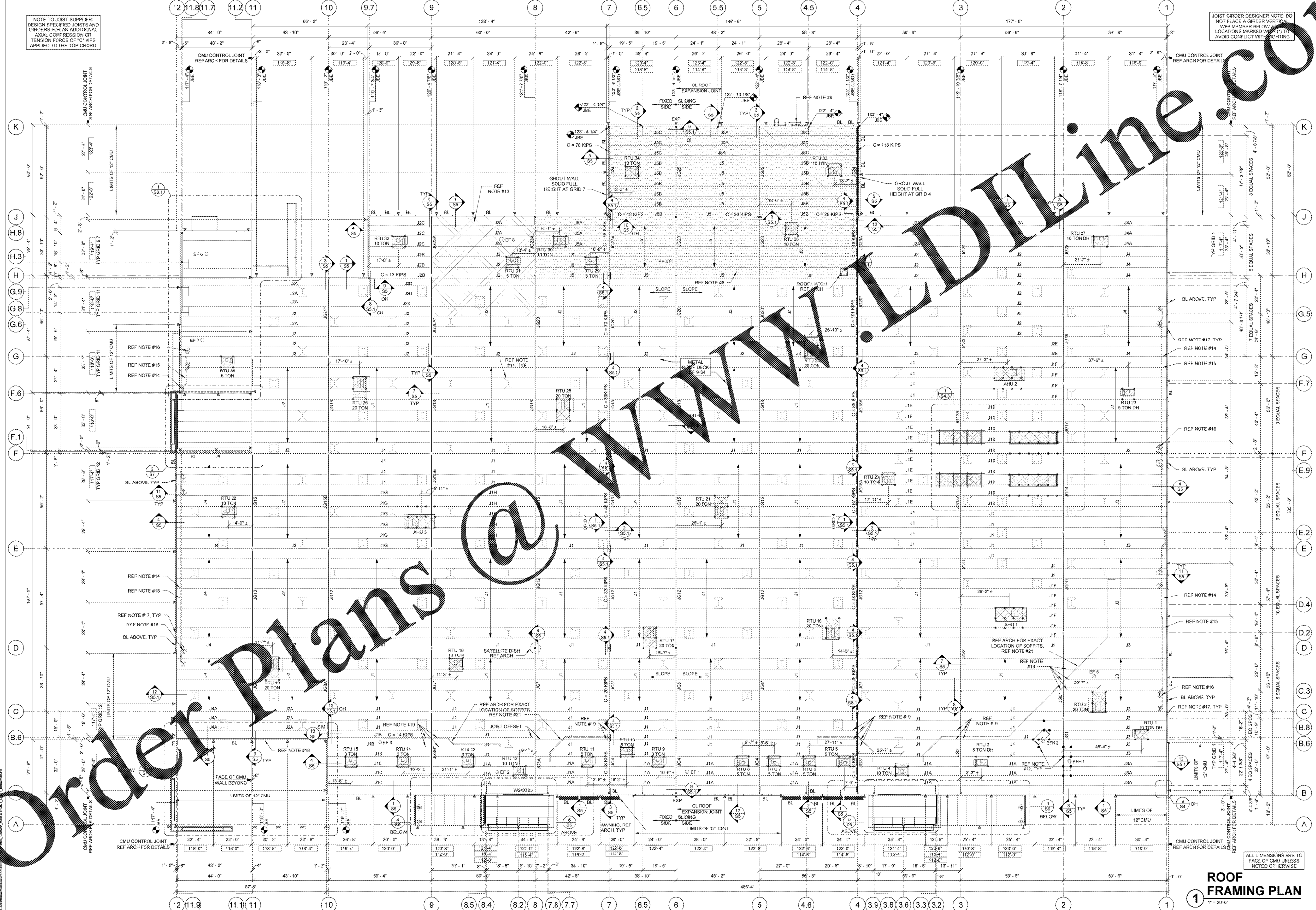


FRAMING PLAN SHEET NOTES

- REFER TO SHEETS 80, 84 AND 84.1 FOR GENERAL NOTES AND DESIGN CRITERIA.
- NOTE TO GENERAL CONTRACTOR: REFER TO SECTION 0510 OF THE CONTRACT SPECIFICATIONS FOR OWNER SUPPLIED STRUCTURAL STEEL. ALL OTHER STRUCTURAL AND MISCELLANEOUS STEEL NOT PROVIDED UNDER SECTION 0510 SHALL BE PROVIDED BY THE GENERAL CONTRACTOR AS NOTED IN SECTION 0550 OF THE SPECIFICATIONS.
- "BL" DENOTES CMU BLOCK Lintel. REFER TO CMU Lintel SCHEDULE (2-54) FOR SIZE AND REINFORCEMENT.
- NOTE TO JOIST MANUFACTURER: PROVIDE STANDARD BRIDGING COMPLYING WITH THE APPLICABLE STEEL JOIST INSTITUTE SPECIFICATIONS TYPICAL FOR GRAVITY AND UPLIFT LOADS SUPERIMPOSED ON ALL JOISTS. DIAGONAL BRIDGING SHALL BE PROVIDED BETWEEN ADJACENT JOISTS WHENEVER BOTTOM CHORD HORIZONTAL BRIDGING IS DISCONTINUOUS. DO NOT LOCATE BRIDGING BELOW SKYLIGHTS WHERE POSSIBLE.
- DESIGN JOIST FOR AN ADDITIONAL CONCENTRATED LOAD APPLIED TO THE TOP CHORD WHERE SHOWN BY THE "CA" ROOF FRAMING PLAN. REF JOIST SCHEDULE NOTES AND RTU SUPPORT FRAMING PLAN FOR ROOF LOADS AND DIMENSIONS. JOIST REINFORCEMENT PER 5-54.1 APPLIES.
- FRAMING IN SHADDED AREA IS DESIGNED FOR 10 KIP COLLATERAL LOAD IN ADDITION TO ROOF LIVE LOAD SPECIFIED BY CODE FOR WEIGHT OF MERCHANDISE SUSPENDED FROM BOTTOM CHORD OF JOIST. JOIST REINFORCEMENT PER 5-54.1 APPLIES.
- REFER TO JOIST SCHEDULE NOTES AND RTU FRAMING PLAN FOR RTU AND AHU JOIST LOADS AND DIMENSIONS.
- REF ROOF DIAPHRAGM CONNECTION DETAIL 9-54 FOR DECK ATTACHMENT TO ROOF FRAMING MEMBERS AND DECK FASTENER TYPE, SIZE AND SPACING.
- JIB CRANE AND RAILING ASSEMBLY FURNISHED BY OWNER. REF ARCH FOR LOCATION. REF SECTIONS 4-54, 5-54, 6-54 AND 7-54.3 FOR CONNECTIONS AND ADDITIONAL WALL REINFORCEMENT.
- DIMENSIONS LOCATING THE RTUS, AHUS AND HYBRID HOUSES WITH A (H) ARE APPROXIMATE AND CONTRACTOR MAY ADJUST LOCATION OF CURBS TO THE NEAREST JOIST PANEL POINTS (MAXIMUM ALLOWED MOVEMENT IS 8"). CURBS SHALL NOT BE SHIFTED IF IT CAUSES A CONFLICT WITH PENETRATIONS. IF CURB EDGES OR HEADERS ARE NOT WITHIN 3" OF A JOIST PANEL POINT, REINFORCE JOIST PER DETAIL 5-54.1.
- REF ARCH SHEET 4 FOR EXACT QUANTITIES AND LOCATIONS OF SKYLIGHTS.
- DESIGN JOIST FOR ADDITIONAL 200 LB CONCENTRATED LOAD FOR EXHAUST HOOD. THE JOIST CHORD SHALL BE DESIGNED FOR BENDING BETWEEN PANEL POINTS DUE TO THE CONCENTRATED LOAD. JOIST REINFORCEMENT PER 5-54.1 DOES NOT APPLY.
- DESIGN JOISTS IN HATCHED AREA FOR (5) 200 LB POINT LOADS APPLIED TO THE TOP CHORD SPACED AT 3" OC AT ANY POINT ON THE JOIST. REF DETAIL 5-54.1 FOR JOIST REINFORCEMENT AS REQUIRED.
- JOISTS PERPENDICULAR TO ROOF LATERAL DRAM LINES SHALL BE DESIGNED TO SUPPORT AN ADDITIONAL CONCENTRATED LOAD OF 550 LBS AT EACH LOCATION THE DRAIN LINE INTERSECTS THE JOIST. THE JOIST TOP CHORD SHALL BE DESIGNED FOR BENDING BETWEEN PANEL POINTS FROM THIS CONCENTRATED LOAD. THE JOIST PROFILE SHALL BE UNRESTRICTED AT DRAIN SUPPORT LOCATION TO ALLOW FOR INSTALLATION OF PLUMBING SUPPORT FRAMING. JOIST SUPPLIER SHALL NOT LOCATE ADDITIONAL WEBS AT DRAIN SUPPORT LOCATIONS. FIELD REINFORCEMENT PER DETAIL 5-54.1 DOES NOT APPLY.
- (CONT.) JOISTS PARALLEL TO ROOF LATERAL DRAM LINES SHALL BE DESIGNED TO SUPPORT AN ADDITIONAL LOAD OF 70 LBS APPLIED TO THE TOP CHORD. CONTRACTOR SHALL INSTALL FIELD REINFORCEMENT PER DETAIL 5-54.1 AS REQUIRED. DRAIN AND DOWNSPOUT SIZES AND LOCATIONS PER DRAWINGS SP1, M AND P1.
- DRAINLINE SHALL BE SUPPORTED FROM THE TOP CHORD OF THE JOISTS THAT HAVE BEEN DESIGNED FOR THE ADDITIONAL LOAD. TYP.
- PROVIDE FIELD FABRICATED FRAMES PER GENERAL NOTE 4.7 AT ALL ROOF DRAIN OPENINGS. TYP.
- REF ARCH FOR SCUPPER OPENING LOCATIONS. REF 2-54 FOR OPENING REINFORCEMENT AND DETAILS.
- SUGGESTED LOCATION OF TEMPORARY TRUCK ENTRANCE FOR SLAB PLACEMENT. REF DETAIL 6-52.2 FOR TEMPORARY WALL OPENING DETAILS.
- PROVIDE JOIST BOTTOM CHORD EXTENSION AND WEBS AS REQUIRED FOR SUPPORT OF SOFFIT FRAMING.
- NOT USED.
- DESIGN JOISTS FOR WEIGHT OF BULKHEAD AT 65 PLF. WHERE BULKHEAD IS DIAGONAL OR PERPENDICULAR TO JOISTS, DESIGN BOTTOM CHORD FOR BENDING BETWEEN PANEL POINTS FOR THE CONCENTRATED LOAD. JOIST REINFORCEMENT PER 5-54.1 DOES NOT APPLY.

NOTE TO JOIST SUPPLIER: DESIGN SPECIFIED JOISTS AND GRIDDERS FOR AN ADDITIONAL AXIAL COMPRESSION OR TENSION FORCE OF "K" KIPS APPLIED TO THE TOP CHORD

JOIST GIRDER DESIGNER NOTE: DO NOT PLACE A GIRDER VERTICAL WEB MEMBER BELOW THE JOIST LOCATIONS MARKED WITH "T" TO AVOID CONFLICT WITH LIGHTING



Order Plans @ Walmart.com



ISSUE BLOCK	
OTB	11/30/17

CHECKED BY: BCB
 DRAWN BY: BWN
 PROTO CYCLE: 04/28/17
 DOCUMENT DATE: 09/13/17
 JBA PROJECT NO: 96601904R

**BID SET
NOT FOR
CONSTRUCTION**

**ROOF
FRAMING
PLAN**

SHEET: **S3**

1 ROOF FRAMING PLAN
1" = 20'-0"