

LIGHT FIXTURE SCHEDULE						
TYPE	VOLTS	WATTS	LAMPS	ORDER NUMBER	QTY	DESCRIPTION
10	120	76	F32T8/TL86W/PLUS/ALTO	2	RECESSED	2 X 4 TROFFER
16	120	4	INTEGRAL LED	1	WALL	EXIT SIGN (SINGLE FACE)
17	120	6	12V, 8W SEALED HALOGEN	2	WALL	EMERGENCY LIGHT
27	120	3	12V, 10W SEALED HALOGEN	2	WALL	EMERGENCY LIGHT - REMOTE HEADS

NOTE: ALL FIXTURES AND LAMPS ARE FURNISHED BY THE OWNER FOR INSTALLATION BY THE CONTRACTOR UNLESS NOTED OTHERWISE ON THE DRAWINGS

SUBWAY EQUIPMENT SCHEDULE									
NO.	Description	Manufacturer	Model	VOLT/PHASE	INPUT VA	AMPS	TERMINATION	MTG. HT.	NOTES
K07	SODA STORAGE	COKE	1201	120/1	360 VA	0.05 A	2" GFI DUPLEX, NEMA 5-20R	46"	2
K12	RAPID COOK OVEN	TURBOCHEF TECH	TORNADO	208/1	5990 VA	0.03 A	RECEPTACLE, NEMA 5-30R	44"	-
K14	MICROWAVE	AMANA / SHARP	SFS12SW2	120/1	2000 VA	0.09 A	GFI DUPLEX, NEMA 5-20R	44"	-
K17A	28" HOT FOOD UNIT	DUKE MANUFACTURING	---	120/1	500 VA	0.05 A	JUNCTION BOX	12"	-
K17B	60" COLD FOOD UNIT	DUKE MANUFACTURING	---	120/1	645 VA	7.50 A	JUNCTION BOX	12"	-
K17C	61" CASH UNIT	DUKE MANUFACTURING	---	120/1	500 VA	0.05 A	JUNCTION BOX	12"	-
K19	POS SYSTEM	MICROS SYSTEMS	SUBSHOP 2000	120/1	180 VA	0.08 A	JUNCTION BOX	12"	-
K25	SODA MACHINE	COKE	1201	120/1	420 VA	3.50 A	GFI DUPLEX, NEMA 5-20R	20"	2
K25A	ICE MACHINE	ICE-O-MATIC/MANTOVAC	400H480 OR 500	120/1	1738 VA	14.80 A	GFI DUPLEX, NEMA 5-20R	44"	-
K28A	COFFEE BREWER	LANCER	FBD 5530	208/1	3952 VA	19.00 A	RECEPTACLE, NEMA 1-5-30R	44"	2
K43	1 DR BEVERAGE DISPLAY REFRIGERATOR	TRUE	GEM-26	120/1	864 VA	7.20 A	GFI DUPLEX, NEMA 5-20R	20"	-
K46	COFFEE BREWER	---	---	120/1	1690 VA	14.00 A	GFI DUPLEX, NEMA 5-20R	20"	-
K75	1" REFRIGERATED BACK COUNTER	DUKE MANUFACTURING	RBC-60	120/1	720 VA	6.00 A	GFI DUPLEX, NEMA 5-20R	20"	-
K82	BREAD OVEN / PROOFER	NLUVU	NVT - 3V	208/3	7666 VA	21.00 A	JUNCTION BOX	72"	-
M01A	WALK-IN COOLER	NORLAKE	KLF7756-CR-SUB	208/1	1780 VA	8.80 A	RECEPTACLE, NEMA 6-20R	102"	-
M02	WALK-IN FREEZER	NORLAKE	KLB7768-CL-SUB	208/1	1580 VA	7.50 A	RECEPTACLE, NEMA 6-20R	102"	-
M03	2" X 4" MENU BOARD WITH LIGHTING	VISITRANSLITE SONOMA	---	120/1	180 VA	1.10 A	RECEPTACLE, NEMA 5-20R	86"	-
M03B	2" X 2" MENU BOARD WITH LIGHTING	VISITRANSLITE SONOMA	---	120/1	180 VA	0.55 A	RECEPTACLE, NEMA 5-20R	86"	-

LFS PANELBOARD													
DESCRIPTION		WIRE	BRKR	PL	A	B	C	PL	BRKR	WIRE	DESCRIPTION		
1	K82 BREAD OVEN / PROOFER (2)	#10	30 A	3	2.52	0.89		2	15 A		M01A WALK-IN COOLER	2	
2	210 A, 208V										8.6 A, 208V	4	
3	K12 RAPID COOK OVEN	#10	30 A	2	3.00	0.70		1	20 A		M01A COOLER LIGHTS (2)	6	
4	K14 MICROWAVE	#10	30 A	2	3.00	0.70		2	15 A		M02 WALK-IN FREEZER	8	
5	5990 W, 208V										7.5 A, 208V	10	
6	K17A 28" HOT FOOD UNIT	#10	30 A	2	1.90	0.86		1	20 A		M02 FREEZER LIGHTS (2)	12	
7	K17B 60" COLD FOOD UNIT	20 A	1					1	20 A		K17A FRONT COUNTER (2)	14	
8	K17C 61" CASH UNIT	20 A	1					1	20 A		K17B FRONT COUNTER (2)	16	
9	K19 POS SYSTEM	20 A	1					1	20 A		K17C FRONT COUNTER (2)	18	
10	K25 SODA MACHINE	20 A	1		0.54	0.18		1	20 A		K19 POS / K17C CASH UNIT (2)	20	
11	K25A ICE MACHINE	20 A	1					1	20 A		SLUWAY SIGN (2)	22	
12	BACKROOM RECEP	20 A	1					1	20 A		K17A FRONT COUNTER (2)	14	
13	K07 SODA STORAGE	20 A	1					1	20 A		K17B FRONT COUNTER (2)	16	
14	K28A COFFEE BREWER	20 A	1		0.00	0.00		1	20 A		K17C FRONT COUNTER (2)	18	
15	SPARE	20 A	1					1	20 A		SPARE	24	
16	SPARE	20 A	1					1	20 A		SPARE	26	
17	K25 SODA MACHINE	20 A	1		0.42	0.00		1	20 A		SPARE	28	
18	K25A ICE MACHINE	20 A	1					1	20 A		SPARE	30	
19	K46 COFFEE BREWER	20 A	1		1.68	0.00		1	20 A		SPARE	32	
20	BEVERAGE COUNTER RECPT	20 A	1			0.18	0.00	1	20 A		SPARE	34	
21	BEVERAGE COUNTER RECPT	20 A	1					1	20 A		SPARE	36	
22	K43 SODA REFRI	20 A	1		0.68	0.50		1	20 A		CEILING FANS	38	
23	INSECT CONTROL RECEP	20 A	1			0.36	0.55	1	20 A		DINING LIGHTING	40	
24	K46 COFFEE BREWER	20 A	1					1	20 A		BKRM/SERVICE LIGHTING	42	
TOTAL CONNECTED					13.89	12.11	13.64	KVA					
TOTAL LOAD					117.72	100.92	115.53	AMPS					
TOTAL LOAD					39.64		110.04	AMPS					
PER NEC ARTICLE 220 FEEDER LOAD					28.41		79.87	AMPS					

- ### PANELBOARD NOTES
- TERMINATE GROUND ON ISOLATED GROUND BUS.
 - INSTALL LOCKING DEVICE FURNISHED WITH PANELBOARD (LOCK-OFF FOR MAINTENANCE).
 - INSTALL LOCKING DEVICE FURNISHED WITH PANELBOARD (LOCK-ON FOR CRITICAL LOAD).
 - GFI BREAKER FOR PERSONNEL PROTECTION (5 mA).
 - GFI BREAKER FOR EQUIPMENT PROTECTION (30 mA).
 - CONDUCTOR SIZE HAS BEEN INCREASED FOR VOLTAGE DROP. SIZE EQUIPMENT GROUNDING CONDUCTOR PROPORTIONALLY PER NEC.
 - REFER TO ONE-LINE DIAGRAM FOR SERVICE FAULT CURRENT FOR INTERRUPTING.
 - REFER TO ONE-LINE DIAGRAM FOR WIRE SIZES.
 - FACTORY WIRE TO BE USED.
 - REFER TO SEE LIGHTING PLAN FOR WIRE SIZES.
 - THRU CONDUIT.
 - DESIGNATE "SMART" BREAKER.
- ### EQUIPMENT SCHEDULE NOTES
- PROVIDE CORD AND CORROSION RESISTANT PLUG, CONNECTOR AND WEATHERPROOF BOOTS.
 - PROVIDE MATCHING CORD AND PLUG.
 - WIRING DEVICE ON DROP CORD. REFERENCE DROP CORD DETAILS.
 - WIRING DEVICE CIRCUITED TO SHUNT TRIP BREAKER.
 - MOUNT JUNCTION BOX IN CEILING TIGHT TO COOLER BOX WALL AND CENTERED ON EQUIPMENT.
 - PROVIDE 6 FEET OF LIQUIDTIGHT FLEXIBLE METAL CONDUIT BETWEEN JUNCTION BOX AND EQUIPMENT TO FACILITATE MOVEMENT OF EQUIPMENT FOR CLEANING.
- ### KEYNOTES
- 16.221 SURFACE MOUNT JUNCTION BOX WITH BLANK COVER PLATE 8" ABOVE CEILING FOR SIGNAGE.
- 16.506 INSECT CONTROL: PROVIDE BROWN DEVICE AND MATCHING COVERPLATE AT 154"
- 16.661 DATA AND PHONE CONDUIT: PROVIDE CONDUIT SLEEVE THROUGH WALL AND ROUTE ABOVE BAR JOIST, UNLESS NOTED OTHERWISE. ROUTE CONDUIT TO THE TOP SIDE OF CABLE TRAY WITH THE CONDUIT CONNECTOR AND BUSHING EXTENDING NO MORE THAN 1" OVER CABLE TRAY.



STIPULATION FOR THE CONTRACTOR TO PROVIDE: THE CONTRACTOR SHALL BE RESPONSIBLE FOR OBTAINING ALL NECESSARY PERMITS AND APPROVALS FROM ALL APPLICABLE AGENCIES AND AUTHORITIES. THE CONTRACTOR SHALL BE RESPONSIBLE FOR OBTAINING ALL NECESSARY PERMITS AND APPROVALS FROM ALL APPLICABLE AGENCIES AND AUTHORITIES.

HENDERSON ENGINEERS
 CONSULTANTS
 1800 W. 17th St.
 Leesburg, VA 22075
 TEL: (703) 770-0222 FAX: (703) 770-0223
 WWW.HENDERSONENGINEERS.COM
 VA. CORPORATE ID: 040001357
 EXP. RES. 02/12/07

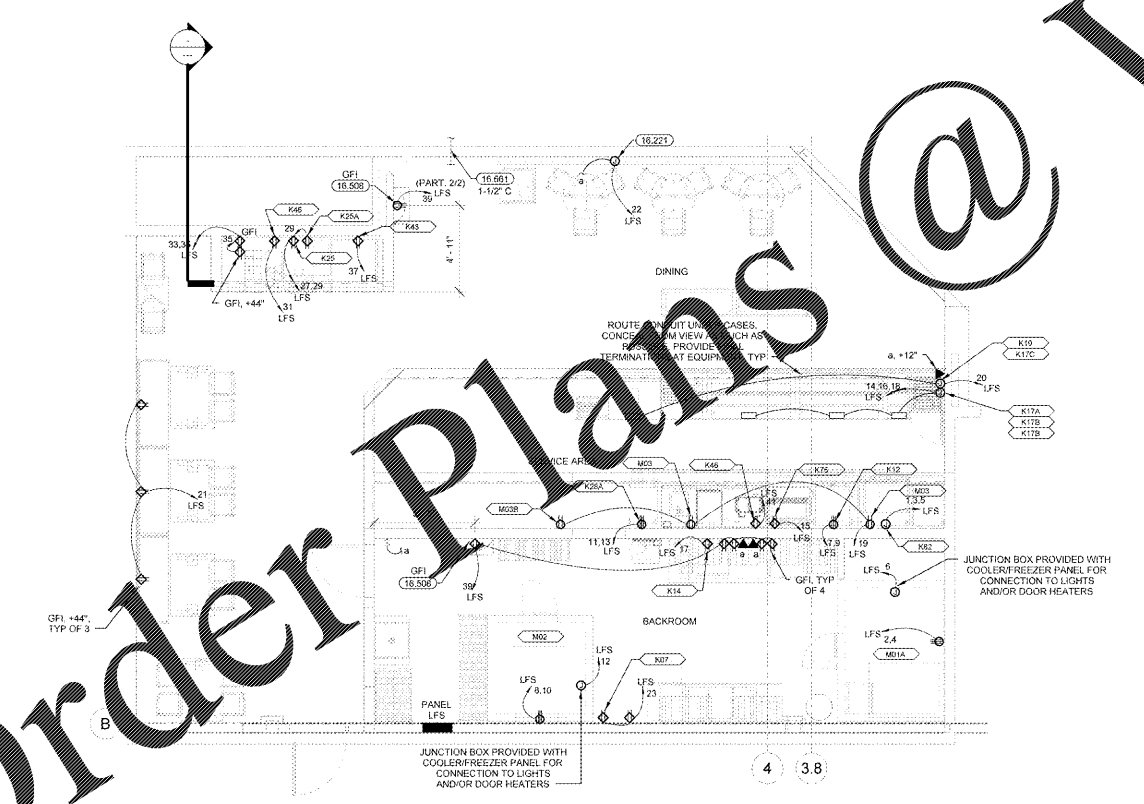
ISSUE BLOCK	
OTB	11/30/17

CHECKED BY:
 DRAWN BY:
 PROTO CYCLE:
 DOCUMENT DATE: 09/13/17

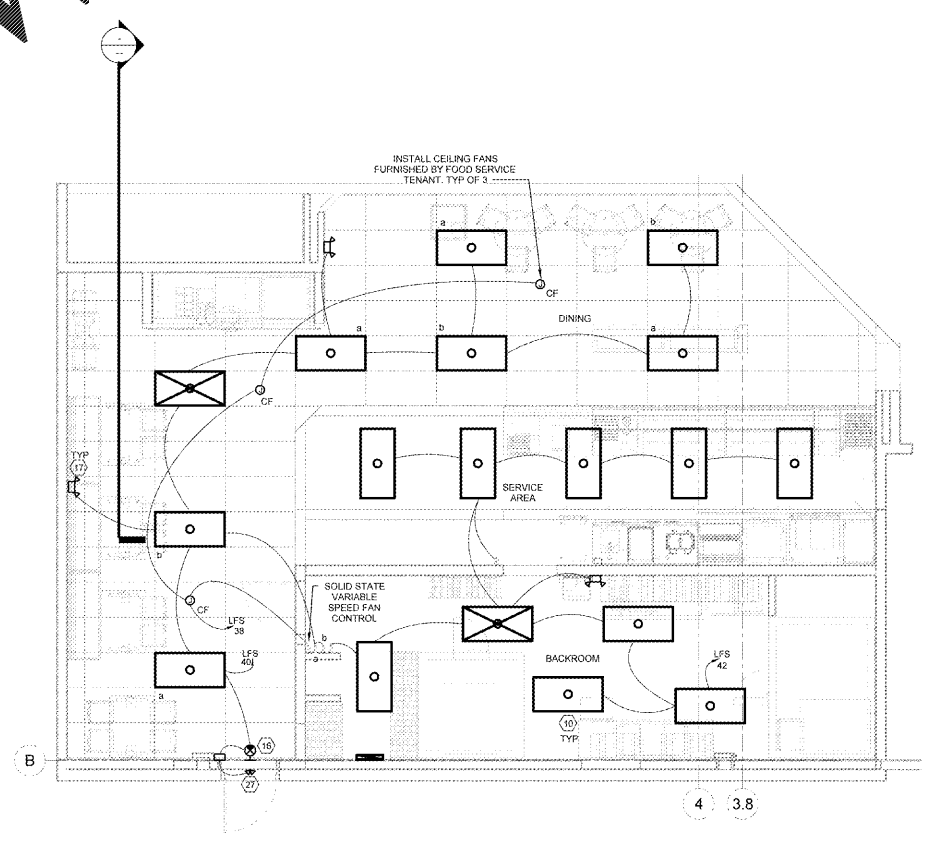
BID SET
 NOT FOR
 CONSTRUCTION

SUBWAY
 ELECTRICAL
 PLANS

SHEET:
SWE1



② SUBWAY POWER PLAN
 1/4" = 1'-0"



① SUBWAY LIGHTING PLAN
 1/4" = 1'-0"

NOTE:
 REFER TO SHEET SWAS FOR FOOD SERVICE
 TENANT AND WALMART RESPONSIBILITY
 SCHEDULE.

Order Plans @

WWW.LDILine.com

UNIVERSITY OF MARYLAND