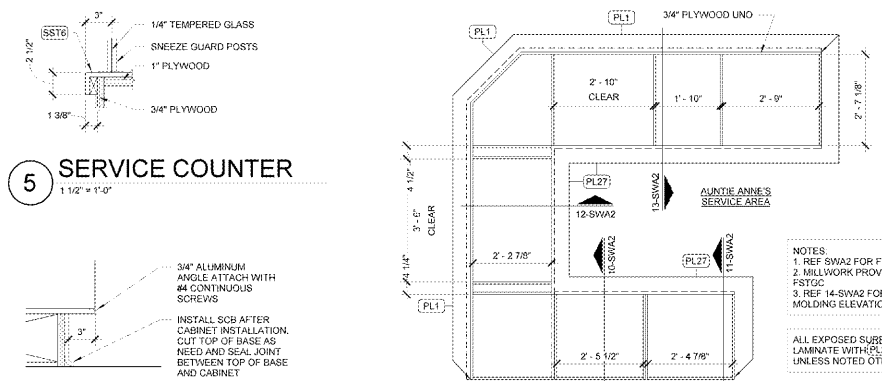


WMGC	WALMART GENERAL CONTRACTOR	KES	KITCHEN EQUIPMENT SYSTEMS (DOCTOR'S ASSOCIATES, INC. "DA")
FSTGC	FOOD SERVICE TENANT GENERAL CONTRACTOR	VM A&R	WALMART HIRED ARCHITECT OF RECORD
FSTDO	FOOD SERVICE TENANT OWNER/OPERATOR	VMTC	WALMART TELECO CONTRACTOR

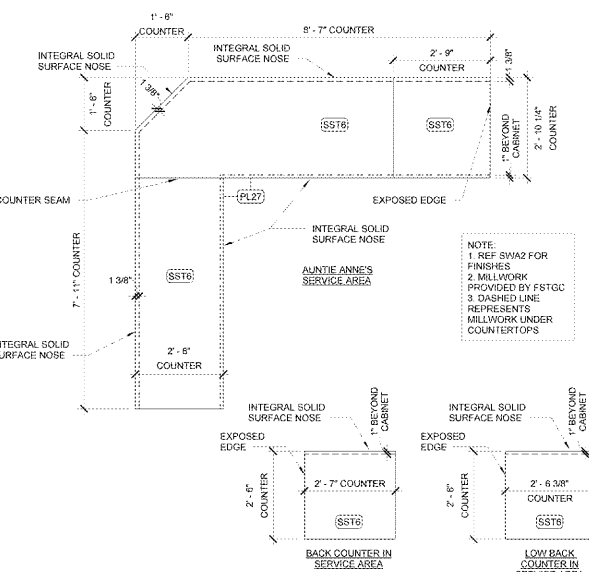
ABBREVIATION KEY



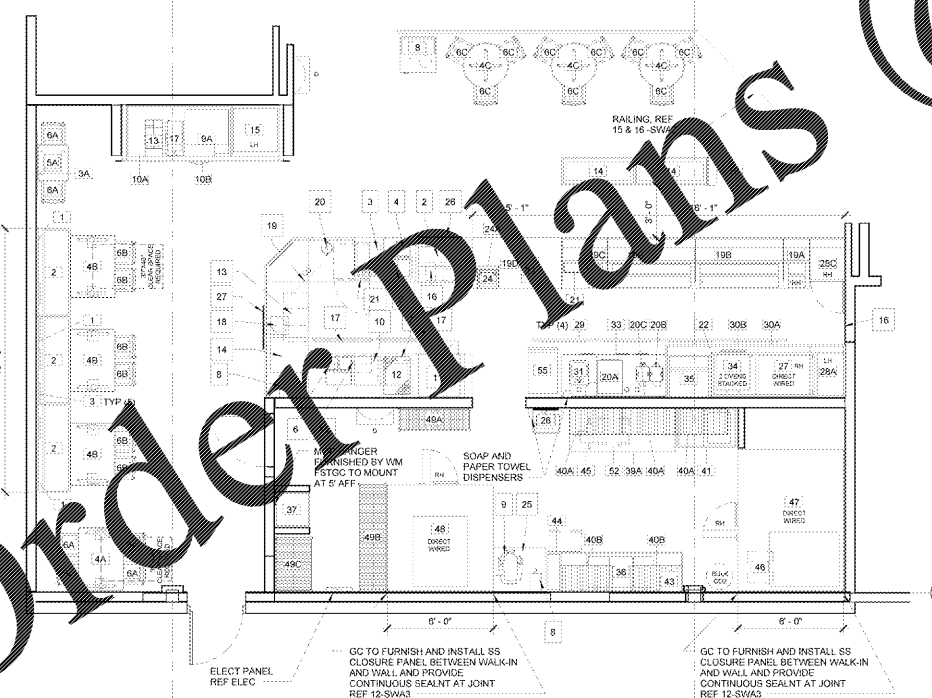
5 SERVICE COUNTER
1 1/2" = 1'-0"

4 BASE AT COUNTER
1 1/2" = 1'-0"

3A AUNTIE ANNE'S MILLWORK DETAIL
1/2" = 1'-0"

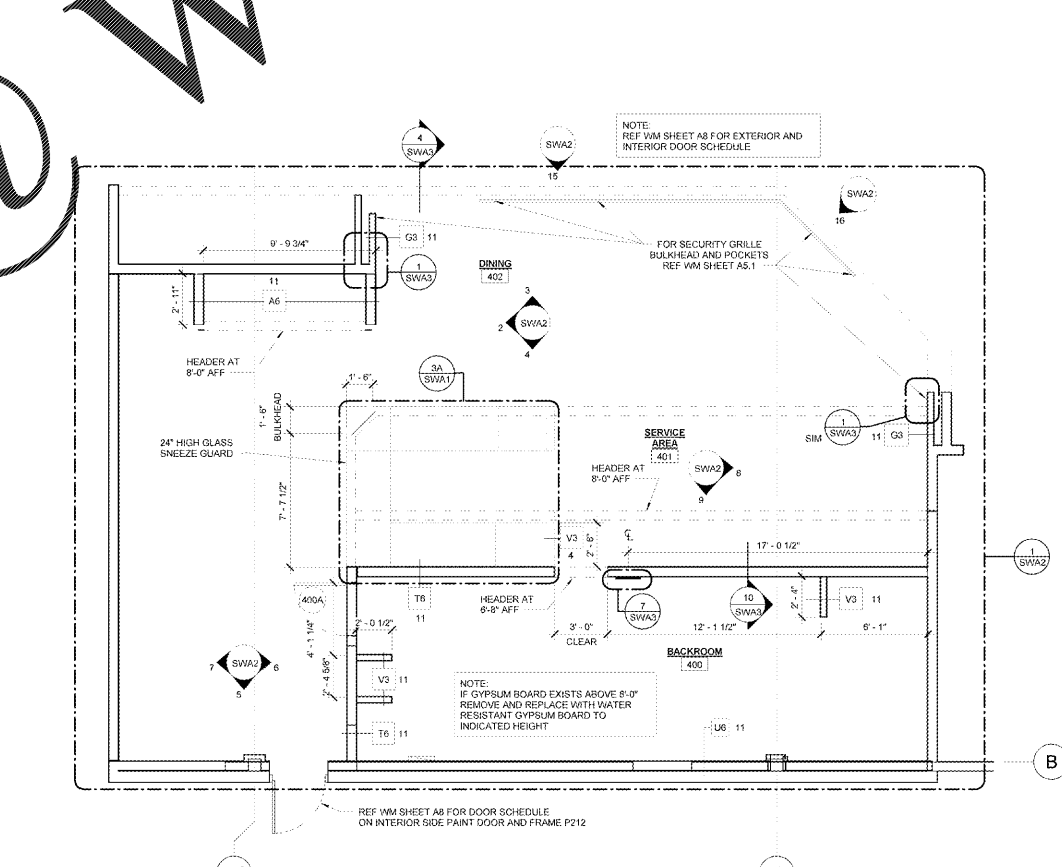


3 AUNTIE ANNE'S SERVICE COUNTERS
1/2" = 1'-0"



2 ENLARGED FIXTURE PLAN
1/4" = 1'-0"

#	Model	MFR	Ordered From	QTY	Description
1	WOOD PLANK FOGAL WALL	PLYMOLD	DAI	3	80" X 120" FAUX WOOD WALL PANEL WITH 1/8" ALUMINUM TRIM FINISHED WITH BEIGEWOOD LAMINATE (7850-60) MOUNTING HARDWARE BY PLYMOLD. INSTALLED BY FSTGC.
2	WALL BENCH	PLYMOLD	DAI	3	60" BENCH WITH 60" BACK PAD FOR MOUNTING ON WOOD PLANK FOGAL WALL. KWH #16-CHROMA AC-8-145 BACK PAD. CHOCOLATE UPHOLSTERED PAD AND SILVER FRAME. INSTALLED BY FSTGC.
3	WALL ARTS	VSG	DAI	5	CLEAR LAYERED ACRYLIC WALL ART PIECES INSTALLED ON WOOD PLANK FOGAL WALL. SPACED 8" APART.
3A	BRAND MESSAGING	VSG	DAI	1	TRUCK LASER CUT ACRYLIC LETTERS. LETTER PIN MOUNTED FLUSH TO WALL WITH NO EXPOSED FASTENERS. FINISHED WITH SUBWAY BRAND GREEN.
4A	30" X 42" X 30" TABLE	PLYMOLD	DAI	1	30" WIDTH X 42" LENGTH X 30" HEIGHT WITH 2 STAMPED STEEL OFFSET ADA BASES. BEIGEWOOD(7850-60) LAMINATE FINISH WITH SILVER DUR-A-EDGE.
4B	30" X 42" X 30" TABLE	PLYMOLD	DAI	3	30" WIDTH X 42" LENGTH X 30" HEIGHT WITH 2 STAMPED STEEL OFFSET ADA BASES. VAPOR STRAND (4839K-38) LAMINATE FINISH WITH SILVER DUR-A-EDGE.
4C	30" ROUND TABLE	PLYMOLD	DAI	3	42" DIAMETER ROUND TABLE. "X" SERIES PEDESTAL. 22" X 22" STAMPED STEEL FOOT. BEIGEWOOD(7850-60) LAMINATE FINISH WITH SILVER DUR-A-EDGE.
5A	24" X 20" X 30" TABLE	PLYMOLD	DAI	1	30" HIGH WITH FREE STANDING. "X" SERIES PEDESTAL. 22" X 22" STAMPED STEEL FOOT. BEIGEWOOD(7850-60) LAMINATE FINISH WITH SILVER DUR-A-EDGE.
6A	CHAIR	PLYMOLD	DAI	6	18" HIGH CHAIR WITH UPHOLSTERED SEAT PAD. PAD COLOR IS CHOCOLATE BY REID WTLN LTD. BACK COLOR IS LINEN D427-60 BY WALSMART. FRAME COLOR IS STARDUST SILVER PRSF 60127 BY P'S COATINGS.
6B	CHAIR	PLYMOLD	DAI	6	18" HIGH CHAIR WITH UPHOLSTERED SEAT PAD. PAD COLOR IS CHOCOLATE BY REID WTLN LTD. BACK COLOR IS LINEN D427-60 BY WALSMART. FRAME COLOR IS STARDUST SILVER PRSF 60127 BY P'S COATINGS.
6C	BAR HEIGHT CHAIR	PLYMOLD	DAI	6	30" HIGH CHAIR WITH UPHOLSTERED SEAT PAD. PAD COLOR IS CHOCOLATE BY REID WTLN LTD. BACK COLOR IS LINEN D427-60 BY WALSMART WITH SILVER FRAME.
8	TRASH/RECYCLE RECEPTACLE	PLYMOLD	DAI	1	DOUBLE HOLE TRASH/RECYCLE RECEPTACLE. 25" X 29" BEIGEWOOD LAMINATE CABINET FINISH. FROSTY WHITE MIRROR TOP AND OVERSHELF.
9A	SODA FOUNTAIN	COCA-COLA	DAI	1	FREESTYLE 7000 COUNTERTOP TOUCH SCREEN SODA UNIT. 115 VOLT/1.20 AMP. SUPPLIED AND INSTALLED BY LOCAL BOTTLER (COKE).
10A	72" BEVERAGE DESTINATION CENTER	DUKE	DAI	1	TRASH CHUTE ON LEFT OF COUNTER FACE. STAINLESS STEEL TOP. BEIGEWOOD LAMINATE FINISH (7850-60). INSTALLED BY FSTGC.
10B	110" BEVERAGE SHROUD	DUKE	DAI	1	110" OVERALL LENGTH WHITE METAL SHROUD WITH REMOVABLE PANEL FOR ACCESS TO ICE ON TOP OF SODA.
13	BEVERAGE CADDY	NEMCO	DAI	1	LID/STRAW CADDY. PLACED ON TOP OF BEVERAGE COUNTER.
14	CHP DISPLAY	DUKE	DAI	2	48.34" X 18" CHP DISPLAY UNIT.
15	DISPLAY REFRIGERATOR (LH)	TRUQUEED	DAI	1	1 DOOR FLOOR MODEL. DEDICATED 115V, 15 AMP DUPLEX OUTLET (NEMA 5-15R WITHIN 6 FEET).
16	24" ILLUMINATED CHOICE MARK SIGN	TPC	DAI	1	36" X 7" THICK HALO LIT LED LOGO SIGN/TRAFFIC PANEL MOUNTED OFF WALL. INSTALLED BY FSTGC.
17	TEA/COFFEE BREWER	BLUN-O-MATIC CORP.	DAI	1	DEDICATED 120V, 15 AMP DUPLEX OUTLET (NEMA 5-15P) WITHIN 3 FEET. PLUMBING. 20-90 PSI. MODEL SUPPLIED WITH 1/4" MALE FLARE FITTING. MIN. 1 GPM WATER FLOW.
18	TOY DISPLAY	DUKE	DAI	1	QUEUE LINE TOY DISPLAY WITH TOP HEATING AND 1 1/8" MOUNTING TAB.
19A	18" HOT FOOD SECTION-RH	DUKE	DAI	1	18" HOT FOOD UNIT. 500 WATT/115 VOLT HEATING ELEMENT WITH THERMOSTAT.
19B	60" COLD PAN	DUKE	DAI	2	60" COLD PAN. INSTALLED BY G.C. ULS APPROVED. ELECTRICAL CONNECTIONS AND WIRING TO LOCAL AND STATE CODE REQUIREMENTS AS DETERMINED BY FSTGC OR ELECTROGAP.
19C	31" SOUP SECTION-RH	DUKE	DAI	1	SOUP SECTION WITH 2 NEST 2 QUART SOUP CONTAINERS.
19D	61" CASH SECTION	DUKE	DAI	1	61" CASH SECTION X 34" ADA REQUIRED WORKING HEIGHT. 4 CUP STORAGE UNITS BELOW WITH CUTOFF FOR SAFE. POS UNIT.
20A	PICK UP SHELF	DUKE	DAI	1	COUNTERTOP SHELF. 3 TIER CHP DISPLAY RACK ON FACE OF UNIT.
20B	COFFEE BREWER	BLUNN	DAI	1	3 TIER COUNTERTOP SHELVING UNIT. OPEN ON ALL SIDES.
20C	FRAMED COFFEE GRAPHIC	VSG	DAI	2	SH-S BRWS SET COFFEE MAKERS AND STAND. 1 GAL. CAPACITY. 2 BREWERS PER WARMING STAND. 120V. NSF APPROVED.
21	COOKIE DISPLAY	DUKE	DAI	1	LAYERED ACRYLIC WALL MOUNTED COFFEE GRAPHICS. INCLUDES BLACK FRAME.
22	OVEN CART	DUKE	DAI	1	4 TIER COOKIE DISPLAY CASE WITH SUB-WRAP STORAGE BELOW.
23	SAFE	C.S.S.	DAI	1	18" HIGH X 30" WIDE. SPEED OVEN STACKING CART ON CASTERS. STAINLESS STEEL FINISH.
24	P.O.S.	PARMI-CROSSHP	DAI	1	QUICK DROP. INSTALLED BY G.C. IN SERVICE AREA.
24A	P.O.S. SHROUD	VSG	DAI	1	PG BASED POINT OF SALE SYSTEM. REQUIRES DEDICATED POWER SOURCE WITH ISOLATED BREAKER.
25	HAND SINK	DUKE/LOCAL	DAI	1	SMALL FORMAT PAINTED METAL SHROUD. FOR USE ON POS SHELF.
27	NU-VU BREAD OVEN (RH)	NU-VU	DAI	1	WALL MOUNTED HAND SINK SUBJECT TO HEALTH CODE APPROVAL. PRE-NEGOTIATED SUPPLIER SHALL BE BURNS, JONES & MCDONOUGH, INC. CONTACT: CUSTOMER SERVICE (800) 869-7099. FAX: (478) 758-8968. E-MAIL: BURNS@BURNSJONES.COM. PAPER DISPENSER. FURNISHED AND INSTALLED BY VMGC.
28	NU-VU BREAD OVEN (RH)	NU-VU	DAI	1	NU-VU "X" ALL IN ONE OVEN/PROOFER. DEDICATED CIRCUIT REQUIRED. DIRECT WIRE. INSTALLED BY G.C. WATERLINE REQUIRED.
29	COMBINATION BREAD CABINET(LH)	NU-VU	DAI	1	INTEGRATED OPEN AIR COOLING RACK ABOVE WITH ENCLOSED CABINET BELOW. INSTALLED BY FSTGC.
29C	FRONT LINE BREAD DISPLAY-RH	DUKE	DAI	1	ALUMINUM CABINET WITH CURVED GLASS DISPLAY. INSTALLED BY G.C. NSF APPROVED.
29D	DIGITAL MENUBOARD	L.O.	DAI	1	485MM, 40" GLASS LED MONITOR AND REQUIRED WIRING (CATERERS).
30A	WOOD EQUIPMENT VALANCE	DUKE	DAI	1	BEIGEWOOD LAMINATE EQUIPMENT VALANCE. 100" L.
30B	S.S. VALANCE	DUKE	DAI	1	STAINLESS STEEL DECORATIVE VALANCE. 10" Z' LENGTH.
31	BACK COUNTER SINK	DUKE	DAI	1	BACK COUNTER WITH CENTER HAND SINK. STAINLESS STEEL FINISH. PROVIDE SOAP AND PAPER TOWEL DISPENSER. INSTALLED BY FSTGC.
33	48" REFRIGERATED BACK COUNTER	DUKE	DAI	1	BACK COUNTER WITH UNDER COUNTER REFRIGERATOR. STAINLESS STEEL FINISH. WALLS BY FSTGC.
34	RAPID COOK OVEN	MERRYCHEF	DAI	2	MERRYCHEF MICROWAVE/CONVECTION OVEN. REFER TO EQUIPMENT BACKUP SHEET FOR FURTHER SPECIFICATIONS.
35	FRESH DISPLAY	FEDERAL	DAI	1	REFRIGERATED FRESH FOOD DISPLAY CABINET. REQUIRES 120V, 15 AMP 3-WIRE NEMA 5-15P PLUG.
36	3 COMP SINK	DUKE/RAK MANUFACTURING	DAI	1	3 COMPARTMENT 18" DRINKING SINKS. INSTALLED BY FSTGC.
37	MOP SINK	LOCALLY SOURCED	VMGC	1	FLOOR LEVEL. 2' ACQUAIRE. LOCALLY FURNISHED BY VMGC.
39A	72" X 30" WORKTABLE	DUKE MANUFACTURING	DAI	1	72" X 30" AVAILABLE WITH OR WITHOUT GALVANIZED UNDERSHELF. DOOR WITHOUT UNDERSHELF IF SODA IS STORED BENEATH TABLE.
40A	WALL SHELF	INTER METRO	DAI	5	18" SUPER ERRECTA BRITE. EPOXY COATED. WALL MOUNTED. 36" LENGTH. 1 1/2" DEPTH. 1/2" THICK. ACCESSORIES AVAILABLE. PROVIDE 2X4 CONTINUOUS HORIZONTAL WOOD BLOCKING AT 78" AFF. ENTIRE BRIGHT FINISH. 1/2" DIA. HARD. INSTALLED BY FSTGC. ULS APPROVED.
40B	SMART WALL SYSTEM	INTER METRO	DAI	1	SMART WALL SYSTEM. 78" AFF. ENTIRE BRIGHT FINISH. 1/2" DIA. HARD. INSTALLED BY FSTGC. ULS APPROVED.
41	VEGETABLE SINK	DUKE/RAK MANUFACTURING	DAI	1	1 COMPARTMENT 18" DRINKING SINKS. INSTALLED BY FSTGC.
43	CLEANING PRODUCT RACK	SSDC	DAI	1	DISPENSING SINK. CLEANING SINKS.
44	DISHWASHER	SSDC	DAI	1	33.75" H X 24" W. 12 AMP DRAW. TO BE FUSED AT 15 AMP. HOT WATER W/ 25-95 PSI FLOW PRESSURE REQUIRED. SEE MANUFACTURER FOR DETAILS.
45	VEGETABLE SLICER	NEMCO	DAI	1	WALK-IN. NSF APPROVED.
46	FRIG CABINET	LOCKWOOD	DAI	1	WALK-IN. NSF APPROVED. 3/4" X 8" COOLER RIGHT HAND DOOR HINGE. SELF EVAPORATING COMPRESSOR. DIRECT WIRE. NSF APPROVED. INSTALLED BY FSTGC.
47	FRIG COOLER	NORLAK	DAI	1	WALK-IN. NSF APPROVED. 3/4" X 8" COOLER RIGHT HAND DOOR HINGE. SELF EVAPORATING COMPRESSOR. DIRECT WIRE. NSF APPROVED. INSTALLED BY FSTGC.
48	FRIG FREEZER	NORLAK	DAI	1	WALK-IN. NSF APPROVED. 3/4" X 8" COOLER RIGHT HAND DOOR HINGE. SELF EVAPORATING COMPRESSOR. DIRECT WIRE. NSF APPROVED. INSTALLED BY FSTGC.
48A	STORAGE UNITS	INTER METRO	DAI	1	WALK-IN. NSF APPROVED. 3/4" X 8" COOLER RIGHT HAND DOOR HINGE. SELF EVAPORATING COMPRESSOR. DIRECT WIRE. NSF APPROVED. INSTALLED BY FSTGC.
49B	STORAGE UNITS	INTER METRO	DAI	1	WALK-IN. NSF APPROVED. 3/4" X 8" COOLER RIGHT HAND DOOR HINGE. SELF EVAPORATING COMPRESSOR. DIRECT WIRE. NSF APPROVED. INSTALLED BY FSTGC.
49C	STORAGE UNITS	INTER METRO	DAI	1	WALK-IN. NSF APPROVED. 3/4" X 8" COOLER RIGHT HAND DOOR HINGE. SELF EVAPORATING COMPRESSOR. DIRECT WIRE. NSF APPROVED. INSTALLED BY FSTGC.
52	MICROWAVE	INTERMASTER/SHARP	DAI	1	300R CUTLET REQUIRED. 1200 WATT. 120V/60/20/1PH 20 AMP CIRCUIT. DEDICATED CIRCUIT REQUIRED.
55	ICEE MACHINE FLOOR	INTER PBD	DAI	1	MODEL #F80 S08 3 BARREL DISPENSER WITH 24" HIGH BASE. 215 TO 240 VAC/30/20/1PH 30 AMP. 3-WIRE NEMA L14-30P PLUG. 1/2" WATERLINE W/ SHUT OFF REQUIRED. SUPPLIED AND INSTALLED BY ICEE COMPANY.



1 ENLARGED FLOOR PLAN
1/4" = 1'-0"

QTY	DESCRIPTION
2	1 ROUNDUP
3	1 FROZEN DRINK DISPENSER
4	1 LEMONADE DISPENSER
5	1 ICE BIN
6	1 TOPPING
7	1 FLIP TRAY
8	2 HOT WATER DISPENSER
9	1 MIXER
10	1 THERMAL SHELF
11	1 ELECTRICAL OVEN
12	1 MICROWAVE OVEN (BELOW COUNTER)
13	1 TRIPLE BIN STORAGE (BELOW COUNTER)
14	1 DIP TRAY
15	1 TRAY W/ WIRE STAINLESS STEEL INSERT (BELOW COUNTER)
16	1 BAG STORAGE BINS (BELOW COUNTER)
17	2 DIGITAL MENUBOARD
18	1 DIP BOWL
19	1 ROLLING TEMPLATE (42" LENGTH)
20	1 HOT DOG WARMER
21	1 UNDER-COUNTER REFRIGERATOR
22	1 3 STAINLESS STEEL TABLE (20" HT)
23	1 AUNTIE ANNE'S LOGO BLUE BROND PANEL 50" X 30"
24	1 AUNTIE ANNE'S LOGO BLUE SINTRA PANEL 22" X 30"

AUNTIE ANNE'S EQUIPMENT SCHEDULE

QTY	DESCRIPTION
2	1 ROUNDUP
3	1 FROZEN DRINK DISPENSER
4	1 LEMONADE DISPENSER
5	1 ICE BIN
6	1 TOPPING
7	1 FLIP TRAY
8	2 HOT WATER DISPENSER
9	1 MIXER
10	1 THERMAL SHELF
11	1 ELECTRICAL OVEN
12	1 MICROWAVE OVEN (BELOW COUNTER)
13	1 TRIPLE BIN STORAGE (BELOW COUNTER)
14	1 DIP TRAY
15	1 TRAY W/ WIRE STAINLESS STEEL INSERT (BELOW COUNTER)
16	1 BAG STORAGE BINS (BELOW COUNTER)
17	2 DIGITAL MENUBOARD
18	1 DIP BOWL
19	1 ROLLING TEMPLATE (42" LENGTH)
20	1 HOT DOG WARMER
21	1 UNDER-COUNTER REFRIGERATOR
22	1 3 STAINLESS STEEL TABLE (20" HT)
23	1 AUNTIE ANNE'S LOGO BLUE BROND PANEL 50" X 30"
24	1 AUNTIE ANNE'S LOGO BLUE SINTRA PANEL 22" X 30"

INSECT CONTROL UNIT LEGEND

TYPE	TOTAL	D
1		
2		
3		
4		
5		
6		
7		
8		
9		
10		
11		
12		
13		
14		
15		
16		
17		
18		
19		
20		
21		
22		
23		
24		

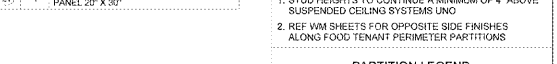
TENANT DATA

NO.	DESCRIPTION	AREA
400	BACKROOM	358 SF
401	SERVICE AREA	309 SF
402	DINING	759 SF
		1423 SF

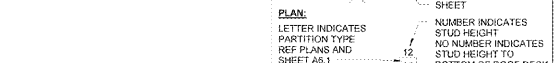
PARTITION NOTES

- STUD HEIGHTS TO CONTINUE A MINIMUM OF 4" ABOVE SUSPENDED CEILING SYSTEMS UNO
- REF VM SHEETS FOR OPPOSITE SIDE FINISHES ALONG FOOD TENANT PERIMETER PARTITIONS

PARTITION LEGEND



PLAN: LETTER INDICATES PARTITION TYPE. REF PLANS AND SHEET A5.



NON RATED WALL, COOLER/FREEZER WALL, INDICATES BUILDING TAPE REF. 8, 10, SWA3.

RETAIL DESIGN COLLABORATOR

SCA Design Group, P.C.
1400 East Beaver Creek Road
Leesburg, VA 20109
www.sca-design.com

CONSULTANTS

SCA Design Group, P.C.
1400 East Beaver Creek Road
Leesburg, VA 20109
www.sca-design.com

ISSUE BLOCK

OTB	11/30/17
-----	----------

CHECKED BY: TH
DRAWN BY: KT
PROTO CYCLE: 07/28/17
DOCUMENT DATE: 09/13/17

BID SET NOT FOR CONSTRUCTION

SUBWAY FLOOR AND FIXTURE PLANS, AND SCHEDULES

SHEET: **SWA1**

Order Plans @