

SHEET NOTES
 1. REF MECHANICAL FOR CONTINUATION OF PIPING. REF SPECIFICATIONS FOR TYPE OF PIPE TO BE USED.
 2. REF AC1 FOR EQUIPMENT LEGEND

ALL INFORMATION SHOWN ON THIS SHEET IS FOR REFERENCE ONLY. EQUIPMENT DEPICTED IN THESE DIAGRAMS SHOULD BE CONFIRMED WITH MANUFACTURER'S SPECIFICATIONS AND INSTALLED ACCORDING TO THE MANUFACTURER'S INSTRUCTIONS.

RETAIL DESIGN COLLABORATIVE
 11/30/17
 1:13 PM
 rdcoll...@walmart.com

STIPULATION FOR THE ARCHITECT AND ENGINEER TO BE PROVIDED TO THE CONTRACTOR. THE CONTRACTOR SHALL VERIFY THE ACCURACY OF ALL DIMENSIONS, MATERIALS, AND METHODS OF INSTALLATION. THE CONTRACTOR SHALL BE RESPONSIBLE FOR OBTAINING ALL NECESSARY PERMITS AND APPROVALS FROM THE LOCAL AND STATE AUTHORITIES. THE CONTRACTOR SHALL BE RESPONSIBLE FOR VERIFYING THE LOCATION AND DEPTH OF ALL UTILITIES PRIOR TO ANY EXCAVATION OR INSTALLATION WORK.

CONSULTANTS

Walmart
LEESBURG, VIRGINIA
 STORE NO: 1504-05
 JOB NUMBER: 1106026 : PHOTO

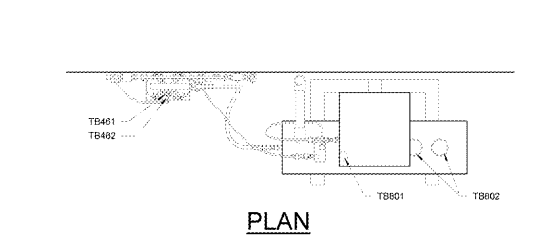
ISSUE BLOCK	
OTB	11/30/17

CHECKED BY:	RW
DRAWN BY:	ETH
FILE NAME:	180AC1.2
PROTO CYCLE:	042817
DOCUMENT DATE:	09/13/17

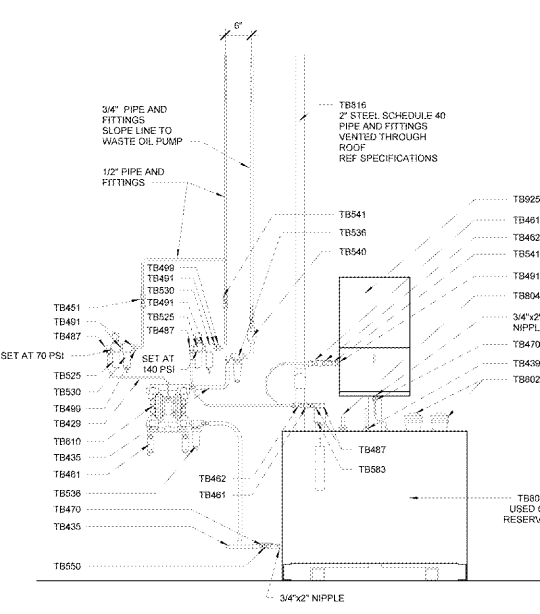
BID SET NOT FOR CONSTRUCTION

AUTO CENTER EQUIPMENT DETAILS

SHEET: AC1.2

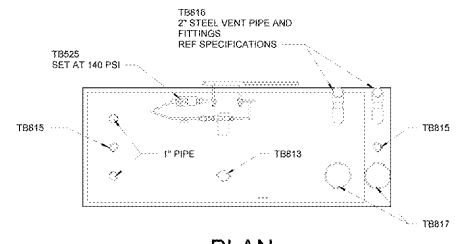


PLAN

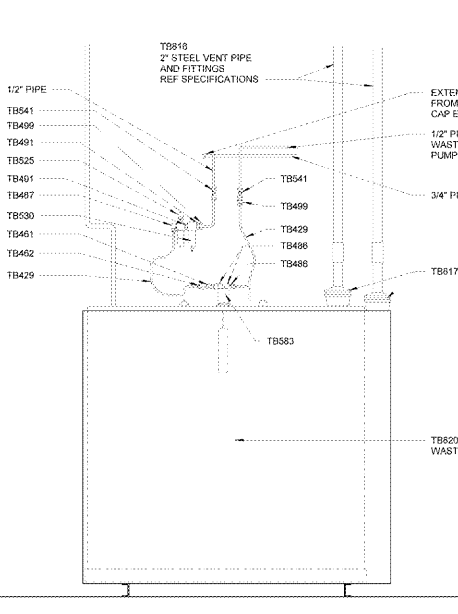


ELEVATION

6 OIL FILTER CRUSHER ASSEMBLY
 34\"/>

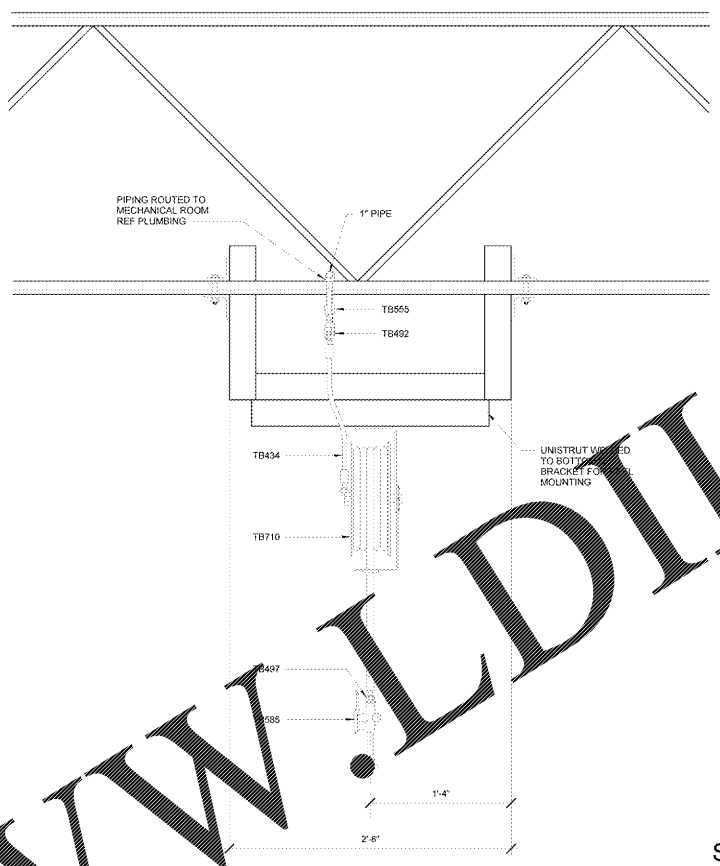


PLAN



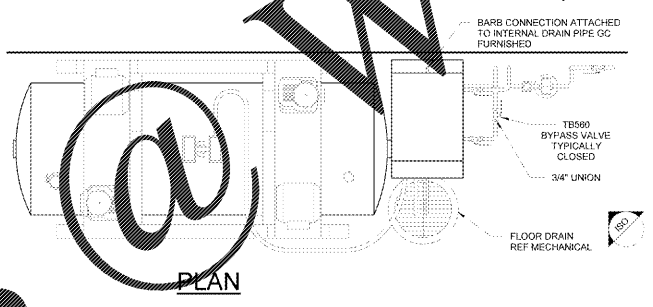
ELEVATION

5 WASTE OIL TANK ASSEMBLY
 34\"/>

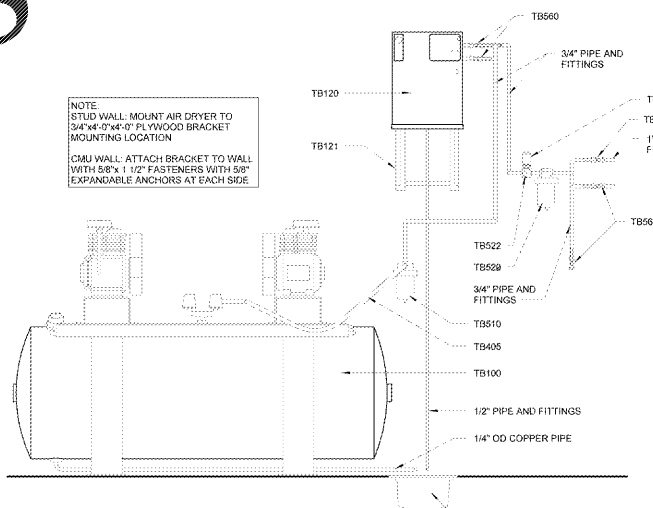


WINDSHIELD SOLVENT REEL

4 SUSPENDED HOSE REEL
 1\"/>

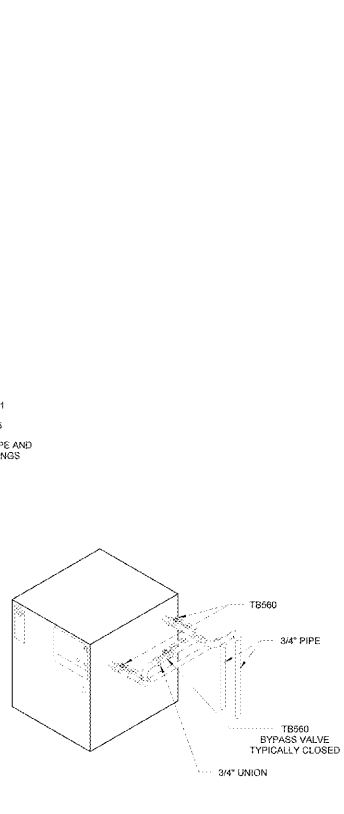


PLAN

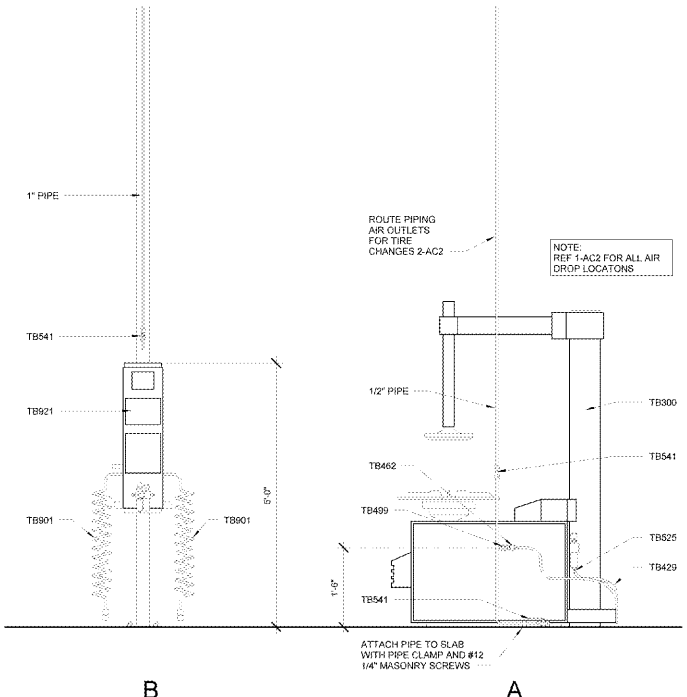


ELEVATION

2 AIR COMPRESSOR ASSEMBLY
 34\"/>

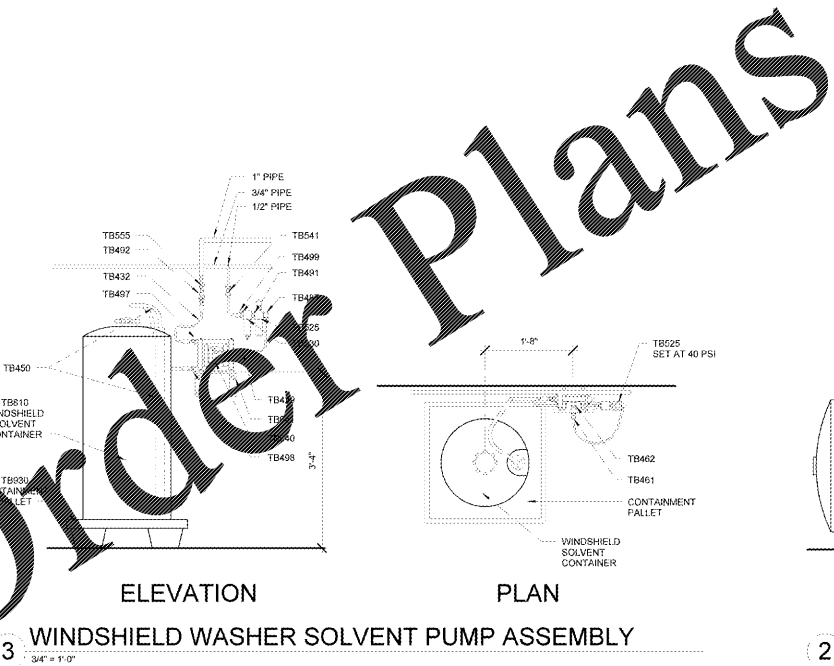


ISOMETRIC



B AIR DROP AT AIR UTILITY BOX TB921

1 AIR DROP
 34\"/>



ELEVATION

PLAN

3 WINDSHIELD WASHER SOLVENT PUMP ASSEMBLY
 34\"/>

Order Plans

WWW.LDILine.com