

EQUIPMENT SCHEDULE							
NO	DESCRIPTION	REFERENCE SPECIFICATION SECTION 01645 FOR MANUFACTURER AND MODEL NUMBERS NOT LISTED IN EQUIPMENT SCHEDULE		INSTALLED BY	FINAL CONNECT	SUPPLIED BY	NOTES
		MANUFACTURER	MODEL NO.				
CI = INSTALLER	GC = GENERAL CONTRACTOR	ES = EQUIPMENT SUPPLIER	WM = WALMART				
TB100	AIR COMPRESSOR			CI	GC	WM	2.7
TB120	AIR DRYER			CI	GC	WM	1.2
TB121	AIR DRYER BRACKET			CI	GC	WM	1.2
TB130	CANISTER VAC			CI	GC	WM	2.7
TB200	9,000 LB PAD LIFT			ES	GC	GC	2, 5, 6, 7
TB240	2IP PIT			ES	GC	GC	2.7
TB300	TIRE CHANGER			WM	GC	WM	2
TB310	WHEEL BALANCER			CI	GC	WM	2.7
TB405	LP AIR HOSE 3/4"x4" WITH 3/4" NPTM			CI	CI	WM	2.7
TB420	LP AIR HOSE 1/2"x2" WITH 1/2" NPTM			CI	CI	WM	2.7
TB432	LP WATER HOSE 1/2"x2" WITH 1/2" NPTM			CI	CI	WM	2.7
TB434	LP WATER HOSE 1/2"x1/2" WITH 1/2" NPTM			CI	CI	WM	2.7
TB435	MP OIL HOSE 3/4"x6" WITH 3/4" NPTM			CI	CI	WM	2.7
TB430	LP OIL HOSE 3/4"x24" WITH 3/4" NPTM			CI	CI	WM	2.7
TB445	EVAQUAMASTER	MODULUBE	BLAZER 6000 LIFT	ES	GC	GC	2, 7, 8
TB446	EVAQUAMASTER DRAIN PAN ADAPTER	MODULUBE	2IP PIT III	ES	GC	GC	2.7
TB450	SUCTION KIT			CI	CI	WM	2.7
TB461	DIAPHRAM - WALL MOUNT BRACKET			CI	CI	WM	2.7
TB461	QUICK-CONNECT AIR NIPPLE 1/4" NPTM			CI	CI	WM	2.7
TB462	QUICK-CONNECT AIR COUPLER 1/4" NPTF			CI	CI	WM	2.7
TB470	ADAPTER UNION 3/4" NPTF x 3/4" NPTM			CI	CI	WM	2.7
TB474	2" M x 3/4" BUSHING			CI	CI	WM	2.7
TB486	SWIVEL 1/4" NPTM x 1/4" NPTF			CI	CI	WM	2.7
TB487	STREET ELBOW 1/4" NPTF x 1/4" NPTM			CI	CI	WM	2.7
TB491	HEX NIPPLE 1/4" NPTM x 1/4" NPTM			CI	CI	WM	2.7
TB492	BUSHING 1/2" NPTM x 1/4" NPTF			CI	CI	WM	2.7
TB497	REDUCING ADAPTER 1/4" NPTM x 3/8" NPTF			CI	CI	WM	2.7
TB498	HEX NIPPLE 3/4" NPTM x 1/2" NPTM			CI	CI	WM	2.7
TB499	BUSHING 1/2" NPTM x 1/4" NPTF			CI	CI	WM	2.7
TB510	LUBRICATOR 3/4" NPTF			CI	CI	WM	2.7
TB520	FILTER 3/4" NPTF WITH AUTO DRAIN			CI	CI	WM	2.7
TB521	REGULATOR			CI	CI	WM	2.7
TB522	GAUGE			CI	CI	WM	2.7
TB525	REGULATOR WITH GAUGE 1/4" NPTF			CI	CI	WM	2.7
TB530	FILTER 1/4" NPTF			CI	CI	WM	2.7
TB535	BAND STRAINER 1" NPTF			CI	CI	WM	2.7
TB540	CHECK VALVE			CI	CI	WM	2.7
TB541	LP SHUT-OFF VALVE 1" NPTF			CI	CI	WM	2.7
TB550	MP SHUT-OFF VALVE 1/2" NPTF AIR			CI	CI	WM	2.7
TB555	LP SHUT-OFF VALVE 1" NPTF			CI	CI	WM	2.7
TB560	LP SHUT-OFF VALVE 3/4" NPTF			CI	CI	WM	2.7
TB560	MP SHUT-OFF VALVE 3/4" NPTF			CI	CI	WM	2.7
TB550	OVERFILL WARNING VALVE			CI	CI	WM	2.7
TB585	LP WATER BIBB 1/4" (F)			CI	CI	WM	2.7
TB610	WASTE OIL PUMP			CI	CI	WM	2.7
TB640	WINDSHIELD WASHER FLUID PUMP			CI	CI	WM	2.7
TB641	DIAPHRAM - WALL MOUNT BRACKET			CI	CI	WM	2.7
TB710	WINDSHIELD WSR REEL SET WITH 3/8"x30' HOSE AND STOP			CI	CI	WM	2.7
TB801	25 GALLON USED OIL RESERVOIR			CI	CI	WM	2.7
TB802	3" EMERGENCY VENT			CI	CI	WM	2.7
TB804	30" KRUEGER GAUGE			CI	CI	WM	2.7
TB810	WINDSHIELD WASHER FLUID 55 GALLON CONTAINER			CI	CI	WM	2.7
TB815	FILL CAP			CI	CI	WM	2.7
TB816	SCALLY GAUGE			CI	CI	WM	2.7
TB816	UP-FLOW VENT			CI	CI	WM	2, 7, 8
TB817	1" PRESSURE RELEASE EMERGENCY VENT			CI	CI	WM	2.7
TB820	WASTE OIL TANK 40GAL			CI	CI	WM	2.7
TB830	CUSTOMER RETURN OIL TANK 200 GALLON			CI	CI	WM	2.7
TB840	BULK OIL FILTER STORAGE CONTAINER			CI	CI	WM	2.7
TB900	LIFT POWER UNIT ON SUPPORT POST	MODULUBE	BLAZER 9000 LIFT	ES	CI	GC	2, 6
TB901	GOILING HOSE			CI	CI	WM	2.7
TB921	SUPPORT POST WITH AIR UTILITY BOX			ES	CI	WM	2.7
TB930	CONTAINMENT PALLET			CI	CI	WM	2.7
TB960	CASTROL eDISPENSE			ES	ES	ES	2.7

GENERAL NOTES

1. ALL TANKS AND PIPING TO BE INSTALLED AND PROPERLY TESTED IN ACCORDANCE WITH ALL APPLICABLE CODES AND MANUFACTURER REQUIREMENTS. REF SPECIFICATIONS.
2. ALL PIPING AND FITTINGS TO BE SUPPLIED BY GENERAL CONTRACTOR AND INSTALLED BY CERTIFIED INSTALLER.

NOTES

1. FURNISHED BY WALMART AND INSTALLED BY GENERAL CONTRACTOR PER MANUFACTURER'S SPECIFICATIONS.
2. GENERAL CONTRACTOR IS RESPONSIBLE TO COORDINATE DELIVERY SCHEDULE REF SPECS.
3. NOT USED.
4. NOT USED.
5. HOSES ROUTED THROUGH EMBEDDED PIPE SLEEVE. REF MECHANICAL.
6. TB900 SHALL BE PROVIDED WITH LIFT.
7. GENERAL CONTRACTOR IS RESPONSIBLE TO COORDINATE INSTALLATION SCHEDULE. REF SPECIFICATIONS.
8. REF MECHANICAL FOR LOCATION.

SHEET NOTES

1. ALL INTERIOR PLAN DIMENSIONS ARE TO FACE OF STUD/PRECAST/CMU UNLESS NOTED OTHERWISE.
2. REFER TO MECHANICAL AND ELECTRICAL DRAWINGS FOR ADDITIONAL EQUIPMENT INFORMATION.
3. ALL LIFT EQUIPMENT TO BE CENTERLINE OF OVERHEAD DOOR OPENING.
4. REF SHEET A7 FOR SCHEDULE FINISH KEY.
5. REF SHEET A5.5 FOR TOILET FIXTURE HEIGHTS AND CLEARANCES.

KEYNOTES

- 2.04 ORNAMENTAL METAL FENCE
- 5.02 PAINTED 5" PIPE BOLLARDS
- 5.57 3" STAINLESS STEEL BOLLARD, 4" OD, FURNISHED BY CONTRACTOR, GALVALUME BY GC
- 6.12 96" HIGH WAINWRIGHT
- 6.27 48" HIGH WAINWRIGHT
- 7.09 METAL DOWNSPOUT, PREPARED BY CONTRACTOR, NOTE OTHERWISE
- 9.10 PAINT WIDE FLOOR STIPES COLOR P5 AT 12" OC, REF MECHANICAL FOR SIZE
- 15.10 EYEWALES

WALMART
LEESBURG, VIRGINIA

11/06/2017 : PHOTO

199 50L-QL

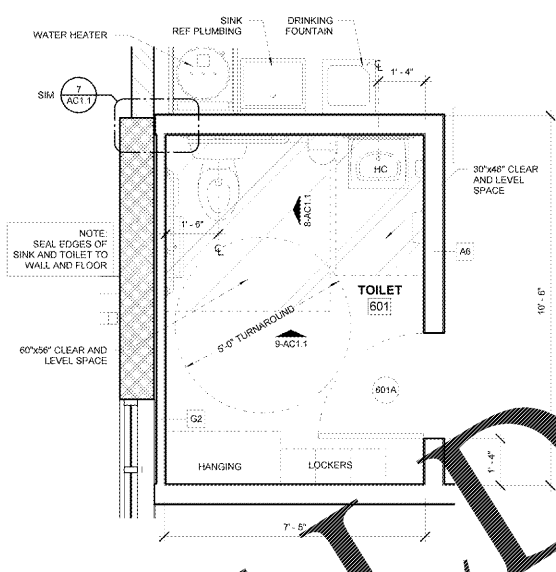
ISSUE BLOCK
OTB 11/30/17

CHECKED BY: RFW
DRAWN BY: ETH
FILE NAME: 190AC1
PROTO CYCLE: 042817
DOCUMENT DATE: 09/13/17

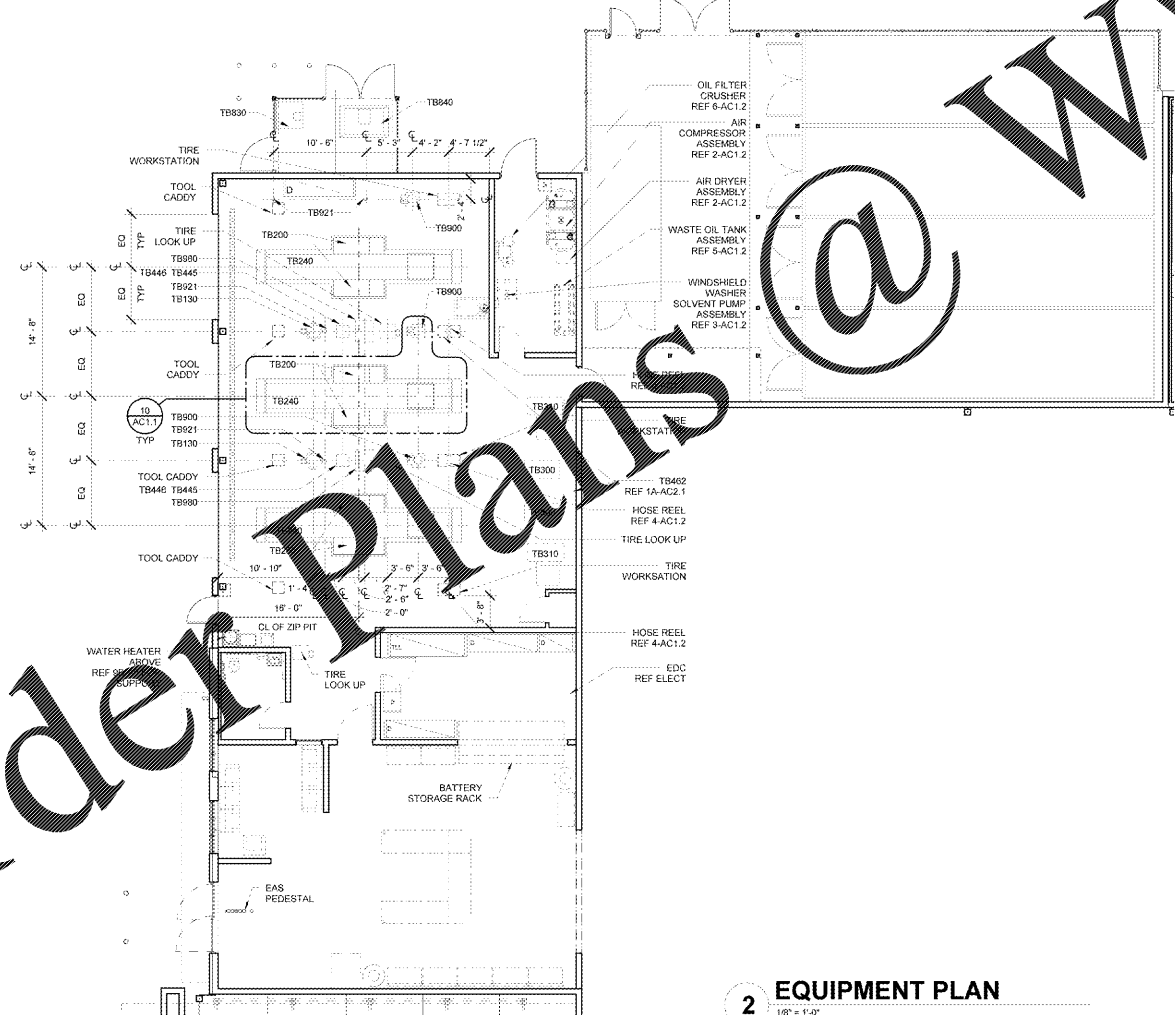
BID SET NOT FOR CONSTRUCTION

AUTO CENTER

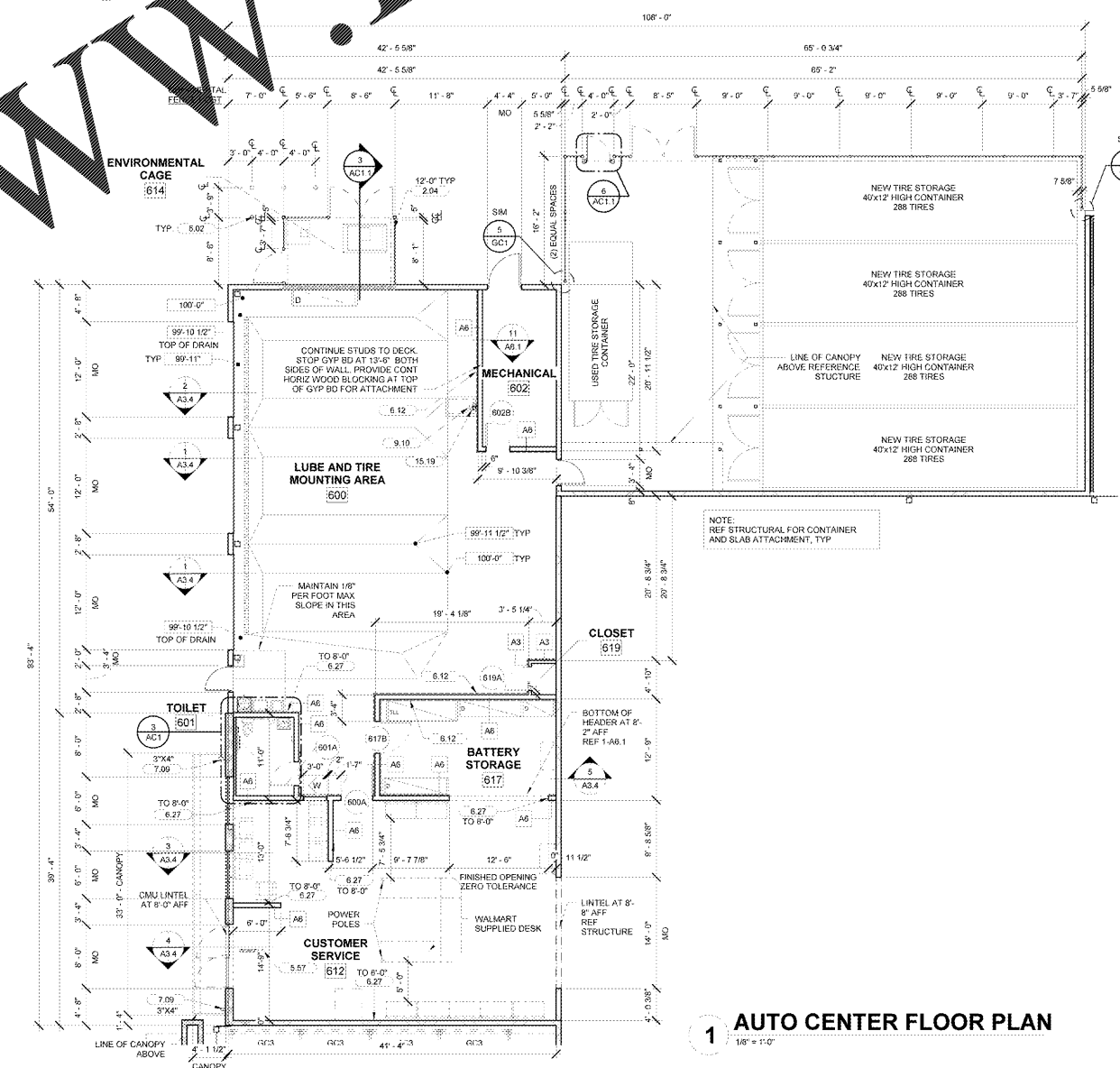
SHEET: AC1



3 ENLARGED TOILET PLAN
1/2" = 1'-0"



2 EQUIPMENT PLAN
1/8" = 1'-0"



1 AUTO CENTER FLOOR PLAN
1/8" = 1'-0"

Order Plans @