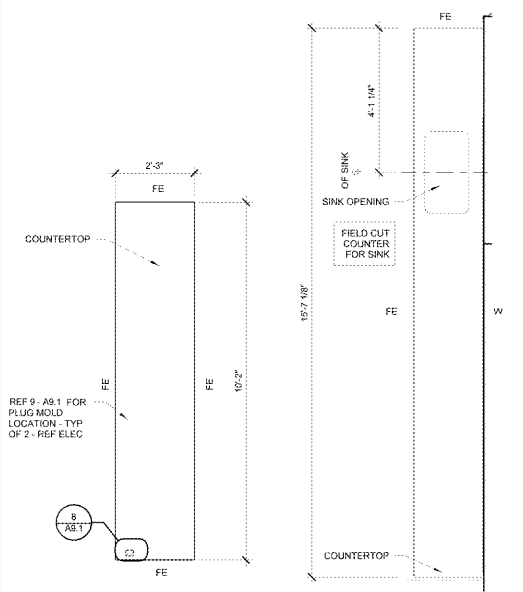


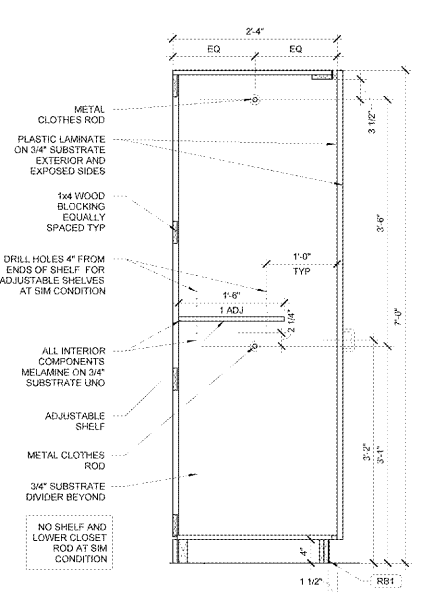
**SHEET NOTES**  
 1. REF SHEET A7 FOR SCHEDULE FINISH KEY  
 2. ALL MELAMINE TO BE WHITE UNO  
 3. REF ELEVATIONS FOR CABINET FINISHED END CONDITIONS

**ABBREVIATION LEGEND**  
 ADJ - ADJUSTABLE SHELF  
 CAB - BUTTS TALLER MILLWORK  
 FE - FINISHED END - REF 6-A9  
 W - BUTTS WALL

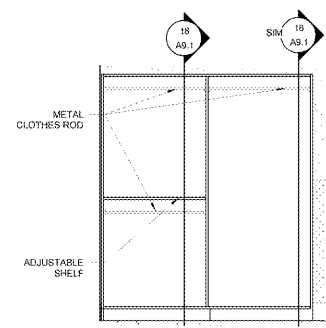
**RET DES**  
 RETAIL DESIGN COLLABORATIVE



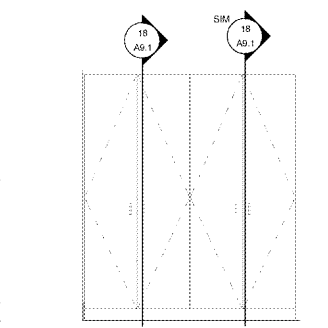
**20 COUNTERTOP**  
1/2" = 1'-0"



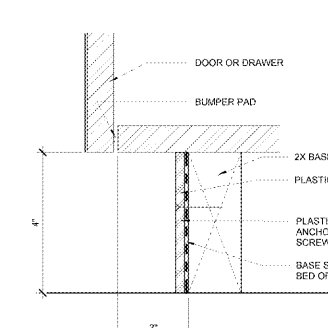
**18 COAT STORAGE SECTION**  
1" = 1'-0"



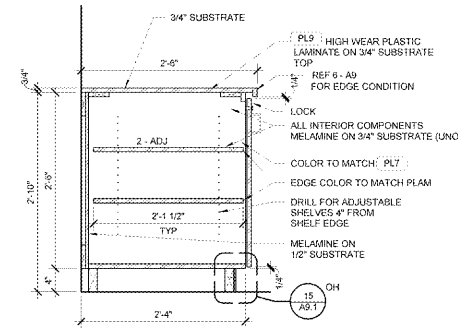
**17 COAT STORAGE SECTION**  
1/2" = 1'-0"



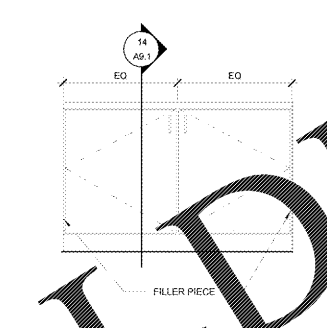
**16 COAT STORAGE ELEVATION**  
1/2" = 1'-0"



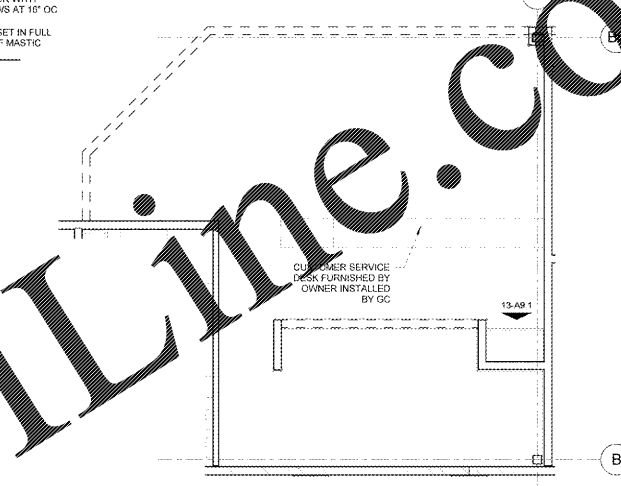
**15 TOE SPACE**  
6" = 1'-0"



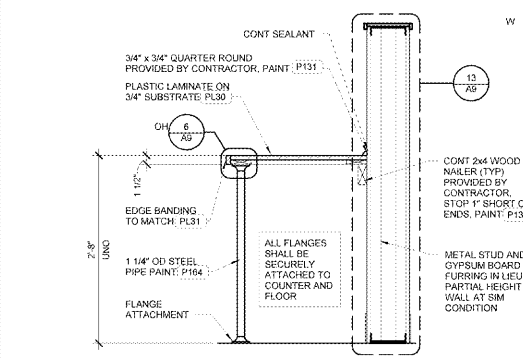
**14 BASE CABINET SECTION**  
1" = 1'-0"



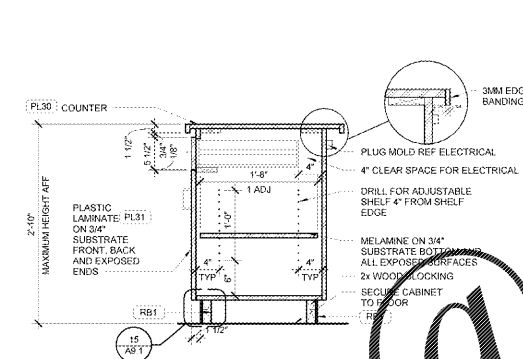
**13 CABINET ELEVATION**  
3/4" = 1'-0"



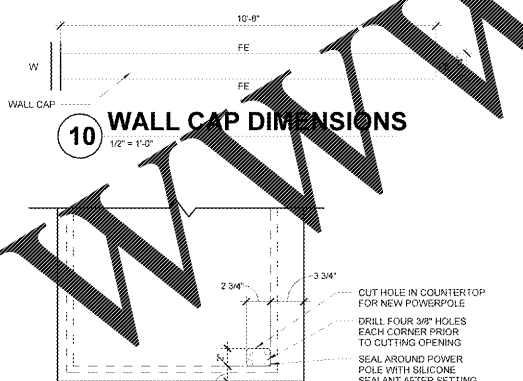
**12 CUSTOMER SERVICE MILLWORK PLAN**  
3/16" = 1'-0"



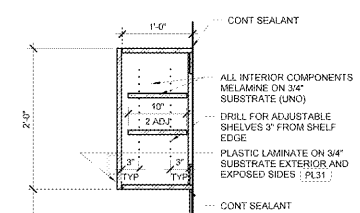
**11 COUNTER SECTION**  
1" = 1'-0"



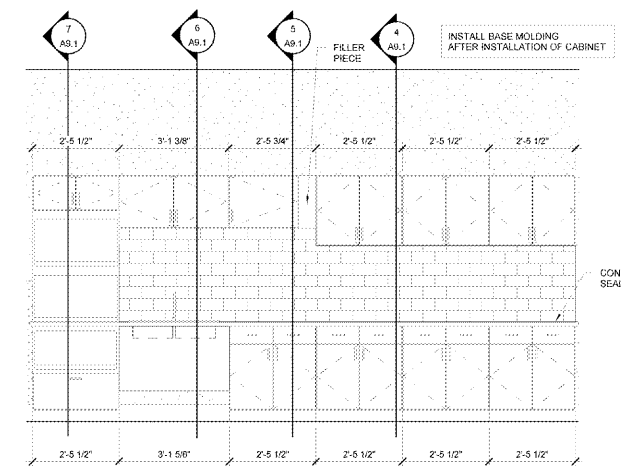
**9 CABINET SECTION**  
1" = 1'-0"



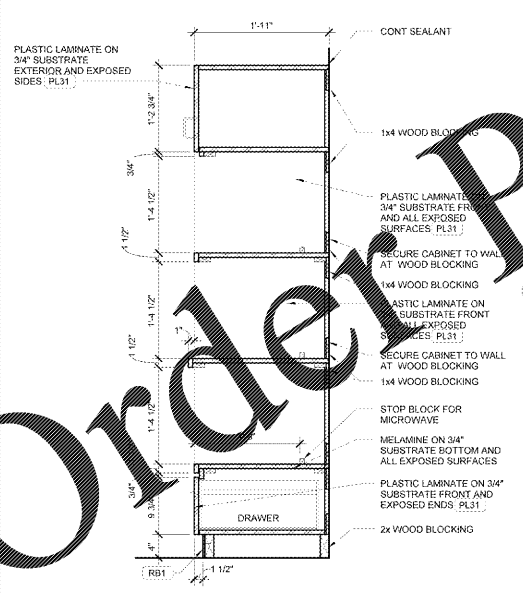
**10 WALL CAP DIMENSIONS**  
1/2" = 1'-0"



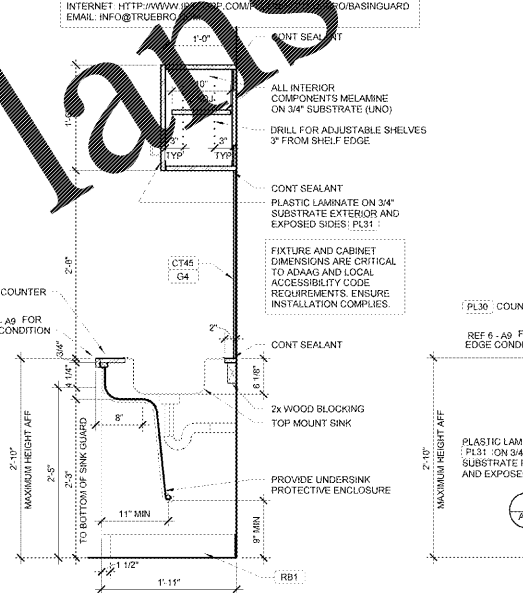
**8 POWER POLE LOCATION**  
1/2" = 1'-0"



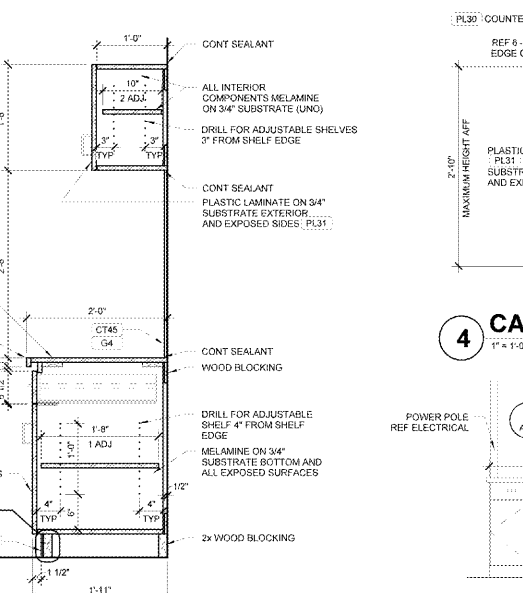
**2 BREAK ROOM ELEVATION**  
1/2" = 1'-0"



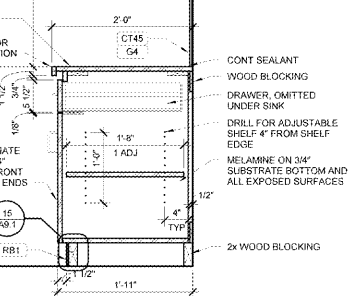
**7 CABINET SECTION**  
1" = 1'-0"



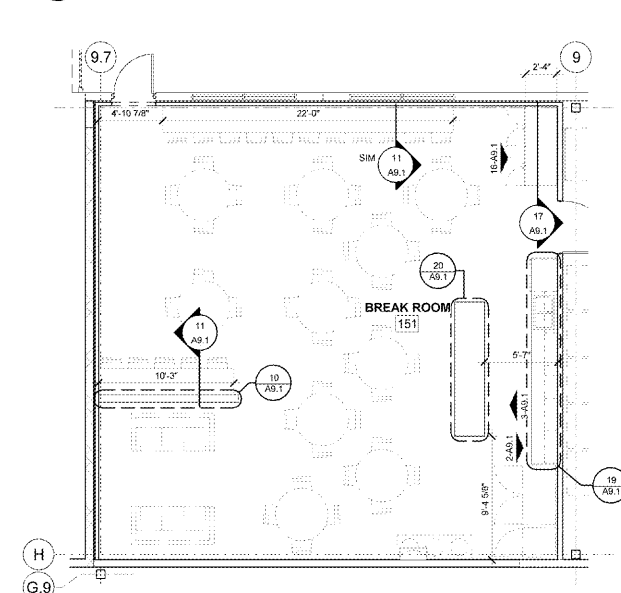
**6 CABINET SECTION**  
1" = 1'-0"



**5 CABINET SECTION**  
1" = 1'-0"



**4 CABINET SECTION**  
1" = 1'-0"



**1 BREAK ROOM PLAN**  
3/16" = 1'-0"

STIPULATION FOR THE...  
 THE DRAWING AND SPECIFICATIONS...  
 CONSULTANTS

CONSULTANTS

**Walmart**  
 LEESBURG, VIRGINIA  
 STORE NO: 1904-05  
 11/06/2017  
 C-190-0501-01

**ISSUE BLOCK**

OTB	11/30/17

CHECKED BY: RW  
 DRAWN BY: EH  
 PROTO CYCLE: 04/28/17  
 DOCUMENT DATE: 09/13/17

**BID SET NOT FOR CONSTRUCTION**

**BREAK ROOM AND CUSTOMER SERVICE MILLWORK DETAILS**

SHEET: **A9.1**