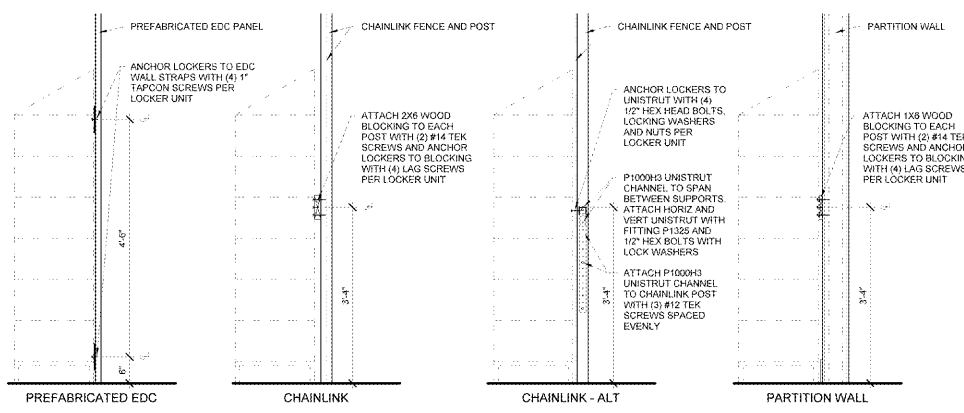
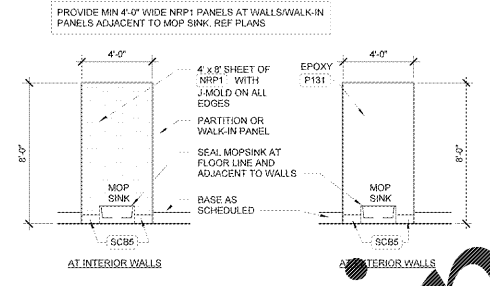


- SHEET NOTES**
- INTERIOR PLAN DIMENSIONS SHALL BE TO FACE OF STUD/CAU UNO
 - OWNER FURNISHED AND INSTALLED ITEMS SHOWN DASHED UNO
 - REF SHEET A5.5 FOR FIXTURE HEIGHTS AND CLEARANCE
 - RATED WALLS ARE TO BE SEALED TO DECK. VERTICAL JOINTS AT CMU/GYPSUM BOARD WALLS ARE TO BE SEALED BOTH SIDES. WALL PENETRATIONS SUCH AS BAR JOISTS, PIPING, CONDUIT, DUCTWORK, ETC ARE TO BE SEALED PER FIRE STOP MANUFACTURERS RECOMMENDATIONS
 - REF SHEET A7 FOR SCHEDULE FINISH KEY
 - EXTEND ALL PROTECTIVE SURFACING TO PLASTIC LAMINATE WAINSCOT BEHIND BASE
 - REF A9 AND A9.1 FOR MILLWORK AND COUNTERTOP
- KEYNOTE LEGEND**
- 1.08 ANCHOR LOCKERS
 - 6.17 PROTECTIVE WALL SURFACING WITH OUTSIDE CORNER
 - 9.02 4" HIGH WALL
 - 9.02 HOLLOW METAL DOOR AND FRAME
 - 8.06 ALUMINUM STOREFRONT
 - 9.08 5/8" GYPSUM BOARD
 - 10 DRESSING MIRROR
 - 11 ALUMINUM CORNER GUARD
 - INSECT CONTROL UNIT. TYPE NOTED ADJACENT TO UNIT. REF. N1 FOR LEGEND AND NOTES.

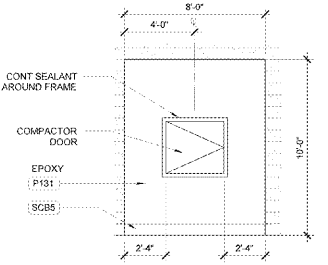
14 LOCKER ANCHORAGE
3/4" = 1'-0"



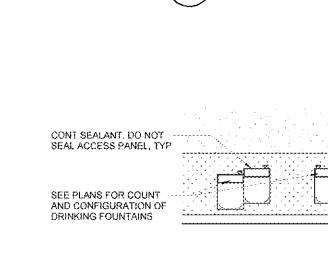
13 ELEVATION AT MOP SINK
1/4" = 1'-0"



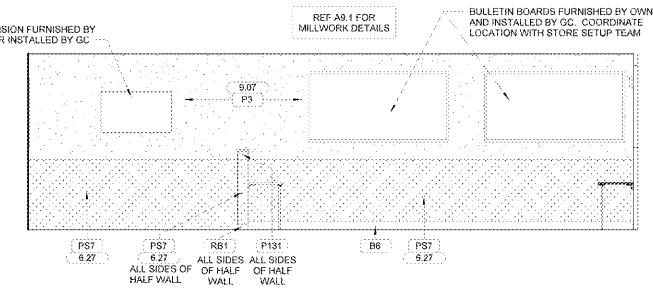
12 COMPACTOR CHUTE ELEVATION
1/4" = 1'-0"



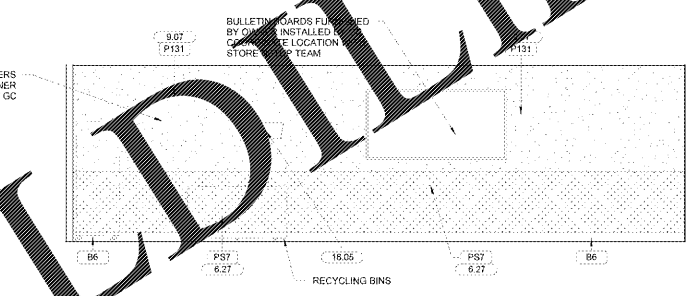
11 DRINKING FOUNTAIN ELEVATION
1/4" = 1'-0"



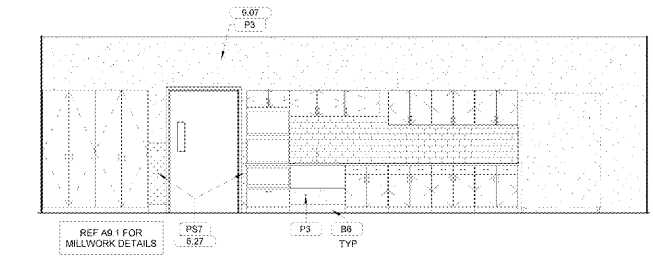
10 BREAK ROOM ELEVATION
1/4" = 1'-0"



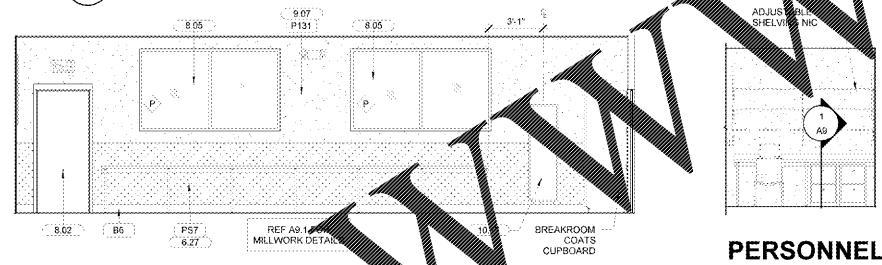
9 BREAK ROOM ELEVATION
1/4" = 1'-0"



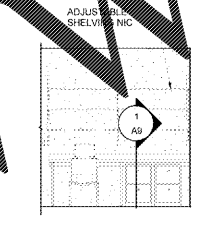
8 BREAK ROOM ELEVATION
1/4" = 1'-0"



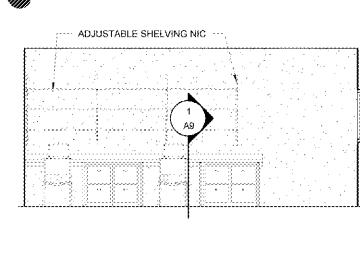
7 BREAK ROOM ELEVATION
1/4" = 1'-0"



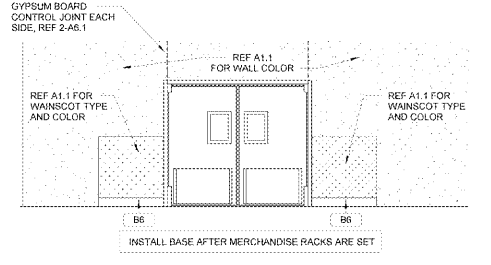
6 PERSONNEL ELEVATION
1/4" = 1'-0"



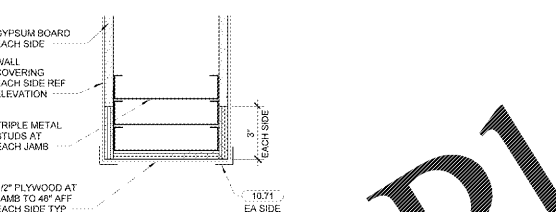
5 INVOICING ELEVATION
1/4" = 1'-0"



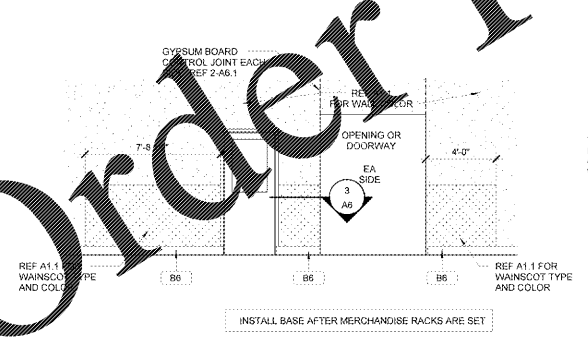
4 SALES WALL ELEVATION
1/4" = 1'-0"



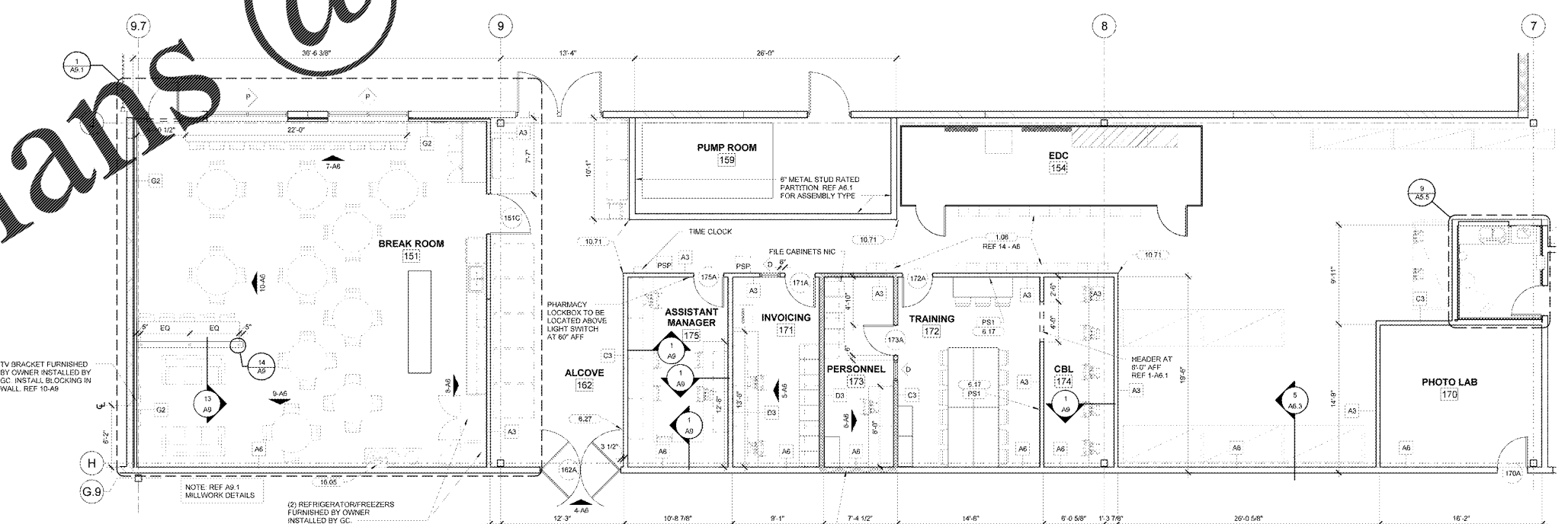
3 WALL END
3" = 1'-0"



2 SALES WALL ELEVATION
1/4" = 1'-0"



1 OFFICE PLAN
3/16" = 1'-0"



Walmart
LEESBURG, VIRGINIA

STORE NO. 1904-05
11/08/28 | PROJ. C-190-LS04-CL

ISSUE BLOCK

OTB	11/30/17
-----	----------

CHECKED BY: RW
DRAWN BY: EH
PROTO CYCLE: 04/28/17
DOCUMENT DATE: 09/13/17

BID SET NOT FOR CONSTRUCTION

OFFICE PLAN

SHEET: **A6**