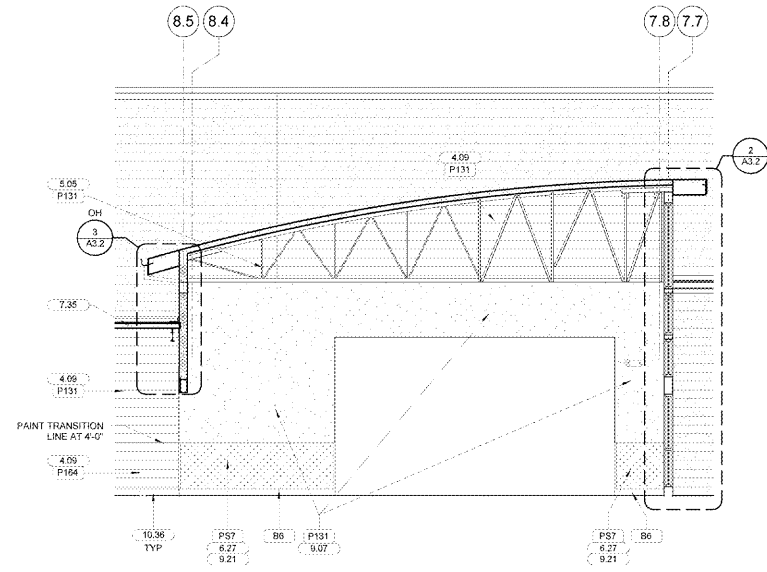
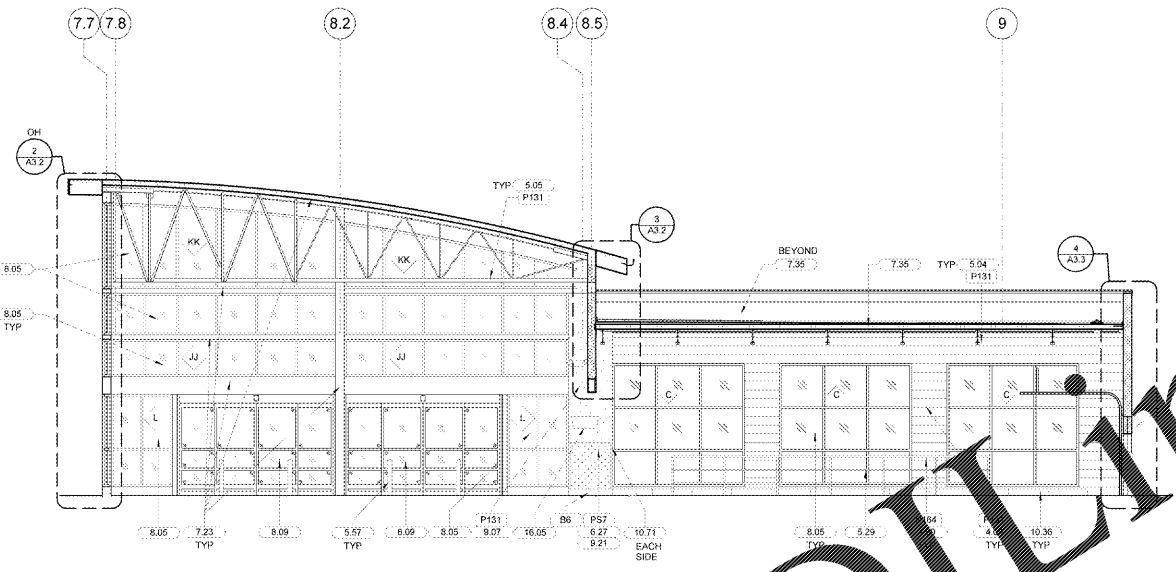


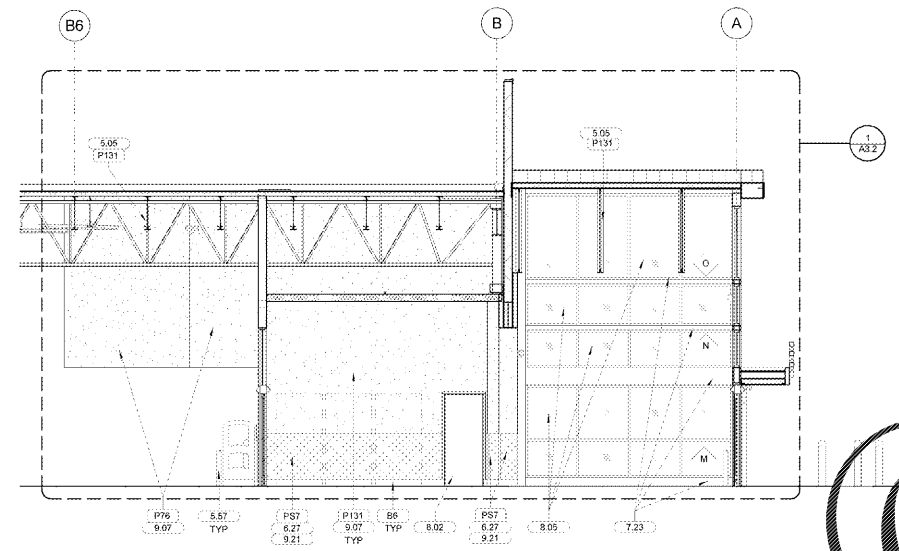
SHEET NOTES	
1.	INTERIOR PLAN DIMENSIONS ARE TO FACE OF STUD/CMU UNIT
2.	REF SHEET A7 FOR SCHEDULE FINISH KEY
3.	REF SHEET N4 FOR TACTILE SIGNAGE
KEYNOTE LEGEND	
4.09	SMOOTH FACE CMU
5.04	STEEL JOIST
5.06	JOIST GIRDER
5.29	GALVANIZED STEEL PIPE CART RAIL
5.67	3/2" STAINLESS STEEL BOLLARD, 4" OD FURNISHED BY OWNER, INSTALLED BY GC
6.27	48" HIGH WAINSCOT
7.23	ALUMINUM BRAKE FORMED CLADDING
7.35	ROOFING MEMBRANE
8.02	HOLLOW METAL DOOR AND FRAME
8.06	ALUMINUM STOREFRONT
8.09	AUTOMATIC SLIDING ENTRANCE DOORS
9.07	5/8" GYPSUM BOARD
9.21	5/8" ABSULUMENENT GYPSUM BOARD TO AFF
9.96	GYPSUM BOARD HORIZONTAL JOINT
10.36	6X6" RUBBER CART STOP
10.37	3 1/2" HIGH IMPACT HEAVY DUTY EPDM CORNER KICK HOLD STRIP
10.71	ALUMINUM TRUCKER CHAIR
16.05	INSECT CONTROL TYPE NOTED ADJACENT TO UNIT, REF KEYNOTE LEGEND AND NOTES



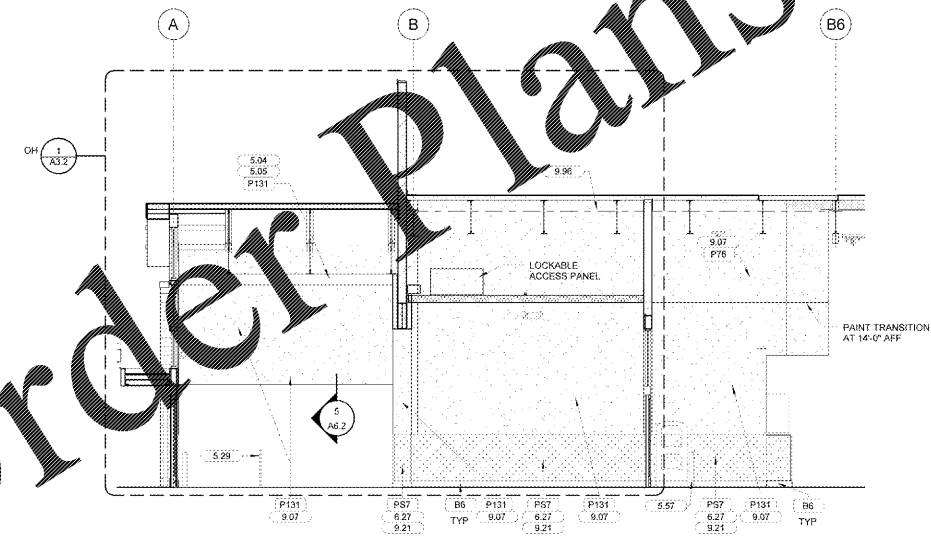
**5 GM VESTIBULE SECTION**  
3/16" = 1'-0"



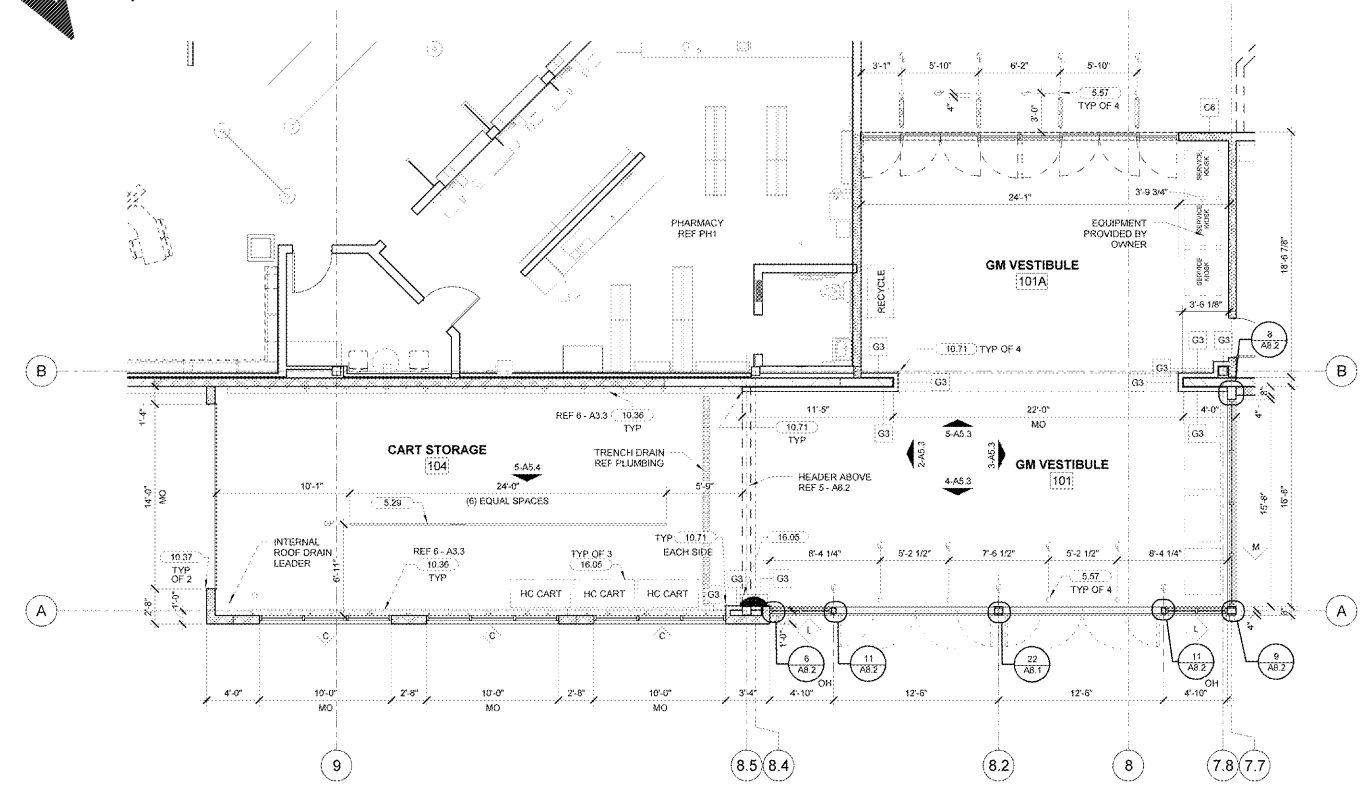
**4 GM VESTIBULE SECTION**  
3/16" = 1'-0"



**3 GM VESTIBULE SECTION**  
3/16" = 1'-0"



**2 GM VESTIBULE SECTION**  
3/16" = 1'-0"



**1 GM VESTIBULE PLAN**  
3/16" = 1'-0"

**RETAIL DESIGN COLLABORATIVE**

STIPULATION FOR RETAIL DESIGN COLLABORATIVE: THIS DRAWING AND INFORMATION IS THE PROPERTY OF WALMART STORES, INC. AND IS NOT TO BE REPRODUCED, COPIED, OR TRANSMITTED IN ANY FORM OR BY ANY MEANS, WITHOUT THE WRITTEN PERMISSION OF WALMART STORES, INC. FOR MORE INFORMATION, VISIT US AT [www.walmart.com](http://www.walmart.com). JOB NUMBER: 1196828 | PROJECT: C-195-SGL-CL

CONSULTANTS

**Walmart**  
LEESBURG, VIRGINIA  
STORE NO. 1904-05  
JOB NUMBER: 1196828 | PROJECT: C-195-SGL-CL

ISSUE BLOCK	
OTB	11/30/17

CHECKED BY: RW  
DRAWN BY: EH  
PROTO CYCLE: 04/28/17  
DOCUMENT DATE: 09/13/17

**BID SET  
NOT FOR  
CONSTRUCTION**

**ENLARGED  
GM  
VESTIBULE**

SHEET: **A5.3**

Order Plans @ [www.LDinline.com](http://www.LDinline.com)