

KEYNOTES	
6.20	PROVIDE 2X4 CONTINUOUS HORIZONTAL WOOD BLOCKING AT 7' AND 10' AFF INSIDE FULL LENGTH OF WALL
10.05	PAPER TOWEL DISPENSER: SURFACE MOUNTED
10.28	SOAP DISPENSER: MOUNT AS SHOWN IN PLAN WITH TOP OF DISPENSER 46" AFF

SHEET NOTES	
1.	INTERIOR PLAN DIMENSIONS ARE TO FACE OF STUD / CMU / PRECAST UNO
2.	WALMART FURNISHED AND INSTALLED ITEMS SHOWN DASHED UNO

WALMART
LEESBURG, VIRGINIA

STORE NO. 1904
JOB NUMBER: 1706028
180-5268 PHOTO

CONSULTANTS

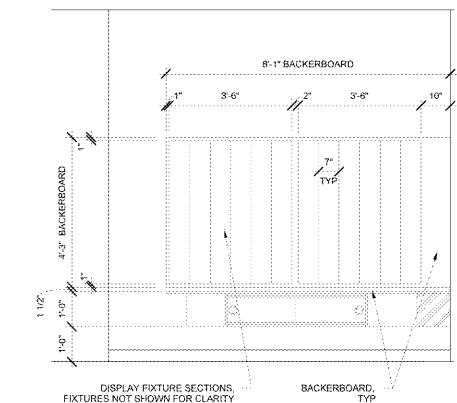
ISSUE BLOCK
OTB 11/30/17

CHECKED BY: RW
DRAWN BY: EH
FILE NAME: 190-A5.2
PROTO CYCLE: 042817
DOCUMENT DATE: 09/13/17

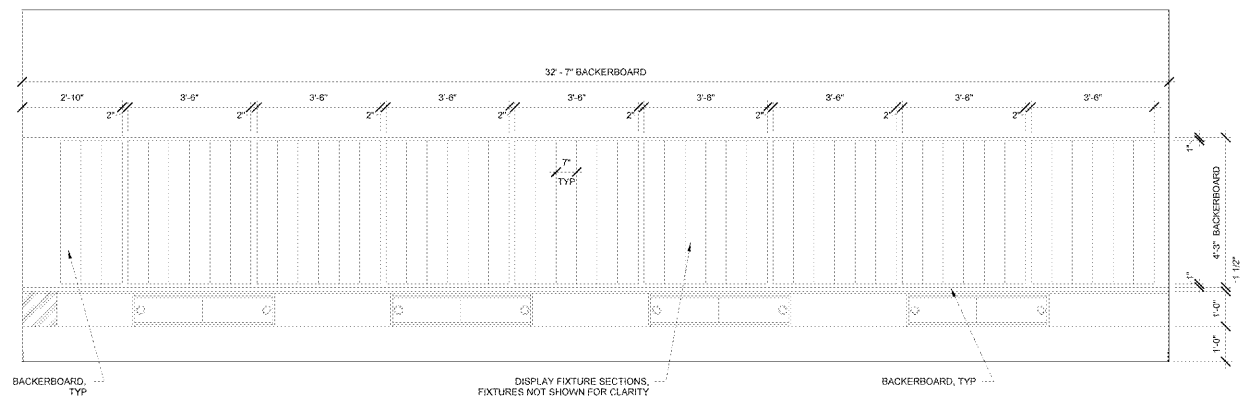
BID SET NOT FOR CONSTRUCTION

VISION CENTER

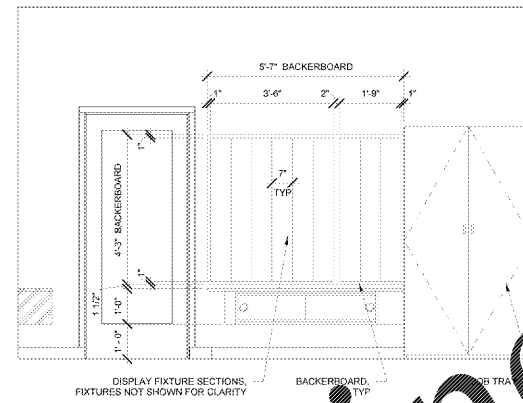
SHEET: A5.2



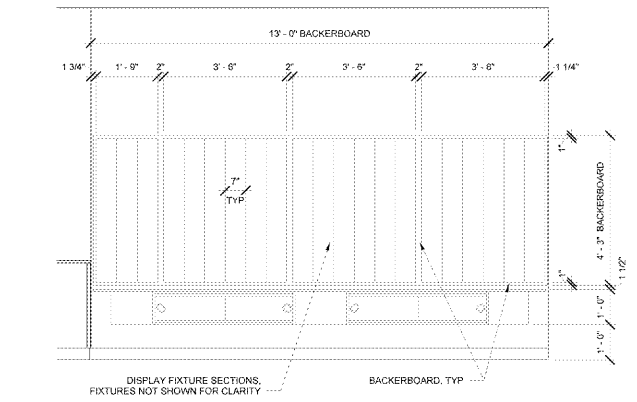
10 DISPLAY FIXTURE ELEVATION
1/2" = 1'-0"



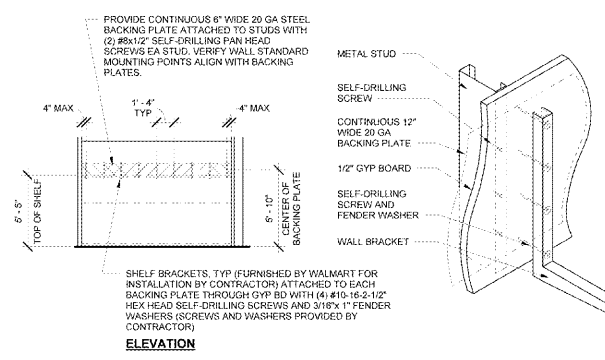
9 DISPLAY FIXTURE ELEVATION
1/2" = 1'-0"



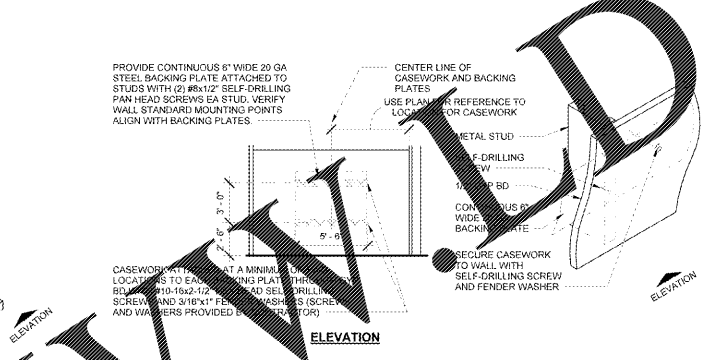
8 DISPLAY FIXTURE ELEVATION
1/2" = 1'-0"



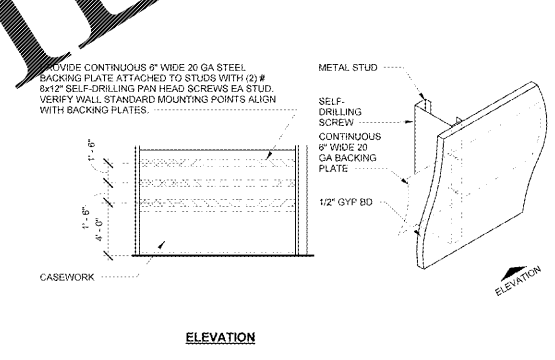
7 DISPLAY FIXTURE ELEVATION
1/2" = 1'-0"



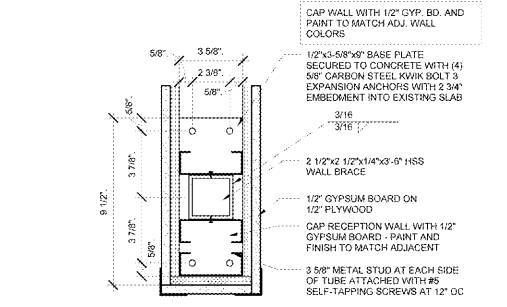
6C CONTACTS SHELF BRACKET
3/16" = 1'-0"



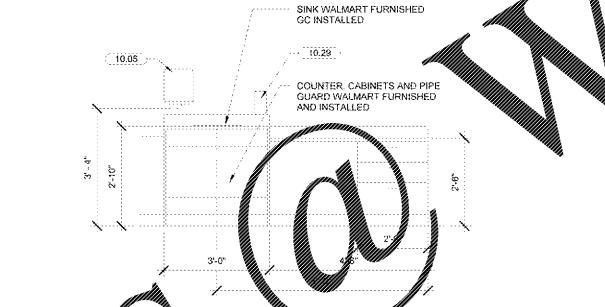
6B TRIAL CONTACT CASE
3/16" = 1'-0"



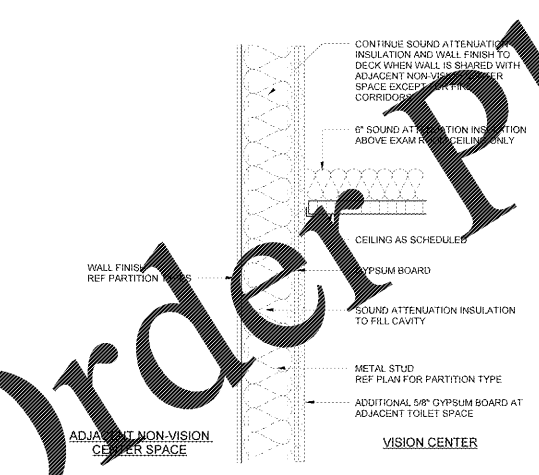
6A ADJUSTMENTS SHELF STANDARDS
3/16" = 1'-0"



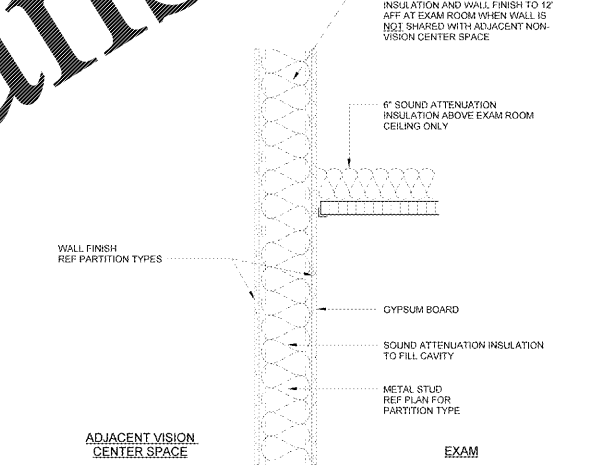
5 RECEPTION WALL
NTS



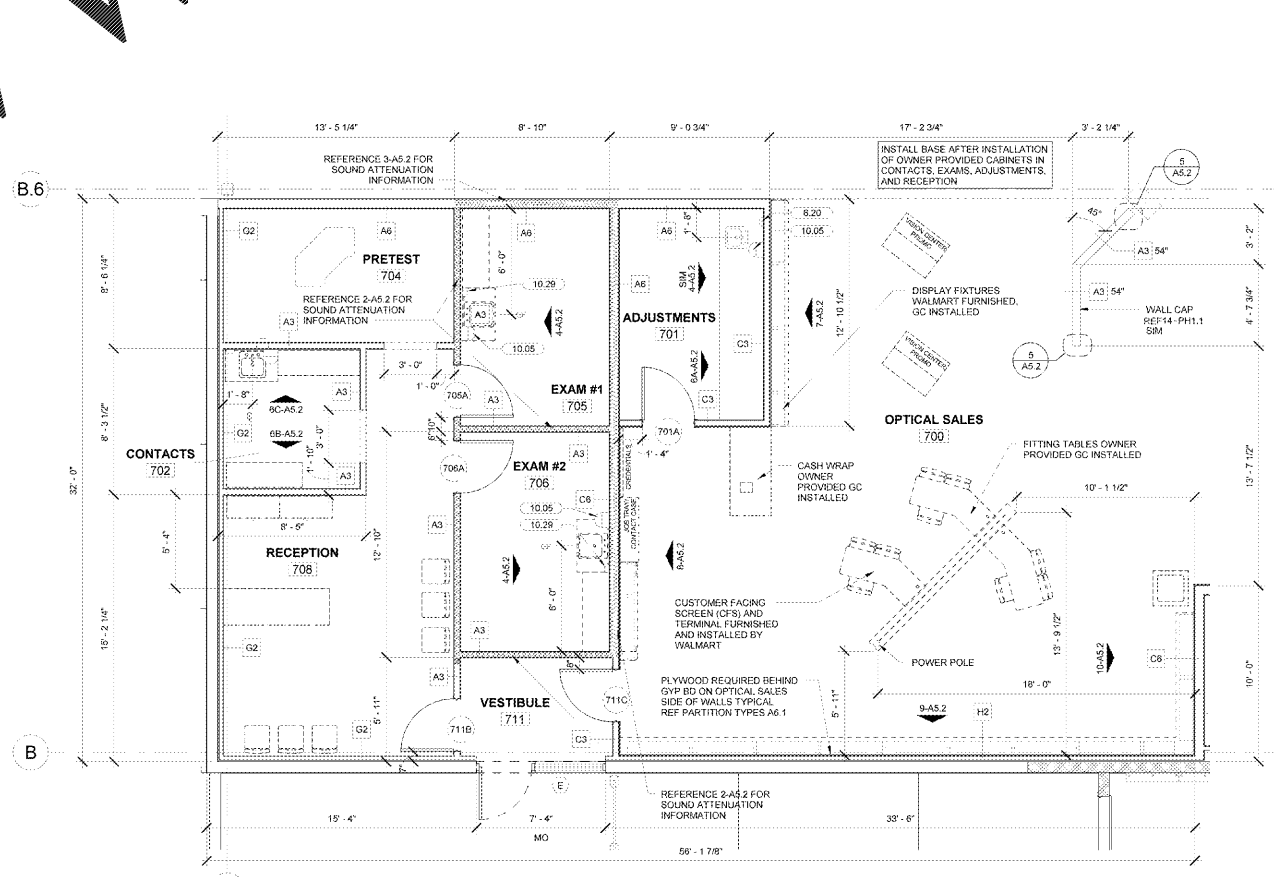
4 EXAM SINK ELEVATION
1/2" = 1'-0"



3 SOUND ATTENUATION AT VISION CENTER SHARED WALL
1 1/2" = 1'-0"



2 SOUND ATTENUATION AT EXAM ROOM WALLS
1 1/2" = 1'-0"



1 FLOOR PLAN
1/4" = 1'-0"

Order Plans @ WalmartOnline.com

© 2017 Walmart Stores, Inc. All rights reserved. Walmart, the Walmart logo, and the Walmart name are trademarks of Walmart Stores, Inc. in the United States and other countries. Other brands and product names are the property of their respective owners.