

STIPULATION FOR THE USER: THE DRAWING AND INFORMATION CONTAINED HEREIN ARE THE PROPERTY OF RETAIL DESIGN COLLABORATIVE. ANY REUSE, REPRODUCTION, OR DISTRIBUTION OF THIS INFORMATION WITHOUT THE WRITTEN PERMISSION OF RETAIL DESIGN COLLABORATIVE IS STRICTLY PROHIBITED. ANY REUSE, REPRODUCTION, OR DISTRIBUTION OF THIS INFORMATION WITHOUT THE WRITTEN PERMISSION OF RETAIL DESIGN COLLABORATIVE IS STRICTLY PROHIBITED.

CONSULTANTS

Walmart
LEESBURG, VIRGINIA
 STORE NO. 1904-05
 1/19/2017 | PROJECT: C-190-506-CL
 JOB NUMBER:

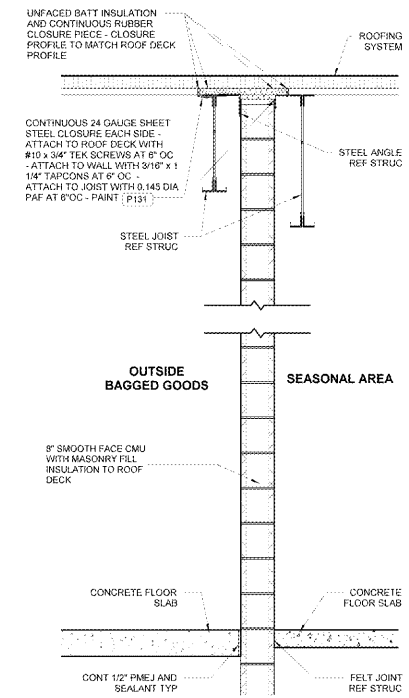
ISSUE BLOCK

OTB	11/30/17

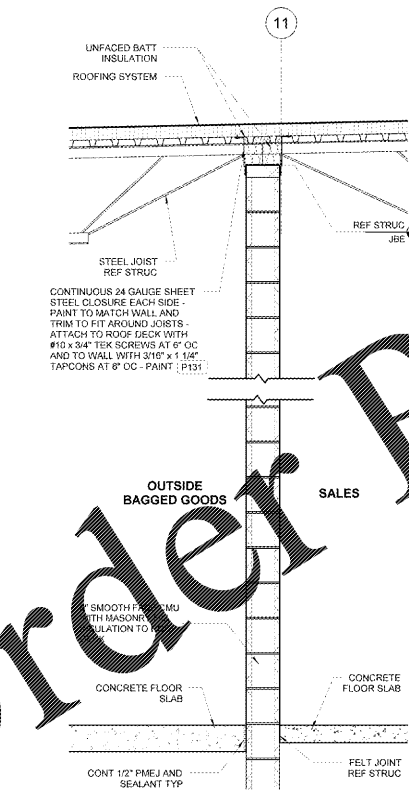
CHECKED BY: RW
 DRAWN BY: EH
 PROTO CYCLE: 04/28/17
 DOCUMENT DATE: 09/13/17

BID SET NOT FOR CONSTRUCTION

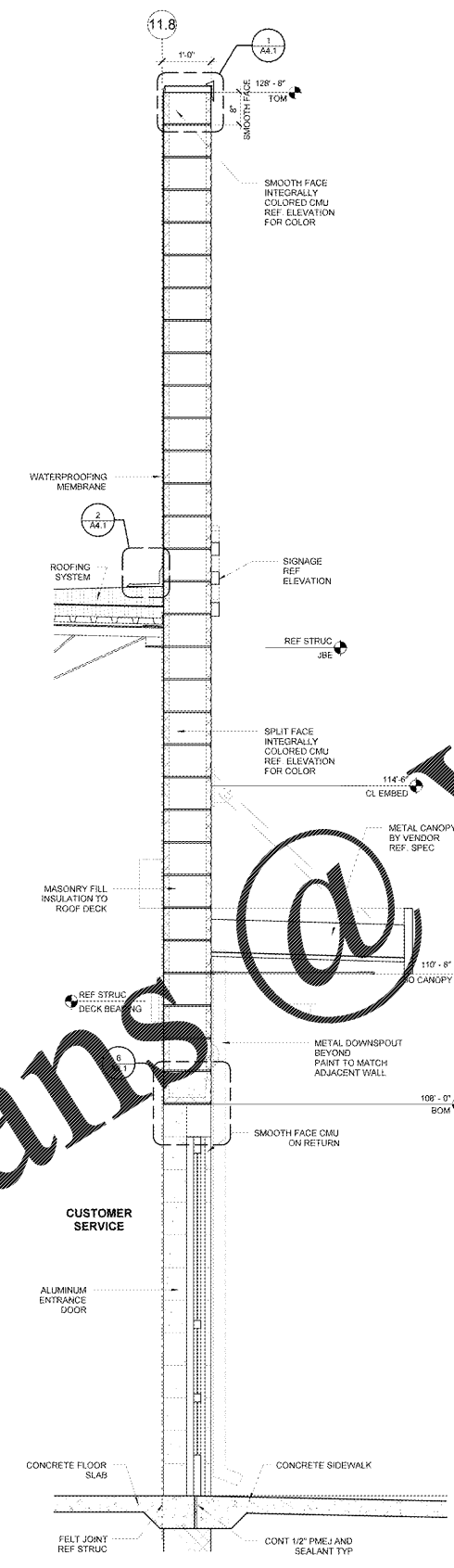
EXTERIOR WALL SECTIONS



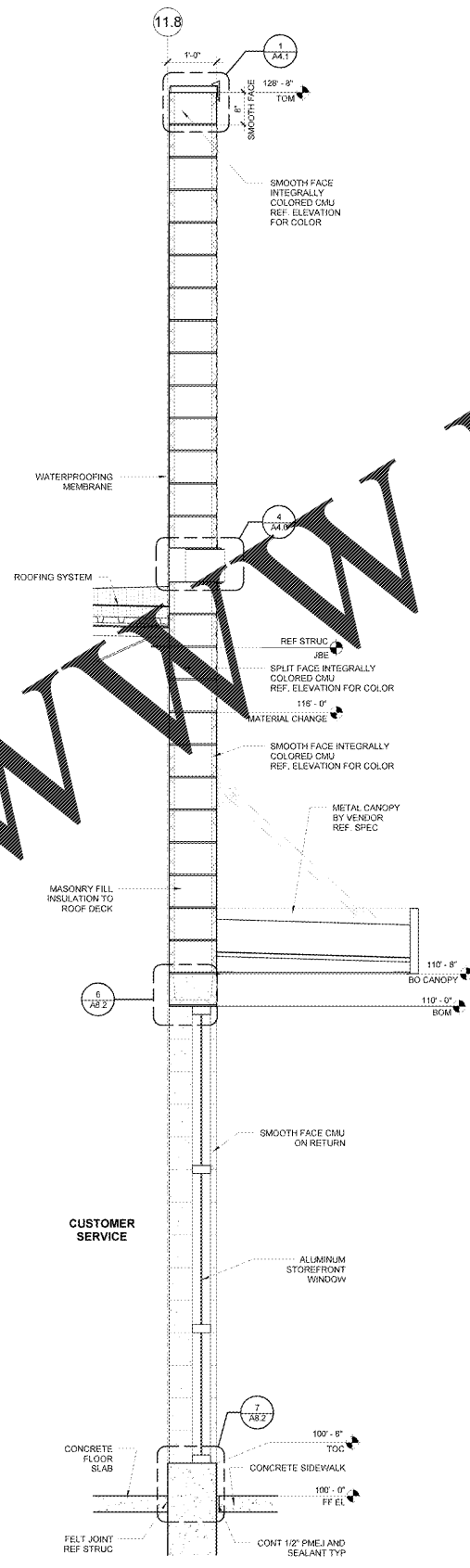
6 WALL SECTION
 3/4\"/>



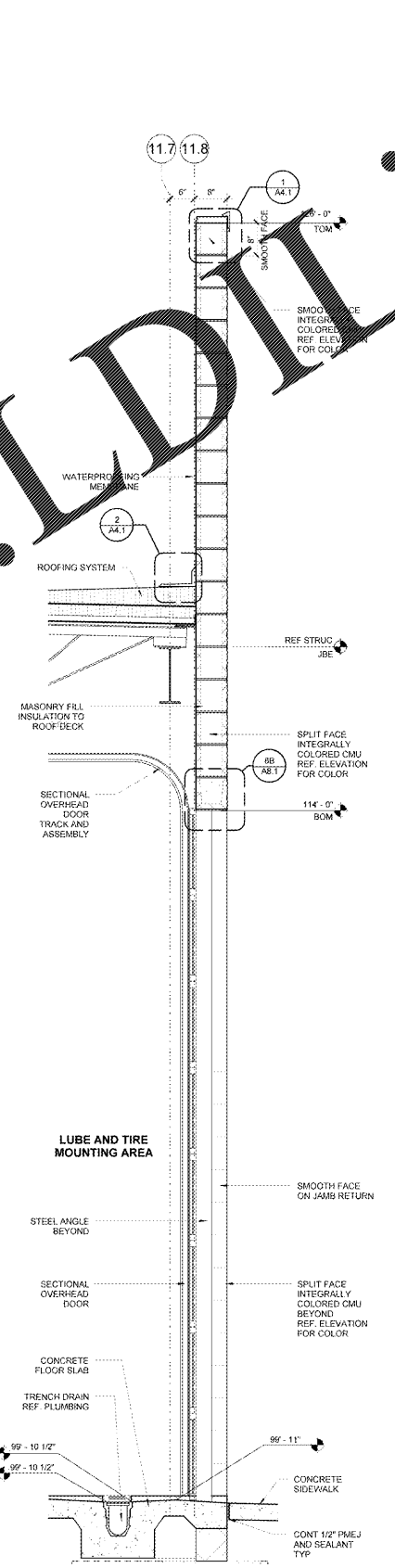
5 WALL SECTION
 3/4\"/>



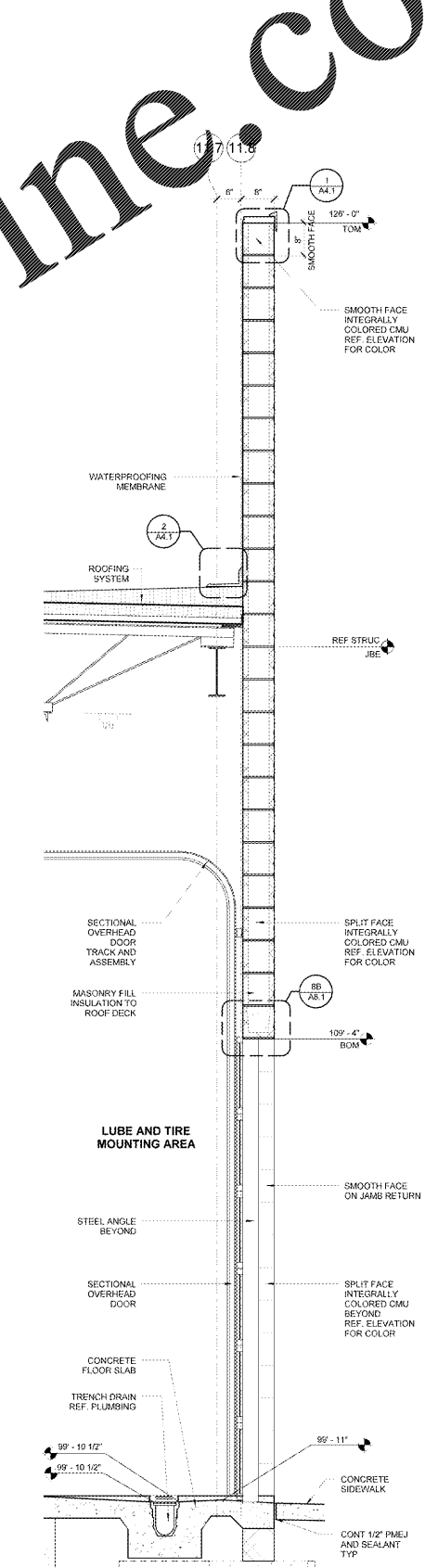
4 AUTO CENTER WALL SECTION
 3/4\"/>



3 AUTO CENTER WALL SECTION
 3/4\"/>



2 AUTO CENTER WALL SECTION
 3/4\"/>



1 AUTO CENTER WALL SECTION
 3/4\"/>

Order Plans @ www.LDLine.com