

FINISH LEGEND	
	WALK-IN PANEL
	GYPSUM BOARD
	ACT (REF A7 FOR TYPE)
	SHADE CLOTH
	OPEN TO STORE

SHEET NOTES	
1.	FIRE, MECHANICAL, ELECTRICAL ITEMS SHOWN OR REFLECTED ON THIS DRAWING OR COORDINATION PURPOSES ONLY. FIRE, MECHANICAL, AND ELECTRICAL SYMBOLS SHALL BE USED AS SHOWN ON THE DRAWING.

RETAIL DESIGN COLLABORATIVE
 Retail Design Collaborative
 11000 Westpark Drive, Suite 200
 Dallas, TX 75244
 972.333.8888
 retaildesigncollaborative.com

STIPULATION FOR THE USER: THESE DRAWINGS AND SPECIFICATIONS ARE PREPARED BY THE CONSULTANT AND ARE TO BE USED ONLY FOR THE PROJECT AND SITE SPECIFICALLY IDENTIFIED HEREIN. THE CONSULTANT MAKES NO WARRANTY, REPRESENTATION OR GUARANTEE, EXPRESS OR IMPLIED, AS TO THE ACCURACY, COMPLETENESS, OR SUFFICIENCY OF THESE DRAWINGS AND SPECIFICATIONS. THE USER SHALL BE RESPONSIBLE FOR OBTAINING ALL NECESSARY PERMITS AND REGULATORY APPROVALS. THE CONSULTANT SHALL NOT BE RESPONSIBLE FOR ANY DELAYS OR COSTS INCURRED BY THE USER DUE TO OMISSIONS, INADEQUACIES, OR INACCURACIES IN THESE DRAWINGS AND SPECIFICATIONS.

CONSULTANTS

Walmart
 LEESBURG, VIRGINIA
 STORE NO. 1904-05
 11/04/2017 | PROJECT: C-190-LS04-01
 JOB NUMBER:

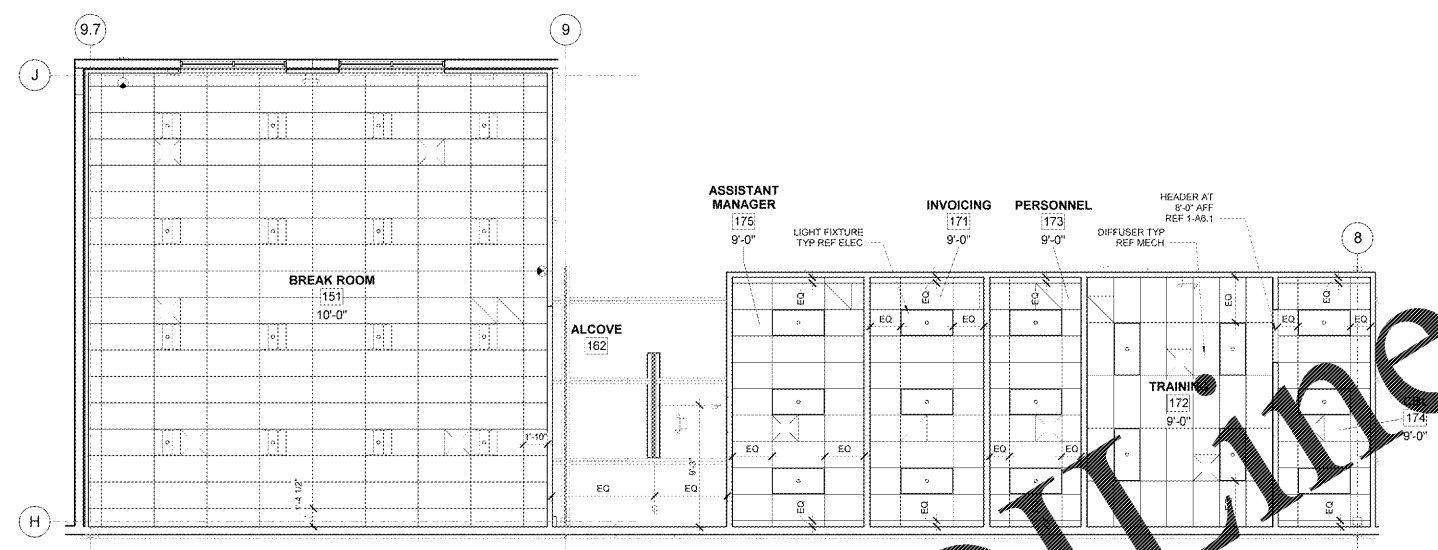
ISSUE BLOCK	
OTB	11/30/17

CHECKED BY: RW
 DRAWN BY: EH
 PROTO CYCLE: 04/28/17
 DOCUMENT DATE: 09/13/17

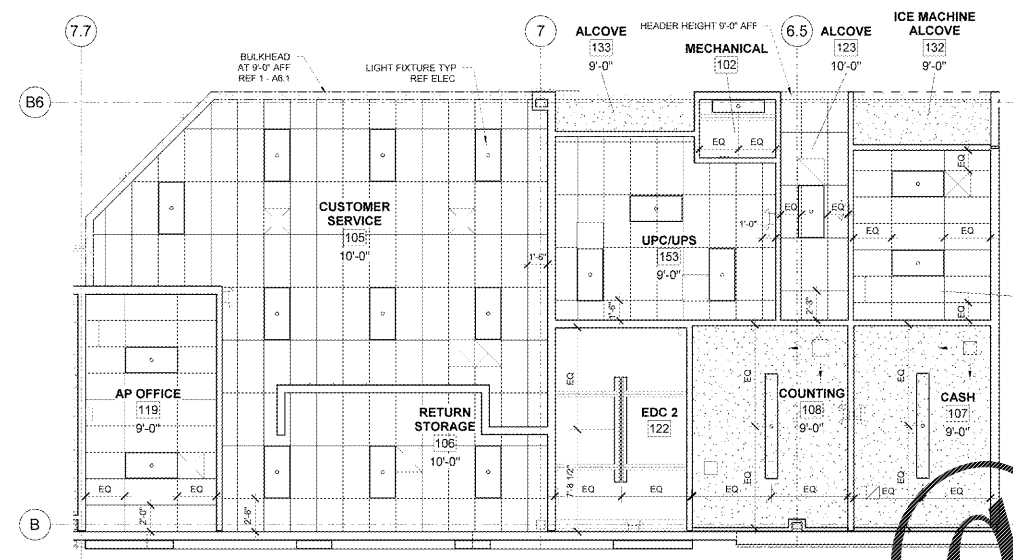
BID SET NOT FOR CONSTRUCTION

ENLARGED REFLECTED CEILING PLANS

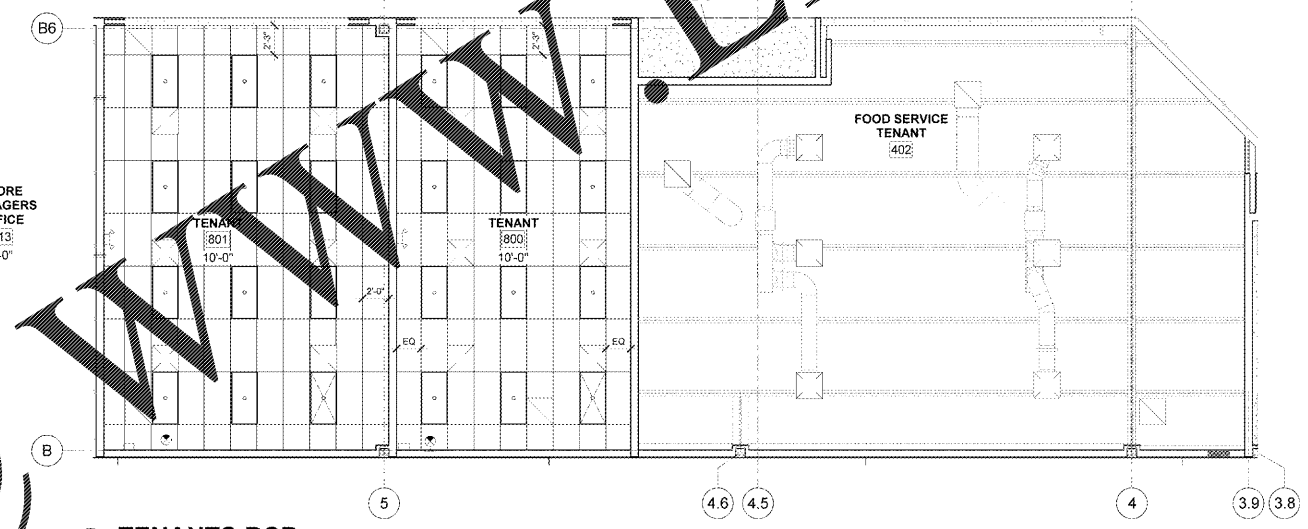
SHEET: **A1.3**



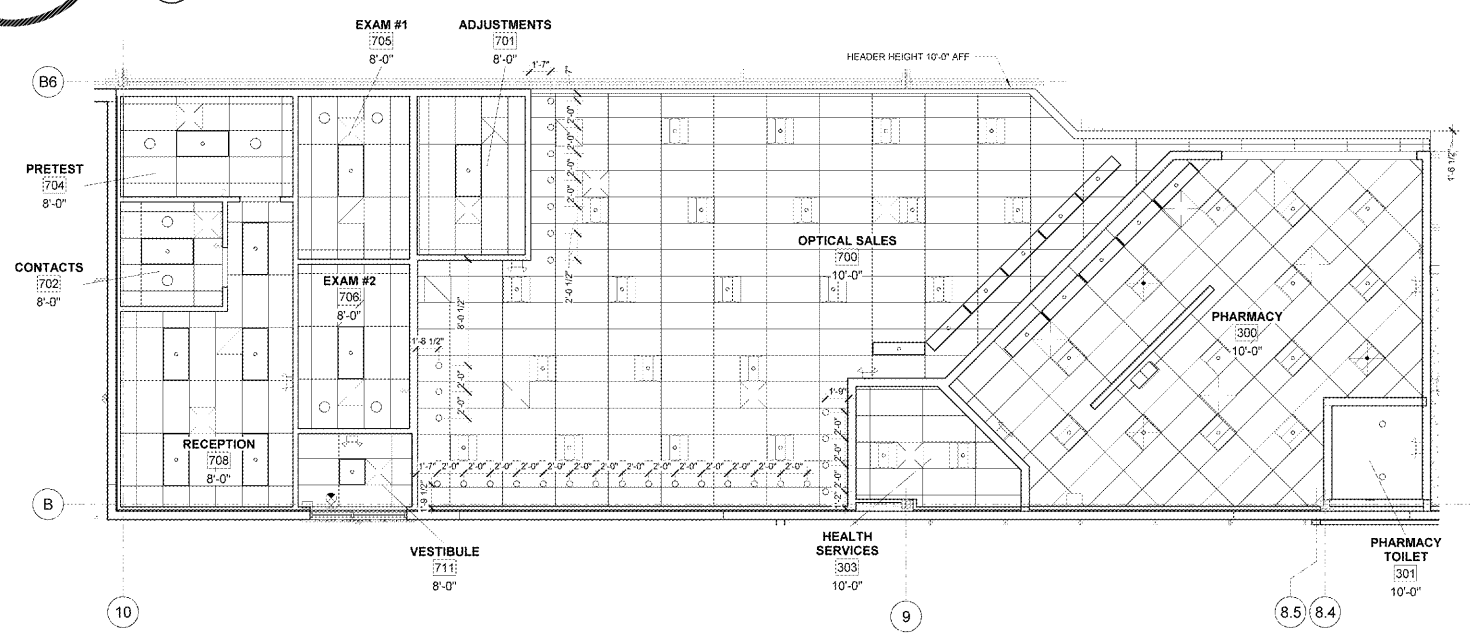
3 REAR OFFICE AND BREAK ROOM RCP
 3/16" = 1'-0"



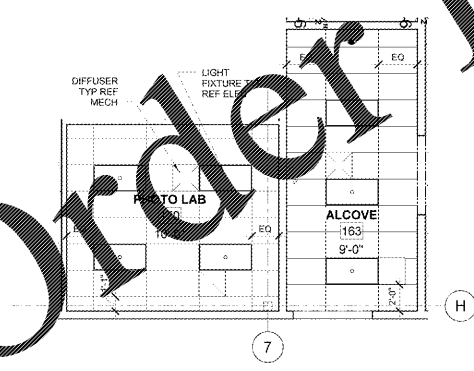
5 CUSTOMER SERVICE AND FRONT OFFICE RCP
 5/16" = 1'-0"



2 TENANTS RCP
 2/16" = 1'-0"



1 PHARMACY & OPTICAL RCP
 1/16" = 1'-0"



4 PHOTO LAB RCP
 4/16" = 1'-0"

Order Plans @

WWW.LDILINE.COM

11/04/2017 11:30 AM
 © 2017 Walmart Retail Design Collaborative