

FINISH LEGEND

P126	KNOCKOUT ORANGE SW#8885
P126U	KNOCKOUT ORANGE SW#8885 (URETHANE)
PS	SAFETY YELLOW

CANOPY GENERAL NOTES

- FABRIC
- CANOPY FURNISHED BY WALMART, INSTALLED BY CANOPY VENDOR.
 - LIGHT FIXTURES TO BE PROVIDED BY VENDOR AND INSTALLED BY G.C.
 - FOOTINGS TO BE INSTALLED BY VENDOR AND DESIGNED BY WALMART STRUCTURAL ENGINEER.
 - CANOPY STEEL TO BE PREFINISHED BY VENDOR P126 - SW#8885 KNOCKOUT ORANGE METAL PANEL CENTER TYPE.
 - CANOPY FURNISHED BY WALMART, INSTALLED BY CANOPY VENDOR.
 - LIGHT FIXTURES TO BE PROVIDED AND INSTALLED BY VENDOR.
 - ELECTRICAL FOR LIGHTS BY G.C.
 - FOOTINGS TO BE INSTALLED BY G.C. AND DESIGNED BY VM STRUCTURAL ENGINEER.
 - PAINTED BY G.C. P126 - SW#8885 KNOCKOUT ORANGE.

SIGNAGE GENERAL NOTES

- CANOPY AND BUILDING SIGNAGE FURNISHED BY WALMART AND INSTALLED BY OTHERS. SITE DIRECTIONAL SIGNS FURNISHED BY WALMART AND INSTALLED BY G.C., POLE FURNISHED AND INSTALLED BY G.C. PAVEMENT SIGNAGE FURNISHED AND INSTALLED BY G.C.
- GENERAL CONTRACTOR RESPONSIBILITIES:
 - REMOVE EXISTING BUILDING SIGNAGE AS INDICATED.
 - BY END OF FIRST WEEK OF CONSTRUCTION, REVIEW EXISTING CONDITIONS TO NOT MATCH SIGN ATTACHMENT DETAILS SHOWN. REQUEST APPROVAL FROM CONSTRUCTION MANAGER TO SUBMIT RFI IN ACCORDANCE WITH SECTION 0125. NOTE DIFFERENCES IN CONSTRUCTION, INCLUDING DIMENSIONS, AND INCLUDE PHOTOGRAPHS FOR CLARIFICATION.
 - PROVIDE JUNCTION BOXES AND CIRCUITRY TO NEW "PANEL" AND "KIOSK" SIGNAGE.
 - VERIFY VOLTAGE AT CIRCUITS FEEDING SIGNAGE. REFER TO ELECTRICAL.
 - MAKE FINAL TERMINATIONS ON LIGHTS SIGNAGE.
 - INSTALL CHECK-IN KIOSKS AND COORDINATE WITH VENDOR FOR SPECIAL PROJECTS. WHEN REQUIRED BY ALL G.C. RESPONSIBLE TO ACQUIRE PERMITS FOR INSTALLATION OF SITE SIGNS. FOLLOW PERMITS STANDARDS FOR PERMITS AND SIGN. FOLLOW PER SIGN STANDARDS FOR PERMITS AND SIGN.
 - ALL SIGN PLACARDS PROVIDED BY WALMART. ALL PAINT FOR PAVEMENT MARKINGS ARE SUPPLIED BY WALMART AND PAINTED BY THE GENERAL CONTRACTOR.



STIPULATION FOR THE USE OF THIS DOCUMENT IS LIMITED TO THE PROJECT AND SITE SPECIFICALLY IDENTIFIED IN THE CONTRACT DOCUMENTS. ANY OTHER USE OF THIS DOCUMENT WITHOUT THE WRITTEN PERMISSION OF RETAIL DESIGN COLLABORATIVE IS STRICTLY PROHIBITED. RETAIL DESIGN COLLABORATIVE SHALL NOT BE RESPONSIBLE FOR ANY ERRORS OR OMISSIONS IN THIS DOCUMENT. RETAIL DESIGN COLLABORATIVE SHALL NOT BE RESPONSIBLE FOR ANY CONSTRUCTION VIOLATIONS OR VIOLATIONS OF ANY APPLICABLE CODES OR REGULATIONS. RETAIL DESIGN COLLABORATIVE SHALL NOT BE RESPONSIBLE FOR ANY DAMAGE TO PERSONS OR PROPERTY. RETAIL DESIGN COLLABORATIVE SHALL NOT BE RESPONSIBLE FOR ANY DELAYS OR COST INCREASES. RETAIL DESIGN COLLABORATIVE SHALL NOT BE RESPONSIBLE FOR ANY OTHER MATTERS. RETAIL DESIGN COLLABORATIVE SHALL NOT BE RESPONSIBLE FOR ANY OTHER MATTERS.

CONSULTANTS

Walmart
LEESBURG, VIRGINIA
STORE NO: 1504-05
JOB NUMBER: 1190628 | PHOTO: 191 SCL-QL

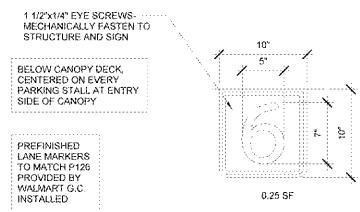
ISSUE BLOCK
OTB 11/30/17

CHECKED BY: RSV
DRAWN BY: EH
FILE NAME: 190SP3
PROTO CYCLE: 042817
DOCUMENT DATE: 09/13/17

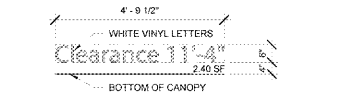
BID SET NOT FOR CONSTRUCTION

PICKUP DRIVE THRU METAL CANOPY 6-BAY

SHEET: SP3



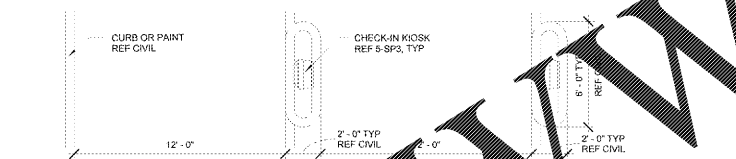
10 LANE MARKER SIGNAGE DETAIL
1 1/2" = 1'-0"



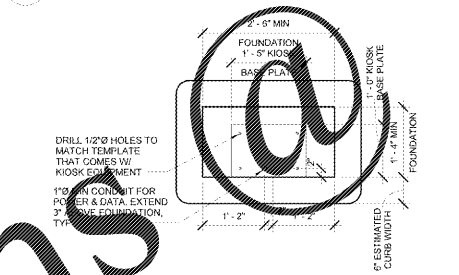
9 CANOPY CLEARANCE SIGNAGE
1/2" = 1'-0"



8 CANOPY SIGNAGE
1/2" = 1'-0"



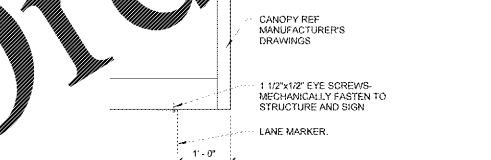
7 CHECK-IN KIOSK SITE PLAN
1/4" = 1'-0"



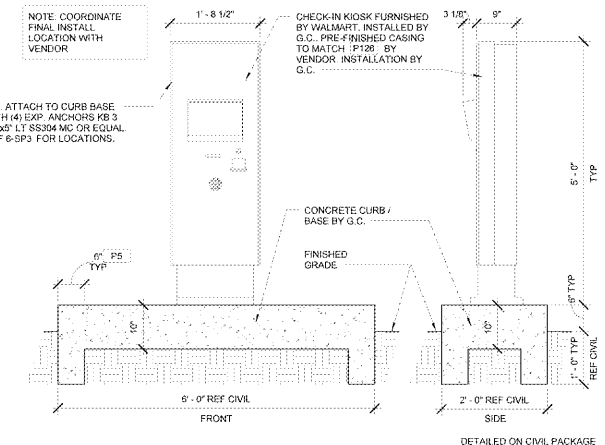
6 KIOSK DATA ANCHOR DETAIL
1/4" = 1'-0"



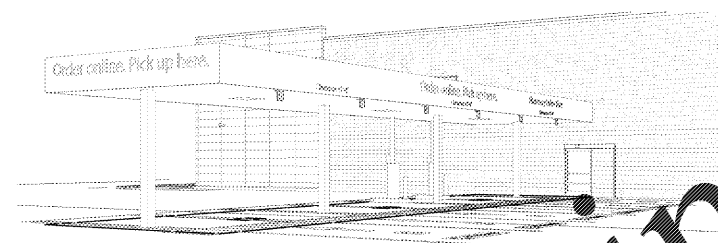
12 CANOPY PHARMACY DRIVE THRU SIGNAGE
1/2" = 1'-0"



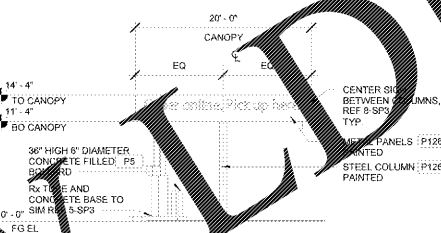
11 LANE MARKER ATTACHMENT DETAIL
3/4" = 1'-0"



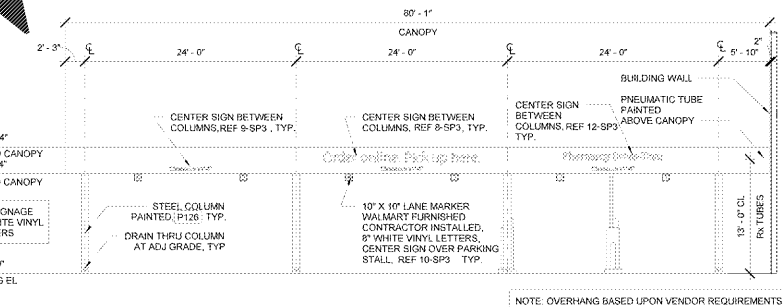
5 CHECK-IN KIOSK ELEVATION / SECTION
3/4" = 1'-0"



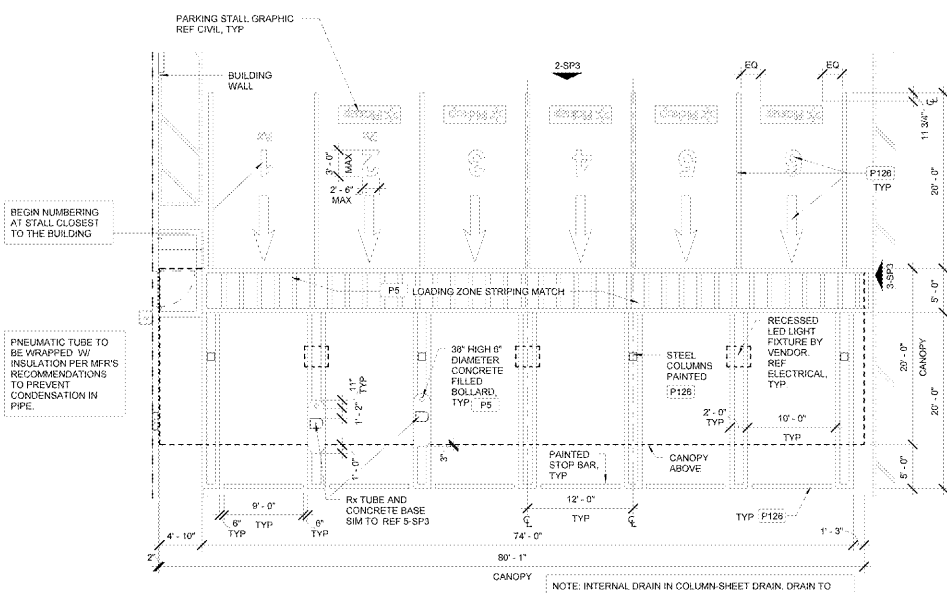
4 CANOPY PERSPECTIVE - METAL



2 CANOPY ELEVATION - METAL
1/8" = 1'-0"



1 CANOPY SITE PLAN - METAL
1/8" = 1'-0"



1 CANOPY SITE PLAN - METAL
1/8" = 1'-0"

Order Plans

WWW.LDLINE.COM

C:\Users\ldline\OneDrive\Desktop\190SP3_Plan\190SP3_Plan.dwg, 11/30/17, 1:17:21 PM