

**Branch Panel: LL2E-1**

Location: \_\_\_\_\_ Volts: 120/208 Wye  
 Supply From: \_\_\_\_\_ Phases: 3  
 Mounting: Recessed Wires: 4  
 Enclosure: Type 1 A.I.C. Rating: 22000  
 Mains Type: M.L.O.  
 Mains Rating: 225 A  
 MCB Rating: \_\_\_\_\_

Notes:

Circuit Number	Circuit Description	Trip	Poles	A	B	C	Poles	Trip	Circuit Description	Circuit Number	
LL2E-1-1	Lighting	20 A	1	1650 VA	500 VA			1	20 A	Temp Control Power	LL2E-1-2
LL2E-1-3	Lighting	20 A	1		1026	360 VA		1	20 A	IT Receptacle	LL2E-1-4
LL2E-1-5	Power	20 A	1			1200	180 VA	1	20 A	Receptacle	LL2E-1-6
LL2E-1-7	Workstation Power	20 A	1	1200 VA	1200			1	20 A	Workstation Power	LL2E-1-8
LL2E-1-9	Workstation Power	20 A	1	1200	1200			1	20 A	Workstation Power	LL2E-1-10
LL2E-1-11	Workstation Power	20 A	1	1200 VA	1200			1	20 A	Workstation Power	LL2E-1-11
LL2E-1-13	Workstation Power	20 A	1	1200 VA	1200			1	20 A	Workstation Power	LL2E-1-12
LL2E-1-15	Workstation Power	20 A	1	1200	1200			1	20 A	Workstation Power	LL2E-1-16
LL2E-1-17	VAVZ-1 Power	20 A	3			1333	1833 VA	3	20 A	VAVZ-2 Power	LL2E-1-18
LL2E-1-19	--	--	--	1333 VA	1833			--	--	--	LL2E-1-20
LL2E-1-21	--	--	--		1333	1833		--	--	--	LL2E-1-22
LL2E-1-23	Copier Receptacles	20 A	1			540 VA	540 VA	1	20 A	Copier Receptacles	LL2E-1-24
LL2E-1-25	VFD-BCU2-01 Power	20 A	3	1008 VA	360 VA			1	20 A	Receptacle	LL2E-1-26
LL2E-1-27	--	--	--		1008	360 VA		1	20 A	Receptacle	LL2E-1-28
LL2E-1-29	--	--	--			1008	540 VA	1	20 A	Receptacle	LL2E-1-30
LL2E-1-31	Receptacle	20 A	1	360 VA	360 VA			1	20 A	Receptacle	LL2E-1-32
LL2E-1-33	Receptacle	20 A	1		360 VA	360 VA		1	20 A	Receptacle	LL2E-1-34
LL2E-1-35	Receptacle	20 A	1			360 VA	360 VA	1	20 A	Receptacle	LL2E-1-36
LL2E-1-37	Receptacle	20 A	1	540 VA	540 VA			1	20 A	Receptacle	LL2E-1-38
LL2E-1-39	Receptacle	20 A	1		180 VA	1200		1	20 A	Workstation Power	LL2E-1-40
LL2E-1-41	Workstation Power	20 A	1			1200	1200 VA	1	20 A	Workstation Power	LL2E-1-42
LL2E-1-43	IT Receptacle	20 A	1	360 VA	0 VA			1	20 A	Spare	LL2E-1-44
LL2E-1-45	Spare	20 A	1		0 VA	0 VA		1	20 A	Spare	LL2E-1-46
LL2E-1-47	Spare	20 A	1		0 VA	0 VA		1	20 A	Spare	LL2E-1-48
LL2E-1-49	Spare	20 A	1		0 VA	0 VA		1	20 A	Spare	LL2E-1-50
LL2E-1-51	Spare	20 A	1		0 VA	0 VA		1	20 A	Spare	LL2E-1-52
LL2E-1-53	Spare	20 A	1		0 VA	0 VA		1	20 A	Spare	LL2E-1-54
LL2E-1-55	Spare	20 A	1		0 VA	0 VA		1	20 A	Spare	LL2E-1-56
LL2E-1-57	Spare	20 A	1		0 VA	0 VA		1	20 A	Spare	LL2E-1-58
LL2E-1-59	Spare	20 A	1		0 VA	0 VA		1	20 A	Spare	LL2E-1-60
<b>Total Load:</b>				13364 VA	12820 VA						
<b>Total Amps:</b>				112 A	107 A						

Legend:

Load Classification	Connected Load	Demand Factor	Estimated Demand	Panel Totals
Lighting	2576 VA	125.00%	3220 VA	
Other	16800 VA	100.00%	16800 VA	<b>Total Conn. Load:</b> 38877 VA
Power	13021 VA	100.00%	13021 VA	<b>Total Est. Demand:</b> 39521 VA
Receptacle	6480 VA	100.00%	6480 VA	<b>Total Conn.:</b> 108 A
				<b>Total Est. Demand:</b> 110 A

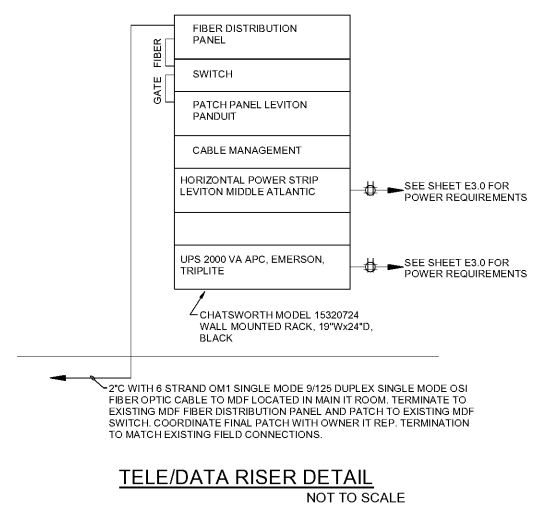
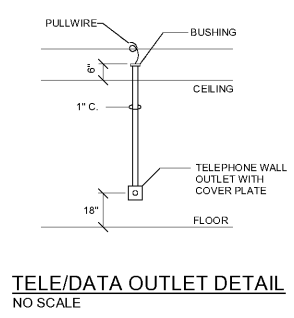
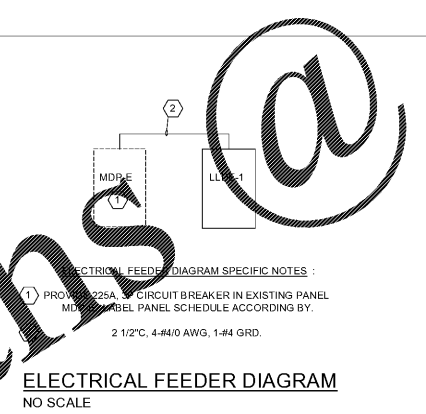
Notes:

**FIRE ALARM LEGEND**

SYMBOL	DESCRIPTION
[F]	MANUAL PULL STATION, MOUNT 48" A.F.F.
[F]	STROBE, MOUNT 80" A.F.F.
[F]	SPEAKER/STROBE, MOUNT 80" A.F.F.
[F]	CEILING MOUNT SPEAKER/STROBE
[H]	HEAT DETECTOR
[S]	SMOKE DETECTOR
[C]	CONTROL MODULE
[D]	DUCT DETECTOR
[R]	RELAY
[H]	HORN/STROBE
[FACP]	FIRE ALARM CONTROL PANEL
[ANN]	REMOTE ANNUNCIATOR
[FS]	WATERFLOW SWITCH
[TS]	TAMPER SWITCH
[B]	DURESS BUTTON, CONNECT TO PHONE SYSTEM

**ELECTRICAL LEGEND**

SYMBOL	DESCRIPTION
\$	SINGLE POLE SWITCH
\$	THREE WAY SWITCH
\$	WEATHERPROOF TOGGLE SWITCH
\$	DIMMER SWITCH
\$	WALL OCCUPANCY SWITCH
[H]	HOME RUN TO PANEL
[H]	CONCEALED WIRING
[D]	DISCONNECT SWITCH W/ HANDLE BLADES
[E]	ELECTRICAL RATING ELEMENT
[E]	ELECTRIC MOTOR/UNAPPROVED DISCONNECT SWITCH
[J]	JUNCTION BOX
[D]	DUPLEX RECEPTACLE MTD. 18" ABOVE FLOOR
[D]	DUPLEX RECEPTACLE MTD. ABOVE WORK SURFACE
[D]	DUPLEX RECEPTACLE WEATHERPROOF
[D]	DUPLEX RECEPTACLE W/GROUND FAULT INTERRUPTER
[D]	QUADRAPLEX RECEPTACLE MTD. 18" ABOVE FLOOR
[S]	STARTER/ DISCONNECT
[T]	TELE WALL OUTLET
[T]	DATA WALL OUTLET



LUCIEN T. VIVIEN JR. & ASSOCIATES  
 CONSULTING MEP ENGINEERS

3061 37TH STREET, METairie, LA 70002  
 P: 504.219.5400; F: 504.219.5412; www.ltvivien.com

**NANO**  
 ARCHITECTURE

REV	DATE	DESCRIPTION	BY

SEWERAGE AND WATER BOARD  
 OF NEW ORLEANS

**CONTRACT 8155**  
 ELECTRICAL STORAGE ROOM OFFICE RENOVATION

ELECTRICAL SCHEDULES &  
 DETAILS **E4.0**

DWG. No. 12148-W-60

DATE: 15 NOVEMBER 2017 SHEET: BID DOCUMENTS SHEET NO:

THE INFORMATION CONTAINED IN THIS DOCUMENT IS  
 PROPRIETARY TO LUCIEN T. VIVIEN, JR. & ASSOC., INC.  
 THE DOCUMENT MAY NOT BE DISCLOSED, DUPLICATED,  
 OR USED FOR ANY PURPOSE, IN WHOLE OR IN PART,  
 WITHOUT THE PRIOR WRITTEN CONSENT OF LUCIEN T.  
 VIVIEN, JR. & ASSOC., INC.

THESE PLANS AND SPECIFICATIONS HAVE BEEN  
 PREPARED BY OR UNDER MY CLOSE PERSONAL  
 SUPERVISION AND TO THE BEST OF MY KNOWLEDGE  
 AND BELIEF, THEY COMPLY WITH ALL CITY  
 REQUIREMENTS. WE ARE GENERALLY ADMINISTERING  
 THE WORK.

Order Plans @

WWW.LDOnline.com

10/27/2017 11:58:01 AM