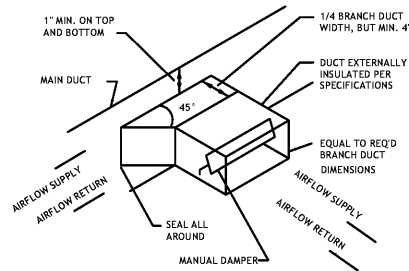
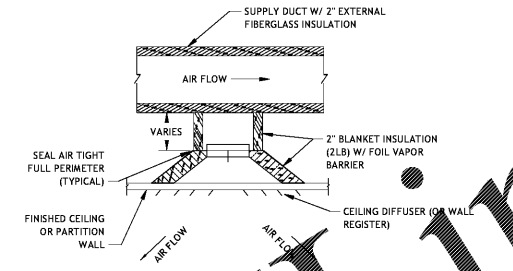


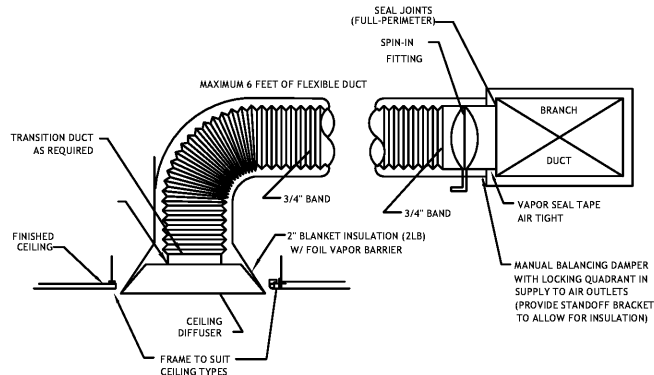
**1** TYPICAL DETAIL - AIR INTAKE LOUVER  
NOT TO SCALE



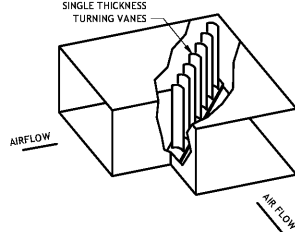
**2** TYPICAL DETAIL - BRANCH TAKE-OFF FITTING  
NOT TO SCALE



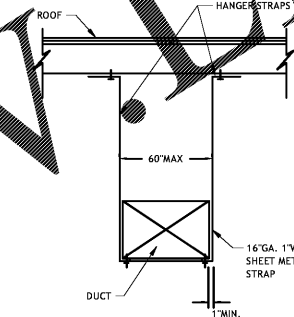
**3** TYPICAL DETAIL - CEILING DIFFUSER  
NOT TO SCALE



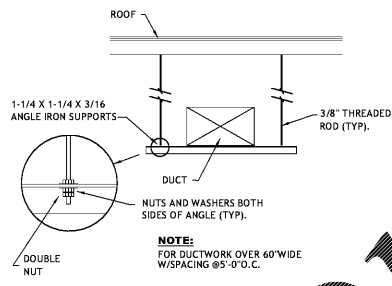
**4** TYPICAL DETAIL - DIFFUSER, GRILLE, REGISTER DUCT CONNECTION  
NOT TO SCALE



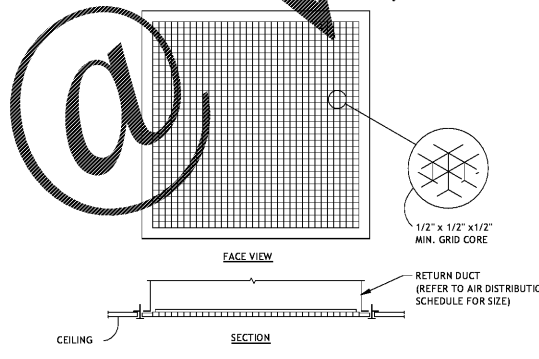
**5** TYPICAL DETAIL - DUCTWORK ELBOW  
NOT TO SCALE



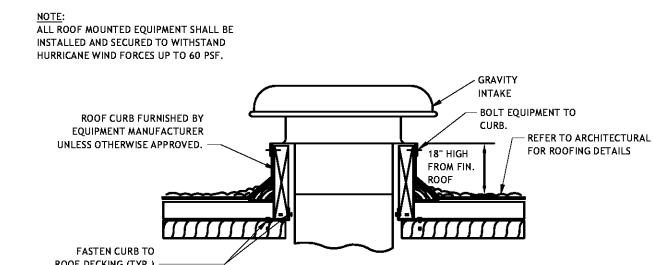
**6** TYPICAL DETAIL - DUCTWORK SUPPORT (HANGER STRAPS)  
NOT TO SCALE



**7** TYPICAL DETAIL - DUCTWORK SUPPORT (TRAPEZE)  
NOT TO SCALE



**8** TYPICAL DETAIL - RETURN AIR DIFFUSER (EGG CRATE)  
NOT TO SCALE



**9** TYPICAL DETAIL - GRAVITY INTAKE  
NOT TO SCALE

- NOTES**
1. FULL FACE WITH FRAME FOR LAY-IN CEILING.
  2. NOT USED.
  3. SIZE VARIES, REFER TO PLANS.
  4. REFER TO ARCHITECTURAL DRAWINGS FOR EXACT CEILING SYSTEM DETAILS.

Order Plans

@

WWW.DIline.com

**HUSEMAN & Associates**  
Consulting Engineers

MECHANICAL, ELECTRICAL, PLUMBING FIRE PROTECTION  
2020 N. I-10 SERVICE RD.  
SUITE 200 METairie LA 70002  
504-885-1111 FAX 504-885-2122

Job No. 12148-01      Designed By: Designer  
Drawn By: Aufer      Checked By: Checker

<b>NANO ARCHITECTURE</b> RESIDUAL ARCHITECTS - FRENCHVILLE	
REV	DATE DESCRIPTION BY
<b>SEWERAGE AND WATER BOARD OF NEW ORLEANS</b>	
<b>CONTRACT 8155</b>	
ELECTRICAL STORAGE ROOM OFFICE RENOVATION	
HVAC DETAILS <span style="float: right;"><b>M7.2</b></span>	
<b>DWG. No. 12148-W-60</b>	
DATE: 15 NOVEMBER 2017	SET NO: BID DOCUMENTS SHEET NO:

10/23/2017 3:54 PM