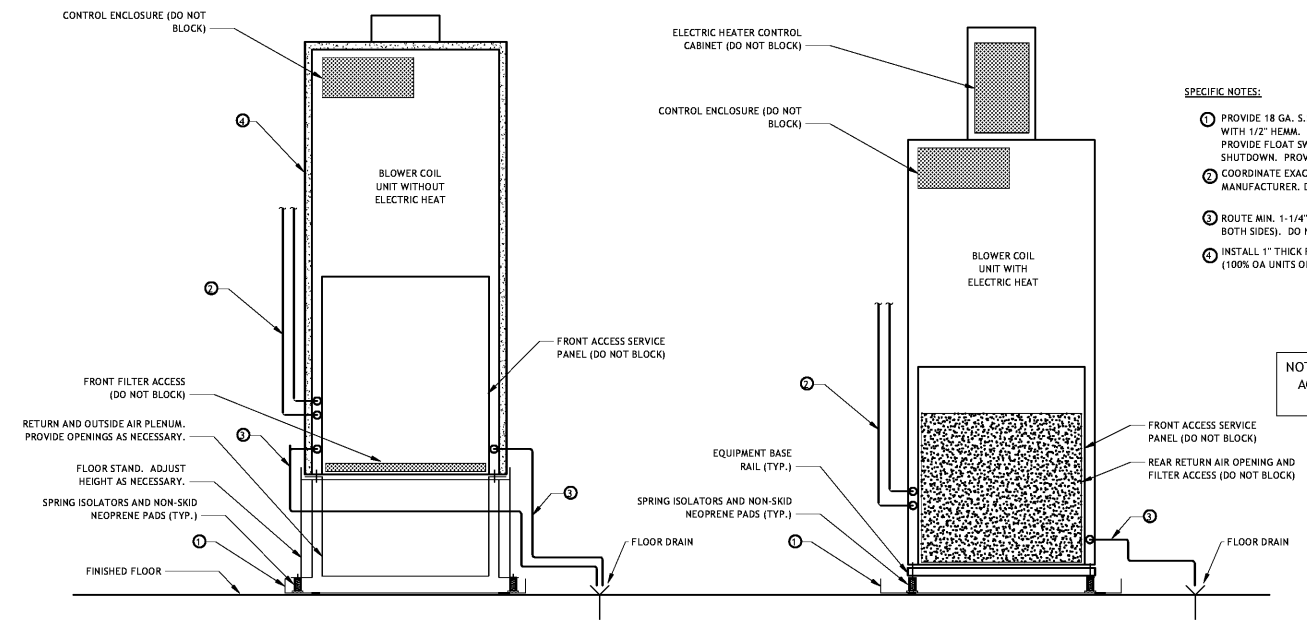


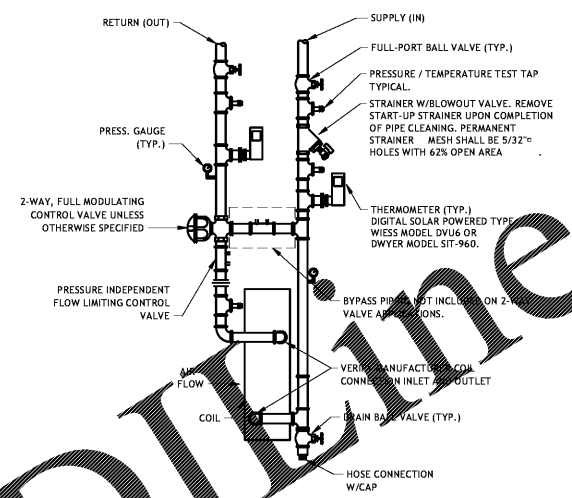
A B C D E F G H K L M



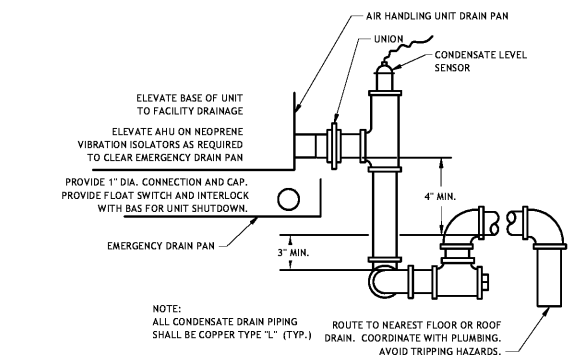
1 TYPICAL DETAIL - BCU INSTALLATION
NOT TO SCALE

- SPECIFIC NOTES:**
- 1 PROVIDE 18 GA. S.S. ALL WELDED EMERGENCY PAN. SIDES SHALL BE MIN. 2" WITH 1/2" HEAVY. PAN SHALL EXTEND 4" (MIN.) BEYOND ALL SIDES OF UNIT. PROVIDE FLOAT SWITCH IN PAN. INTERLOCK FLOAT SWITCH WITH UNIT SHUTDOWN. PROVIDE ALARM TO BAS SYSTEM.
 - 2 COORDINATE EXACT LOCATION OF CHILLED WATER PIPING WITH EQUIPMENT MANUFACTURER. DO NOT BLOCK EQUIPMENT SERVICE ACCESS.
 - 3 ROUTE MIN. 1-1/4" COND. LINE TO NEAREST EXISTING FLOOR DRAIN (TYP. BOTH SIDES). DO NOT BLOCK EQUIPMENT AND FILTER ACCESS.
 - 4 INSTALL 1" THICK FLEXIBLE ELASTOMERIC FOAM INSULATION TO ENTIRE CABINET HOUSING (100% OA UNITS ONLY). COORDINATE WITH EQUIPMENT MANUFACTURER.

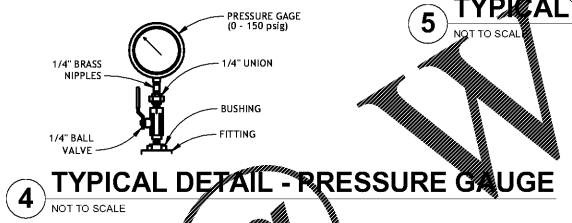
NOT ALL PIPING, VALVES AND ACCESSORIES SHOWN FOR CLARITY



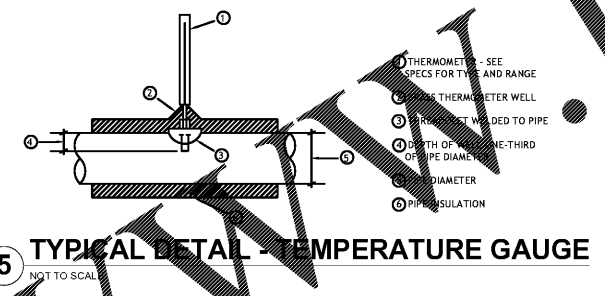
2 TYPICAL DETAIL - HYDRONIC COOLING OR HEATING COIL PIPING
NOT TO SCALE



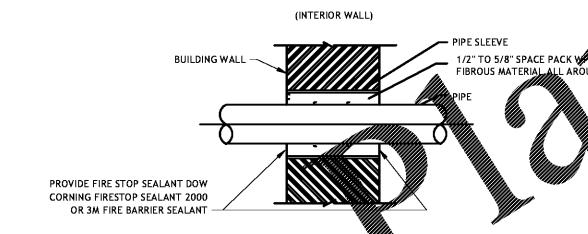
3 TYPICAL DETAIL - CONDENSATE DRAIN
NOT TO SCALE



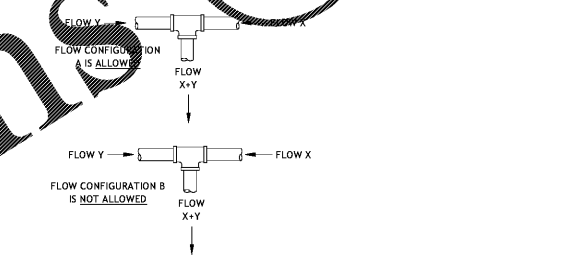
4 TYPICAL DETAIL - PRESSURE GAUGE
NOT TO SCALE



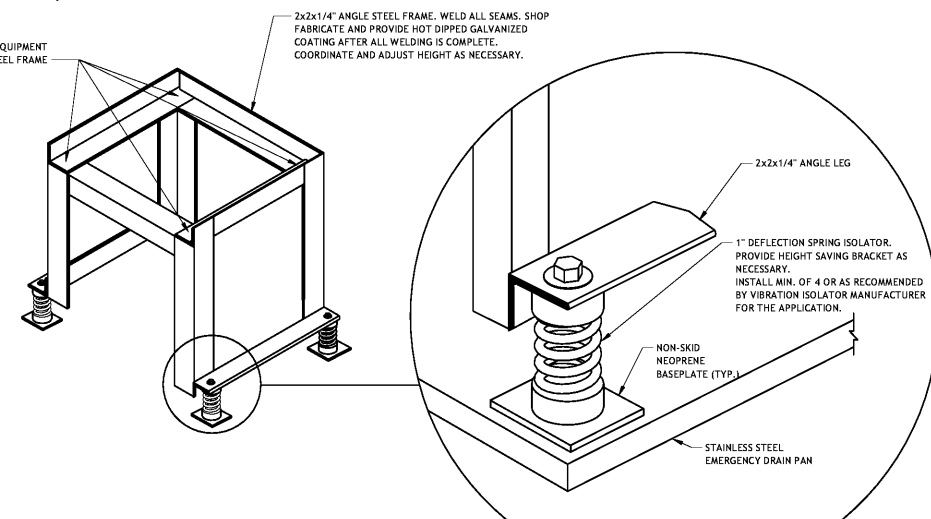
5 TYPICAL DETAIL - TEMPERATURE GAUGE
NOT TO SCALE



6 TYPICAL DETAIL - WALL SLEEVE PIPE PENETRATION (INTERIOR)
NOT TO SCALE



7 TYPICAL DETAIL - TEE PIPING FLOW CONFIGURATION
NOT TO SCALE



8 TYPICAL DETAIL - BCU FLOOR STAND (SPRING ISOLATORS)
NOT TO SCALE

Order Plans @

WWW.LDIDLINE.COM

NANO ARCHITECTURE RESOLVER ARCHITECTS - FORT LAUDERDALE	
REV	DATE DESCRIPTION BY
SEWERAGE AND WATER BOARD OF NEW ORLEANS	
CONTRACT 8155	
ELECTRICAL STORAGE ROOM OFFICE RENOVATION	
HVAC DETAILS M7.1	
DWG. No. 12148-W-60	
DATE: 15 NOVEMBER 2017	SET NO: BID DOCUMENTS

HUSEMAN & Associates
Consulting Engineers

MECHANICAL, ELECTRICAL, PLUMBING, FIRE PROTECTION
3825 N. I-10 SERVICE RD.
SUITE 200 METairie, LA 70002
504-885-1111 FAX 504-885-2122

Job No. 12148-01 Designer: Designer
Drawn By: AUFER Checked By: Checker

10/23/2017 3:58 PM

A B C D E F G H K L M