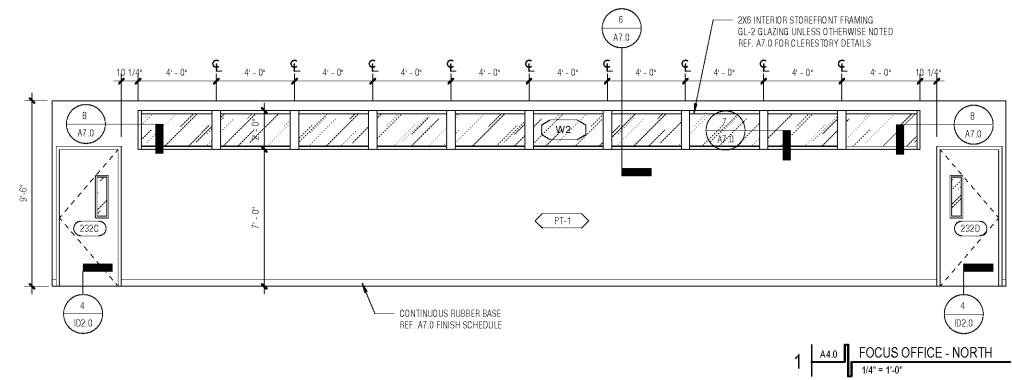
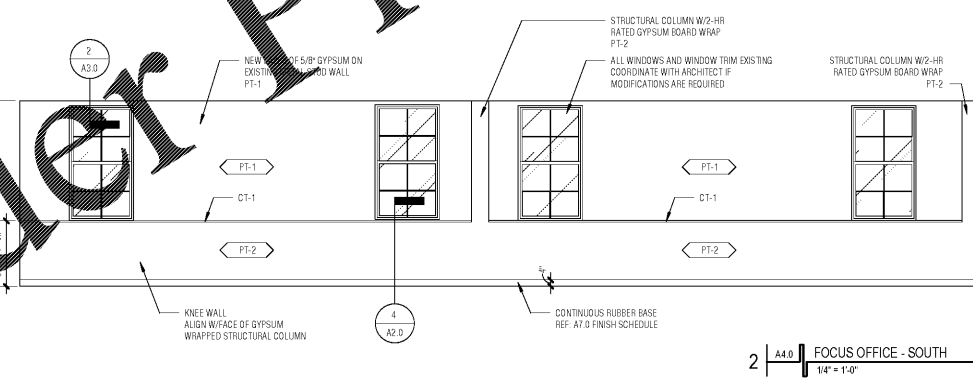
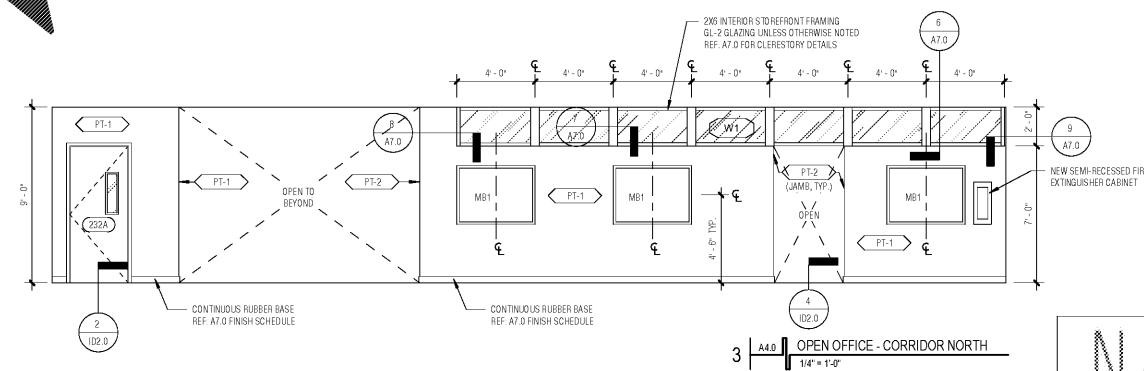
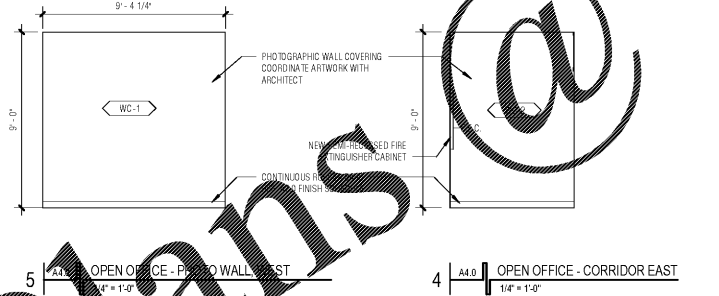


INTERIOR ELEVATION NOTES

1. VERIFY ALL DIMENSIONS ON PLANS
2. SEE FINISH SCHEDULE FOR FINISHES AND PAINT SELECTIONS
3. REFER TO REFLECTED CEILING PLAN FOR CEILING HEIGHTS
4. ALL WALLS TO HAVE A LEVEL 5 FINISH
5. ALL VINYL OR RUBBER BASE IS TO BE CONTINUOUS ROLL TYPE WITH SEAMING TO OCCUR ONLY AT INSIDE CORNERS OR AT LEAST 12" FROM WRAPPED OUTSIDE CORNER.
6. REFER TO SHEET A1.0 FOR TYPICAL MOUNTING HEIGHTS
7. CONTRACTOR SHALL PROVIDE BLOCKING IN WALL AS REQUIRED FOR ACCESSORIES. ALL MOUNTING HEIGHTS AND LOCATIONS SHALL BE VERIFIED IN FIELD PRIOR TO INSTALLATION OF WALL MOUNTED ACCESSORIES.
8. CONTRACTOR SHALL COORDINATE WALL MOUNTED ACCESSORIES WITH ASSOCIATED SUB CONTRACTORS (ELECTRICAL, MECHANICAL, BUT NOT LIMITED TO ELECTRICAL CONTRACTORS) PRIOR TO INSTALLATION, BUT NOT LIMITED TO ELECTRICAL CONTRACTORS PRIOR TO INSTALLATION.
9. REFER TO ID SHEETS FOR ADDITIONAL INFORMATION

WWW.LDILine.com



NANO ARCHITECTURE
RESASR ARCHITECTS FURNITURE

REV	DATE	DESCRIPTION	BY

SEWERAGE AND WATER BOARD OF NEW ORLEANS

CONTRACT 8155

ELECTRICAL STORAGE ROOM OFFICE RENOVATION

INTERIOR ELEVATIONS **A4.0**

DR: SJ
INC:
SK: KK
AP: TD
SCALE: 1/4" = 1'-0"
DATE: 15 NOVEMBER 2017 SETTING: BID DOCUMENTS SHEET NO:

DWG. No. 12148-W-60

Order Plans @

11/15/2017 4:58 PM