

A B C D E F G H K L M

GRAPHIC LEGEND

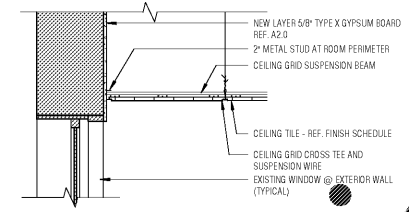
- EXISTING WALLS, PARTITIONS, COLUMNS, FIXTURES, EQUIPMENT, ETC. TO REMAIN
- NEW WALLS, PARTITIONS, COLUMNS, FIXTURES, EQUIPMENT, ETC.
- EXISTING WALLS, PARTITIONS, COLUMNS, FIXTURES, EQUIPMENT, ETC. TO BE REMOVED
- EXISTING 1 HOUR FIRE RATED PARTITION

RCP GRAPHIC LEGEND

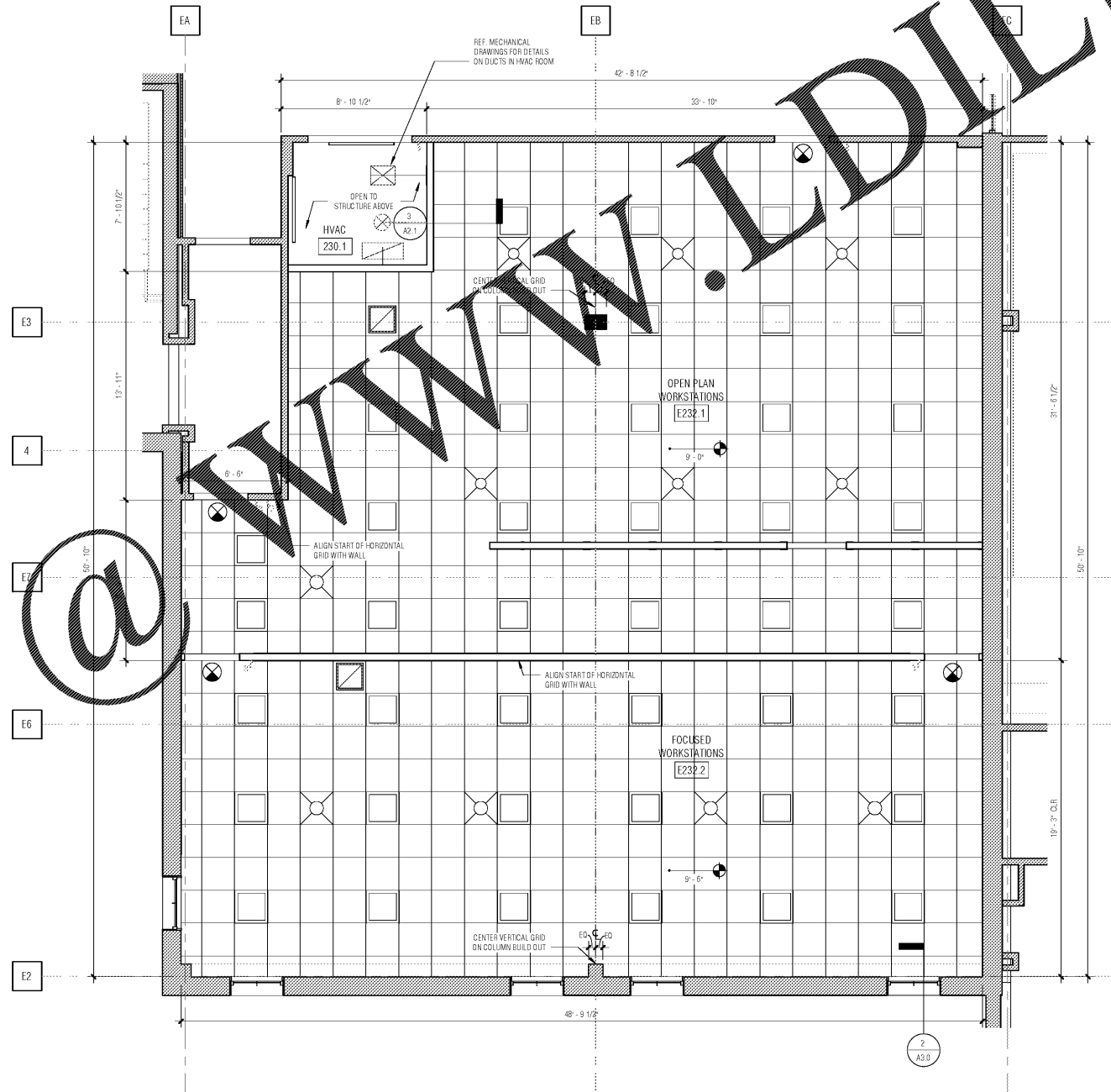
- 2x2 LAY-IN LIGHTS
- SURFACE MOUNTED LIGHTS
- ILLUMINATED EXIT SIGN
- DIFFUSERS
- RETURN REGISTER
- VARIOUS NEW DUCTS - REF. MECHANICAL DRAWINGS
- 2x2 ACOUSTICAL TILE CEILING

REFLECTED CEILING PLAN NOTES

1. INSTALL SMOKE DETECTORS PER CONSULTANT'S DRAWINGS.
2. SEE MEP DRAWINGS FOR HVAC DUCT LOCATIONS AND SPECIFICATIONS.
3. ALL FIXTURES TO BE PROVIDED BY CONTRACTOR.
4. ALL RECESSED LIGHT FIXTURES SHALL BE INDEPENDENTLY SUPPORTED WITH HANGAR WIRE.
5. REFER TO ELECTRICAL/MECHANICAL DRAWINGS FOR FIXTURE MANUFACTURER AND MODEL NUMBERS.
6. PROVIDE FIRE ALARM/SMOKE DETECTOR SYSTEM PER IBC IFC AND NFPA LIFE SAFETY CODE - SEE SHEET A2.0.
7. G.C. TO OBTAIN FIRE ALARM COMPANY TO DESIGN & INSTALL SYSTEM, COORDINATE W/ ELECTRICAL SUBCONTRACTOR AS NEEDED.
8. GENERAL CONTRACTOR TO COORDINATE SPRINKLER SYSTEM HEAD LOCATIONS UNDER SEPARATE PERMIT, IF REQUIRED, CENTER IN CEILING TILE, TYPICAL.
9. GENERAL CONTRACTOR SHALL BE RESPONSIBLE FOR VERIFYING COMPATIBILITY OF LIGHTING FIXTURES WITH THE SPECIFIED CEILING SYSTEM.
10. GENERAL CONTRACTOR TO PROVIDE INITIAL LAMPING OF ALL FIXTURES AND INSTALL APPROPRIATE LAMPS AS REQUIRED BY SPECIFIED LIGHT FIXTURE.
11. GENERAL CONTRACTOR SHALL PROVIDE AND INSTALL SHALLOW DEPTH FIXTURES AS FIELD CONDITIONS NECESSITATE WITH NANO, L.L.C. APPROVAL.
12. GENERAL CONTRACTOR TO THOROUGHLY CLEAN ALL CEILING/STRUCTURE AS NEEDED.
13. NO CEILING BREAKS WILL BE PERMITTED WITHIN A ROOM UNLESS OTHERWISE NOTED.
14. SEE ELECTRICAL ENGINEER DRAWINGS FOR EMERGENCY LIGHT DRAWINGS.
15. ACT LOCATIONS SPECIFIED BY PLAN NOTES/FINISH SCHEDULE.
16. SEE A2.0 PLANS FOR ALL DIMENSIONS FOR WALLS, COLUMNS, ETC.



2 | A3.0 | DETAIL @ EXISTING WINDOW HEAD
3/31 | 3/4\"/>



1 | A3.0 | REFLECTED CEILING PLAN
1/4\"/>

NANO

ARCHITECTURE
RESEARCH AND ANALYSIS FURNITURE

REV	DATE	DESCRIPTION	BY

SEWERAGE AND WATER BOARD
OF NEW ORLEANS

CONTRACT 8155

ELECTRICAL STORAGE ROOM OFFICE RENOVATION

REFLECTED CEILING PLAN

A3.0

DR	SJ	DWG. No. 12148-W-60	
INC	KK		
SK	TD		
SCALE	As indicated		
DATE	15 NOVEMBER 2017	SHEET	BID DOCUMENTS

Order Plans @

www.DIline.com

11/15/2017 4:40:00 PM