

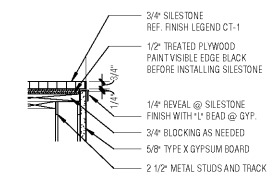
A B C D E F G H K L M

GRAPHIC LEGEND

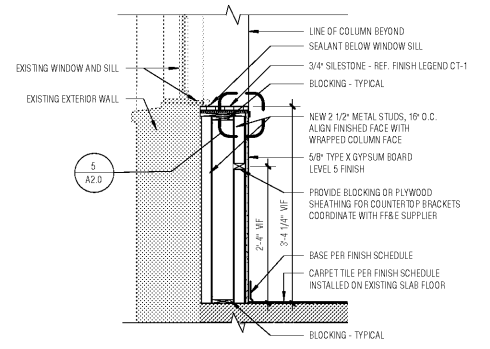
- EXISTING WALLS, PARTITIONS, COLUMNS, FIXTURES, EQUIPMENT, ETC. TO REMAIN
- NEW WALLS, PARTITIONS, COLUMNS, FIXTURES, EQUIPMENT, ETC.
- EXISTING WALLS, PARTITIONS, COLUMNS, FIXTURES, EQUIPMENT, ETC. TO BE REMOVED
- EXISTING 1 HOUR FIRE RATED PARTITION

FLOOR PLAN GENERAL NOTES

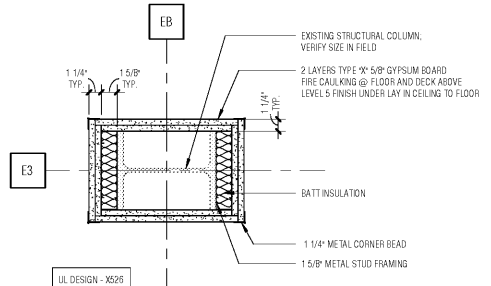
- UNLESS OTHERWISE INDICATED, INTERIOR FINISH DIMENSIONS ARE FACE TO FACE OF FINISH.
- UNLESS OTHERWISE INDICATED, CEILING PLAN(S) OR REFLECTED CEILING PLAN(S) SHALL CEILING HEIGHTS ARE 9'-0".
- FOR ROOM FINISH SCHEDULE, INTERIOR PARTITIONS, REFER TO SHEET A2.0.
- ALL DIMENSIONS SHOWN ON EXISTING CONDITIONS ARE PLUS OR MINUS AND SHOULD BE VERIFIED, IF NECESSARY, ON THE PROJECT SITE.
- ALL WORK, SHELVE, FIXTURES, FURNITURE ETC.
- SEE WORK FOR GENERAL NOTES.
- SEE A2.0 FOR ALL PARTITION TYPES AND DOOR SYMBOLS.
- ALL NEW DOORS ARE 4'-0" OFF PERPENDICULAR WALL UNLESS OTHERWISE NOTED.
- FOR ALL FURNITURE, FIXTURES AND EQUIPMENT REF. ID SHEETS.
- SEE REFLECTED CEILING PLAN FOR CEILING HEIGHTS. NOTIFY ARCHITECT OF ANY CONFLICTS WITH HEIGHTS INDICATED PRIOR TO WORK PROCEEDING.
- CONTRACTOR TO TOUCH UP PAINT IN CORRIDORS/SURROUNDING AREAS AS NEEDED FROM NEW WORK.
- SEE I22.0 FOR FLOOR PATTERN AND TRANSITION DETAILS.



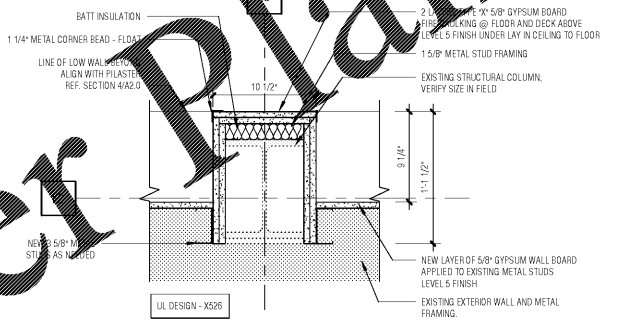
5 | A2.0 | DETAIL @ LOW WALL SILL
1 1/2" = 1'-0"



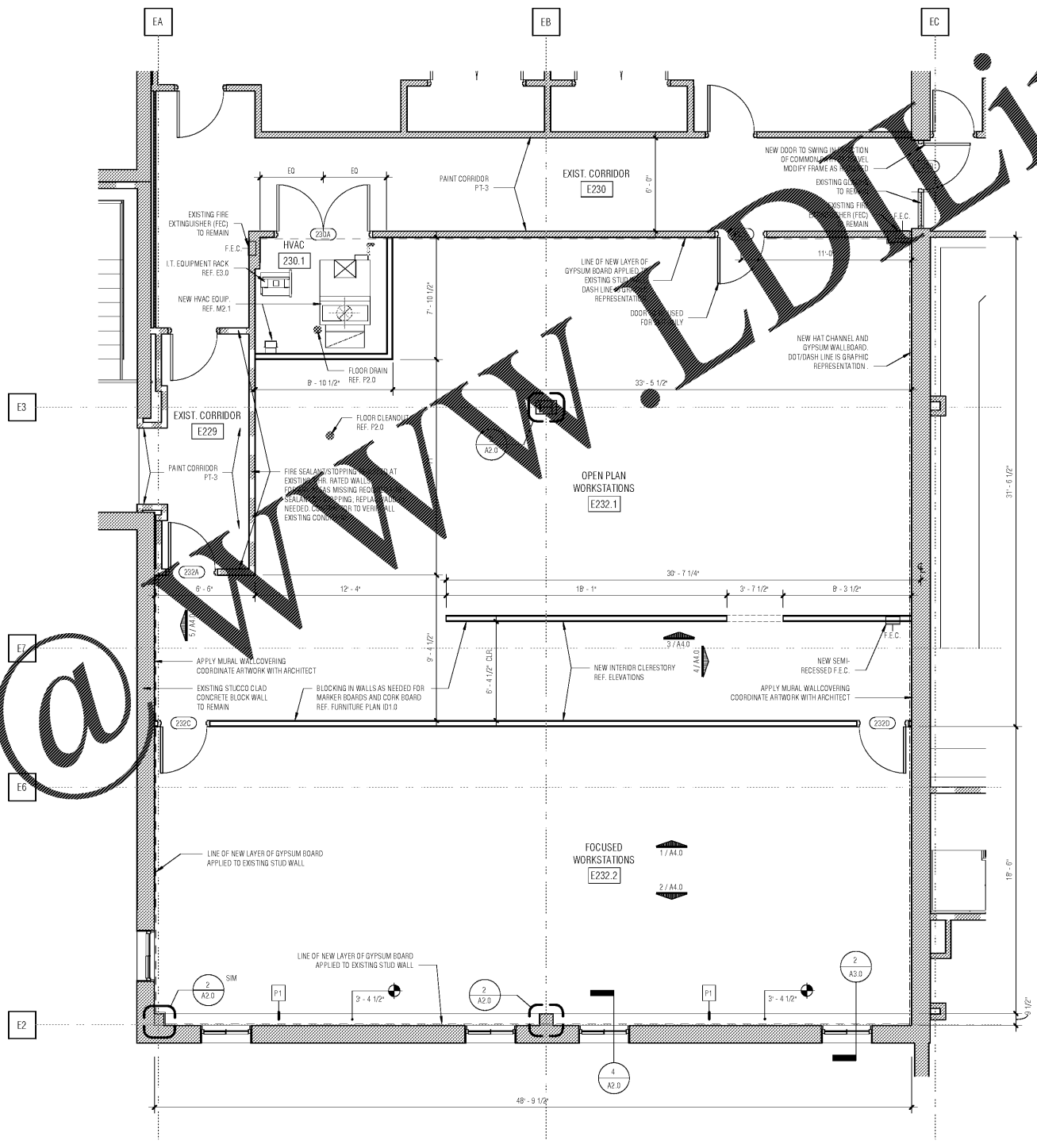
4 | A2.0 | SECTION - TYPICAL KNEE WALL
3/4" = 1'-0"



3 | A2.0 | PLAN DETAIL - 2-HR RATED COLUMN WRAP
1 1/2" = 1'-0"



2 | A2.0 | PLAN DETAIL - 2-HR RATED COLUMN WRAP @ EXTERIOR WALL
1 1/2" = 1'-0"



1 | A2.0 | FLOOR PLAN
1/4" = 1'-0"

NANO ARCHITECTURE
RESIDUAL ARCHITECTS FURNITURE

REV	DATE	DESCRIPTION	BY

SEWERAGE AND WATER BOARD OF NEW ORLEANS

CONTRACT 8155
ELECTRICAL STORAGE ROOM OFFICE RENOVATION

FLOOR PLAN **A2.0**

DR: SJ
INC:
SK: KK
AP: TD
SCALE: As indicated
DATE: 15 NOVEMBER 2017
DWG. No. 12148-W-60
SETTING: BID DOCUMENTS

Order Plans

11/15/2017 4:40:00 PM

A B C D E F G H K L M