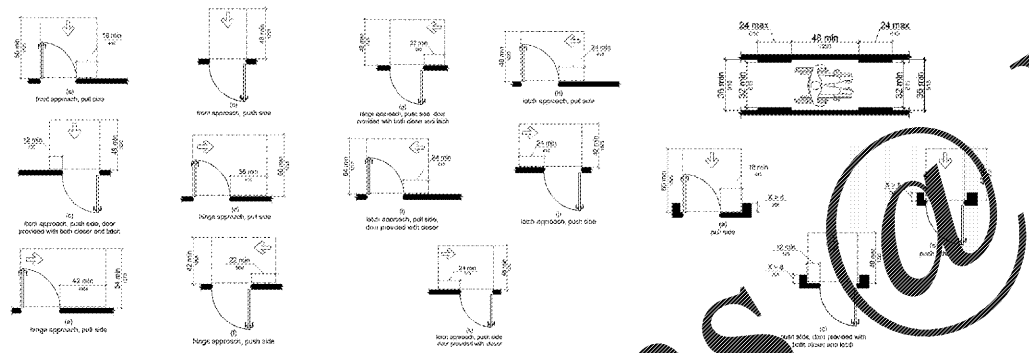


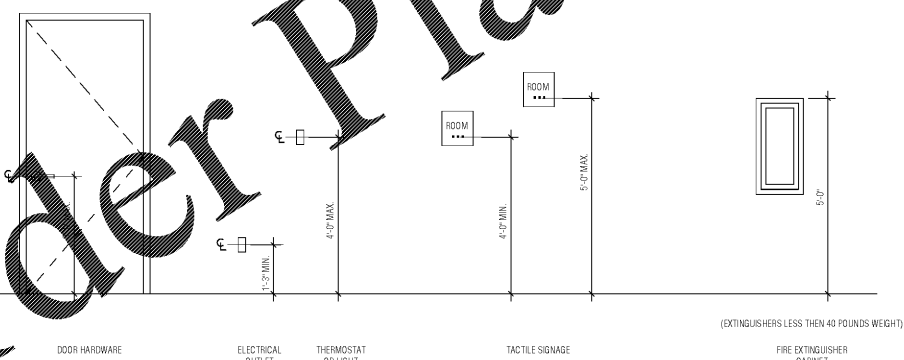
CODE COMPLIANCE

BUILDING DATA	LIFE SAFETY NFPA 101: 2015 EDITION	IBC 2012 EDITION
TOTAL AREA NUMBER OF STORES	23,300 SF / STORY TWO	23,300 SF / STORY TWO
CONSTRUCTION TYPE CONSTRUCTION TYPE LIMITATIONS ALLOWABLE HEIGHT ALLOWABLE AREA (PER FLOOR) MAXIMUM NO. OF STORES	TYPE II (000) [NFPA 101, TABLE A.8.2.1.2] [NFPA 101, 38.1.6] NOT APPLICABLE NOT APPLICABLE NOT APPLICABLE	TYPE II (6) [IBC TABLE 601] 55' 23,000 SF 3
CLASSIFICATION OF OCCUPANCY: SINGLE OCC. [NFPA 101.6.1.1.4]	BUSINESS - B ASSEMBLY - A (ACCESSORY) [NFPA 101.6.1.1.1]	BUSINESS - GROUP B ASSEMBLY - GROUP A-3 (ACCESSORY) [IBC 304.1] [IBC 303.1.2/303.4 (50B.2)]
HAZARD OF CONTENT	ORDINARY [NFPA 101.6.2.2.3(8.1.5)]	ORDINARY [IBC 303.4(504.1)]
OCCUPANT LOAD	A (LESS CONCENTRATED) - 15 NET SF/PERSON 2ND FLR @ 980 SF = 65 PERSONS B - 100 GROSS SF/PERSON 1ST FLR @ 22,300 SF = 223 PERSONS 2ND FLR @ 22,220 SF = 222 PERSONS* TOTAL = 521 PERSONS	A-3 (UNCONCENTRATED) - 15 NET SF/PERSON 2ND FLR @ 980 SF = 65 PERSONS B - 100 GROSS SF/PERSON 1ST FLR @ 22,300 SF = 223 PERSONS 2ND FLR @ 22,220 SF = 222 PERSONS* TOTAL = 521 PERSONS
EGRESS CAPACITY	0.2 INCHES/PERSON @ 288 PERSONS = 56" MIN. 0.3 INCHES/PERSON @ 288 PERSONS = 87" MIN. 44" MINIMUM	0.2 INCHES/PERSON @ 288 PERSONS = 56" MIN. 0.3 INCHES/PERSON @ 288 PERSONS = 87" MIN. 44" MINIMUM
LEVEL COMPONENTS	[NFPA 101, TABLE 7.3.3.1]	[IBC 1005]
STAIRS	[NFPA 101, TABLE 7.3.3.1]	[IBC 1005]
WIDTH OF CORRIDORS	[NFPA 101, 7.3.4(8.2.3)/TABLE 7.3.3.1]	[IBC 101B.2 EXCEPTION 2]
ENCROACHMENT		NOT LESS THAN 7" OF RED. WIDTH [IBC 1005.7.1]
NUMBER OF MEANS OF EGRESS	2 EXITS [NFPA 101, TABLE 7.3.1.2]	2 EXITS [IBC TABLE 1015.1]
DOOR SWING IN DIRECTION OF EGRESS		NOT REQUIRED** [IBC 1008.1.2 EXCEPTION]
**ALL AREAS IN SCOPE OF WORK HAVE OCCUPANT LOADS LESS THAN 50		
CORRIDOR FIRE RESISTANCE RATING	ACCESS TO EXITS PROVIDED BY CORRIDORS 0 HOURS (WITH SPRINKLER) [NFPA 101, 38.3.6.1 EXCEPTION 2 & 3]	OCC. LOAD SERVED BY CORRIDOR GREATER THAN 30 OCCUPANTS - 0 HOURS (WITH SPRINKLER) [IBC TABLE 101B.1]
TRAVEL DISTANCE TO EXIT: COMMON PATH OF TRAVEL (BY OCC.) BUSINESS	100 FT [NFPA 101, TABLE A7.6(8) 2.2.3.2]	100 FT (6,5) [IBC 1014.3]
DEAD-END CORRIDORS (BY OCC.) BUSINESS	50 FT [NFPA 101, TABLE A7.6(8) 2.5.3.2]	50 FT (6,5) [IBC 101B.4 EXCEPTION 2]
TRAVEL DISTANCE (BY OCC.) BUSINESS	300 FT [NFPA 101, TABLE A7.6(8) 2.5.3.2]	300 FT (6) [IBC TABLE 1016.2]
PROTECTION EXIT ENCLOSURES CORRIDORS	NOT REQUIRED (WITH SPRINKLER) [NFPA 101, 38.3.6]	NOT REQUIRED (WITH SPRINKLER) [IBC TABLE 101B.1]
AUTOMATIC SPRINKLER SYSTEM	NOT REQUIRED (BUT PROVIDED) [NFPA 101, 38.3.5]	NOT REQUIRED (BUT PROVIDED) [IBC 903.2]
FIRE EXTINGUISHERS	REQUIRED [NFPA 101, 38.3.5]	REQUIRED [IBC 905]
FIRE ALARM SYSTEM	REQUIRED [NFPA 101, 38.3.4.1(4) 7.2.1]	REQUIRED [IBC 907.2.2 EXCEPTION]

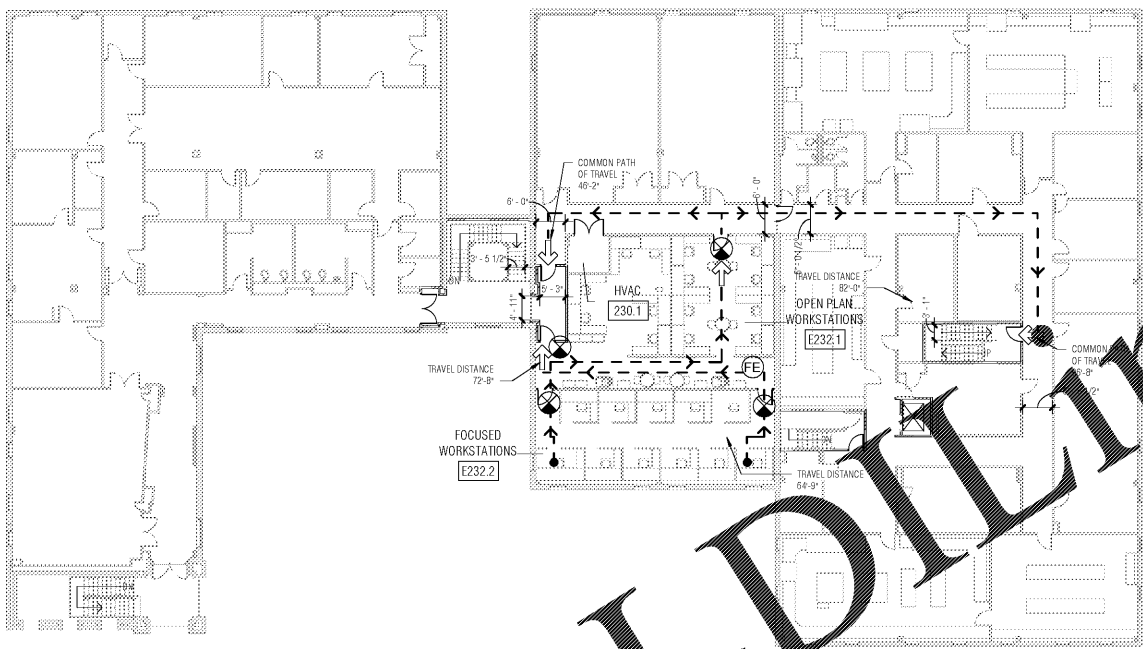
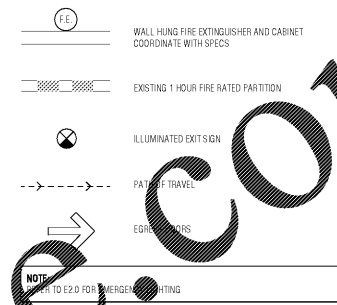
ACCESSIBLE CLEARANCES (NOT TO SCALE)



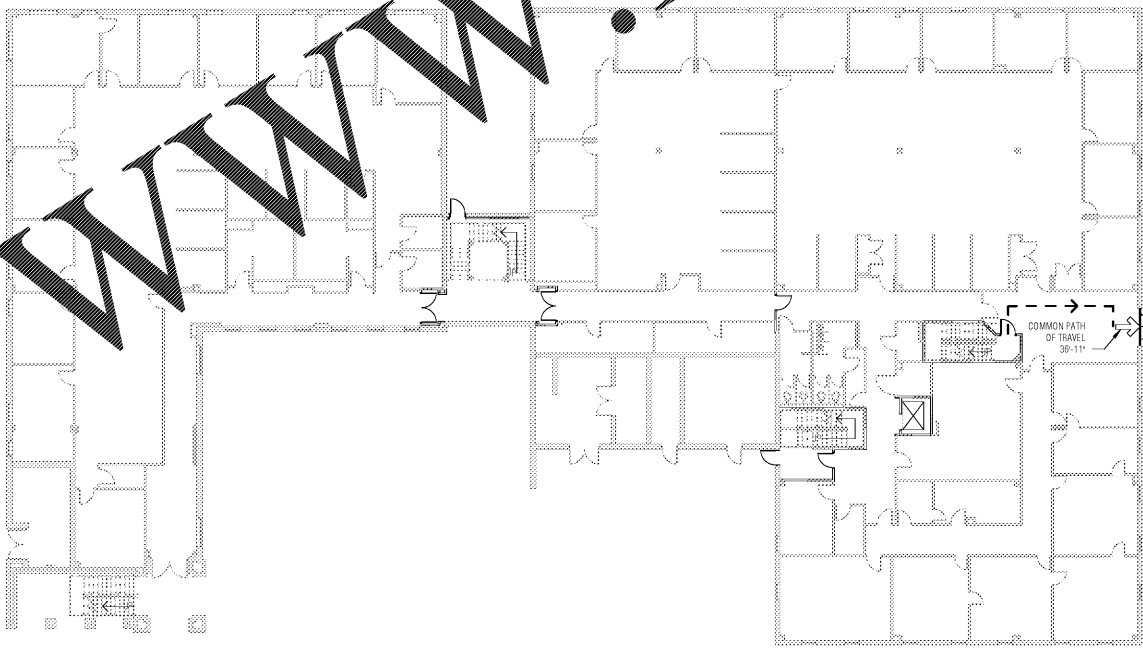
STANDARD MOUNTING HEIGHTS (NOT TO SCALE)



LIFE SAFETY LEGEND



2 AC10 LIFE SAFETY PLAN - SECOND FLOOR  
1/16" = 1'-0"



1 AC10 LIFE SAFETY PLAN - FIRST FLOOR  
1/16" = 1'-0"

**NANO ARCHITECTURE**  
RESARCH ARCHITECTS FURNITURE

REV	DATE	DESCRIPTION	BY

**SEWERAGE AND WATER BOARD OF NEW ORLEANS**

**CONTRACT 8155**  
ELECTRICAL STORAGE ROOM OFFICE RENOVATION

CODE COMPLIANCE PLAN **AC1.0**

DR: SJ  
INC: [blank]  
SK: KK  
AP: TD  
SCALE: As indicated  
DATE: 15 NOVEMBER 2017  
DWG. No. 12148-W-60  
SETTING: BID DOCUMENTS

Order Plans @

11/15/2017 4:00 PM

WWW.LDDLINE.COM