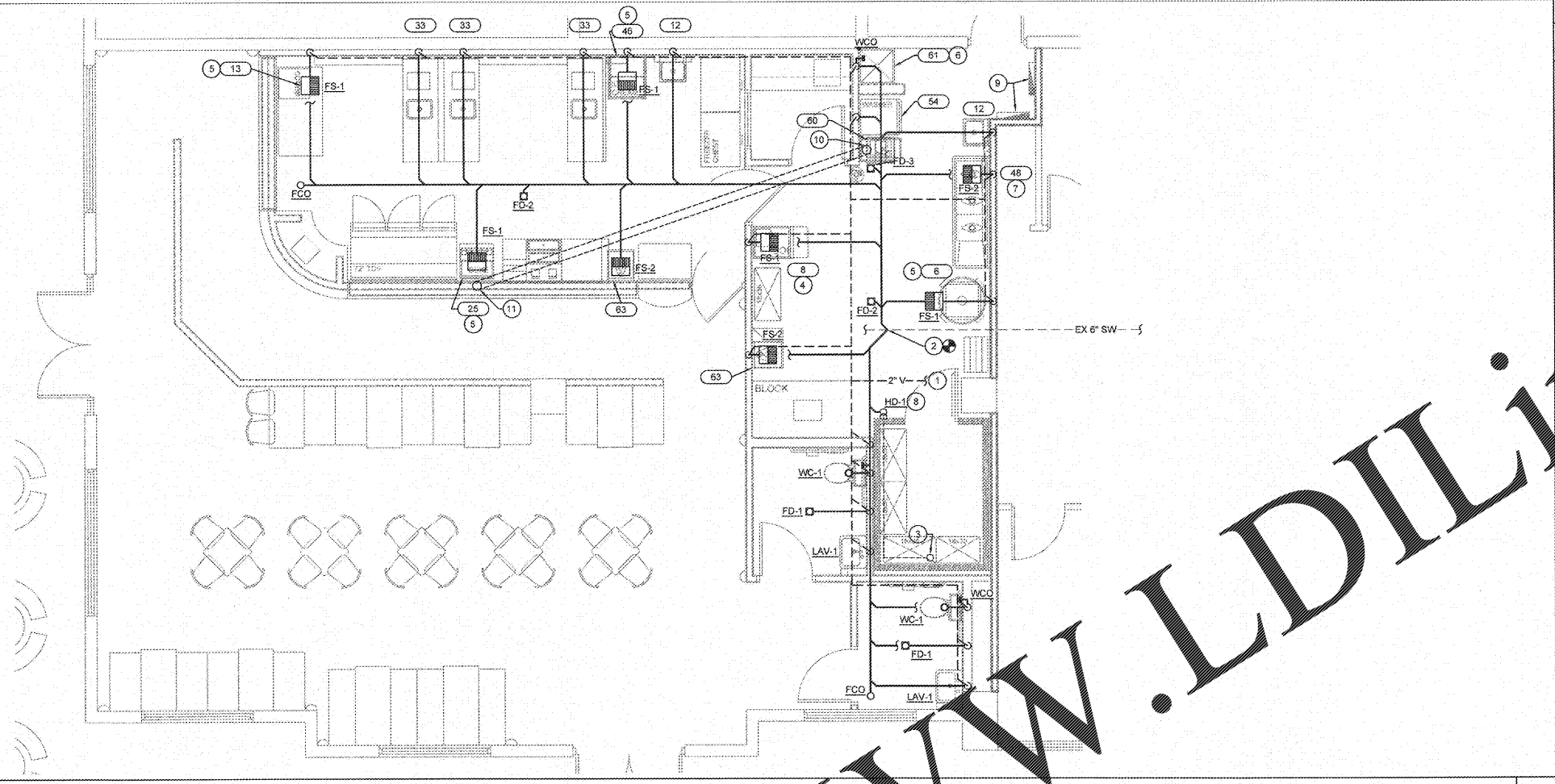
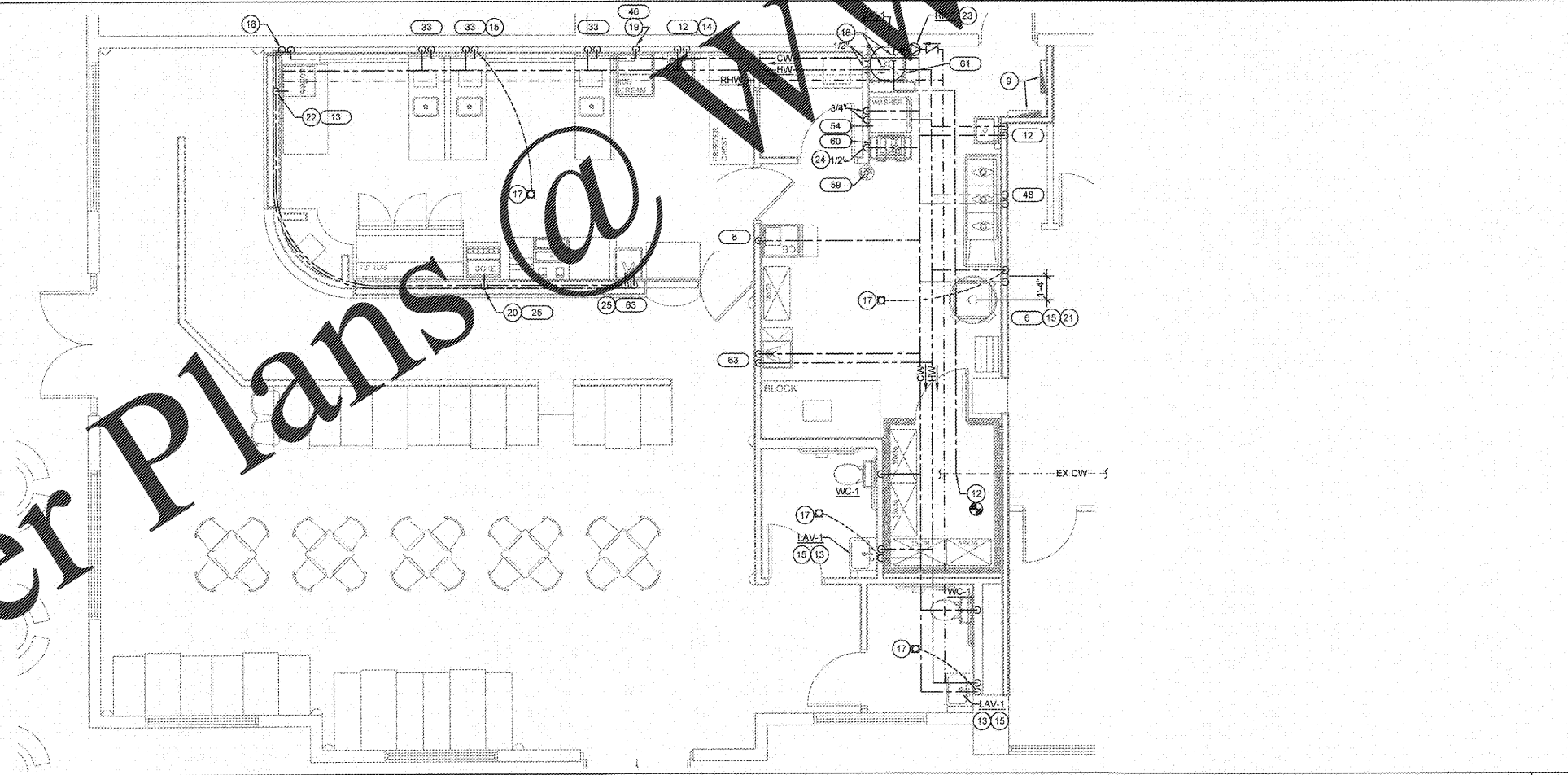


Order Plans @

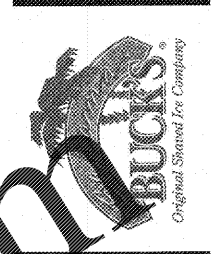


DWV FLOOR PLAN 1
1/4"=1'-0"

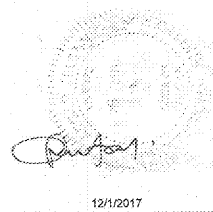


WATER AND GAS FLOOR PLAN 2
1/4"=1'-0"

- KEY NOTES**
- CONNECT NEW VENT LINE TO EXISTING MAIN OF ADEQUATE SIZE. FIELD VERIFY LOCATION, SIZE, AND CONDITION OF CONNECTIONS PRIOR TO BID.
 - CONNECT NEW SANITARY LINE TO EXISTING MAIN OF ADEQUATE SIZE. VERIFY SIZE, LOCATION, INVERT ELEVATIONS OF CONNECTIONS, AND DIRECTION OF FLOW AT THE EXISTING MAIN PRIOR TO ANY WORK.
 - ROUTE WALK-IN COOLER CONDENSATE DRAIN LINE AS HIGH AS POSSIBLE AND ALONG WALLS AS SHOWN. INSULATE ALL CONDENSATE PIPING AND FITCH A MINIMUM OF 1/4" PER FOOT IN THE DIRECTION OF FLOW. SEAL ALL COOLER WALL PENETRATIONS WATER TIGHT AND COVER EACH WITH AN ESCUTCHEON PLATE. PROVIDE FULL SIZE TRAP AND EXTEND ABOVE FLOOR AND BEHIND EQUIPMENT FOR AN INDIRECT CONNECTION TO AN APPROVED RECEPTOR.
 - PROVIDE INDIRECT DRAIN FROM ICE BIN TO ADJACENT FLOOR SINK WITH AIR GAP AS REQUIRED.
 - DISCHARGE DRAIN FROM EQUIPMENT TO FLOOR SINK WITH AIR GAP AS REQUIRED.
 - ROUTE DRAIN FROM WATER HEATER TO TERMINATION POINT. FLOOR SINK LEAVE AIR GAP AS REQUIRED.
 - MANIFOLD DRAINS FROM THE 3 COMPARTMENT SINK BASINS. PROVIDE BALL VALVE ON COMBINED DRAIN LINE AS HIGH AS POSSIBLE AND DISCHARGE TO ADJACENT FLOOR SINK WITH AIR GAP AS REQUIRED.
 - EXTEND FLOOR DRAIN CONDENSATE DRAIN DOWN INTO HUB DRAIN WITH AN AIR GAP.
 - PROVIDE ELECTRICAL PANEL LOCATION. NO PIPING SHALL BE INSTALLED ABOVE OR BELOW THE CEILING AT THIS LOCATION.
 - EXTEND 1/2" PVC SLEEVE THRU SAWCUT FROM BAG & BOX AND ROUTE TO SODA DISPENSER. TRENCH, SAW CUT OR CORE HILL FLOOR THEN PATCH AND REPAIR FLOOR AS REQUIRED.
 - PROVIDE 6" PVC SLEEVE FOR ROUTING SODA LINES FROM THE BAG & BOX TO THE BEVERAGE STATION. SLEEVE ROUTED BETWEEN BACK OF COKE MACHINE AND WALL.
 - CONNECT NEW 1 1/4" DOMESTIC WATER LINE TO EXISTING MAIN OF ADEQUATE SIZE IF NOT EXISTING. INSTALL COMPLETE WITH SHUT OFF VALVE PLACED IN WALL BOX IN STORAGE ROOM. BACKFLOW PREVENTION DEVICE AND SUB METER AS DIRECTED. FIELD VERIFY LOCATION AND SIZE OF CONNECTIONS PRIOR TO BID.
 - ROUTE 1/2" HW & CW TO RESTROOM LAVATORY FAUCET. INSTALL SUPPLIES COMPLETE WITH MIXING VALVE (MXV-1). MAX DISCHARGE TEMPERATURE 110°F.
 - ROUTE 1/2" HW & CW TO HAND WASHING FIXTURE. INSTALL SUPPLIES COMPLETE WITH MIXING VALVE (MXV-1). MAX DISCHARGE TEMPERATURE 110°F.
 - COORDINATE INSTALLATION OF ACCESSIBLE TRAP PRIMER VALVE (TP-1) BELOW FIXTURE. VALVE SHALL BE RECESSED IN THE WALL AND COVERED WITH ACCESS PANEL.
 - 1" CW & HW SUPPLY TO TANK TYPE WATER HEATER.
 - 1/2" CW BELOW FLOOR, FROM TRAP PRIMER TO RECEPTOR.
 - ROUTE 1/2" CW AND 1/2" HW DOWN WALL AND EXTEND INTO LOW WALL AS SHOWN.
 - ROUTE 1/2" CW DOWN TO DIPPER WELL WITH SHUT OFF AND BACKFLOW DEVICE (DCV-1) CONFORMING TO ASSE 1022.
 - EXTEND 1/2" CW TO BEVERAGE DISPENSER WITH SHUT OFF AND BACKFLOW DEVICE (DCV-1) CONFORMING TO ASSE 1022.
 - 1/2" CW AND 1/2" HW DOWN TO MIXING VALVE (MXV-1). ROUTE 1/2" TEMPERED WATER FROM MIXING VALVE TO 1/2" THREADED BALL VALVE WITH HOSE BIB CONNECTION AT 72" AFF.
 - EXTEND 1/2" CW TO ESPRESSO MACHINE WITH SHUT OFF AND BACKFLOW DEVICE (DCV-1) CONFORMING TO ASSE 1022.
 - PROVIDE INLINE HOT WATER RECIRCULATION PUMP AND CHECK VALVE.
 - ROUTE 1/2" DEDICATED COPPER COLD WATER LINE DOWN TO BIB RACK WITH SHUT OFF, 3/8" MALE FLARE FITTING PER CARBONATOR, AND BACKFLOW PREVENTION DEVICE AS SPECIFIED BY MUNICIPAL CODE. INSTALL AT 18" AFF.
 - EXTEND 1/2" CW AND 1/2" HW TO 1-COMP SINK.



THE DIMENSION GROUP
ARCHITECTURE * CIVIL ENGINEERING * MEP ENGINEERING * PLUMBING
19725 S. MIDLAND, FRIEDLAND, TEXAS 75841 (936) 234-2400



ABACOA TOWN CENTER
1209 MAIN STREET
UNIT 116
JUPITER, FLORIDA

REVISIONS:

DRAWN BY: TG CHECKED BY: AH
PROJECT NUMBER: 17-598
DATE: 10-24-2017

PLUMBING
FLOOR
PLANS
P1.1