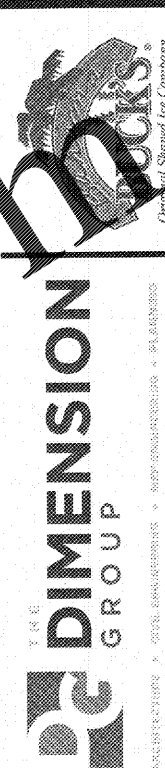


SCHEDULE LEGEND

TAG	ITEM	MANUFACTURER/SUPPLIER	MATERIAL SPECIFICATION	APPLICATION	LOCATION	REMARKS
FLOOR						
F-1	PORCELAIN TILE	DALTILE	AV076361PF 6" X 36" AV07 ALDER STD. GROUT: CUSTOM BUILDING PRODUCTS- #52 TOBACCO BROWN. GROUT LINE 1/8"	PER MANUFACTURER'S SPECIFICATIONS	DINING	RE: FLOOR FINISH PLAN
F-2	EPOXY	HP SPARTACOTE	SPARTA-CHIP COPPER MOUNTAIN 1/8" EPOXY FLOORING WITH SPARTA- GRIP TRACTION ADDITIVE	PER MANUFACTURER'S SPECIFICATIONS	SALES, BACK OF HOUSE AND OFFICE	RE: FLOOR FINISH PLAN
BASE						
B-1	PORCELAIN TILE	DALTILE	AV076361PF 6" X 36" AV07 ALDER STD. GROUT: CUSTOM BUILDING PRODUCTS- #52 TOBACCO BROWN. GROUT LINE 1/8"	PER MANUFACTURER'S SPECIFICATIONS	DINING	RE: INTERIOR ELEVATIONS
B-2	EPOXY	HP SPARTACOTE	SPARTA-CHIP COPPER MOUNTAIN 1/8" EPOXY FLOORING WITH SPARTA- GRIP TRACTION ADDITIVE	PER MANUFACTURER'S SPECIFICATIONS	SALES, BACK OF HOUSE AND OFFICE	RE: INTERIOR ELEVATIONS
WALLS						
WC-1	WAINSCOT	ACROVYN / GRAND ENTRANCE 888.424.6287 GEORDERS@C-SGROUP.COM	ACROVYN 4000 COLOR: BAHAMA TEAL #652. TEXTURE: DADO. INSTALL WITH MARLITE WATER BASE CEMENT. USE CORRESPONDING CORNER AND TRIM PIECES AS REQUIRED	PER MANUFACTURER'S SPECIFICATIONS	DINING WAINSCOT, SALES COUNTER, SOFFIT ABOVE SALES COUNTER	RE: INTERIOR ELEVATIONS
WC-2	PORCELAIN TILE	FLORIM USA	CHARLESTON MULTICOLOR PORCELAIN TILE 3" x 36" WITH STAINLESS STEEL OR ALUMINUM SHLUTER COVE BASE	PER MANUFACTURER'S SPECIFICATIONS	RESTROOM	RE: INTERIOR ELEVATIONS
WC-4	FRP	MARLITE	BRIGHT WHITE	PER MANUFACTURER'S SPECIFICATIONS	BACK OF HOUSE AREA	RE: INTERIOR ELEVATIONS
WC-5	SIDING	BY GC	6" PINE BOXCAR SIDING; PRIMED AND PAINTED SW7005 PURE WHITE	PER MANUFACTURER'S SPECIFICATIONS	LOW WALL	RE: INTERIOR ELEVATIONS
PAINT						
PT-1	CORAL	SHERWIN WILLIAMS	SW1605 "WAX BEGONIA" SEMI GLOSS	PER MANUFACTURER'S SPECIFICATIONS	RESTROOM, SALES AND DINING AREA	RE: RCP, INTERIOR ELEVATIONS
PT-2	WHITE	SHERWIN WILLIAMS	SW7005 "PURE WHITE" GLOSS	PER MANUFACTURER'S SPECIFICATIONS	OFFICE AND RESTROOM	RE: INTERIOR ELEVATIONS
PT-3	TEAL	SHERWIN WILLIAMS	SW1748 "SURPER SAIL"	PER MANUFACTURER'S SPECIFICATIONS	NOT USED	
PT-4	BLACK	SHERWIN WILLIAMS	FLAT BLACK	PER MANUFACTURER'S SPECIFICATIONS	CEILING EXPOSED STRUCTURAL AND EXPOSED DUCTWORK	RE: RCP, INTERIOR ELEVATIONS
CEILING						
CT-1	2 1/2" LAY-IN CEILING PANELS	AMERICAN GYPSUM	FIREBLOC CP BY AMERICAN GYPSUM & CHICAGO METALLIC 15/16" WHITE ALUMINUM CAPPED, HOOK TYPE, #200 SNAP GRID, 2'X4' WHITE GYPSUM LAY-IN CEILING PANEL W/ TEXTURED VINYL	PER MANUFACTURER'S SPECIFICATIONS	KITCHEN	RE: RCP
MISC. INTERIOR						
PL-1	PLASTIC LAMINATE	NEVAMAR	NEVAMAR "KENDO" W22004T	PER MANUFACTURER'S SPECIFICATIONS	SALES AND OFFICE	RE: INTERIOR ELEVATIONS
ST-1	CLEAR COAT	MINWAX	MINWAX CLEAR BRUSHING LACQUER - GLOSS FINISH - 3 COATS	PER MANUFACTURER'S SPECIFICATIONS	DINING AND SALES	RE: INTERIOR ELEVATIONS

GENERAL NOTES

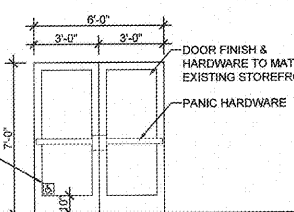
THE G.C. WILL BE RESPONSIBLE FOR NEATLY CAULKING THE FOLLOWING LOCATIONS:
 -ALL EXTERIOR WINDOWS TO INTERIOR WOOD TRIM.
 -ALL WALLCOVERING TO WOOD TRIM TRANSITIONS.
 -ALL CERAMIC TILE INSIDE CORNERS.
 -ALL DOOR JAMBS TO CERAMIC TILE, WOOD TRIM, OR WALLCOVERING
 -ALL KITCHEN CEILING GRID TO F.R.P.
 -ALL CERAMIC TILE BASE TOP GROUT JOINT.
 -ALL BATHROOM ACCESSORIES TO WALL SURFACE.
 -ALL WOOD TRIM TO WAINSCOT
 *WHERE APPLICABLE, CAULK SHALL BE PAINTED TO MATCH ADJACENT TRIM.



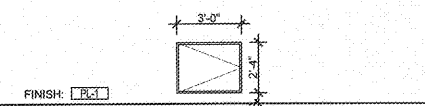
FINISH SCHEDULE
NOT TO SCALE

1

REMARKS:
 1. GC SHALL PROVIDE SIGNAGE THAT READS "THIS DOOR SHALL REMAIN UNLOCKED DURING BUSINESS HOURS".
 2. ALL LOCKS TO BE KEYPED THE SAME

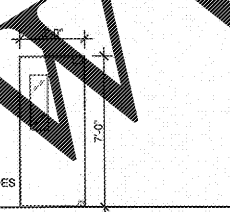


DOOR #100	
NEW STOREFRONT DOOR TO MATCH EXISTING STOREFRONT SPEC AND FINISH	
HARDWARE - DOOR #100	
HARDWARE TO MATCH EXISTING SHELL BUILDING HARDWARE. G.C. SHALL PROVIDE PUSH/PULL, PANIC DEVICE (DETEX SERIES 40 ALUM. FINISH OR EQUAL), CLOSER (LCN OR EQUAL), ALUMINUM THRESHOLD, AND DOOR SWEEP.	
	NEW



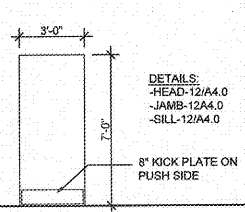
DOOR #101	
NEW SWING GATE	
HARDWARE - DOOR #101	
ALL HARDWARE TO BE STAINLESS STEEL	

REMARKS:
 1. G.C. TO PROVIDE H.M. FRAME. SEE NOTES FOR CASING OPENING FRAME BELOW



DOOR #102	
NEW HOLLOW METAL FRAME, DOOR ELIASON LWP-3 WITH 9"X30" WINDOW	
HARDWARE - DOOR #102	
ALL HARDWARE TO BE STAINLESS STEEL	

REMARKS:
 1. HOLLOW METAL FRAME



DOOR #103	
NEW 1 3/4" SOLID CORE WOOD DOOR W/ HOLLOW METAL FRAME	
HARDWARE-DOOR #103	
(1) 1/2 PR.) HINGES FBB179 (BALL BEARING) - STANLEY -SATIN CHROME	NEW
(1) DOOR LEVER PLYMOUTH STYLE PRIVACY ELAN LEVER F40 - SCHLAGE - SATIN CHROME	NEW
(1) DEADBOLT ONE SIDED KEYPED B80 - SCHLAGE - SATIN CHROME	NEW
(1) KICK PLATE #48 8"X34" - TRIMCO - ALUMINUM	NEW
(1) CLOSER 1461 SNB DELAYED ACTION - LCN - ALUMINUM	NEW
(1) WALL STOP W302 TB - TRIMCO - SATIN CHROME	NEW

NEW ENTRY DOOR ELEVATION AND HARDWARE 1/4"=1'-0"

100

HALF ELIASON DOOR ELEVATION AND HARDWARE 1/4"=1'-0"

101

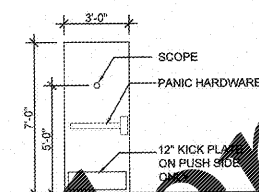
ELIASON DOOR ELEVATION AND HARDWARE 1/4"=1'-0"

102

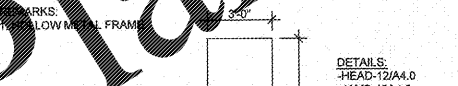
OFFICE DOOR ELEVATION AND HARDWARE 1/4"=1'-0"

103

REMARKS:
 1. NEW REAR DOOR INSTALLED BY TENANT
 2. PAINT EXTERIOR TO MATCH ADJACENT TENANT

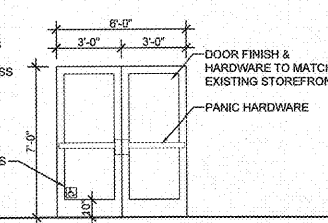


DOOR #104	
NEW METAL DOOR AND HOLLOW METAL FRAME	
HARDWARE - DOOR #104	
(1) DOOR SCOPE - SCHLAGE - SATIN CHROME	NEW
(1) KICK PLATE #48 8"X34" - TRIMCO - SATIN CHROME	NEW
PANIC DEVICE (DETEX SERIES 40 ALUM. FINISH OR EQUAL), CLOSER (LCN OR EQUAL), ALUMINUM THRESHOLD, AND DOOR SWEEP.	NEW
(1) 1/2 PR.) HINGES FBB179 (BALL BEARING) - STANLEY -SATIN CHROME	NEW
(1) WALL STOP W302 TB - TRIMCO - SATIN CHROME	NEW

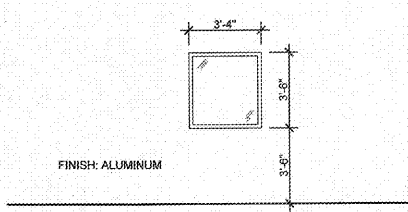


DOOR #105 & 106	
NEW 1 3/4" SOLID CORE WOOD DOOR W/ HOLLOW METAL FRAME	
HARDWARE-DOOR #105 & 106	
(1) 1/2 PR.) HINGES FBB179 (BALL BEARING) - STANLEY -SATIN CHROME	NEW
(1) DOOR LOCK B571 W/ THUMBTURN - SCHLAGE - SATIN CHROME WITH OCCUPIED SIGN	NEW
(1) PUSH PLATE #40 4"X16" - TRIMCO - ALUMINUM	NEW
(1) PULL PLATE 4510A 4"X16" - TRIMCO - ALUMINUM	NEW
(1) KICK PLATE #48 8"X34" - TRIMCO - ALUMINUM	NEW
(1) CLOSER 1461 SNB DELAYED ACTION - LCN - ALUMINUM	NEW
(1) WALL STOP W302 TB - TRIMCO - SATIN CHROME	NEW

REMARKS:
 1. GC SHALL PROVIDE SIGNAGE THAT READS "THIS DOOR SHALL REMAIN UNLOCKED DURING BUSINESS HOURS".
 2. ALL LOCKS TO BE KEYPED THE SAME



DOOR #107	
EXISTING STOREFRONT DOOR	
HARDWARE - DOOR #107	
HARDWARE TO MATCH EXISTING SHELL BUILDING HARDWARE. G.C. SHALL PROVIDE PUSH/PULL, PANIC DEVICE (DETEX SERIES 40 ALUM. FINISH OR EQUAL), CLOSER (LCN OR EQUAL), ALUMINUM THRESHOLD, AND DOOR SWEEP IF REQUIRED	
	EXISTING



WINDOW 'A'	
NEW ONE-WAY WINDOW	

REAR DOOR ELEVATION AND HARDWARE 1/4"=1'-0"

104

RESTROOM DOOR ELEVATION AND HARDWARE 1/4"=1'-0"

105 106

EXISTING ENTRY DOOR ELEVATION AND HARDWARE 1/4"=1'-0"

107

WINDOW ELEVATION 1/4"=1'-0"

A



ABACOA TOWN CENTER
 1209 MAIN STREET
 UNIT 116
 JUPITER, FLORIDA

REVISIONS:	

PROJECT NUMBER: 17-596

DATE: 10-24-2017

FINISH, DOOR, AND WINDOW SCHEDULE

A5.0