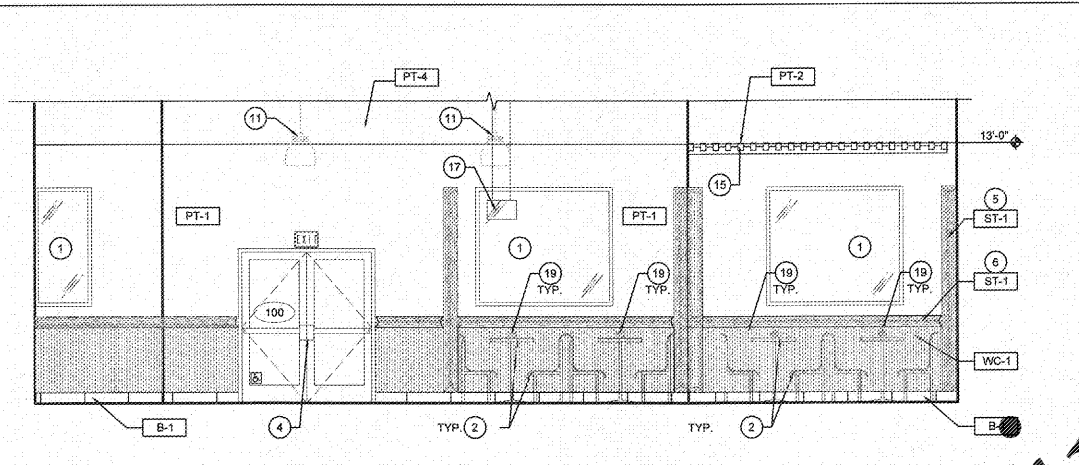
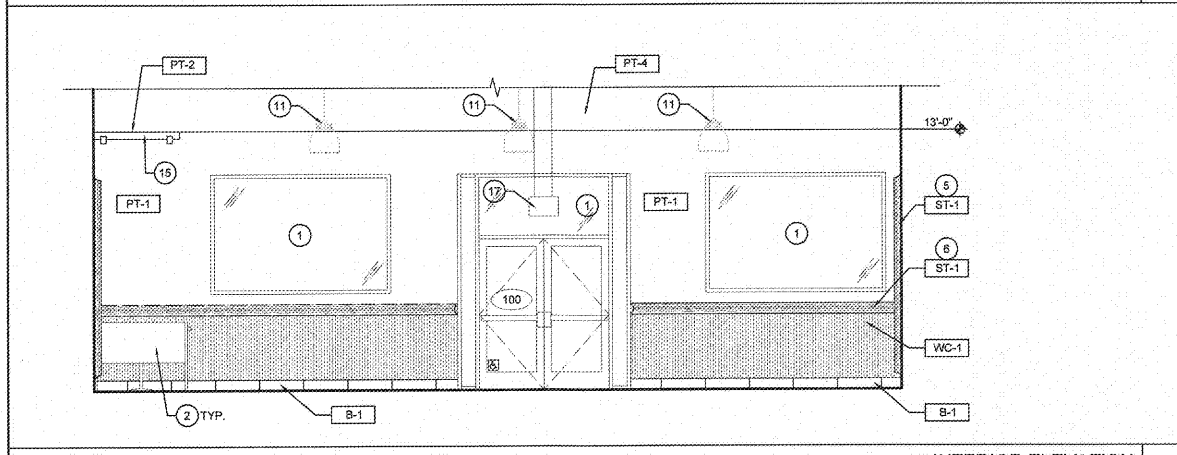


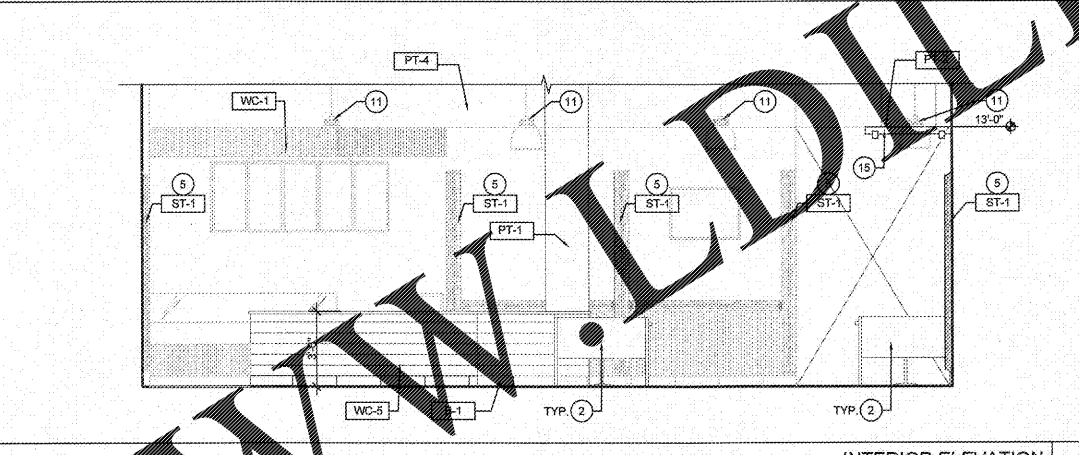
INTERIOR ELEVATION 1
1/4"=1'-0"



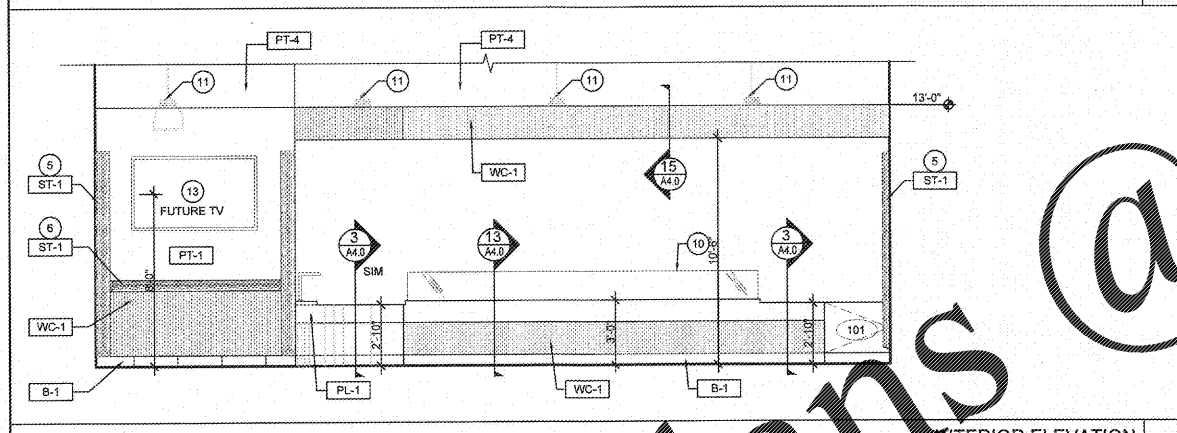
INTERIOR ELEVATION 2
1/4"=1'-0"



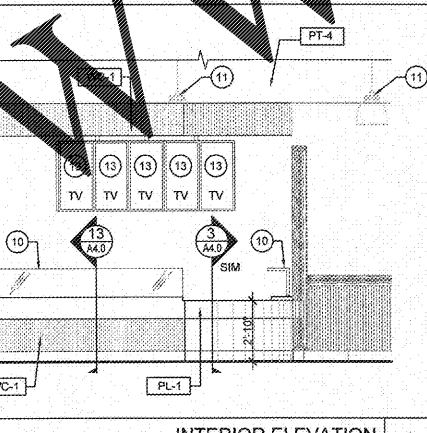
INTERIOR ELEVATION 3
1/4"=1'-0"



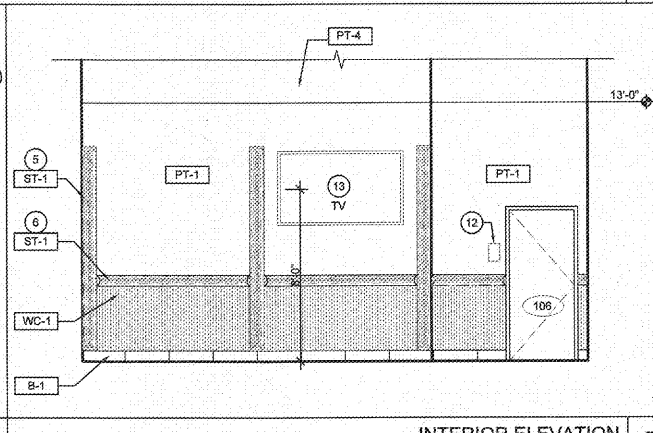
INTERIOR ELEVATION 4
1/4"=1'-0"



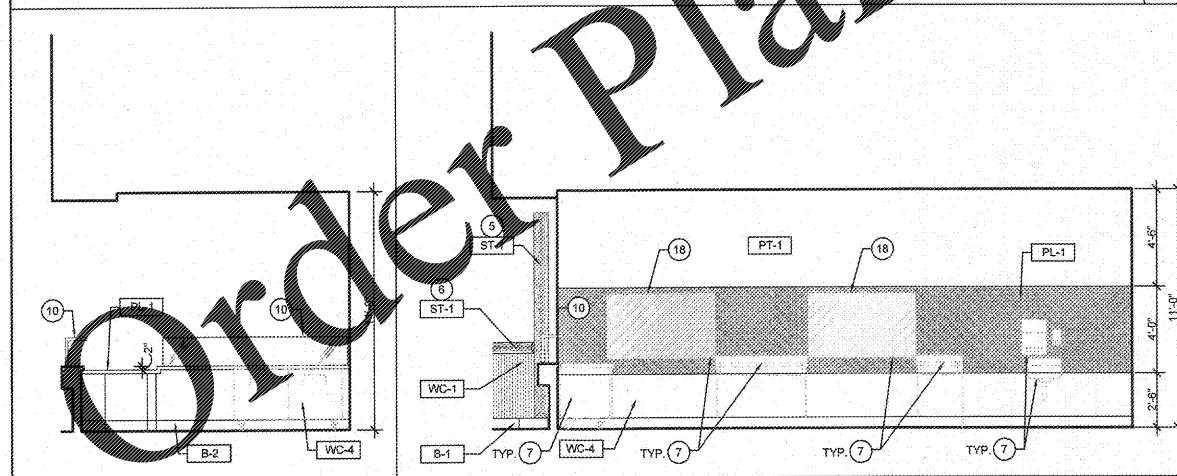
INTERIOR ELEVATION 5
1/4"=1'-0"



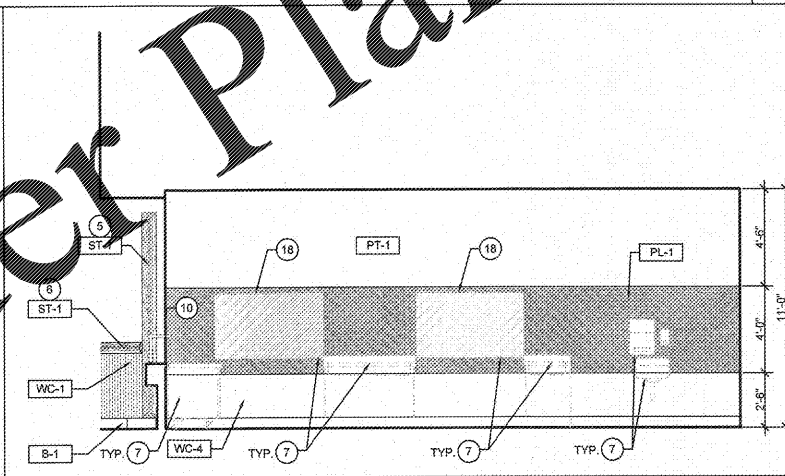
INTERIOR ELEVATION 6
1/4"=1'-0"



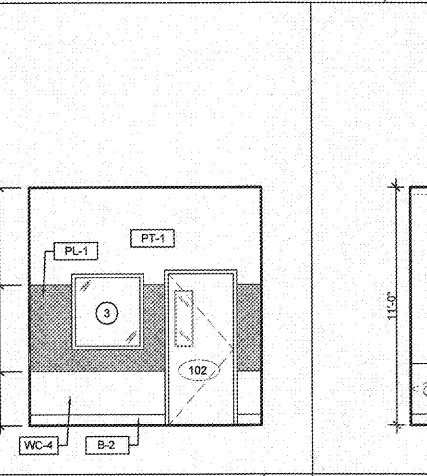
INTERIOR ELEVATION 7
1/4"=1'-0"



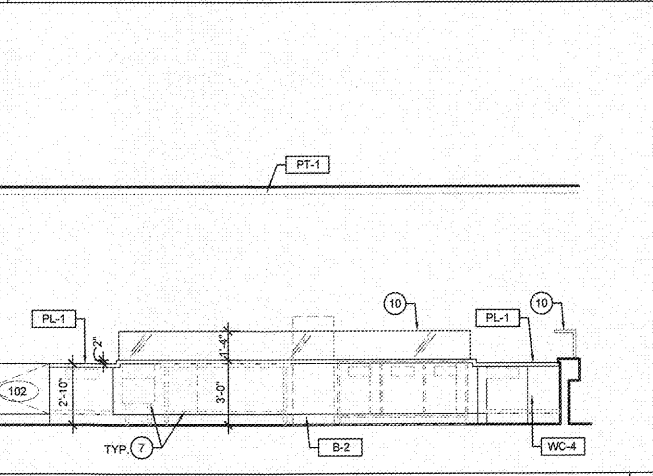
INTERIOR ELEVATION 8
1/4"=1'-0"



INTERIOR ELEVATION 9
1/4"=1'-0"



INTERIOR ELEVATION 10
1/4"=1'-0"

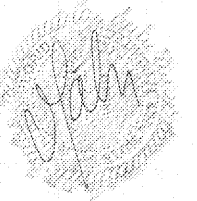
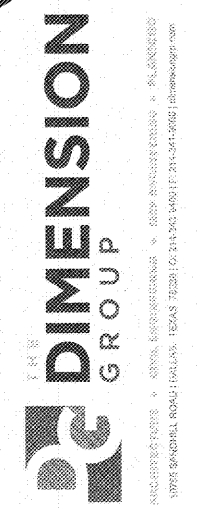
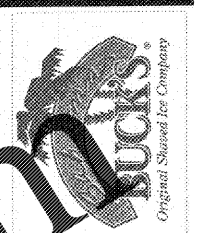


INTERIOR ELEVATION 11
1/4"=1'-0"

- GENERAL NOTES**
- REFER TO MECHANICAL DRAWINGS FOR ALL DUCTWORK, REGISTERS AND DIFFUSERS.
 - ALL CONTRACTORS SHALL COORDINATE WORK WITH OTHER TRADES PRIOR TO ROUGH-IN OF FIXTURES AND UTILITIES.
 - REFER TO ELECTRICAL DRAWINGS FOR ALL LIGHTING FIXTURES.
 - ALL NOTES AND MATERIAL INDICATIONS ARE TYPICAL AND TO SIMILAR CONDITIONS, UNLESS NOTED OTHERWISE.
 - PLACEMENT OF SPEAKERS AND AUDIO EQUIPMENT TO BE BY MUSIC COMPANY
 - CEILING HEIGHTS SHOWN ARE FROM FINISHED CEILING SURFACE TO FINISHED FLOOR
 - REFER TO FINISH SCHEDULE FOR APPLIED FINISHES
 - LOCATE LIGHTING AND HVAC REGISTERS SYMMETRICALLY CENTERED OVER DOORS, WINDOWS AND CEILING TRAYS AS SHOWN
 - G.C. TO COORDINATE LOCATION OF BLOCKING FOR EQUIPMENT AS REQUIRED.
- KEY**
- EXISTING STOREFRONT TO REMAIN
 - PROPERTY OWNER
 - OWNER WINDOW SCHEDULE
 - NEW DOOR AND STOREFRONT; RE: DOOR SCHEDULE
 - 1/2" DIA. STRUCTURAL (1/2) 6" DIA. CEDAR LODGE POLES; RE: 7/A4.0
 - 6" DIA. (1/2) CEDAR POLE, CHAMFER ENDS AT 45 DEGREES, RE: 7/A4.0
 - EQUIPMENT; RE: EQ1.0
 - NOT USED
 - NOT USED
 - SNEEZE GUARD; RE: 13/A4.0
 - PENDANT LIGHTING; RE: ELECTRICAL
 - RESTROOM SIGNAGE; RE: 9/A1.5
 - T.V. PROVIDED BY OWNER, INSTALLED BY G.C. ADD ELECTRICAL OUTLET AND DATA AT 108" AFF.; RE: ELECTRICAL
 - NOT USED
 - PERGOLA ABOVE; RE: 11/A4.1
 - NOT USED
 - CUSTOM BAHAMA BUCKS OPEN SIGN; RE: EQ1.0
 - CROSS HATCH INDICATES 5/8" BLOCKING AT BOTTLE FLAVOR RACKS AS REQUIRED.
 - HORIZONTAL GFCI OUTLETS, RE: ELECTRICAL

FINISH SCHEDULE

| FLOOR | FINISH |
|----------------|-------------------------|
| F-1 | PORCELAIN TILE |
| F-2 | EPOXY |
| BASE | |
| B-1 | PORCELAIN TILE |
| B-2 | EPOXY |
| INTERIOR PAINT | |
| PT-1 | CORAL |
| PT-2 | WHITE |
| PT-4 | BLACK |
| WALLS | |
| WC-1 | ACROVYN WAINSCOT |
| WC-4 | FRP |
| CEILING | |
| CT-1 | 2x4' VINYL FACED LAY-IN |
| MISC. INTERIOR | |
| PL-1 | PLASTIC LAMINATE |
| ST-1 | CLEAR COAT - GLOSS |



12/11/2017

ABACOIA TOWN CENTER
1209 MAIN STREET
UNIT 116
JUPITER, FLORIDA

REVISIONS:

| | |
|--|--|
| | |
| | |
| | |
| | |
| | |

PROJECT NUMBER: 17-598
DATE: 10-24-2017

INTERIOR ELEVATIONS

A3.0

Order Plans @

WWW.LDLINE.COM