

GMA
 architecture • planning • interior design
 C.M. ARCHITECTURE, P.A.
 A PROFESSIONAL ARCHITECTURAL CORPORATION
 600 WASHINGTON AVENUE, SUITE 205
 MINNEAPOLIS, MN 55415
 PHONE: (612) 547-3140
 FAX: (612) 547-3140
 CONTACT: KELL GIVEN
 kgiven@cmarch.com

CONSULTANTS:
 Edifica case
 engineering
 11111 Hennepin Avenue
 Minneapolis, MN 55424
 Edifica Case
 765 University Ave. #100
 St. Paul, MN 55108
 Edifica Case
 1012 Hennepin Ave. #100
 Minneapolis, MN 55403
 Edifica Case
 1012 Hennepin Ave. #100
 Minneapolis, MN 55403

SEAL:

 DANIEL J. CONRADO
 License No. 373523
 State of Minnesota

DARREL R. CASE
 SIGNATURE _____
 DATE ISSUED _____
 REG. NO. **6140**

TORRID
 ACADIANA MALL
 5725 JOHNSTON STREET
 LAFAYETTE, LA
 70503
 SPACE #B-115
 NEW MALL A

SHEET TITLE:
PANEL SCHEDULES AND RISER DIAGRAM

REVISIONS:
 NO. DATE BY:

PROJECT NO: 17127.044
 DRAWN BY: J VH

E3

COPYRIGHT C.M. ARCHITECTURE, P.A. 2017

PRIOR TO BID TENANT IS REQUIRED TO VERIFY THAT THE LANDLORDS EXISTING AVAILABLE ELECTRICAL SERVICE MEETS THE TENANTS TOTAL CONNECTED LOAD.

TGC TO SURVEY ALL EXISTING ELECTRICAL EQUIPMENT AND VERIFY THAT THEY ARE IN GOOD WORKING CONDITION, MEETS ALL CODES, AND MATCHES THE CAPACITIES AND CHARACTERISTICS OF THE EQUIPMENT INDICATED ON THESE DRAWINGS AND SPECIFICATIONS.
 VERIFY ANY ADDITIONAL WORK TO BE COMPLETED, ANY AND ALL UPGRADES TO EXISTING EQUIPMENT SHALL BE BY TGC AT TENANTS EXPENSE.

ANY UNUSED ELECTRICAL EQUIPMENT, FEEDERS, CONDUIT, PANELS, ETC. WITHIN OR SERVING THE PREMISES MUST BE COMPLETELY REMOVED TO POINT OF ORIGIN. DO NOT ABANDON IN PLACE. COORDINATE ALL WORK WITH MALL OPERATIONS.

PANEL BOARD A (EXISTING)		SURFACE MOUNTED			A.I.C. SERIES RATED
277/480 VOLTS		3 PHASE		4 WIRE	
225 AMP MCB		225 AMP BUS		FED FROM UTILITY	
LOAD SERVED	AP	BP	CP	LOAD SERVED	REQ. CIR. BREAK
1	SPACE			MAIN BREAKER	3
3	SPACE				4
5	SPACE				8
7	RTU-1			SPACE	9
9				SPACE	10
11				SPACE	12
13	SPACE				14
15	SPACE				16
17	SPACE				18
19	SPACE				20
21	SPACE				22
23	SPACE				24
25	SPACE				28
27	SPACE				28
29	SPACE			75 KVA XFMR	3
		14714	12844	12000	

LOAD DESCRIPTION	DEMAND FACTOR	VOLTS	AMPS	DEMAND
RECEPTACLES	N.E.C.	480		2160
RECEPTACLES	N.E.C.	480		2160
RECEPTACLES	N.E.C.	208		2160
MISC. EQUIPMENT	1.00	208		2080
KITCHEN EQUIPMENT	1.00	208		2080
TRUCK EQUIPMENT	1.00	208		2080
WATER HEATER	1.00	208		2080
TOTAL				8640
PANELBOARD LOAD =		4320 V.A.		
FULL LOAD AMPS =		55.8 A.		

*=PANEL SCHEDULES ARE SHOWN FOR SCHEMATIC PURPOSES ONLY. EC TO FIELD VERIFY ACTUAL CIRCUITING, AND ENSURE PHASES OF THE PANEL ARE BALANCED WITHIN 10%.

PANEL BOARD B (EXISTING)		SURFACE MOUNTED			A.I.C. SERIES RATED
120/208 VOLTS		3 PHASE		3 WIRE	
225 AMP MCB		225 AMP BUS		FED FROM PANEL BOARD 'A'	
LOAD SERVED	AP	BP	CP	LOAD SERVED	REQ. CIR. BREAK
1	SECURITY SYSTEM			LIGHTS-STOREFRONT	1
3	RECEPTACLE-POS			LIGHTS-FLOOR DISPLAY	1
5	RECEPTACLE-POS			SPARE	1
7	RECEPTACLE-POS			LIGHTS-DISPLAY	1
9	RECEPTACLE-POS			LIGHTS-DISPLAY	1
11	RECEPTACLE-POS			SPARE	1
13	RECEPTACLE-POS			CHANDSELER	1
15	RECEPTACLE-POS			LIGHTS-FITTING ROOM	1
17	RECEPTACLE-POS			LIGHTS-BOH	1
19	RECEPTACLE-POS			LIGHTS-NL-BOH	1
21	RECEPTACLE-POS			SPARE	1
23	RECEPTACLE-POS			RECEPTACLE-SALES	1
25	RECEPTACLE-POS			RECEPTACLE-POS	1
27	MIRROR RECEPTACLES			BUZZER	1
29	RECEPTACLE-POS			SPARE	1
31	RECEPTACLE-POS			RECEPTACLE-POS	1
33	RECEPTACLE-POS			RECEPTACLE-POS	1
35	RECEPTACLE-POS			RECEPTACLE-POS	1
37	RECEPTACLE-POS			RECEPTACLE-POS	1
39	RECEPTACLE-POS			RECEPTACLE-POS	1
41	RECEPTACLE-POS			RECEPTACLE-POS	1
		4714	4244	4200	

LOAD DESCRIPTION	DEMAND FACTOR	VOLTS	AMPS	DEMAND
RECEPTACLES	N.E.C.	208		2160
RECEPTACLES	N.E.C.	208		2160
RECEPTACLES	N.E.C.	480		2160
MISC. EQUIPMENT	1.00	208		2080
KITCHEN EQUIPMENT	1.00	208		2080
TRUCK EQUIPMENT	1.00	208		2080
WATER HEATER	1.00	208		2080
TOTAL				8640
PANELBOARD LOAD =		4320 V.A.		
FULL LOAD AMPS =		55.8 A.		

*=PANEL SCHEDULES ARE SHOWN FOR SCHEMATIC PURPOSES ONLY. EC TO FIELD VERIFY ACTUAL CIRCUITING, AND ENSURE PHASES OF THE PANEL ARE BALANCED WITHIN 10%.

LENGTH	CIRCUIT WIRE SIZE	HOME RUN WIRE SIZE
1FT TO 50FT	NO.12 AWG	NO.12 AWG
51FT TO 75FT	NO.12 AWG	NO.12 AWG
76FT TO 120FT	NO.10 AWG	NO.8 AWG
121FT TO 190FT	NO.10 AWG	NO.8 AWG
191FT TO 300FT	NO.10 AWG	NO.4 AWG

RISER DIAGRAM NOTES

-FINAL CONNECTION OF TENANT'S ELECTRICAL SERVICE SHALL BE PROVIDED BY TENANT'S ELECTRICAL CONTRACTOR. PROVIDE ALL METERING AND CIR AS REQUIRED BY THE LANDLORD AND UTILITY COMPANY. ELECTRICAL CONTRACTOR SHALL FIELD VERIFY EXISTING WOOD IN LANDLORD'S ELECTRICAL GEAR AND PROVIDE A HOW MOOP AS REQUIRED. ANY NEW EQUIPMENT SHALL MATCH THE EXISTING ELECTRICAL GEAR MANUFACTURER AND AG RATING.

-I.C. TO VERIFY EXISTING DISMANTLED ELECTRICAL FEEDERS FROM U.I. DISTRIBUTION AND SERVICE TO TENANT SPACE PRIOR TO BID.

-T.G.C. TO VERIFY METERING REQUIREMENTS WITH LANDLORD AND LOCAL UTILITY PRIOR TO BID.

-I.C. SHALL VERIFY EXISTING ELECTRICAL EQUIPMENT RATING, VOLTAGES, WIRE SIZES, AND PHASES PRIOR TO BID. NOTIFY ARCHITECT / ENGINEER OF ANY DEFICIENCIES THAT NEED TO BE MADE TO THE DESIGN DUE TO CONDITIONS IN THE FIELD.

RISER NOTE:

THE ELECTRICAL CONTRACTOR SHALL VISIT THE PROJECT SITE PRIOR TO BID TO VERIFY ALL EXISTING ELECTRICAL CONDITIONS AND CONSTRUCTION OF THE BUILDING. THE CONTRACTOR SHALL BE RESPONSIBLE FOR OBTAINING ALL NECESSARY PERMITS AND APPROVALS FROM THE LOCAL BUILDING AUTHORITY.

GENERAL NOTES

CONTRACTOR SHALL VISIT THE SITE AND FAMILIARIZE HIMSELF WITH THE EXISTING CONDITIONS UNDER WHICH HE IS TO PERFORM HIS WORK. NO ALLOWANCE WILL BE MADE FOR FAILURE TO COMPLY.

ALL ELECTRICAL WORK SHALL BE DONE IN ACCORDANCE WITH THE LATEST ADOPTED NATIONAL ELECTRICAL CODE AND ALL APPLICABLE FEDERAL, STATE, AND LOCAL CODES AND ORDINANCES.

VERIFY EXACT LOCATION, MOUNTING HEIGHT AND ELECTRICAL REQUIREMENTS OF ALL EQUIPMENT PROVIDED BY OTHERS (INCLUDING HVAC EQUIPMENT) PRIOR TO ROUGH-IN AND PROVIDE ALL REQUIRED FUSIBLE SWITCHES, TRANSFORMERS, STARTERS NECESSARY FOR PROPER OPERATION OF EQUIPMENT.

DUPLEX RECEPTACLES MOUNTED WITHIN 6 FT. OF SINK SHALL BE GFCI TYPE.

ALL WIRING SHALL BE COPPER, THHN/THWN OR XHHW INSULATED IN CONDUIT. MINIMUM CONDUIT SIZE TO BE 1/2". PROVIDE INSULATED COPPER GROUND WIRE ON ALL CIRCUITS.

REFER TO ARCHITECTURAL DRAWINGS FOR EXACT LOCATION OF LIGHTING FIXTURES. VERIFY CEILING TYPES AND PROVIDE NECESSARY MOUNTING HARDWARE TO ACCOMMODATE LIGHT FIXTURES USED. PROVIDE SLOPE CEILING ADAPTERS WHERE REQUIRED.

ADDITIONAL EXIT SIGNS AND EMERGENCY LIGHTING MAY BE REQUIRED. ADDITIONAL FIXTURES SHALL BE LOCATED AS DIRECTED BY THE LOCAL BUILDING AUTHORITY.

ELECTRICAL LEGEND

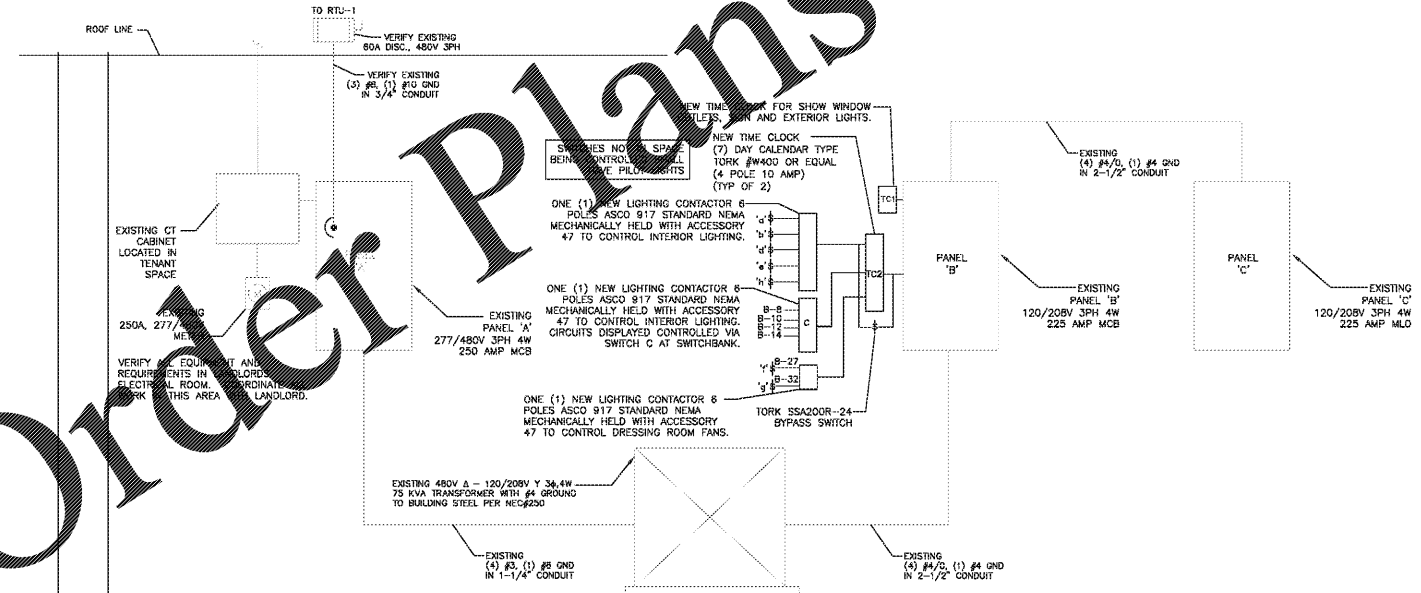
SYMBOL	DESCRIPTION	MOUNTING HGT. TO CENTERLINE UNLESS OTHERWISE NOTED
⊕	JUNCTION BOX	AS REQUIRED
⊕	DUPLEX RECEPTACLE, 3 WIRE GRD. TYPE	18"
⊕	CLOCK RECEPTACLE, 3 WIRE GRD. TYPE	18"
⊕ WP	DUPLEX RECEPTACLE, WEATHERPROOF	18"
⊕	DUPLEX RECEPTACLE, GROUND FAULT PROTECTED	18"
⊕	DUPLEX RECEPTACLE, ISOLATED GROUND	18"
⊕	QUADRUPLEX RECEPTACLE	18"
⊕	TOGGLE SWITCH, SINGLE POLE	48"
⊕	ELECTRIC PANEL	6'-0" TO TOP
⊕	TELEPHONE OUTLET - 4" SQ. W/PLASTER RING	18"
⊕	DATA OUTLET - 4" SQ. W/PLASTER RING	18"
⊕	FIRE ALARM AUDIO/VISUAL SIGNAL DEVICE	96"
⊕	DELIVERY BUZZER	AS REQUIRED
⊕	DELIVERY BUZZER PUSHBUTTON	54"
⊕	CEILING SPEAKER	CEILING MTD.
⊕	FITTING ROOM / BATHROOM FAN	WALL MTD.
⊕	ABOVE CEILING MOUNTED WATER HEATER. SEE PLUMB SHEET(S)	AS REQUIRED
⊕	DUCT MTD. SYSTEM SMOKE DETECTOR W/ REMOTE INDICATORS	AS REQUIRED
T.G.C.	TENANT GENERAL CONTRACTOR	

A.D.A. NOTES

LIGHT SWITCHES, ELECTRICAL OUTLETS, THERMOSTATS AND OTHER ENVIRONMENTAL CONTROLS SHALL HAVE OPERABLE PARTS OF THE CONTROLS LOCATED NO HIGHER THAN 48" AND NO LOWER THAN 15" ABOVE THE FLOOR. IF THE REACH IS OVER AN OBSTRUCTION BETWEEN 20" AND 25" IN DEPTH, THE MAXIMUM HEIGHT IS REDUCED TO 44" FOR FORWARD APPROACH OR 46" FOR SIDE APPROACH, PROVIDED THE OBSTRUCTION IS NO MORE THAN 24" IN DEPTH. OBSTRUCTIONS SHALL NOT EXTEND MORE THAN 25" FROM THE WALL BENEATH A CONTROL.

KEYED NOTES

① E.C. SHALL COORDINATE WITH LOCAL UTILITY TO VERIFY NECESSARY AIC RATING ON ANY/ALL EQUIPMENT PRIOR TO BID AND ROUGH-IN. IF EXISTING EQUIPMENT IS TO BE REUSED, IT SHALL VERIFY AIC WITH LOCAL UTILITY THAT EXISTING EQUIPMENT IS RATED PROPERLY.



1 SINGLE LINE DIAGRAM

Order Plans @