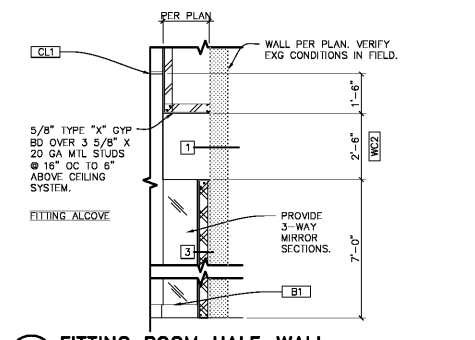
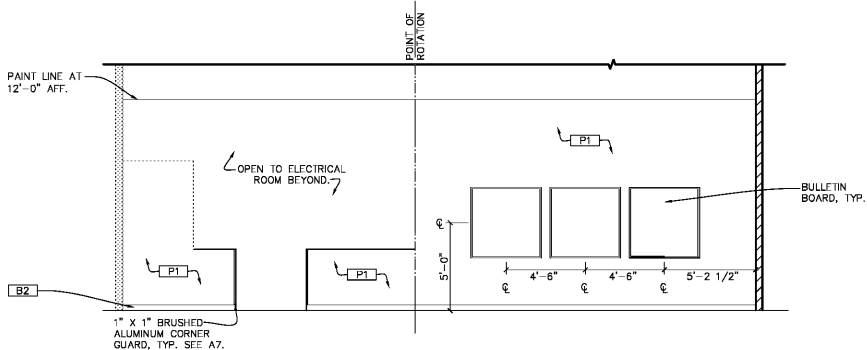


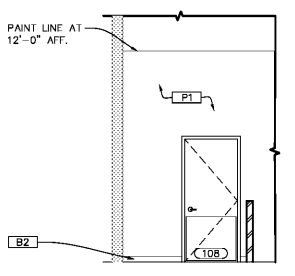
NOTES:
1. SEE A4 FOR MORE INFORMATION ON FIXTURES.



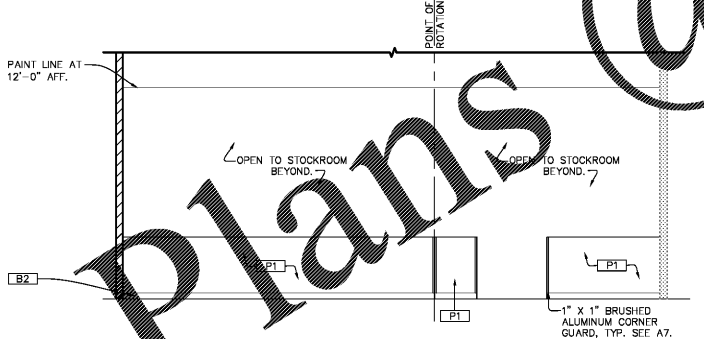
1 FITTING ROOM HALF-WALL
SCALE 3/8" = 1'-0"



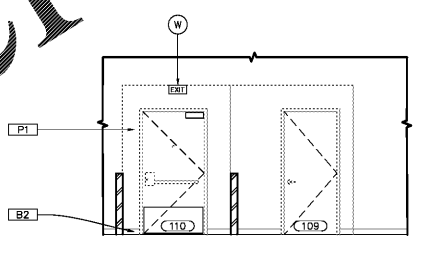
2 HALLWAY ELEVATION
SCALE 1/4" = 1'-0"



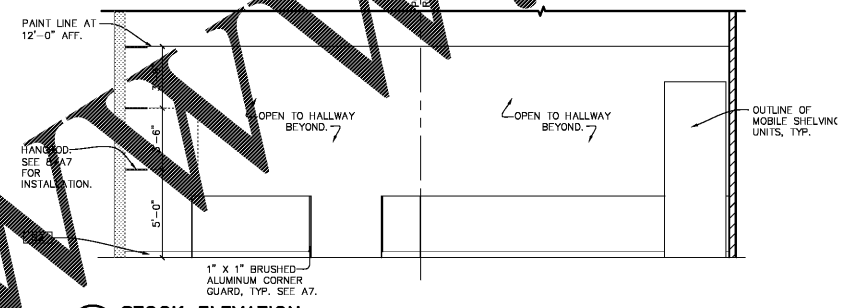
3 HALLWAY ELEVATION
SCALE 1/4" = 1'-0"



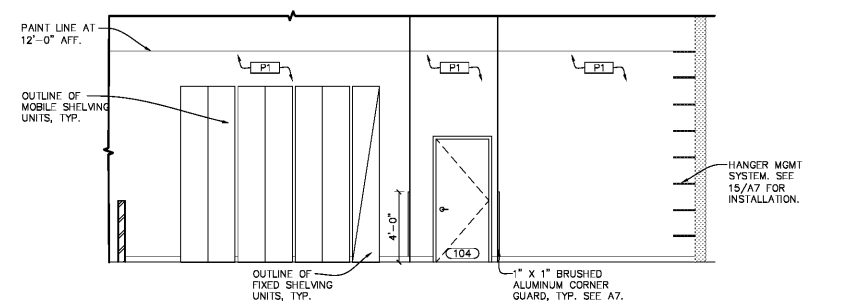
4 HALLWAY ELEVATION
SCALE 1/4" = 1'-0"



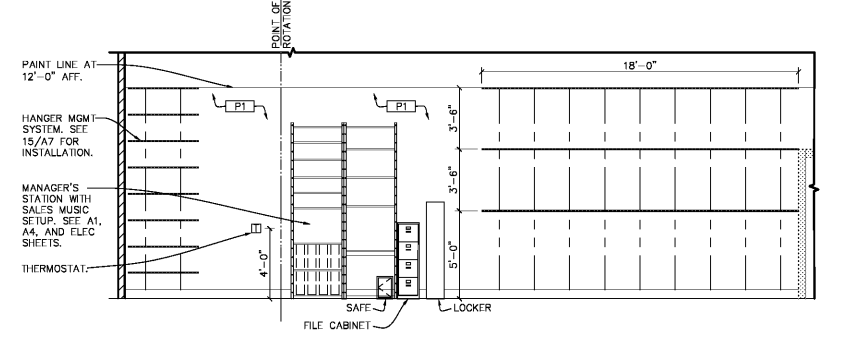
5 HALLWAY ELEVATION
SCALE 1/4" = 1'-0"



6 STOCK ELEVATION
SCALE 1/4" = 1'-0"



7 STOCK ELEVATION
SCALE 1/4" = 1'-0"



8 STOCK ELEVATION
SCALE 1/4" = 1'-0"

OMA
architecture - planning - interior design
C.M. ARCHITECTURE, P.A.
A PROFESSIONAL ARCHITECTURE CORPORATION
800 WASHINGTON AVENUE, SUITE 208
MINNEAPOLIS, MN 55401-4848
PHONE: (612) 547-1100
FAX: (612) 547-1100
CONTACT: KELL GIVEN
torrid@oma.com

CONSULTANTS:
MEP ENGINEER:
AEDIFICA CASE
796 MERUS COURT
ST. LOUIS, MO 63026
PH: (636) 349-1600

SEAL:

PATRICK G. BLEES, ARCHITECT
SIGNATURE _____
DATE ISSUED 11.2.17
REG. NO. 6140

TORRID
ACADIANA MALL
5725 JOHNSTON STREET
LAFAYETTE, LA
70503
SPACE #B-115
NEW MALL A

SHEET TITLE:
INTERIOR ELEVATIONS -
STOCKROOM AND
HALLWAY

REVISIONS:

NO.	DATE:	BY:

PROJECT NO: 171214.044
DRAWN BY: NV

A5b