

CONSULTANTS:
 MEP ENGINEER:
 AEDIFICA CASE
 786 MERUS COURT
 ST. LOUIS, MO 63026
 PH: (636) 349-1600

SEAL:
 PATRICK G. BLEES, ARCHITECT
 SIGNATURE _____
 DATE ISSUED: 11.2.17
 REG. NO. 6140

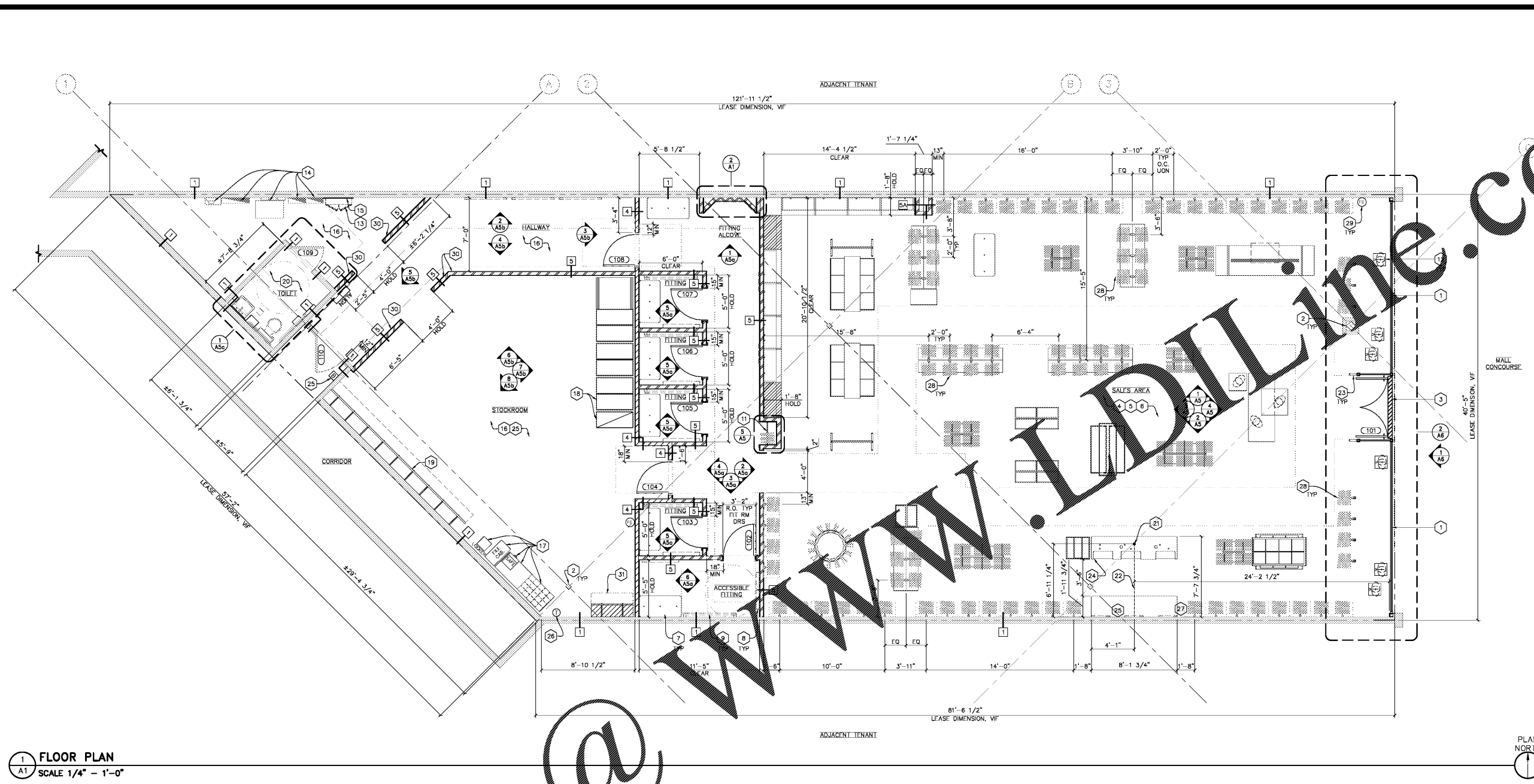
TORRID
 ACADIANA MALL
 5725 JOHNSTON STREET
 LAFAYETTE, LA
 70503
 SPACE #B-115
 NEW MALL A

SHEET TITLE:
 FLOOR PLAN, PARTITION
 SCHEDULE AND NOTES

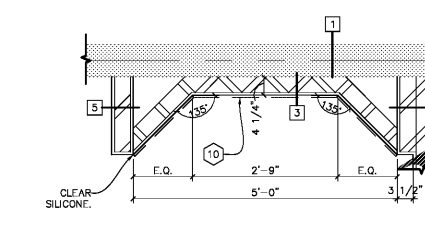
REVISIONS:
 NO. DATE BY:

PROJECT NO: 17127.044
 DRAWN BY: ABS

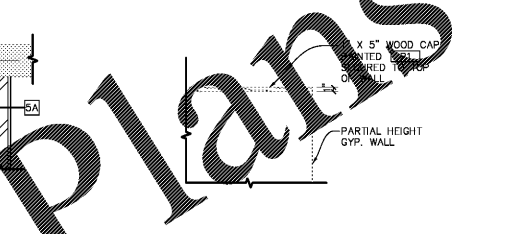
A1



1 FLOOR PLAN
 SCALE 1/4" = 1'-0"



2 3-WAY MIRROR
 SCALE 3/4" = 1'-0"



3 HARDWOOD CAP
 SCALE 3/4" = 1'-0"

WALL HEIGHT	STUD SPEC	STUD SPACING
0'-0" TO 10'-6"	250S125-33 (20 GA)	1'-0"
0'-0" TO 10'-10"	362S125-18 (25 GA)	1'-4"
10'-10" TO 12'-5"	362S125-33 (20 GA)	2'-0"
12'-5" TO 13'-6"	362S125-33 (20 GA)	1'-4"
13'-6" TO 15'-6"	362S125-33 (20 GA)	1'-0"
15'-6" TO 16'-11"	362S125-33 (20 GA)	1'-0"
16'-11" TO 19'-8"	362S125-54 (16 GA)	1'-0"
19'-8" TO 26'-7"	800S162-54 (16 GA)	1'-4"

SYMBOL	PLAN	DESCRIPTION	REMARKS
1	[Symbol]	EXG DEMISING WALL/EXG PARTITION WALL TO REMAIN. REPAIR GYP BD AS REQ. PREPARE FOR NEW FINISHES.	A
2	[Symbol]	2 1/2" METAL STUDS WITH 5/8" TYPE "X" GYP BD ON SALES SIDE ONLY TO 6" ABOVE CEILING. SEE STUD SPACING SCHEDULE FOR SPACING REQ.	NOT USED
3	[Symbol]	3 5/8" METAL STUDS WITH 5/8" TYPE "X" GYP BD ON SALES SIDE ONLY TO 6" ABOVE CEILING. BRACE TO DEMISING WALL AS INDICATED ON 1/ASB. SEE STUD SPACING SCHEDULE FOR SPACING REQ.	
4	[Symbol]	3 5/8" METAL STUDS WITH 5/8" TYPE "X" GYP BD ON BOTH SIDES TO DECK ABOVE. SEE STUD SPACING SCHEDULE FOR SPACING REQ.	
4A	[Symbol]	3 5/8" METAL STUDS WITH 5/8" TYPE "X" GYP BD ON SALES SIDE ONLY TO 6" ABOVE CEILING. SEE STUD SPACING SCHEDULE FOR SPACING REQ.	NOT USED
B	[Symbol]	3 5/8" METAL STUDS WITH 5/8" TYPE "X" GYP BD ON OUTSIDE ONLY TO CEILING ABOVE AT GYP BD LOCATIONS AND TO 6" ABOVE CEILING AT ACT LOCATIONS UNLESS OTHERWISE NOTED. SEE STUD SPACING SCHEDULE FOR SPACING REQ.	B
4B	[Symbol]	3 5/8" METAL STUDS WITH 5/8" TYPE "X" GYP BD ON BOTH SIDES TO CEILING ABOVE AT GYP BD LOCATIONS AND TO 6" ABOVE CEILING AT ACT LOCATIONS. SEE STUD SPACING SCHEDULE FOR SPACING REQ.	
6	[Symbol]	6" METAL STUDS WITH 5/8" TYPE "X" GYP BD ON BOTH SIDES TO CEILING ABOVE. FRP IS TO BE INSTALLED OVER GYP BD SIDE UP TO 4'-0" AFF ON TOILET SIDE. SEE STUD SPACING SCHEDULE FOR SPACING REQ.	NOT USED

NOTES:
 1. CONTROL JOINTS @ 30'-0" OC OR AS REQ AT GYP BD ASSEMBLIES.
 2. ALL GYP BD TO BE TAPED, SPACKLED THREE (3) COATS, AND PRIMED FOR A LEVEL 4 FINISH.
 3. SEE SHEET A7 FOR WALL PARTITION DETAILS.

REMARKS:
 A. ENSURE 1-HR PROTECTION AT DEMISING WALLS.
 B. INSTALL DIAGONAL BRACING TO STRUCTURE AS REQUIRED FOR SUPPORT FOR PARTIAL HEIGHT PARTITION. SEE A7 FOR CONNECTION DETAIL.

NOTE:
 GO TO VERIFY FINAL FIXTURE LAYOUT AS WELL AS FINAL STANDARD LAYOUT WITH TORRID'S PM PRIOR TO INSTALLATION.

SYMBOL	PLAN	DESCRIPTION	REMARKS
1	[Symbol]	STOREFRONT GLAZING SYSTEM AND ENTRY DOORS. SEE SHEET A6. COORDINATE WITH LANDLORD.	
2	[Symbol]	EXG STRUCTURAL COLUMNS TO REMAIN THROUGHOUT.	
3	[Symbol]	TORRID LOGO SIGNAGE AT EXTERIOR FACADE FOR REFERENCE ONLY. SIGNAGE UNDER SEPARATE PERMIT. COORDINATE WITH LANDLORD AND SIGN VENDOR.	
4	[Symbol]	COORDINATE THE INSTALLATION OF ALL CABINETS, COUNTERS, FIXTURES, ETC. SEE SHEET A4.	
5	[Symbol]	SALES AREA WALLS TO BE PAINTED [P1] FROM [B1] TO PERIMETER TRIM ABOVE AND [P2] FROM TOP OF PERIMETER TRIM TO CEILING ABOVE UON. CEILING PAINTED [P2] UON. SEE A7 FOR TYP WALL STANDARD INSTALLATION.	
6	[Symbol]	EXG FLOOR SLAB TO REMAIN THROUGHOUT. PREPARE FOR INSTALLATION OF NEW FINISHES. SEE SHEET A3. FLOORING TO BE FLUSH WITH ADJACENT FLOOR FINISH. PROVIDE FLOOR LEVELING AS NECESSARY.	
7	[Symbol]	BENCH AT FITTING ROOM PROVIDED BY TENANT. SEE SHEET A5b FOR ELEVATIONS AND ATTACHMENT DETAIL.	
8	[Symbol]	BACKLIT MIRRORS IN FITTING ROOM PROVIDED BY TENANT. ALL OTHER MIRRORS PROVIDED BY GC. INCLUDING NON-LIT MIRROR ACCESS FROM ADA BENCH. SEE ELEVATIONS FOR SIZE AND TRIM IF APPLICABLE. INSTALL ABOVE [B1] AND SEAL EDGES WITH CLEAR SILICONE. SEE SHEET A5b.	
9	[Symbol]	METAL MESH WALL FIXTURE. INSTALL AS SHOWN ON SHEET A5b.	
10	[Symbol]	PROVIDE 3-WAY MIRROR AND FINISHES AS INDICATED ON SHEET A5b.	
11	[Symbol]	"GO-BACK" BAR. PROVIDE BLOCKING IN WALL ON EITHER SIDE. SEE SHEET A5.	
12	[Symbol]	FREE-STANDING BODYFORMS TO BE HANDLED BY TENANT ONLY.	
13	[Symbol]	LOCATION OF WALL MOUNTED SERVER BOX ABOVE. SEE SHEET A4 AND A5b.	
14	[Symbol]	LOCATION OF EXG ELECTRICAL PANELS, EQUIPMENT, AND TRANSFORMER. SEE ELECTRICAL SHEETS.	
15	[Symbol]	PROVIDE 3/4" PLYWOOD AT LOCATION OF ITB EQUIP.	
16	[Symbol]	STOCKROOM AND HALLWAY WALLS TO BE PAINTED [P1] FROM [B2] TO 12'-0" AFF.	
17	[Symbol]	LOCATION OF DESK, SHELVING, MARKETING TUBE STORAGE UNIT, LOCKER, FILE CABINET AND SAFE. SEE SHEET A4 FOR RESPONSIBILITY AND NOTES TO SECURE FIXTURES.	
18	[Symbol]	LOCATION OF MOBILE/FIXED SHELVING SYSTEM. SEE SHEET A5b FOR ELEVATIONS. COORDINATE WITH VENDOR FOR INSTALLATION INFORMATION AND DETAILS. MOBILE SHELVING TO BE FURNISHED BY VENDOR. SEE APPROVED VENDOR DRAWINGS ON TORRID FTP SITE.	
19	[Symbol]	HANGING ROD. SEE SHEETS A5b AND A7.	
20	[Symbol]	EXG TOILET ROOM TO REMAIN. PROVIDE ACCESSORIES PER SHEET A5c AS REQ. NOTE THAT TENANT SPACE IS LESS THAN 300' TO THE NEAREST ADA COMPLIANT WALL RESTROOM. WALL RESTROOM WILL SERVE AS THE ACCESSIBLE TOILET FACILITY FOR PUBLIC AND EMPLOYEES.	
21	[Symbol]	PROVIDE CONDUIT AND PULL WIRE FOR ELECTRICAL/VOICE/DATA AT CASHWRAP. COORDINATE CONDUIT STUB-INS IN CASHWRAP WITH VENDOR'S SHOP DRAWINGS TO ENSURE ACCURATE AND CLEAN INSTALLATION IS ACCOMPLISHED. CONDUIT TO COME FROM INSIDE OF FLOOR TO CASHWRAP. STUB-INS ARE TO BE CLEAN HOLES USING A DRILL BIT ONE SIZE LARGER THAN THE CONDUIT.	
22	[Symbol]	SAW CUT EXISTING SLAB (VERIFY WITH LANDLORD ON-SITE REPRESENTATIVE). PATCH/INFILL AS REQUIRED TO MATCH EXISTING CONDITIONS AFTER ELECTRICAL HAS BEEN INSTALLED FOR CASHWRAP.	
23	[Symbol]	SENSORMATIC "DIGITAL DOOR-MAX" SECURITY SYSTEM. COORDINATE THE INSTALLATION OF ALL SECURITY COMPONENTS WITH VENDOR AND LANDLORD. PAINT ANY VISIBLE EAS CONDUITS MOUNTED TO STOREFRONT SYSTEM TO MATCH ADJACENT MULLION. SEE SHEET A5 AND ELECTRICAL SHEETS.	
24	[Symbol]	LOCATION OF VOLUME CONTROL FOR MUSIC SYSTEM IN CASHWRAP. SEE SHEET A5 FOR ELEVATIONS. COORDINATE WITH VENDOR.	
25	[Symbol]	LOW VOLTAGE BUZZER SYSTEM. LOCATE (1) BELL IN STOCK ROOM AND (1) BELL IN CEILING ABOVE CASHWRAP. SEE A2 AND ELECTRICAL SHEETS.	
26	[Symbol]	LOCATION OF THERMOSTAT AT 48" AFF. SEE SHEET A5b AND M1.	
27	[Symbol]	LOCATION OF CEILING MOUNTED REMOTE TEMPERATURE. SEE SHEET A2 AND M1.	
28	[Symbol]	FREE-STANDING POST INSTALLATION. SEE SHEETS A4 AND A7 FOR ADDITIONAL INFORMATION.	
29	[Symbol]	FIRE EXTINGUISHER. LOCATE AS REQ BY FIRE MARSHALL.	
30	[Symbol]	TOP OF WALL AT 42" AFF.	
31	[Symbol]	LOCATION OF HANGER MANAGEMENT SYSTEM. SEE A4 FOR RESPONSIBILITY AND NOTES TO SECURE FIXTURE.	

Order Plans @
 C:\TORRID\17127.044\Drawings\Work in Progress\17127.044_A1_FR.dwg
 11/07/2017 10:06:10 AM